

**USER'S  
MANUAL  
ICEPEAK 7  
PRO-MODEL**



## WELCOME

Born to race

### WELCOME

We wish to welcome you to our team and thank you for the confidence that you have placed in a NIVIUK Glider.

We would like to share with you the commitment, the passion and emotions of the Niviuk design team, which have resulted in the creation of the new ICEPEAK 7 PRO-MODEL. Niviuk are very proud of this new glider, a glider carefully designed to bring you maximum pleasure whilst allowing you learn and progress.

The Icepeak 7 PRO-MODEL is the ultimate expression of Niviuk technology. A high performance competition glider with an incredible internal structure and aerodynamic shaped.

We are confident that you will enjoy flying this wing and that you will soon understand the meaning of our slogan:

“The importance of small details”

This is the user's manual that we recommend you to read in detail.

### **The NIVIUK Gliders Team.**

---

NIVIUK GLIDERS & AIR GAMES SL C/ DEL TER 6, NAVE D 17165 LA CELLERA DE TER - GIRONA - SPAIN

TEL. +34 972 42 28 78 FAX +34 972 42 00 86

info@niviuk.com www.niviuk.com

---

## USER'S MANUAL

### NIVIUK Gliders ICEPEAK 7 PRO-MODEL

This manual offers all the necessary information that will familiarize you with the main characteristics of your new paraglider. Although this manual informs you about your glider, it does not offer the instruction requirements necessary for you to be able to pilot this type of wing. Flying instruction can only be set by the competent organism in your country of flying zone.

Nevertheless we remind you that it is important that you carefully read all the contents of the manual for your new ICEPEAK 7 PRO-MODEL.

Severe injuries to the pilot and passenger, including death, can be the consequence of the misuse of this equipment. Neither the manufacturer nor the dealers or sellers of this product are responsible of the damage derived from using this glider in an inappropriate way. Only the pilot is entirely accountable for any damage derived there from.

## SUMMARY

WELCOME	2	4.5 KNOTS IN FLIGHT	10
USER'S MANUAL	2	5. LOSING HEIGHT	11
1. CHARACTERISTICS	4	5.1 EARS	11
1.1 WHO IS IT DESIGNED FOR?	4	5.2 B3 TECHNIQUE	11
1.2 CERTIFICATION	4	5.3 B-LINE STALL	12
1.3 IN-FLIGHT BEHAVIOUR	4	5.4 SPIRAL DIVE	12
1.4 ASSEMBLY, MATERIALS	5	5.5 SLOW DESCENT TECHNIQUE	12
1.5 ELEMENTS, COMPONENTS	5	6. SPECIAL METHODS	12
2. UNPACKING AND ASSEMBLY	6	6.1 TOWING	13
2.1 CHOOSE THE RIGHT PLACE	6	6.2 ACROBATIC FLIGHT	13
2.2 PROCEDURE	6	7. FOLDING INSTRUCTIONS	13
2.3 ASSEMBLY OF THE HARNESS	6	8. CARE AND MAINTENANCE	13
2.4 TYPE OF HARNESS	6	8.1 MAINTENANCE	13
2.5 ASSEMBLY OF THE ACCELERATOR	7	8.2 STORAGE	13
2.6 INSPECTION AND WING INFLATION		8.3 CHECKS AND CONTROLS	14
ON THE GROUND	7	8.4 REPAIRS	14
2.7 ADJUSTING THE BRAKES	7	9. SAFETY AND RESPONSIBILITY	14
3. THE FIRST FLIGHT	7	10. GUARANTEE	14
3.1 CHOOSE THE RIGHT PLACE	7	11. TECHNICAL DATA	15
3.2 PREPARATION	7	11.1 MATERIALS DESCRIPTION	15
3.3 FLIGHT PLAN	7	11.2 MATERIALS DESCRIPTION	16
3.4 PRE-FLIGHT CHECK LIST	8	11.3 RISER ARRANGEMENT ICEPEAK 7	
3.5 WING INFLATION, CONTROL, AND TAKE-OFF	8	PRO-MODEL	17
3.6 LANDING	8	11.4 LINE PLAN ICEPEAK 7 PRO-MODEL	18
4. IN FLIGHT	8	11.5 LENGHTS ICEPEAK 7	
4.1 FLYING IN TURBULENCE	8	PRO-MODEL 23	19
4.2 POSSIBLE CONFIGURATIONS	8	11.6 LENGHTS ICEPEAK	
4.3 USING THE ACCELERATOR	10	PRO-MODEL 7 24	19
4.4 FLYING WITHOUT BRAKE LINES	10	11.7 CERTIFICATION SPECIMEN TEST	20



## 1. CHARACTERISTICS

### 1.1 WHO IS IT DESIGNED FOR?

The ICEPEAK 7 PRO-MODEL has been designed for experienced pilots and those wishing to compete in high performance competitions. It has been conceived for competition; therefore, it has an extraordinary capacity to fly kilometre after kilometre with an intensive pace. Its strengths are its glide, its excellent rapid ascent in thermals and its speed when flying. Moreover, it provides to the pilot a perfect transmission of the air flow and an incomparable security sensation in its category.

Description of the skills and experience required for this glider:  
For those pilots used to recovery techniques, active piloting, to fly on turbulent conditions and capable of flying these kind of demanding gliders.

### 1.2 CERTIFICATION

The ICEPEAK 7 PRO-MODEL has successfully achieved the European EN/LTF certification. This test was carried out in the Swiss Air-Turquoise laboratories in Switzerland. All the commercially available sizes passed every required test with excellent results and the ICEPEAK 7 PRO-MODEL received EN D / LTF D certification for all sizes.

The ICEPEAK 7 PRO-MODEL passed the essential load test of 8g without experiencing any problems.

We recommend paying special attention on the flight test report made by the certification laboratory, and specially attention to the test pilot comments (Point 25 on the flight test report).

On the flight test report there is all necessary information to know how the new paraglider will react on each manoeuvre tested. It is important to take into account that each size can have a different

reaction on the same manoeuvre. Furthermore, the same size on maximum load or minimum load can experiment a different behaviour.

Description of flight characteristics on D class:

Paragliders with very demanding flying characteristics and potentially violent reactions to turbulence and pilot errors. Recommended for experienced and regularly flying pilots. The intervention of the pilot is needed to recover a normal flight state.

Check the certification results and figures on the last pages of this manual or at [www.niviuk.com](http://www.niviuk.com)

### 1.3 IN-FLIGHT BEHAVIOUR

Designing a new high-featured and accessible glider is the result of years of research and extensive testing flights under all conditions and in different places in order to provide an easy piloting wing.

Its new profile makes the most of the airflow to maximize the efficiency of the glider. More compact and clean leading edge. New materials in the internal part of the glider to provide the endurance needed in competition and lightness.

Excellent feeling on thermals, better climb rate and stall recovery. The outcome of putting all this technology together is a trusty and stable glider even at maximum speed. It is more demanding, but providing fantastic turning for a 2-liner glider and the same comfort that characterize all Icepeak models.

With an aspect ratio of 7.5, it is a 2 liner wing that provides clear and useful information to the pilot; it usually situates itself into the centre of the thermal or it follows the ascendant (good) air flow. While flying the ICEPEAK 7 PRO-MODEL the pilot feels that can reach his full potential. In thermals, you will realize that you are piloting a glider with a big

capacity to reach the nucleus. Regarding speed and L/D, ICEPEAK 7 PRO-MODEL is surprising; the pilot can feel the glider, through the accelerator pulley, and can anticipate its movements. Even at high speed the wing is stable. The accelerator pulley of ICEPEAK 7 PRO-MODEL works gradually and lets you enjoy real acceleration without losing L/D in the first part of the accelerator. The wing is homogeneous, fast and capable to fly as far as you dreamed possible. The second part of the accelerator is very accessible and pleasure to use. The glider keeps its excellent glide angle throughout a full days flying in all conditions.

If you already are a Niviuk pilot the improvements of this glider will surprise you. If this is the first time you pilot one of our gliders, just enjoy it!

#### 1.4 ASSEMBLY, MATERIALS

The ICEPEAK 7 PRO-MODEL has all the technological innovations as used on other Niviuk gliders. Furthermore it is full of small details destined to enhance the pilots' comfort and to improve the performance.

The new generation profile of the ICEPEAK 7 PRO-MODEL has been conceived to efficiently distribute the total load across the two rows of lines. The chosen materials and line dimensions have minimum air resistance while respecting the security and maximum load efficiency.

The fabrics used in the construction of the ICEPEAK 7 PRO-MODEL have been carefully selected for their lightweight, uv standards and resilient properties when used during normal conditions.

Not a single millimetre of error is possible in the manufacturing process from Olivier's computer to the cutting of the fabric. An automatic process controlled by a laser-cutting program cuts each of the sections that compose the different parts of the wing. This program not only cuts the pieces of fabric but it also paints the guideline marks that will aid the assembly; it also numbers the separate pieces of material. All this is

carried out before human handling of the pieces begins. So we eliminate possible and understandable errors that may occur during this delicate procedure.

The lines are semi-automatically manufactured and all the sewing is finished under the supervision of our specialists. The jigsaw puzzle of the assembly process is made easier using this method. We minimize the processes while making the quality control more efficient. All the different parts of the canopy are cut and assembled under the strict conditions induced by the automation of the whole process.

It is strongly recommended that all lines are thoroughly checked by the pilot prior to every flight and ultimately checked by a service centre or Niviuk dealer after the first 30 hours of flight. We should not forget that we are using materials with great performance but that they need a rigorous check before every flight.

All NIVIUK Gliders go through an extremely thorough and efficient final inspection.

Every single line of each glider is measured individually once the final assembly has concluded. Each wing is then individually inflated for the last visual revision.

Each glider is packaged following the maintenance and conservation instructions recommended for the advanced materials. NIVIUK Gliders are made of first class materials as demanded by the performance, durability, and homologation requirements of the present-day market.

Information about construction materials is given on the last pages of this manual.

#### 1.5 ELEMENTS, COMPONENTS

The ICEPEAK 7 PRO-MODEL is delivered to its owner together with a series of components that, although not fundamental, do take an

important part in the use, transport and storage of the paraglider:

-The new large capacity Kargo rucksack 220L, ideal for packing also one competition harness (such as the Drifter). Capacity and comfort all in one.

-The N-Kare bag which makes easy the glider folding process. Moreover, it protects the wing when packing and carrying. An adjustable strap for quick and easy compression to fold the wing as small as possible

-A small fabric repair including auto adhesive rips top (same colours of the wing) and replacement maillon blockers.

The user's manual with the answers all our questions about our new ICEPEAK 7 PRO-MODEL is available at [www.niviuk.com](http://www.niviuk.com)

## 2. UNPACKING AND ASSEMBLY

### 2.1 CHOOSE THE RIGHT PLACE

We recommend that you unpack and assemble your wing on a schooling slope or a flat clear area without too much wind and free of obstacles. These conditions will allow you to carry out all the steps required for you to check and inflate the ICEPEAK 7 PRO-MODEL.

We recommend that an instructor or a retailer supervises the entire procedure as only they are competent to resolve any doubt in a safe and professional way.

### 2.2 PROCEDURE

Take the paraglider out of the rucksack, open it and spread it open with the lines on top of the underside, position the wing as if you were to inflate it. Check the condition of the fabric and the lines, making sure

there are no abnormalities. Check the maillons, which attach the lines to the risers, are properly closed. Identify and if necessary disentangle the lines from A and B risers, the brake lines and the corresponding risers. Make sure that there are no ties or knots.

### 2.3 ASSEMBLY OF THE HARNES

Correctly place the risers on the harness karabiners. The risers and lines should not have any twists and they should be in the right order. Check that the harness buckles are correctly locked.

### 2.4 TYPE OF HARNES

The ICEPEAK 7 PRO-MODEL has been certified on EN D with a harness according to the following rules:

- 2. DV LuftGerPV §1, Nr. 7 c (LTF)
- European Standard EN1651
- European Standard EN12491

This certification allows it to be flown with most of the harnesses on the market, even the ones that use cocoon. We strongly recommend that you adjust the distance of the chest strap according the values used during certification. This varies according to the size of the chosen harness.

Small = 44 cm  
Medium = 45 cm  
Large = 46 cm

Incorrect adjustment can seriously affect the piloting of the glider. A distance, which is too wide between the karabiners, may provide more feedback but could affect the overall stability of the glider. A distance, which is too narrow between the karabiners, would provide less feedback but also increase any risk of developing a twist in during a large collapse. Any change made to these specifications may affect the wing's

performance and reactions. This would therefore effect the glider's configuration and would not conform to the homologation.

## 2.5 ASSEMBLY OF THE ACCELERATOR

The acceleration mechanism of the ICEPEAK 7 PRO-MODEL works when you push with your feet on the accelerator bar, this is supplied with the equipment. On delivery the accelerator bar has not yet been installed and it is recommended that it is fit by yourself before flight.

Most harnesses are equipped with a pre-installed acceleration system. When fitting any accelerator system ensure that all preinstalled items within the harness, such as roller pulleys are used correctly. After fitting, take into account that you will have to adjust the length of the accelerator lines for correct use. This will vary according to the length of the pilot's legs!

We recommend that you try the correct fitting of the acceleration system on equipment designed to do this, most paragliding schools have this sort of equipment.

## 2.6 INSPECTION AND WING INFLATION ON THE GROUND

Once you have checked all the equipment and made sure that the wind conditions are favourable, inflate your ICEPEAK 7 PRO-MODEL as many times as necessary in order to become acquainted with the wing's behaviour. The ICEPEAK 7 PRO-MODEL inflates easily and smoothly. An excess of energy is not necessary and the wing will inflate with minimum pressure on the harness when you move forward. This may be assisted by using the A lines. Do not pull on them; just accompany the natural rising movement of the wing. Once the wing is in the 12 o'clock position, simply apply correct pressure on the brake lines and the ICEPEAK 7 PRO-MODEL will sit over your head.

## 2.7 ADJUSTING THE BRAKES

The length of the main brake lines is adjusted at the factory to the length established during certification. However, the length can be changed to adapt to the pilots' flying style. Nevertheless, we recommend that you fly for a while with these, set at the original length. This will allow you to become accustomed to the ICEPEAK 7 PRO-MODEL and its unique flying behaviour. If you then decide to change the length of the brake lines, untie the knot, slide the line through the brake link to the desired length, and strongly re-tie the knot. Qualified personnel should carry out this adjustment. You must ensure that this adjustment does not slow down the glider without any pilot input. Both brake lines should be symmetrical and measure the same length. The most recommended knots are the clove hitch knot or bowline knot.

When changing the brakes length, it is necessary to check that they do not act when the accelerator is used. When we accelerate the glider rotates over the B riser and the trailing edge elevates. We must check that the brake is adjusted taking in consideration this extra length in acceleration.

# 3. THE FIRST FLIGHT

## 3.1 CHOOSE THE RIGHT PLACE

We recommend that the first flight with your ICEPEAK 7 PRO-MODEL is made on a smooth slope (a school slope) or in your usual flying area.

## 3.2 PREPARATION

Repeat the procedures detailed in chapter 2 UNPACKING AND ASSEMBLY in order to prepare your equipment.

## 3.3 FLIGHT PLAN

Draw out a flight plan before take-off in order to avoid possible flight

errors.

### 3.4 PRE-FLIGHT CHECK LIST

Once you are ready, but before you take-off, carry out another equipment inspection. Ensure correct installation of all equipment and that all lines are free of hindrances or knots. Check that the weather conditions are suited for your flying skills.

### 3.5 WING INFLATION, CONTROL, AND TAKE-OFF

Smoothly and progressively inflate the wing (chapter 2.6 INSPECTION AND WING INFLATION ON THE GROUND). The ICEPEAK 7 PRO-MODEL inflates easily and does not require excessive energy. It does not tend to over-take you, so the wing inflation phase is carried out without anguish. These take off characteristics provide a perfect control phase and enough time for the pilot to decide whether to accelerate and take off.

Whenever the wind speed allows it, we recommend a reverse launch technique; this type of launch allows you to carry out a better visual check of the wing. The ICEPEAK 7 PRO-MODEL is especially easy to control in this position in strong winds. However, wind speeds up to 25 to 30 km/h are considered strong and extra consideration should be given to any thought of flight.

Preparation and positioning of the wing on the take-off is especially important. Choose a location which is appropriate for the direction of the wind. Position the paraglider as if it were part of a large circle, taking into account the shape of the canopy in flight. All this will assist in a trouble free take-off.

### 3.6 LANDING

The ICEPEAK 7 PRO-MODEL lands excellently, it transforms the wing

speed into lift on the pilot's demand, allowing an enormous margin of error. You will not have to wrap the brake lines around your hand to get greater braking efficiency.

## 4. IN FLIGHT

### 4.1 FLYING IN TURBULENCE

The ICEPEAK 7 PRO-MODEL has an excellent profile to withstand the very different aero-logical conditions so allowing the best possible piloting and stability. It reacts admirably in passive flight, thus offering a high level of safety in turbulent conditions. Nonetheless, the pilot always has to pilot according to the prevailing weather conditions, the pilot is the ultimate safety factor.

We recommend active piloting, making the necessary fine adjustments to keep the wing in control. He/she should stop braking to allow it to fly at the required wing speed after a correction is made. Do not maintain any correction for longer than necessary (braked) this would cause the wing to enter into critical flying situation. Whenever necessary, control a situation, react to it and then re-establish the required speed.

### 4.2 POSSIBLE CONFIGURATIONS

We recommend that training to master these manoeuvres be carried out under the supervision of a competent school.

#### Asymmetric collapse

In spite of the stability of the profile of the ICEPEAK 7 PRO-MODEL, heavy turbulent conditions may cause part of the wing to collapse asymmetrically. This usually happens when the pilot has not foreseen this possible reaction of the wing. When the wing is about to experience an asymmetric collapse the brake lines and the harness will transmit a



loss of pressure to the pilot. To prevent the collapse from happening, pull the brake line corresponding to the compromised side of the wing, this will increase the angle of incidence. If the collapse does happen the ICEPEAK 7 PRO-MODEL will not react violently, the turn tendency is very gradual and it is easily controlled. Lean your body towards the side that is still flying in order to counteract the turn and to maintain a straight course, if necessary slightly slow down the same side. The collapse will normally open by itself but if that does not happen, pull completely on the brake line on the side, which has collapsed (100%). Do this with a firm movement. You may have to repeat this operation to provoke the re-opening. Take care not to over-brake on the side that is still flying (turn control) and when the collapse has been solved; remember to let the wing recover its flying speed.

#### Symmetric collapse

In normal flying conditions the design of the ICEPEAK 7 PRO-MODEL ensures that a symmetric collapse is quite improbable. The profile of the wing has been designed to widely tolerate extreme changes in the angle of incidence. A symmetric collapse may occur in heavy turbulent conditions, on entry or exit of strong thermals or lack of adapting the use of the accelerator to the prevailing air conditions. Symmetrical collapses usually re-inflate without the glider turning but you can symmetrically apply the brake lines with a quick deep pump to quicken the re-inflation. Release the brake lines immediately to recover optimum flight speed.

#### Negative spin

This configuration is out of the normal flight behaviour of the ICEPEAK 7 PRO-MODEL. Certain circumstances however, may provoke this configuration such as trying to turn when the wing is flying at very low speed (while heavily braking). It is not easy to give any recommendations about this situation since it varies depending on the circumstances. Remember that you should restore the relative air speed over the wing. To achieve this, progressively reduce the pressure on the brake lines and let the wing gain speed. The normal reaction would be a lateral surge with a turn tendency no greater than 360° before restoring to normal

flight conditions.

#### Parachutal stall

If it does happen, the feeling would be that the wing would not be advancing; you would feel a kind of instability and a lack of pressure on the brake lines, although the canopy would appear to be correctly inflated. The correct reaction would be to release the pressure on the brake lines and push the A lines forward or rather lean your body to any side WITHOUT PULLING ON THE BRAKE LINES.

#### Deep stall

The possibility of the ICEPEAK 7 PRO-MODEL falling into this configuration during normal flight is very unlikely. This could happen if you are flying at a very low speed, whilst over steering in a number of manoeuvres and in turbulent conditions. To provoke a deep stall you have to take the wing to minimum flight speed by symmetrically pulling the brake lines, when you reach this point, continue pulling until you reach 100% and then hold. The glider will first fall behind you and then situate itself above you, rocking slightly, depending on how the manoeuvre was carried out. When you start to provoke a stall, be positive and do not doubt an instant. Do not release the brake lines when half way through the manoeuvre. This would cause the glider to surge violently forward with great energy and may result in the wing below the pilot. It is very important that the pressure on the brake lines is maintained until the wing is well established vertical above.

To regain normal flight conditions, progressively and symmetrically release the brake lines, letting the speed be re-established. When the wing reaches the maximum advanced position ensure that the brakes are fully released. The wing will now surge forward, this is necessary so that air speed is completely restored over the wing. Do not over brake at this point because the wing needs to recover speed to quit the stall configuration. If you have to control a possible symmetrical front stall, briefly and symmetrically pull on the brake lines and let go even when the wing is still ahead of you.

#### Wing tangle

A wing tangle may happen after an asymmetric collapse, the end of the

wing is trapped between the lines (Cravat). This situation could rapidly cause the wing to turn, although it depends on the nature of the tangle. The correction manoeuvres are the same as those applied in the case of an asymmetrical collapse, control the turn tendency by applying the opposite brake and lean your body against the turn. Then locate the line that reaches the stabiliser that is trapped between the other lines. This line has a different colour and belongs to the external lines of the B riser. Pull on this line until it is tense, this should help to undo the wing tangle. If you cannot undo the tangle, fly to the nearest possible landing spot, control the flying course with your body movements and a little pressure on the opposite brake. Be careful when attempting to undo a tangle if you are flying near a mountainside or near to other paragliders, you may lose control of the flying course and a collision may occur.

#### Over handling

Most flying incidents are caused by incorrect actions of the pilot, which chained one after another creates abnormal flying configurations (a cascade of incidents). You must remember that over handling the wing will lead to critical levels of functioning. The ICEPEAK 7 PRO-MODEL is designed always to try to recover normal flight by itself, do not try to over handle it.

Generally speaking, the reactions of the wing, which follow over handling, are neither due to the input made or the intensity, but the length of time the pilot continues to over handle. You have to allow the profile to re-establish normal flight speed after any type of handling.

#### 4.3 USING THE ACCELERATOR

The profile of the ICEPEAK 7 PRO-MODEL has been designed to fly stable through its entire speed range. It is useful to accelerate when flying in strong winds or in extreme descending air. When you accelerate the wing, the profile becomes more sensitive to possible turbulence and closer to a possible frontal collapse. If you feel a pressure loss, you should release the pressure on the accelerator and pull slightly on the brake lines to increase the angle of incidence. Remember that you have

to re-establish the flight speed after correcting the incidence. It is NOT recommended to accelerate near to the mountainside or in very turbulent conditions. If necessary you will have to constantly adjust the movements and pressure on the accelerator whilst constantly adjusting the pressure applied to the brake lines. This balance is considered to be “active piloting.”

#### 4.4 FLYING WITHOUT BRAKE LINES

The ICEPEAK 7 PRO-MODEL is a new generation 2 liner D class glider which allows piloting with the back risers. The back risers of the ICEPEAK 7 PRO-MODEL have handles conceived to do that.

The ICEPEAK 7 PRO-MODEL allows the classical piloting using only the breaks.

However, piloting using the back risers is now a common technique that allows reaching more control and precision over the wing while keeping the glider accelerated without utilizing the breaks.

#### 4.5 KNOTS IN FLIGHT

The best way to avoid these knots and tangles is to inspect the lines before you inflate the wing for take-off. If you notice a knot before take-off, immediately stop running and do not take-off.

If you have taken-off with a knot you will have to correct the drift by leaning on the opposite side of the knot and apply the brake line on that side too. You can gently try to pull on the brake line to see if the knot becomes unfastened or try to identify the line with the knot in it. Try to pull the identified line to see if the knot undoes. Be very careful when trying to remove a knot. When there are knots in the lines or when they are tangled, do not pull too hard on the brake lines because there is an increased risk of the wing to stalling or negative turn being initiated

Before trying to remove a knot, make sure there are no pilots flying nearby and never try these manoeuvres near the mountainside. If the

knot is too tight and you cannot remove it, carefully and safely fly to the nearest landing place.

## 5. LOSING HEIGHT

The knowledge of the different descent techniques is an important resource to use in certain situations. The most adequate descent method will depend on the particular situation.

We recommend that you learn to use these manoeuvres under the tuition of a competent school.

### 5.1 EARS

Big ears is a moderate descent technique, achieving about  $-3$  or  $-4$  m/s and a reduction in ground speed of between 3 and 5 km/h. Effective piloting then becomes limited. The angle of incidence and the surface wing load also increases. Push on the accelerator to restore the wing's horizontal speed and the angle of incidence.

To activate big ears take either the big ear pulley or outer most line on each A risers and simultaneously, smoothly pull them outward and downward. The wingtips will fold in. Let go of the lines and the big ears will re-inflate automatically. If they do not re-inflate, gently pull on one of the brake lines and then on the opposite one. We recommend that you re-inflate asymmetrically, not to alter the angle of incidence, more so if you are flying near the ground or flying in turbulence.

**Please, read this carefully: risk of full stall!!!**

The ICEPEAK 7 PRO-MODEL has a relatively short brake travel and it should be noted that by reaching for the A3 line to make big ears it is possible to apply brake pressure without realising it. The same happens whilst pulling down the A3 line to make the ears. This can obviously lead to a significant speed decrease.

The ICEPEAK 7 PRO-MODEL has a new high arch concept and applying ears induces more resistance. With this new arch, the ears don't stick but they do tend to "hang". Because of this, there will be more resistance, compared to ears on a standard glider.

The ICEPEAK 7 PRO-MODEL is designed with little cord, which is good in normal flight conditions. However, on the other hand the glider could get into trouble when recovering normal speed if it is allowed ears and achieve an extreme angle of incidence.

These are 3 particularities, which together with turbulent conditions could cause an unintentional stall.

The solution: big ears may still be applied but the pilot must be fully aware of the above-mentioned points and act accordingly. To avoid the stall simply use the accelerator halfway (this is sufficient) to increase the speed, which naturally rises the speed and decreases the angle of incidence. In this way you will maintain a safe margin and avoid this phenomenon. Take care not to pull the brakes while making the ears!!

### 5.2 2C3 TECHNIQUE

On the new generation paragliders the application of big ears can create a high degree of trailing turbulence which in turn creates a significant loss of airspeed. When big ears are applied to high aspect ratio wings the ears tend to "flap" which also adds to the amount of unwanted turbulence.

This new rapid descent technique was first discovered by our Niviuk team Pilots in 2009 while flying a competition prototype wing, which because of its line plan and high aspect ratio would not allow big ears to be applied. In fact big ears on wings with a profile of 2 lines can often prove difficult.

For all these reasons, we advise the use of the 2C3 descent technique on the ICEPEAK 7 PRO-MODEL. This technique ensures a rapid descent is achieved whilst forward wing speed is maintained and so the risk of a

deep stall is eliminated.

HOW?

Locate the 2C3 on your risers and as you would when applying big ears simply pull down firmly and smoothly until you see both wingtips drop back slightly. The forward speed of the glider speed will then reduce slightly, quickly stabilize and then increase. You will then experience a fall rate of around 5-6m/s. Controlled turning of the wing can easily be maintained by weight shifting the harness, exactly the same as you would with big ears. We recommend the application of the speed bar whilst using this technique. To exit the maneuver release the lines as you would with big ears, control the pitch and the wing will quickly adopt normal flight.

This new technique allows a comfortable and controllable rapid descent without the risk of experiencing a “cravat” or “deep stall”.

We advise you to first try this technique in smooth conditions with sufficient altitude above appropriate terrain.

### 5.3 B-LINE STALL

This manoeuvre is not possible with this wing.

### 5.4 SPIRAL DIVE

This is a more effective way for rapidly losing height. You have to know that, the wing can gain a lot of vertical speed and rotation speed (G force). This can cause a loss of orientation and consciousness (blackouts). These are the reasons why it is best to carry out this manoeuvre gradually so your capacity to resist the G forces increases and you will learn to fully appreciate and understand the manoeuvre. Always practice this manoeuvre when flying at high altitude.

To start the manoeuvre, first lean your bodyweight and pull the brake line to the side to which you are leaning. You can regulate the intensity of the

turn by applying a little outside brake.

A paraglider flying at its maximum turn speed can reach -20 m/s, equivalent 70 km/h vertical speed and stabilize in a spiral dive from 15 m/s onwards.

These are the reasons why you should be familiar with the manoeuvre and know how to carry out the exit methods.

To exit this manoeuvre you must progressively release the inside brake and also momentarily apply outside brake. Whilst doing this you must also lean your bodyweight towards the outside. This exit manoeuvre has to be carried out gradually and with smooth movements so you can feel the pressure and speed changes at the same time.

The after effect of the exit manoeuvre is that the glider will rock briefly with lateral surge, depending on how the manoeuvre has been carried out.

Practice these movements at sufficient altitude and with moderation.

## 5.5 SLOW DESCENT TECHNIQUE

Using this technique (do not hurry to descend) we will fly normally, without forcing neither the material nor the pilot. It means looking for descending air areas and turn as it was a thermal – in order to descend. We have to avoid danger areas when looking for descent zones. Safety is the most important thing.

## 6. SPECIAL METHODS

### 6.1 TOWING

The ICEPEAK 7 PRO-MODEL does not experience any problem whilst being towed. Only qualified personnel should handle the qualified

equipment to carry out this operation. The wing has to be inflated in the same way as in normal flight.

## 6.2 ACROBATIC FLIGHT

Although the ICEPEAK 7 PRO-MODEL has been tested by expert acrobatic pilots in extreme situations, it HAS NOT been designed for acrobatic flight and we DO NOT RECOMMEND THE USE OF THIS GLIDER for that use. We consider acrobatic flight to be any form of piloting that is different to normal flight. To learn safely how to master acrobatic manoeuvres you should attend lessons, which are carried out and supervised by a qualified instructor over water. Extreme manoeuvres take you and your wing to centrifugal forces that can reach 4 to 5g.

Materials will wear more quickly than in normal flight. If you do practice extreme manoeuvres we recommend that you submit your wing to a line revision every six months.

## 7. FOLDING INSTRUCTIONS

In order to guarantee the correct preservation of the glider and to keep it in perfect flying condition, we recommend using always an appropriate folding method.

Folding should be carried out cell to cell (accordion style) with the SLE ribs remaining parallel to the leading edge at all times. The same technique should then be applied to STE ribs on the trailing edge and when complete the cell structures along the entire chord of the wing should lay parallel and neatly alongside each other.

The wing should then be folded into three sections of equal width with each section stacked upon the other. In order to avoid placing undue stress on the internal structures when packed, it is important that each section is folded to the same length as the internal structure of the SLE.

Several smaller folds should be avoided.

## 8. CARE AND MAINTENANCE

### 8.1 MAINTENANCE

Careful maintenance of your equipment will ensure continued performance.

The fabric and the lines do not need to be washed, if they become dirty, clean them with a soft damp cloth.

If your wing gets wet with salty water, immerse it in fresh water and dry it away from direct sunlight. The sunlight may damage the materials of your wing and cause premature aging. Once you have landed, do not leave the wing in the sun, store it properly.

If you use your wing in a sandy area, try to avoid the sand from entering through the cell openings of the leading edge. If sand is inside the wing, remove it before folding.

If it gets wet of sea water, you should submerge it into fresh water and let it dry far away from the sun.

### 8.2 STORAGE

It is important that the wing is correctly folded when stored. Store your flying equipment in a cool, dry place away from solvents, fuels or oils. It is not advisable to store your flying equipment in the trunk of your car. Temperatures inside a car parked in the sunlight, can be very high. Inside a rucksack and in the sunlight temperatures can reach 60°C. Weight should not be laid on top of the equipment.

If the flying gear is stored with organic material (such as leaves or insects) inside, the chemical reaction can cause irreparable damage.

### 8.3 CHECKS AND CONTROLS

We strongly recommend that all actions on the glider were advised for professionals.

Always check all the flying equipment before every flight.

In spite of providing much more benefits to the pilots, 2 liner gliders need more care and control of the calibration. The ICEPEAK 7 PRO-MODEL mechanic and UV resistance are one of the highest for this type of line. With a 2 liner glider every little variation on the calibration of the lines has a directly effect on the performance of the wing.

We recommend checking the lines calibration after the first 30 hours +/- of flight. This examination must be taken apart from the regular checking every 100 hours of use or every two years (whichever happens first).

Why is it necessary?

Thanks to the experience acquired with the 2 liner gliders on the previous seasons and to the incessant control task of our R&D team over the Abac Team gliders, we are capable now of predicting how to take appropriately care of this kind of lines to assure the best performance of the profile. Following the controls recommended the glider will keep its original features for longer.

The conditions of the flight zone, the climate area, temperature, humidity, wing load, ...cause a different impact over the wing. That's why the calibration would be set taking in consideration these factors. Only qualified professionals should realize it. Do not modify the wing considering the calibration required for other pilots before being sure that it is really necessary for us.

#### 8.4 REPAIRS

If the wing is damaged, you can temporarily repair it by using the rip stop found in the repair kit, so long as no stitches are involved in the tear. Any

other type of tear must be repaired in a specialized repair shop or by qualified personnel. Do not accept a home repair.

### 9. SAFETY AND RESPONSIBILITY

It is well known that paragliding is considered a high-risk sport, where safety depends on the person who is practising it.

Wrong use of this equipment may cause severe injuries to the pilot, even death. Manufacturers and dealers are not responsible for any act or accident that may be the result of practicing this sport.

You must not use this equipment if you are not trained. Do not take advice or accept any informal training from anyone who is not properly qualified as a flight instructor.

### 10. GUARANTEE

The entire equipment and components are covered by a 2-year guarantee against any manufacture fault.

The guarantee does not cover misuse or abnormal use of the materials.

## 11. TECHNICAL DATA

### 11.1 TECHNICAL DATA

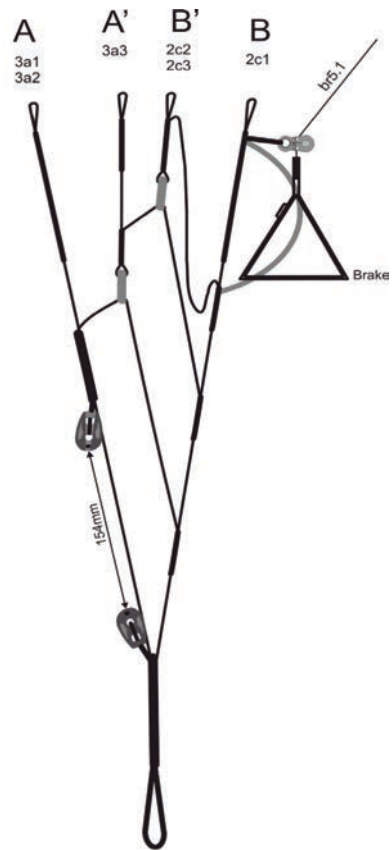
<b>ICEPEAK 7 PRO-MODEL</b>			<b>23</b>	<b>24</b>
CELLS	NUMBER		80	80
	CLOSED		12	12
	BOX		27	27
FLAT	AREA	M2	22,5	24
	SPAM	M	12,94	13,36
	ASPECT RATIO		7,5	7,5
PROJECTED	AREA	M2	19	20
	SPAM		10,41	10,75
	ASPECT RATIO		5,68	5,68
FLATTENING		%	15	15
CORD	MAXIMUM		2,13	2,19
	MINIMUM		0,5	0,51
	AVERAGE		1,73	1,79
LINES	TOTAL METERS	M	194	200
	HEIGHT	M	7,74	7,99
	NUMBER		212	212
	MAIN	6 + braKe	2/1/2/1+b	2/1/2/1/+b
RISERS	NUMBER	2	A/B	A/B
	TRIMS		NO	NO
	ACCELERATOR	m/m	150	150
TOTAL WEIGHT	MINIMUM	KG	85	95
IN FLIGHT	MAXIMUM	KG	105	115
GLIDER WEIGHT		KG	5,5	5,6
CERTIFICATION		EN / LTF	D	D

## 11.2 MATERIALS DESCRIPTION

CANOPY	FABRIC CODE	SUPPLIER
UPPER SURFACE	SKYTEX 40 9017 E25	NCV (FRANCE)
BOTTOM SURFACE	N-20-DMF 36	DOMINICO TEX CO
PROFILES	SKYTEX 40 9017 E29A	NCV (FRANCE)
DIAGONALS	30DMF	DOMINICO TEX CO
LOOPS	LKI - 10	KOLON IND (KOREA)
REINFORCEMENT LOOPS	SOFT DACRON	D-P (GERMANY)
TRAILING EDGE REINFORCEMENT	MYLAR 20	D-P (GERMANY)
RIBS REINFORCEMENT	MYLON STICK	SPORTWARE CO. (CHINA)
THREAD	SERAFIL 60	AMAN (GERMANY)
SUSPENSION LINES	FABRIC CODE	SUPPLIER
UPPER CASCADES	DC-040	LIROS GMBH (GERMANY)
UPPER CASCADES	8000-045	EDELRID (GERMANY)
UPPER CASCADES	8000-060	EDELRID (GERMANY)
MIDDLE CASCADES	DC-060	LIROS GMBH (GERMANY)
MIDDLE CASCADES	12100-050	EDELRID (GERMANY)
MIDDLE CASCADES	16140-070	COUSIN (FRANCE)
MIDDLE CASCADES	12240-115	COUSIN (FRANCE)
MIDDLE CASCADES	12470-200	COUSIN (FRANCE)
MAIN	16330-145	COUSIN (FRANCE)
MAIN	16560-240	COUSIN (FRANCE)
MAIN	12950-405	COUSIN (FRANCE)
MAIN BREAK	TNL-280	TEIJIM LIMITED (JAPAN)
THREAD	SERAFIL 60	AMAN (GERMANY)
RISERS	FABRIC CODE	SUPPLIER
MATERIAL	3455	COUSIN (FRANCE)
COLOR INDICATOR	PAD	TECNI SANGLES (FRANCE)
THREAD	N/F-66	YOUNG CHANG T&C LTD
MAILLONS	MRDIO3.5 S12	PEGUET (FRANCE)
PULLEYS	SERIE 20	RONSTAN (AUSTRALIA)

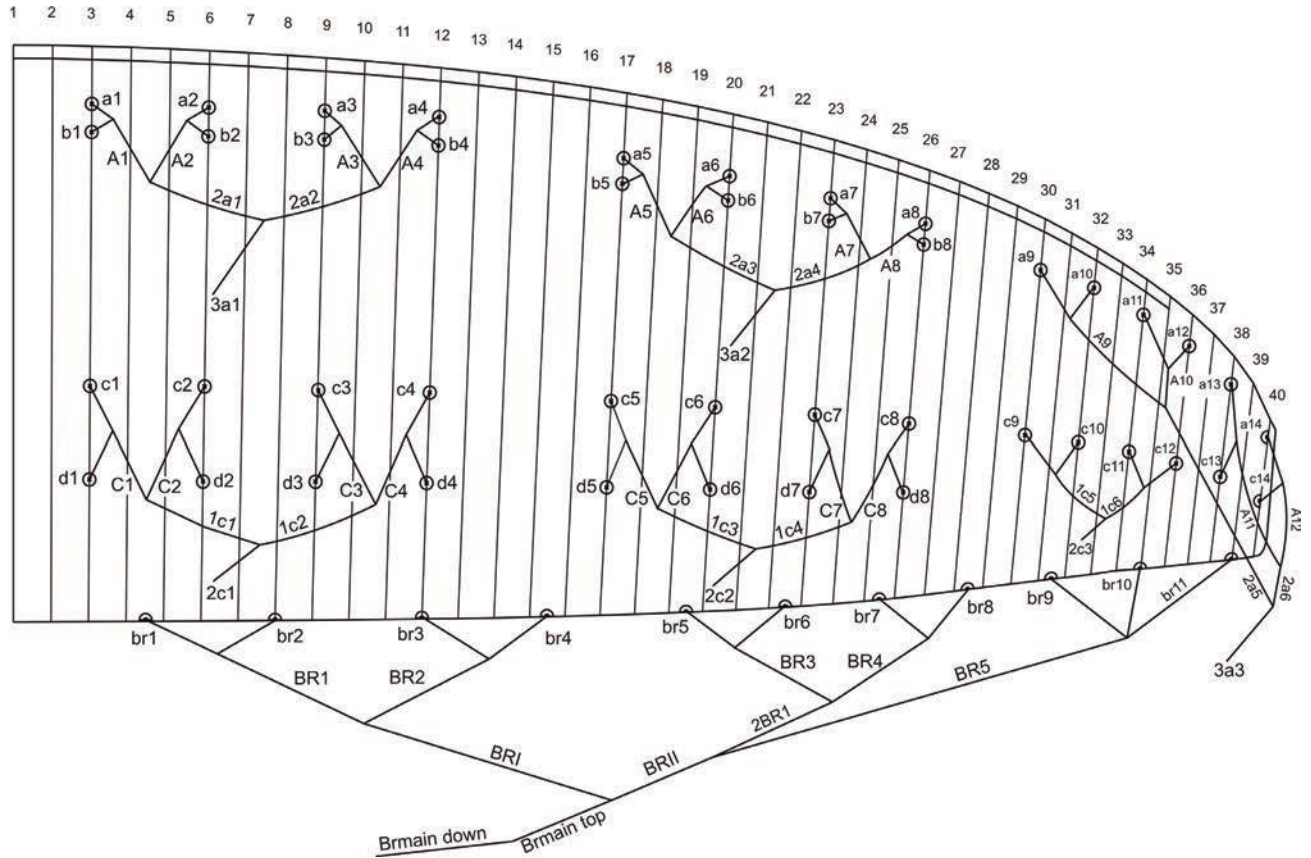


### 11.3 RISER ARRANGEMENT ICEPEAK 7 PRO-MODEL



Risers Icepeak 7 PRO MODEL

11.4 LINE PLAN ICEPEAK 7 PRO-MODEL



## 11.5 LENGTHS ICEPEAK 7 PRO-MODEL 23

### NIVIUK ICEPEAK 7 PRO-MODEL 23

LINES HEIGHT m/m

	A	B	C	D	br
1	7.289	7.256	7.242	7.337	8.006
2	7.166	7.132	7.108	7.215	7.699
3	7.128	7.094	7.081	7.215	7.431
4	7.175	7.144	7.175	7.300	7.393
5	7.062	7.035	7.034	7.164	7.389
6	6.952	6.926	6.918	7.048	7.264
7	6.907	6.883	6.887	7.012	7.274
8	6.941	6.920	6.963	7.061	7.426
9	6.741		6.727		7.349
10	6.656		6.656		7.392
11	6.586		6.621		7.549
12	6.569		6.651		
13	6.506		6.570		
14	6.490		6.567		

RISERS LENGTH m/m

	A	A'	B'	B
STANDARD	500	500	500	500
ACCELERATED	350	425	460	500
TRAVEL	150	75	40	0

## 11.6 LENGTHS ICEPEAK 7 PRO-MODEL 24

### NIVIUK ICEPEAK 7 PRO-MODEL 24

LINES HEIGHT m/m

	A	B	C	D	br
1	7.545	7.510	7.494	7.593	8.242
2	7.419	7.382	7.357	7.468	7.925
3	7.381	7.344	7.330	7.469	7.649
4	7.430	7.396	7.428	7.558	7.610
5	7.314	7.287	7.284	7.419	7.608
6	7.201	7.174	7.164	7.299	7.479
7	7.155	7.129	7.133	7.262	7.489
8	7.190	7.168	7.212	7.312	7.647
9	6.984		6.969		7.569
10	6.895		6.895		7.613
11	6.823		6.859		7.776
12	6.805		6.890		
13	6.740		6.807		
14	6.724		6.803		

RISERS LENGTH m/m

	A	A'	B'	B
STANDARD	500	500	500	500
ACCELERATED	350	425	460	500
TRAVEL	150	75	40	0

## 11.7 CERTIFICATION SPECIMEN TEST

### ICEPEAK 7 PRO-MODEL 23




paragliding by air turquoise

Air Turquoise SA  
Rte du Pré-au-Comte 8 | CH-1304 Villeneuve  
tel. +41 21 965 65 65 | mobile +41 79 202 52 30  
info@para-test.com

---

**AIR TURQUOISE SA certified by**





**Class: D**

In accordance with EN standards 926-2:2005 & 926-1:2006: **PG\_0777.2013**

Date of issue (DMY): **23. 12. 2013**

Manufacturer: **Niviuk Gliders / Air Games S.L.**

Model: **Icepeak 7 Pro-model 23**

Serial number:

---

**Configuration during flight tests**

Paraglider		Accessories	
Maximum weight in flight (kg)	<b>105</b>	Range of speed system (cm)	<b>18</b>
Minimum weight in flight (kg)	<b>85</b>	Speed range using brakes (km/h)	<b>11</b>
Glider's weight (kg)	<b>5.5</b>	Range of trimmers (cm)	<b>0</b>
Number of risers	<b>2</b>	Total speed range with accessories (km/h)	<b>25</b>
Projected area (m2)	<b>19.08</b>		

Harness used for testing (max weight)		Inspections (whichever happens first)	
Harness type	<b>ABS</b>	every 24 months or every 100 flying hours	
Harness brand	<b>Sky Paragliders</b>	Warning! Before use refer to user's manual	
Harness model	<b>Skylight M</b>	Person or company having presented the glider for testing: <b>None</b>	
Harness to risers distance (cm)	<b>49</b>		
Distance between risers (cm)	<b>46</b>		

---

1 2 3 4 5 6 7 8 9 10 11 12 13 14 15 16 17 18 19 20 21 22 23 24

C	A	B	D	A	A	A	A	B	D	C	D	C	D	A	A	D	C	0	C	C	A	A	A
---	---	---	---	---	---	---	---	---	---	---	---	---	---	---	---	---	---	---	---	---	---	---	---

1 2 3 4 5 6 7 8 9 10 11 12 13 14 15 16 17 18 19 20 21 22 23 24

C	A	B	D	A	A	A	A	B	D	D	D	C	C	A	A	D	C	0	C	C	A	A	A
---	---	---	---	---	---	---	---	---	---	---	---	---	---	---	---	---	---	---	---	---	---	---	---

### ICEPEAK 7 PRO-MODEL 24




paragliding by air turquoise

Air Turquoise SA  
Rte du Pré-au-Comte 8 | CH-1304 Villeneuve  
tel. +41 21 965 65 65 | mobile +41 79 202 52 30  
info@para-test.com

---

**AIR TURQUOISE SA certified by**





**Class: D**

In accordance with EN standards 926-2:2005 & 926-1:2006: **PG\_0792.2013**

Date of issue (DMY): **23. 12. 2013**

Manufacturer: **Niviuk Gliders / Air Games S.L.**

Model: **Icepeak 7 Pro-model 24**

Serial number:

---

**Configuration during flight tests**

Paraglider		Accessories	
Maximum weight in flight (kg)	<b>115</b>	Range of speed system (cm)	<b>18</b>
Minimum weight in flight (kg)	<b>95</b>	Speed range using brakes (km/h)	<b>11</b>
Glider's weight (kg)	<b>5.5</b>	Range of trimmers (cm)	<b>0</b>
Number of risers	<b>2</b>	Total speed range with accessories (km/h)	<b>25</b>
Projected area (m2)	<b>20.35</b>		

Harness used for testing (max weight)		Inspections (whichever happens first)	
Harness type	<b>ABS</b>	every 24 months or every 100 flying hours	
Harness brand	<b>Niviuk Gliders</b>	Warning! Before use refer to user's manual	
Harness model	<b>Hamak L</b>	Person or company having presented the glider for testing: <b>Olivier Nef</b>	
Harness to risers distance (cm)	<b>49</b>		
Distance between risers (cm)	<b>46</b>		

---

1 2 3 4 5 6 7 8 9 10 11 12 13 14 15 16 17 18 19 20 21 22 23 24

C	A	B	D	A	A	A	A	B	D	D	D	C	C	A	A	D	C	0	C	C	A	A	A
---	---	---	---	---	---	---	---	---	---	---	---	---	---	---	---	---	---	---	---	---	---	---	---

1 2 3 4 5 6 7 8 9 10 11 12 13 14 15 16 17 18 19 20 21 22 23 24

C	A	B	D	A	A	A	A	B	D	D	D	C	C	A	A	D	C	0	C	C	A	A	A
---	---	---	---	---	---	---	---	---	---	---	---	---	---	---	---	---	---	---	---	---	---	---	---

