

# **ESPECIFICACIONES TÉCNICAS SKATE 2**

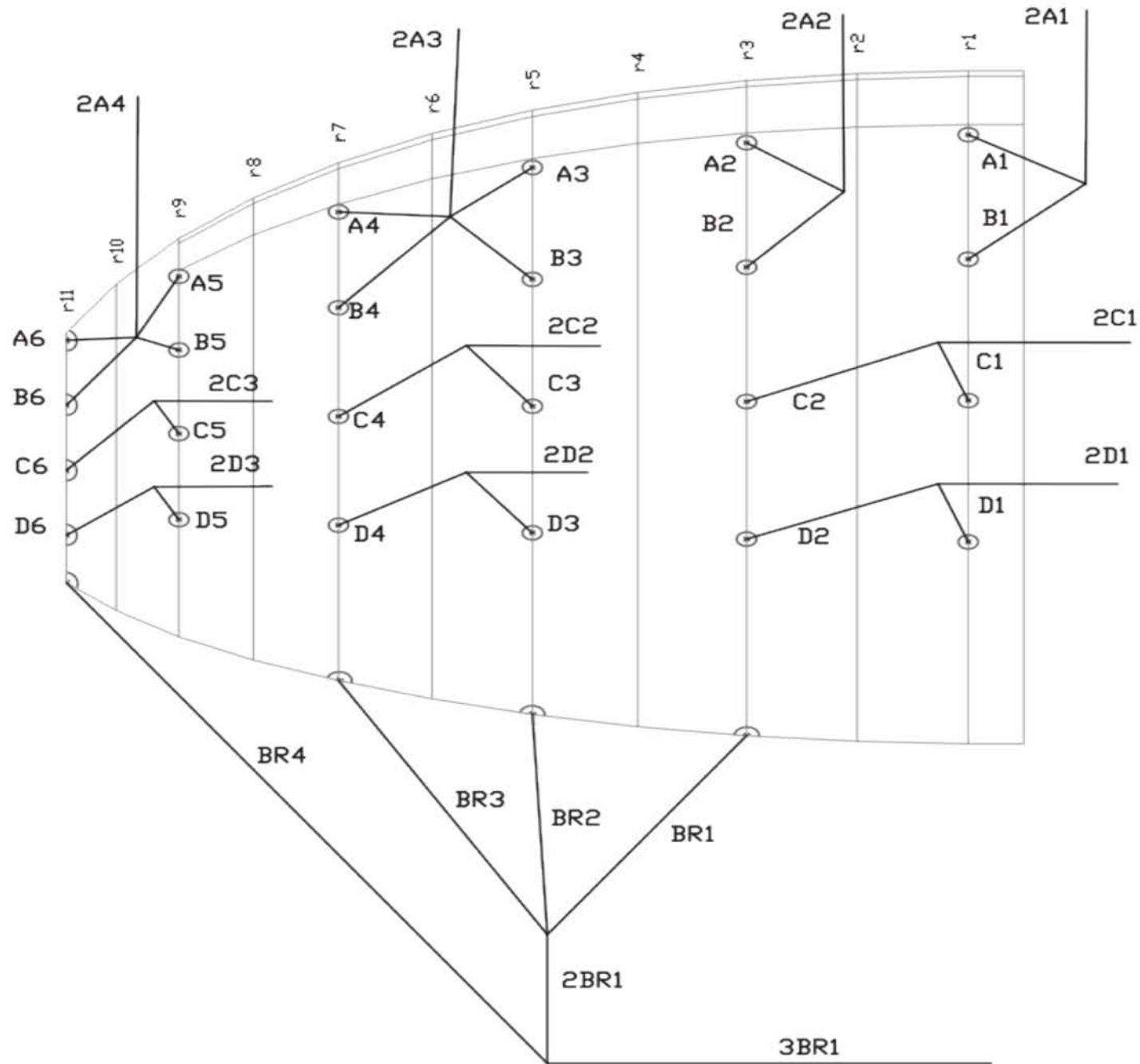


**DATOS TÉCNICOS**

| <b>SKATE 2</b> |                | <b>8</b> | <b>10</b> | <b>12</b> | <b>14</b> |       |
|----------------|----------------|----------|-----------|-----------|-----------|-------|
| ALVÉOLOS       | NÚMERO         | 21       | 21        | 21        | 21        |       |
|                | CERRADOS       | 4        | 4         | 4         | 4         |       |
|                | CAJONES        | 6        | 6         | 6         | 6         |       |
| EN PLANTA      | ÁREA           | M2       | 8         | 10        | 12        | 14    |
|                | ENVERGADURA    | M        | 4,88      | 5,29      | 5,8       | 6,26  |
|                | ALARGAMIENTO   |          | 2,8       | 2,8       | 2,8       | 2,8   |
| PROYECTADO     | ÁREA           | M2       | 7,36      | 9,2       | 11        | 12,81 |
|                | ENVERGADURA    |          | 4,47      | 4,71      | 5,15      | 5,55  |
|                | ALARGAMIENTO   |          | 2,4       | 2,4       | 2,4       | 2,4   |
| BÓVEDA         | %              | 8        | 8         | 8         | 8         |       |
| CUERDA         | MÁXIMA         |          | 2,07      | 2,25      | 2,46      | 2,66  |
|                | MÍNIMA         |          | 0,77      | 0,84      | 0,92      | 0,99  |
|                | MEDIA          |          | 1,6       | 1,8       | 2,06      | 2,2   |
| SUSPENTES      | METROS TOTALES | M        | 100       | 109       | 119       | 129   |
|                | ALTURA         | M        | 2,82      | 3,06      | 3,35      | 3,62  |
|                | NÚMERO         |          | 80        | 80        | 80        | 80    |
|                | PRINCIPALES    |          | 4/3/3     | 4/3/3     | 4/3/3     | 4/3/3 |
| ELEVADORES     | BANDAS         | 3        | A/B/C     | A/B/C     | A/B/C     | A/B/C |
|                | TRIMS          |          | SI        | SI        | SI        | SI    |
|                | ACELERADOR     |          | NO        | NO        | NO        | NO    |
| CARGA TOTAL    | MÍNIMA         | KG       | 6,25      | 5         | 4,1       | 3,5   |
| EN VUELO       | MÁXIMA         | KG       | 13,1      | 11        | 9,5       | 8,5   |
| PESO DEL ALA   |                | KG       | 2,5       | 2,7       | 3         | 3,3   |
| HOMOLOGACIÓN   |                | EN       | 926-1     | 926-1     | 926-1     | 926-1 |

**DATOS TÉCNICOS MATERIALES**

| <b>VELA</b>             | <b>REFERENCIA</b> | <b>FABRICANTE</b>        |
|-------------------------|-------------------|--------------------------|
| EXTRADÓS                | N30DMF            | DOMINICO TEX CO (KOREA)  |
| INTRADÓS                | N30DMF            | DOMINICO TEX CO (KOREA)  |
| PERFILES                | 30DFM             | DOMINICO TEX CO (KOREA)  |
| DIAGONALES              | 30DFM             | DOMINICO TEX CO (KOREA)  |
| CINTAS DE CARGA         | LKI - 10          | KOLON IND. (KOREA)       |
| REFUERZOS CARGA PERFIL  | W-420             | D-P (GERMANY)            |
| REFUERZOS BORDE DE FUGA | MYLAR             | D-P (GERMANY)            |
| REFUERZOS PERFIL        | W-420             | D-P (GERMANY)            |
| HILO                    | SERAFIL 60        | AMAN (GERMANY)           |
| <b>SUSPENTES</b>        | <b>REFERENCIA</b> | <b>FABRICANTE</b>        |
| CONO ALTO               | TLU - 330         | COUSIN (FRANCE)          |
| CONO MEDIO              | TLU - 331         | COUSIN (FRANCE)          |
| PRINCIPAL               | TLU - 550         | COUSIN (FRANCE)          |
| FRENO PRINCIPAL         | TNL - 400         | TEIJIM LIMITED (JAPAN)   |
| HILO                    | SERAFIL 60        | AMAN (GERMANY)           |
| <b>ELEVADORES</b>       | <b>REFERENCIA</b> | <b>FABRICANTE</b>        |
| BANDAS                  | G-R 22            | TECNI SANGLES (FRANCE)   |
| INDICADOR DE COLOR      | PAD               | TECNI SANGLES (FRANCE)   |
| HILO                    | V138              | COATS (ENGLAND)          |
| MAILLONES               | MRI4              | ANSUNG PRECISION (KOREA) |
| POLEAS                  | PY - 1304-2       | ANSUNG PRECISION (KOREA) |





**SLOW POSITION:**  
- MINIMUM SPEED  
- MAXIMUM GLIDE



**NEUTRAL POSITION:**  
- IDEAL POSITION TO TAKE OFF



**FAST POSITION:**  
- MAXIMUM SPEED



**SKATE2 SCHOOL RISERS**

**SKATE2 TRIM RISERS**

### DATOS TÉCNICOS COLORES

|         |   |       |          |            |
|---------|---|-------|----------|------------|
| SKATE 2 | 1 | RUBI  | EXTRADÓS | REF: NK259 |
| 8 MTS   | 2 | WHITE | CUERNO   | REF: 001   |
|         | 3 | BLACK | SOMBRA   | REF: 102   |
|         | 4 | RUBI  | INTRADÓS | REF: NK259 |



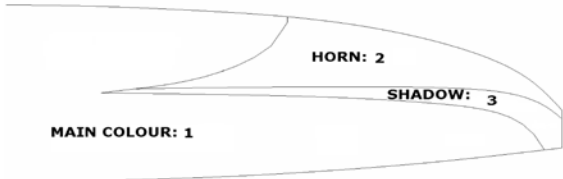
|         |   |            |          |          |
|---------|---|------------|----------|----------|
| SKATE 2 | 1 | ROYAL BKUE | EXTRADÓS | REF: 317 |
| 10 MTS  | 2 | BLACK      | CUERNO   | REF: 102 |
|         | 3 | WHITE      | SOMBRA   | REF: 001 |
|         | 4 | ROYAL BLUE | INTRADÓS | REF: 317 |



|         |   |           |          |             |
|---------|---|-----------|----------|-------------|
| SKATE 2 | 1 | GREY BLUE | EXTRADÓS | REF: NK5405 |
| 12 MTS  | 2 | LIMA      | CUERNO   | REF: NK375  |
|         | 3 | WHITE     | SOMBRA   | REF: 001    |
|         | 4 | GREY BLUE | INTRADÓS | REF: NK5405 |

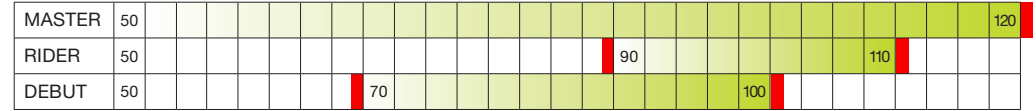


|         |   |           |          |             |
|---------|---|-----------|----------|-------------|
| SKATE 2 | 1 | LIMA      | EXTRADÓS | REF: NK375  |
| 14 MTS  | 2 | GREY BLUE | CUERNO   | REF: NK5405 |
|         | 3 | WHITE     | SOMBRA   | REF: 001    |
|         | 4 | LIMA      | INTRADÓS | REF: NK375  |

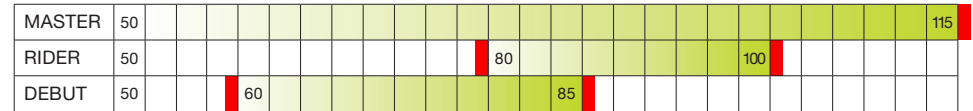


### CARGA ALAR

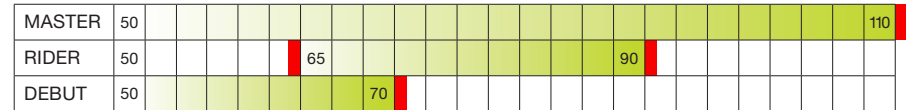
SKATE 2 14M2



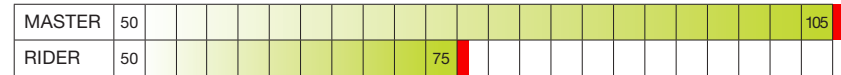
SKATE 2 12M2



SKATE 2 10M2



SKATE 2 8M2



**DATOS TÉCNICOS SUSPENTES**

| SKATE 2 |               |       | 8 MTS |              |       |      |             |       |      |             |       |       |             |       |
|---------|---------------|-------|-------|--------------|-------|------|-------------|-------|------|-------------|-------|-------|-------------|-------|
| REF.    | CODE          | m/m   | REF.  | CODE         | m/m   | REF. | CODE        | m/m   | REF. | CODE        | m/m   | REF.  | CODE        | m/m   |
| A       |               |       | B     |              |       | C    |             |       | D    |             |       | BRAKE |             |       |
| A1      | TLU-330-blue  | 980   | B1    | TLU-330-blue | 1.020 | C1   | TLU-330-ylw | 1.080 | D1   | TLU-330-ylw | 1.090 | br1   | TLU-330-red | 1.560 |
| A2      | TLU-330-blue  | 950   | B2    | TLU-330-blue | 995   | C2   | TLU-330-ylw | 1.070 | D2   | TLU-330-ylw | 1.075 | br2   | TLU-330-red | 1.455 |
| A3      | TLU-330-blue  | 1.090 | B3    | TLU-330-blue | 1.120 | C3   | TLU-330-ylw | 920   | D3   | TLU-330-ylw | 935   | br3   | TLU-330-red | 1.460 |
| A4      | TLU-330-blue  | 1.110 | B3    | TLU-330-blue | 1.170 | C4   | TLU-330-ylw | 950   | D4   | TLU-330-ylw | 950   | br4   | TLU-330-red | 1.905 |
| A5      | TLU-330-blue  | 885   | B5    | TLU-330-blue | 930   | C5   | TLU-330-ylw | 690   | D5   | TLU-330-ylw | 670   |       |             |       |
| A6      | TLU-330-blue  | 890   | B6    | TLU-330-blue | 960   | C6   | TLU-330-ylw | 690   | D6   | TLU-330-ylw | 640   |       |             |       |
| 2 A1    | TLU-550 -blue | 1740  |       |              |       | 2 C1 | TLU-550-ylw | 1.765 | 2 D1 | TLU-550-ylw | 1.905 | 2 br1 | TLU-330-red | 605   |
| 2 A2    | TLU-550 -blue | 1755  |       |              |       | 2 C2 | TLU-550-ylw | 1.920 | 2 D2 | TLU-550-ylw | 2.040 |       |             |       |
| 2 A3    | TLU-550 -blue | 1640  |       |              |       | 2 C3 | TLU-550-ylw | 2.170 | 2 D3 | TLU-550-ylw | 2.280 |       |             |       |
| 2 A4    | TLU-550 -blue | 1875  |       |              |       |      |             |       |      |             |       |       |             |       |
|         |               |       |       |              |       |      |             |       |      |             |       | 3 br1 | TNL-400-RED | 1.425 |
|         |               |       |       |              |       |      |             |       |      |             |       |       | Point a:    | 1.225 |

**DATOS TÉCNICOS SUSPENTES**

| <b>SKATE 2</b> |               |       | <b>10 MTS</b> |              |       |      |             |       |      |             |       |       |             |       |
|----------------|---------------|-------|---------------|--------------|-------|------|-------------|-------|------|-------------|-------|-------|-------------|-------|
| REF.           | CODE          | m/m   | REF.          | CODE         | m/m   | REF. | CODE        | m/m   | REF. | CODE        | m/m   | REF.  | CODE        | m/m   |
| A              |               |       | B             |              |       | C    |             |       | D    |             |       | BRAKE |             |       |
| A1             | TLU-330-blue  | 1.060 | B1            | TLU-330-blue | 1.110 | C1   | TLU-330-ylw | 1.175 | D1   | TLU-330-ylw | 1.185 | br1   | TLU-330-red | 1.690 |
| A2             | TLU-330-blue  | 1.030 | B2            | TLU-330-blue | 1.080 | C2   | TLU-330-ylw | 1.160 | D2   | TLU-330-ylw | 1.165 | br2   | TLU-330-red | 1.580 |
| A3             | TLU-330-blue  | 1.180 | B3            | TLU-330-blue | 1.220 | C3   | TLU-330-ylw | 1.000 | D3   | TLU-330-ylw | 1.020 | br3   | TLU-330-red | 1.585 |
| A4             | TLU-330-blue  | 1.205 | B3            | TLU-330-blue | 1.270 | C4   | TLU-330-ylw | 1.030 | D4   | TLU-330-ylw | 1.030 | br4   | TLU-330-red | 2.070 |
| A5             | TLU-330-blue  | 965   | B5            | TLU-330-blue | 1.010 | C5   | TLU-330-ylw | 750   | D5   | TLU-330-ylw | 725   |       |             |       |
| A6             | TLU-330-blue  | 965   | B6            | TLU-330-blue | 1.040 | C6   | TLU-330-ylw | 750   | D6   | TLU-330-ylw | 695   |       |             |       |
| 2 A1           | TLU-550 -blue | 1885  |               |              |       | 2 C1 | TLU-550-ylw | 1.910 | 2 D1 | TLU-550-ylw | 2.060 | 2 br1 | TLU-330-red | 655   |
| 2 A2           | TLU-550 -blue | 1900  |               |              |       | 2 C2 | TLU-550-ylw | 2.075 | 2 D2 | TLU-550-ylw | 2.200 |       |             |       |
| 2 A3           | TLU-550 -blue | 1775  |               |              |       | 2 C3 | TLU-550-ylw | 2.345 | 2 D3 | TLU-550-ylw | 2.465 |       |             |       |
| 2 A4           | TLU-550 -blue | 2030  |               |              |       |      |             |       |      |             |       |       |             |       |
|                |               |       |               |              |       |      |             |       |      |             |       | 3 br1 | TNL-400-RED | 1.540 |
|                |               |       |               |              |       |      |             |       |      |             |       |       | Point a:    | 1.340 |

**DATOS TÉCNICOS SUSPENTES**

| <b>SKATE 2</b> |              |       | <b>12 MTS</b> |              |       |      |             |       |      |             |             |       |             |             |     |
|----------------|--------------|-------|---------------|--------------|-------|------|-------------|-------|------|-------------|-------------|-------|-------------|-------------|-----|
| REF.           | CODE         | m/m   | REF.          | CODE         | m/m   | REF. | CODE        | m/m   | REF. | CODE        | m/m         | REF.  | CODE        | m/m         |     |
| A              |              |       | B             |              |       | C    |             |       | D    |             |             | BRAKE |             |             |     |
| A1             | TLU-330-blue | 1.165 | B1            | TLU-330-blue | 1.215 | C1   | TLU-330-ylw | 1.285 | D1   | TLU-330-ylw | 1.295       | br1   | TLU-330-red | 1.850       |     |
| A2             | TLU-330-blue | 1.130 | B2            | TLU-330-blue | 1.180 | C2   | TLU-330-ylw | 1.270 | D2   | TLU-330-ylw | 1.275       | br2   | TLU-330-red | 1.720       |     |
| A3             | TLU-330-blue | 1.295 | B3            | TLU-330-blue | 1.335 | C3   | TLU-330-ylw | 1.095 | D3   | TLU-330-ylw | 1.115       | br3   | TLU-330-red | 1.735       |     |
| A4             | TLU-330-blue | 1.320 | B3            | TLU-330-blue | 1.390 | C4   | TLU-330-ylw | 1.130 | D4   | TLU-330-ylw | 1.130       | br4   | TLU-330-red | 2.260       |     |
| A5             | TLU-330-blue | 1.055 | B5            | TLU-330-blue | 1.105 | C5   | TLU-330-ylw | 825   | D5   | TLU-330-ylw | 795         |       |             |             |     |
| A6             | TLU-330-blue | 1.060 | B6            | TLU-330-blue | 1.140 | C6   | TLU-330-ylw | 820   | D6   | TLU-330-ylw | 760         |       |             |             |     |
| 2 A1           |              |       |               |              |       | 2 C1 | TLU-550-ylw | 2.095 | 2 D1 |             | TLU-550-ylw | 2.260 | 2 br1       | TLU-330-red | 725 |
| 2 A2           |              |       |               |              |       | 2 C2 | TLU-550-ylw | 2.280 | 2 D2 |             | TLU-550-ylw | 2.415 |             |             |     |
| 2 A3           |              |       |               |              |       | 2 C3 | TLU-550-ylw | 2.575 | 2 D3 |             | TLU-550-ylw | 2.705 |             |             |     |
| 2 A4           |              |       |               |              |       |      |             |       |      |             |             |       |             |             |     |
|                |              |       |               |              |       |      |             |       |      |             |             | 3 br1 | TNL-400-RED | 1.665       |     |
|                |              |       |               |              |       |      |             |       |      |             |             |       | Point a:    | 1.465       |     |



**DATOS TÉCNICOS SUSPENTES**

| <b>SKATE 2</b> |               |       | <b>14 MTS</b> |              |       |      |             |       |      |             |       |       |             |       |
|----------------|---------------|-------|---------------|--------------|-------|------|-------------|-------|------|-------------|-------|-------|-------------|-------|
| REF.           | CODE          | m/m   | REF.          | CODE         | m/m   | REF. | CODE        | m/m   | REF. | CODE        | m/m   | REF.  | CODE        | m/m   |
| A              |               |       | B             |              |       | C    |             |       | D    |             |       | BRAKE |             |       |
| A1             | TLU-330-blue  | 1.255 | B1            | TLU-330-blue | 1.310 | C1   | TLU-330-ylw | 1.390 | D1   | TLU-330-ylw | 1.400 | br1   | TLU-330-red | 2.000 |
| A2             | TLU-330-blue  | 1.220 | B2            | TLU-330-blue | 1.275 | C2   | TLU-330-ylw | 1.375 | D2   | TLU-330-ylw | 1.380 | br2   | TLU-330-red | 1.870 |
| A3             | TLU-330-blue  | 1.400 | B3            | TLU-330-blue | 1.440 | C3   | TLU-330-ylw | 1.180 | D3   | TLU-330-ylw | 1.205 | br3   | TLU-330-red | 1.875 |
| A4             | TLU-330-blue  | 1.430 | B3            | TLU-330-blue | 1.500 | C4   | TLU-330-ylw | 1.220 | D4   | TLU-330-ylw | 1.220 | br4   | TLU-330-red | 2.450 |
| A5             | TLU-330-blue  | 1.140 | B5            | TLU-330-blue | 1.195 | C5   | TLU-330-ylw | 890   | D5   | TLU-330-ylw | 860   |       |             |       |
| A6             | TLU-330-blue  | 1.145 | B6            | TLU-330-blue | 1.235 | C6   | TLU-330-ylw | 885   | D6   | TLU-330-ylw | 825   |       |             |       |
| 2 A1           | TLU-550 -blue | 2235  |               |              |       | 2 C1 | TLU-550-ylw | 2.265 | 2 D1 | TLU-550-ylw | 2.445 | 2 br1 | TLU-330-red | 775   |
| 2 A2           | TLU-550 -blue | 2250  |               |              |       | 2 C2 | TLU-550-ylw | 2.465 | 2 D2 | TLU-550-ylw | 2.615 |       |             |       |
| 2 A3           | TLU-550 -blue | 2105  |               |              |       | 2 C3 | TLU-550-ylw | 2.785 | 2 D3 | TLU-550-ylw | 2.925 |       |             |       |
| 2 A4           | TLU-550 -blue | 2405  |               |              |       |      |             |       |      |             |       |       |             |       |
|                |               |       |               |              |       |      |             |       |      |             |       | 3 br1 | TNL-400-RED | 1.780 |
|                |               |       |               |              |       |      |             |       |      |             |       |       | Point a:    | 1.580 |

**NIVIUK SKATE 2 8mts**

| LONGITUD LÍNEAS m/m |      |      |      |      |      |
|---------------------|------|------|------|------|------|
|                     | A    | B    | C    | D    | br   |
| 1                   | 2720 | 2760 | 2845 | 2995 | 3390 |
| 2                   | 2705 | 2750 | 2835 | 2980 | 3285 |
| 3                   | 2730 | 2760 | 2840 | 2975 | 3290 |
| 4                   | 2750 | 2810 | 2870 | 2990 | 3130 |
| 5                   | 2760 | 2805 | 2860 | 2950 |      |
| 6                   | 2765 | 2835 | 2860 | 2920 |      |

| LONGITUD BANDAS m/m |     |     |     |        |
|---------------------|-----|-----|-----|--------|
|                     | A   | C   | D   |        |
|                     | 490 | 450 | 420 | LENTO  |
|                     | 490 | 490 | 490 | NEUTRO |
|                     | 490 | 540 | 590 | RÁPIDO |

**NIVIUK SKATE 2 12mts**

| LONGITUD LÍNEAS m/m |      |      |      |      |      |
|---------------------|------|------|------|------|------|
|                     | A    | B    | C    | D    | br   |
| 1                   | 3235 | 3285 | 3380 | 3555 | 4040 |
| 2                   | 3215 | 3265 | 3365 | 3535 | 3910 |
| 3                   | 3245 | 3285 | 3375 | 3530 | 3925 |
| 4                   | 3270 | 3345 | 3410 | 3545 | 3725 |
| 5                   | 3280 | 3330 | 3400 | 3500 |      |
| 6                   | 3285 | 3365 | 3395 | 3465 |      |

| LONGITUD BANDAS m/m |     |     |     |        |
|---------------------|-----|-----|-----|--------|
|                     | A   | C   | D   |        |
|                     | 490 | 450 | 420 | LENTO  |
|                     | 490 | 490 | 490 | NEUTRO |
|                     | 490 | 540 | 590 | RÁPIDO |

**NIVIUK SKATE 2 10mts**

| LONGITUD LÍNEAS m/m |      |      |      |      |      |
|---------------------|------|------|------|------|------|
|                     | A    | B    | C    | D    | br   |
| 1                   | 2945 | 2995 | 3085 | 3245 | 3685 |
| 2                   | 2930 | 2980 | 3070 | 3225 | 3575 |
| 3                   | 2955 | 2995 | 3075 | 3220 | 3580 |
| 4                   | 2980 | 3045 | 3105 | 3230 | 3410 |
| 5                   | 2995 | 3040 | 3095 | 3190 |      |
| 6                   | 2995 | 3070 | 3095 | 3160 |      |

| LONGITUD BANDAS m/m |     |     |     |        |
|---------------------|-----|-----|-----|--------|
|                     | A   | C   | D   |        |
|                     | 490 | 450 | 420 | LENTO  |
|                     | 490 | 490 | 490 | NEUTRO |
|                     | 490 | 540 | 590 | RÁPIDO |

**NIVIUK SKATE 2 14mts**

| LONGITUD LÍNEAS m/m |      |      |      |      |      |
|---------------------|------|------|------|------|------|
|                     | A    | B    | C    | D    | br   |
| 1                   | 3490 | 3545 | 3655 | 3845 | 4355 |
| 2                   | 3470 | 3525 | 3640 | 3825 | 4225 |
| 3                   | 3505 | 3545 | 3645 | 3820 | 4230 |
| 4                   | 3535 | 3605 | 3685 | 3535 | 4030 |
| 5                   | 3545 | 3600 | 3675 | 3785 |      |
| 6                   | 3550 | 3640 | 3670 | 3750 |      |

| LONGITUD BANDAS m/m |     |     |     |        |
|---------------------|-----|-----|-----|--------|
|                     | A   | C   | D   |        |
|                     | 490 | 450 | 420 | LENTO  |
|                     | 490 | 490 | 490 | NEUTRO |
|                     | 490 | 540 | 590 | RÁPIDO |

**DATOS TÉCNICOS SUSPENTAJE**

**SKATE 2**

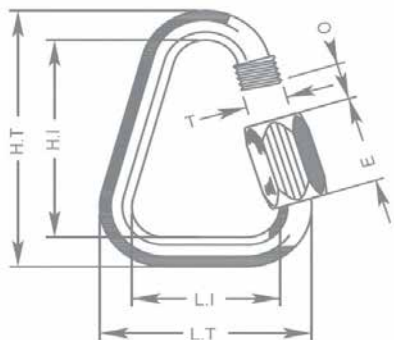
|                                 |              |           |           |           |
|---------------------------------|--------------|-----------|-----------|-----------|
| CÓDIGO MATERIAL                 |              | TLU-16650 | TLU-12999 | TNL       |
| CÓDIGO CARGA                    |              | 330       | 550       | 400       |
| DIÁMETRO m/m                    | ∅            | 1,6       | 1,9       | 2,3       |
| MATERIAL ALMA                   |              | DYNEEMA   | DYNEEMA   | TECHNORA  |
| MATERIAL FUNDA                  |              | NO        | NO        | POLYESTER |
| PESO G/M                        | TOTAL        | 1,51      | 2,3       | 4         |
| CARGA DE RUPTURA                | MÍNIMA       | 300       | 500       | 460       |
|                                 | MÁXIMA       | 330       | 550       | 470       |
| RESISTENCIA DESPUÉS             |              |           |           |           |
| DE 5.000 CICLOS                 | TEST EN      | 246       | 487       | 160,1     |
| DE TORSIÓN                      |              |           |           |           |
| ALARGAMIENTO A                  | 5 daN en %   | 0,1       | 0,1       | 0,05      |
|                                 | 10 daN en %  | 0,2       | 0,15      | 0,1       |
|                                 | 15 daN en %  | 0,3       | 0,2       | 0,2       |
|                                 | 20 daN en %  | 0,4       | 0,3       | 0,2       |
|                                 | 25 daN en %  | 0,45      | 0,4       | 0,3       |
|                                 | 30 daN en %  | 0,8       | 0,5       | 0,6       |
|                                 | 75 daN en %  | 1,2       | 0,6       | 0,8       |
|                                 | 100 daN en % | 0,5       | 0,8       | 1,1       |
|                                 | 125 daN en % | 0,8       | 0,9       | 1,4       |
|                                 | 150 daN en % | 2,2       | 1,1       | 1,7       |
|                                 | 175 daN en % | 2,5       | 1,3       | 2         |
|                                 | 200 daN en % | 2,7       | 1,4       | 2,2       |
|                                 | 250 daN en % | 3         | 1,5       |           |
| ALARGAMIENTO CON CARGA MÁXIMA % |              | 4         | 3,3       | 4,6       |

## DATOS TÉCNICOS MAILLON

### DESCRIPCIÓN

|            |                  |
|------------|------------------|
| MAILLON    | DELTA            |
| REFERENCIA | MRI4             |
| MATERIAL   | ACERO INOXIDABLE |
| DIÁMETRO   | 4,3 m/m          |
| PESO       | 12 G/PIEZA       |

### ESPECIFICACIONES TÉCNICAS



| DIMENSIONES | m/m |
|-------------|-----|
| L.T.        | 28  |
| L.I.        | 20  |
| H.T.        | 38  |
| H.I.        | 30  |
| O           | 4   |
| E           | 11  |
| T           | 4   |
| CARGA       | KG  |
| TRABAJO     | 150 |
| ROTURA      | 750 |

### MATERIAL

AI SI 304 ACERO INOXIDABLE

CONTROL SISTEMÁTICO DE LOS CIERRES DE CADA MAILLON ANTES DE CADA VUELO.

## DATOS TÉCNICOS HILO

### HILO VELERIA

|                           |                          |
|---------------------------|--------------------------|
| NOMBRE                    | SERAFIL                  |
| REFERENCIA                | 60                       |
| MATERIAL                  | POLYESTER                |
| ACABADO                   | SILK                     |
| DENSIDAD LINEAL           | NM 61 / 3 (DTEX 163 * 3) |
| RESISTENCIA A LA TRACCIÓN | 3,000 CN                 |
| ALARGAMIENTO              | 17,00%                   |

### PROPIEDADES SERAFIL

|                                |                     |
|--------------------------------|---------------------|
| SOLIDEZ A LA LUZ ARTIFICIAL    | ISO 105 B02 > 5 - 6 |
| SOLIDEZ AL SUDOR               | ISO 105 E04 > 4     |
| SOLIDEZ AL LAVADO              | ISO 105 C04 > 3     |
| SOLIDEZ AL FROTAMIENTO EN SECO | ISO 105 X12 > 4     |
| SOLIDEZ AL LAVADO EN SECO      | ISO 105 D01 > 3 - 4 |

|                                   |    |
|-----------------------------------|----|
| TRATAMIENTO DE REPELENCIA AL AGUA | WR |
|-----------------------------------|----|

### BANDAS

|                           |                     |
|---------------------------|---------------------|
| NOMBRE                    | COATS BONDED C.F.P. |
| REFERENCIA                | V138                |
| MATERIAL                  | POLYESTER           |
| ACABADO                   | SILK                |
| RESISTENCIA A LA TRACCIÓN | 9,5 KG              |
| ALARGAMIENTO              | 19%                 |

## DATOS TÉCNICOS ELEVADORES

### BANDAS

|                           |            |
|---------------------------|------------|
| REFERENCIA                | G-R 22     |
| MATERIAL                  | POLYESTER  |
| ANCHO                     | 22 M/M     |
| GRUESO                    | 1,52 M/M   |
| RESISTENCIA A LA TRACCIÓN | 1,100DAN   |
| ALARGAMIENTO              | MAX. 15%   |
| PESO                      | 25 G* L.M. |
| COLOR                     | BLACK      |

### INDICADOR COLOR

|                        |             |
|------------------------|-------------|
| REFERENCIA             | IC-G 1-2    |
| MATERIAL               | POLYESTER   |
| ANCHO                  | 70 M/M      |
| GRUESO                 | 0,80 M/M    |
| RESISTENCIA ALA ROTURA | 130 DN      |
| ALARGAMIENTO           | 35 %        |
| PESO                   | 32 G * L.M. |
| COLOR                  | GREEN       |

### CINTAS DE CARGA

|                           |          |
|---------------------------|----------|
| REFERENCIA                | LKI - 10 |
| MATERIAL                  | NYLON    |
| ANCHO                     | 10 M/M   |
| RESISTENCIA A LA TRACCIÓN | 84 KG    |
| ALARGAMIENTO              | 30 %     |
| PESO                      | 5,5 G/M  |
| COLOR                     | WHITE    |

