

TECHNICAL SPECIFICATIONS



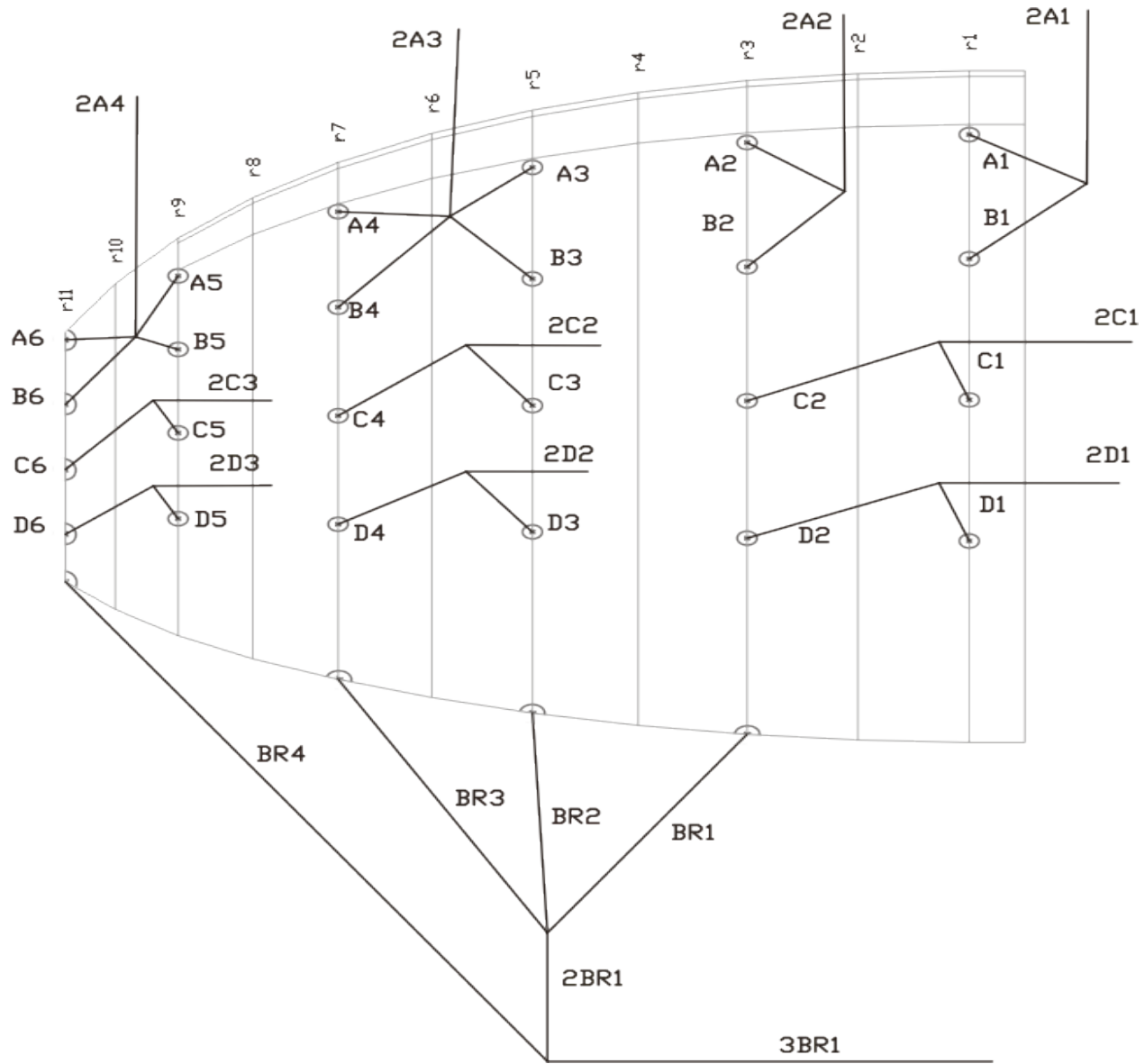
SKATE

TECHNICAL DATA

SKATE		8	10	12	14	
CELLS	NUMBER	21	21	21	21	
	CLOSED	4	4	4	4	
	BOX	6	6	6	6	
FLAT	AREA	M2	8	10	12	14
	SPAN	M	4,88	5,29	5,8	6,26
	ASPECT RATIO		2,8	2,8	2,8	2,8
PROJECTED	AREA	M2	7,36	9,2	11	12,81
	SPAN	M	4,47	4,71	5,15	5,55
	ASPECT RATIO		2,4	2,4	2,4	2,4
FLATTENING		%	8	8	8	8
CORD	MAXIMUM	M	2,07	2,25	2,46	2,66
	MINIMUM	M	0,77	0,84	0,92	0,99
	AVERAGE		1,6	1,8	2,06	2,2
LINES	TOTAL METERS	M	100	109	119	129
	HEIGHT	M	2,82	3,06	3,35	3,62
	NUMBER		80	80	80	80
	MAIN		4+3+3	4+3+3	4+3+3	4+3+3
RISERS	NUMBER	3	A/B/C	A/B/C	A/B/C	A/B/C
	TRIMS		YES	YES	YES	YES
SUSPENTES	MAIN		-	4+6	4+6	4+6
LINES SCHOOL	NUMBER	2	-	A/B	A/B	A/B
	TRIMS		-	NO	NO	NO
WING LOAD	MAXIMUM	KG	13,1	11	9,5	8,5
	MINIMUM	KG	6,25	5	4,1	3,5
GLIDER WEIGHT		KG	2,5	2,7	3	3,3
CERTIFICATION			EN 926-1	EN 926-1	EN 926-1	EN 926-1

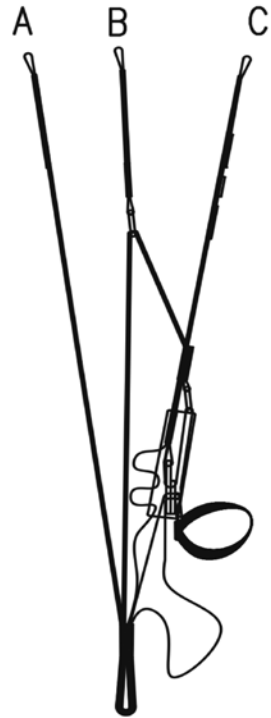
MATERIALS DESCRIPTION

CANOPY	FABRIC CODE	SUPPLIER
UPPER SURFACE	30D ME	DOMINICO
BOTTOM SURFACE	30D ME	DOMINICO
PROFILES	30D FM	DOMINICO
DIAGONALS	30D FM	DOMINICO
LOOPS	LKI - 13 / LKI - 10	KOLON INDRUSTIAL (KOREA)
REINFORCEMENT LOOPS	W-420	D-P (GERMANY)
TRAILING EDGE REINFORCEMENT	MYLAR 13 M/M	D-P (GERMANY)
RIBS REINFORCEMENTS	W-420	D-P (GERMANY)
THREAD	SERAFIL 40	AMAN (GERMANY)
SUSPENSION LINES	FABRIC CODE	SUPPLIER
UPPER CASCADES	DYNEEMA SK-65	DSM (NETHERLAND)
MIDDLE CASCADES	DYNEEMA SK-65	DSM (NETHERLAND)
MAIN	TOP LINE ULTIMATE12999	COUSIN TRESTREC (FRANCE)
BRAKE	DYNEEMA SK-65	DSM (NETHERLAND)
MAIN BRAKE	TNL 400	TEIJIN LIMITED (JAPAN)
THREAD	SERAFIL 60	AMAN (GERMANY)
RISERS	FABRIC CODE	SUPPLIER
MATERIAL	RP - 20	GUTH & WOLF (GERMANY)
THREAD	N/F-66	YOUNG CHANG T&C LTD
MAILLONS	MRI4	ANSUNG PRECISION (KOREA)

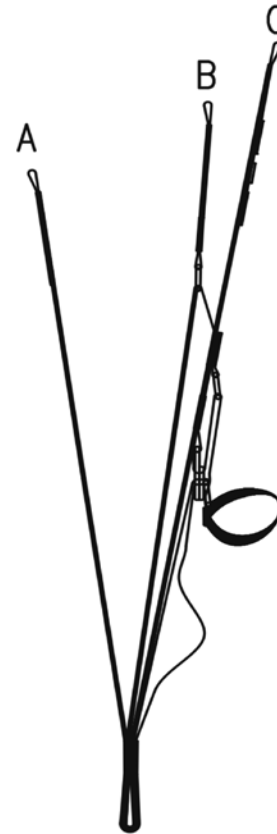




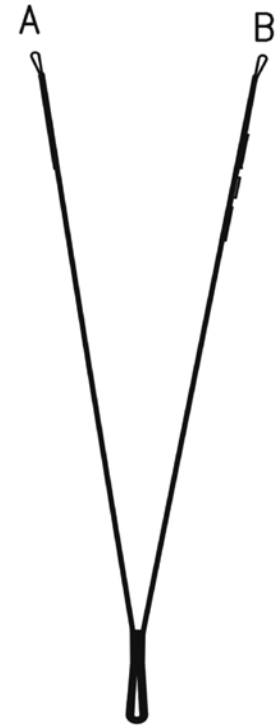
SLOW POSITION:
. MINIMUM SPEED
. MAXIMUM GLIDE



NEUTRAL POSITION:
. IDEAL POSITION TO TAKE OFF



FAST POSITION:
. MAXIMUM SPEED



SKATE SCHOOL RISERS

SKATE TRIM RISERS

COLORS TECHNICAL DATA

SKATE 14	1	DEEP BLUE	MAIN COLOR	REF: 354
	2	DARK GREY	HORN	REF: 121
	3	WHITE	SHADOW	REF: 001



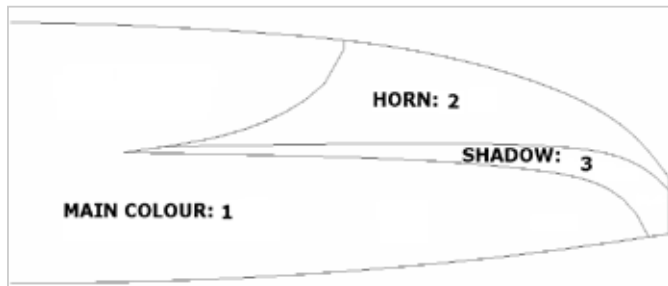
SKATE 12	1	DARK GREY	MAIN COLOR	REF: 121
	2	DRAGON RED	HORN	REF: 636
	3	ORANGE	SHADOW	REF: 744



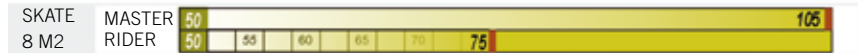
SKATE 10	1	DRAGON RED	MAIN COLOR	REF: 636
	2	DARK GREY	HORN	REF: 121
	3	WHITE	SHADOW	REF: 001



SKATE 8	1	BLACK	MAIN COLOR	REF: 102
	2	SUNFLOWER	HORN	REF: 921
	3	DRAGON RED	SHADOW	REF: 636



WING LOAD



LINES TECHNICAL DATA

SKATE 8

REF.	CODE	CM.	REF.	CODE	CM.	REF.	CODE	CM.	REF.	CODE	CM.	REF.	CODE
A			B			C			D			BRAKE	
A1	SK65-225-34	98	B1	SK65-225-34	102	C1	SK65-225-34	108	D1	SK65-225-34	109	BR1	SK65-225-35 156
A2	SK65-225-34	95	B2	SK65-225-34	99,5	C2	SK65-225-34	107	D2	SK65-225-34	107,5	BR2	SK65-225-35 145,5
A3	SK65-225-34	109	B3	SK65-225-34	112	C3	SK65-225-34	92	D3	SK65-225-34	93,5	BR3	SK65-225-35 146
A4	SK65-225-34	111	B4	SK65-225-34	117	C4	SK65-225-34	95	D4	SK65-225-34	95	BR4	SK65-225-35 190,5
A5	SK65-225-34	88,5	B5	SK65-225-34	93	C5	SK65-225-34	69	D5	SK65-225-34	67		
A6	SK65-225-34	89	B6	SK65-225-34	96	C6	SK65-225-34	69	D6	SK65-225-34	64		
2 A1	TLU-500-12	174				2 C1	TLU-500-30	176,5	2 D1	TLU-500-30	190,5	2 BR1	SK65-225-35 60,5
2 A2	TLU-500-12	175,5				2 C2	TLU-500-30	192	2 D2	TLU-500-30	204		
2 A3	TLU-500-12	164				2 C3	TLU-500-30	217	2 D3	TLU-500-30	228		
2 A4	TLU-500-12	187,5											
												3 BR1	TNL-400-35 142,5
												POINT AT:	122,5

LINES TECHNICAL DATA

SKATE 10

REF.	CODE	CM.	REF.	CODE	CM.	REF.	CODE	CM.	REF.	CODE	CM.	REF.	CODE	
A			B			C			D			BRAKE		
A1	SK65-225-34	106	B1	SK65-225-34	111	C1	SK65-225-34	117,5	D1	SK65-225-34	118,5	BR1	SK65-225-35	169
A2	SK65-225-34	103	B2	SK65-225-34	108	C2	SK65-225-34	116	D2	SK65-225-34	116,5	BR2	SK65-225-35	158
A3	SK65-225-34	118	B3	SK65-225-34	122	C3	SK65-225-34	100	D3	SK65-225-34	102	BR3	SK65-225-35	158,5
A4	SK65-225-34	120,5	B4	SK65-225-34	127	C4	SK65-225-34	103	D4	SK65-225-34	103	BR4	SK65-225-35	207
A5	SK65-225-34	96,5	B5	SK65-225-34	101	C5	SK65-225-34	75	D5	SK65-225-34	72,5			
A6	SK65-225-34	96,5	B6	SK65-225-34	104	C6	SK65-225-34	75	D6	SK65-225-34	69,5			
2 A1	TLU-500-12	188,5				2 C1	TLU-500-30	191	2 D1	TLU-500-30	206	2 BR1	SK65-225-35	65,5
2 A2	TLU-500-12	190				2 C2	TLU-500-30	207,5	2 D2	TLU-500-30	220			
2 A3	TLU-500-12	177,5				2 C3	TLU-500-30	234,5	2 D3	TLU-500-30	246,5			
2 A4	TLU-500-12	203												
												3 BR1	TNL-400-35	154
														POINT AT: 134

LINES TECHNICAL DATA

SKATE 12

REF.	CODE	CM.	REF.	CODE	CM.	REF.	CODE	CM.	REF.	CODE	CM.	REF.	CODE
A			B			C			D			BRAKE	
A1	SK65-225-34	116,5	B1	SK65-225-34	121,5	C1	SK65-225-34	128,5	D1	SK65-225-34	129,5	BR1	SK65-225-35 185
A2	SK65-225-34	113	B2	SK65-225-34	118	C2	SK65-225-34	127	D2	SK65-225-34	127,5	BR2	SK65-225-35 172
A3	SK65-225-34	129,5	B3	SK65-225-34	133,5	C3	SK65-225-34	109,5	D3	SK65-225-34	111,5	BR3	SK65-225-35 173,5
A4	SK65-225-34	132	B4	SK65-225-34	139	C4	SK65-225-34	113	D4	SK65-225-34	113	BR4	SK65-225-35 226
A5	SK65-225-34	105,5	B5	SK65-225-34	110,5	C5	SK65-225-34	82,5	D5	SK65-225-34	79,5		
A6	SK65-225-34	106	B6	SK65-225-34	114	C6	SK65-225-34	82	D6	SK65-225-34	76		
						2 C1	TLU-500-30	209,5	2 D1	TLU-500-30	226	2 BR1	SK65-225-35 72,5
2 A1	TLU-500-12	207				2 C2	TLU-500-30	228	2 D2	TLU-500-30	241,5		
2 A2	TLU-500-12	208,5				2 C3	TLU-500-30	257,5	2 D3	TLU-500-30	270,5		
2 A3	TLU-500-12	195											
2 A4	TLU-500-12	222,5											
												3 BR1	TNL-400-35 166,5
												POINT AT:	146,5

LINES TECHNICAL DATA

SKATE 14

REF.	CODE	CM.	REF.	CODE	CM.	REF.	CODE	CM.	REF.	CODE	CM.	REF.	CODE	
A			B			C			D			BRAKE		
A1	SK65-225-34	125,5	B1	SK65-225-34	131	C1	SK65-225-34	139	D1	SK65-225-34	140	BR1	SK65-225-35 200	
A2	SK65-225-34	122	B2	SK65-225-34	127,5	C2	SK65-225-34	137,5	D2	SK65-225-34	138	BR2	SK65-225-35 187	
A3	SK65-225-34	140	B3	SK65-225-34	144	C3	SK65-225-34	118	D3	SK65-225-34	120,5	BR3	SK65-225-35 187,5	
A4	SK65-225-34	143	B4	SK65-225-34	150	C4	SK65-225-34	122	D4	SK65-225-34	122	BR4	SK65-225-35 245	
A5	SK65-225-34	114	B5	SK65-225-34	119,5	C5	SK65-225-34	89	D5	SK65-225-34	86			
A6	SK65-225-34	114,5	B6	SK65-225-34	123,5	C6	SK65-225-34	88,5	D6	SK65-225-34	82,5			
						2 C1	TLU-500-30	226,5	2 D1	TLU-500-30	244,5	2 BR1	SK65-225-35 77,5	
2 A1	TLU-500-12	223,5							2 C2	TLU-500-30	246,5	2 D2	TLU-500-30	261,5
2 A2	TLU-500-12	225							2 C3	TLU-500-30	278,5	2 D3	TLU-500-30	292,5
2 A3	TLU-500-12	210,5												
2 A4	TLU-500-12	240,5												
												3 BR1	TNL-400-35 178	
												POINT AT:	158	

NIVIUK SKATE 8

LINES HEIGHT CM.

	A	B	C	D	BR
1	272	276	284,5	299,5	339
2	270,5	275	283,5	298	328,5
3	273	276	284	297,5	329
4	275	281	287	299	313
5	276	280,5	286	295	
6	276,5	283,5	286	292	

RISERS LENGTHS CM.

	A	C	D	
	50	45	40	SLOW
	50	50	50	NEUTRAL
	50	55	60	FAST

NIVIUK SKATE 10

LINES HEIGHT CM.

	A	B	C	D	BR
1	294,5	299,5	308,5	324,5	368,5
2	293	298	307	322,5	357,5
3	295,5	299,5	307,5	322	358
4	298	304,5	310,5	323	341
5	299,5	304	309,5	319	
6	299,5	307	309,5	316	

RISERS LENGTHS CM.

	A	C	D	
	50	45	40	SLOW
	50	50	50	NEUTRAL
	50	55	60	FAST

SCHOOL

50	50
----	----

NIVIUK SKATE 12

LINES HEIGHT CM.					
	A	B	C	D	BR
1	323,5	328,5	338	355,5	404
2	321,5	326,5	336,5	353,5	391
3	324,5	328,5	337,5	353	392,5
4	327	334,5	341	354,5	372,5
5	328	333	340	350	
6	328,5	336,5	339,5	346,5	

RISERS LENGTHS CM.			
	A	C	D
	50	45	40
			SLOW
	50	50	50
			NEUTRAL
	50	55	60
			FAST

SCHOOL	
50	50

NIVIUK SKATE 14

LINES HEIGHT CM.					
	A	B	C	D	BR
1	349	354,5	365,5	384,5	435,5
2	347	352,5	364	382,5	422,5
3	350,5	354,5	364,5	382	423
4	353,5	360,5	368,5	353,5	403
5	354,5	360	367,5	378,5	
6	355	364	367	375	

RISERS LENGTHS CM.			
	A	C	D
	50	45	40
			SLOW
	50	50	50
			NEUTRAL
	50	55	60
			FAST

SCHOOL	
50	50

SUSPENSION TECHNICAL DATA

MATERIAL		DYNEEMA	DYNEEMA	KEVLAR
CODE MATERIAL		SK-65	TLU	TNL
CODE STRENGTH	KG	225	574	400
CODE COLOUR	YLW		30	
	RED	35		35
	GRY		12	
	BLU	34		
DIAMETER IN M/M	Ø	1,4	1,9	2,3
MATERIAL CORE		DYNEEMA	DYNEEMA	KEVLAR
WITHOUT SLEEVE		-	-	
WEIGHT METER G/M	TOTAL	1,6	2,3	
	CORE	-	-	
	SLEEVE	-	-	
BREAKING STRENGTH	MIN DAN	225	500	400
	MAX DAN	-	550	470
	SINGLE KNOT DAN	-	-	
STRENGTH Ø AFTER				
5.000 BENDING	TEST DHV DAN	-	487	-
CYCLES				
ELONGATION AT	5 DAN EN %		0,05	
	10 DAN EN %		0,1	
	15 DAN EN %		0,15	
	20 DAN EN %		0,15	
	25 DAN EN %		0,3	
	50 DAN EN %		0,35	
	75 DAN EN %		0,5	
	100 DAN EN %		0,7	
	125 DAN EN %		0,85	
	150 DAN EN %		1	
	175 DAN EN %		1,2	
	200 DAN EN %		1,45	
ELONGATION MAX. BREAKING STRENGTH %		-	2,6	-

1 DAN = 10 N = CA. 1 KG.

FABRIC TECHNICAL DATA**DESCRIPTION**

DOMINICO	30D ME
FABRIC	ME
TYPE OF FINISH	PU COATED AND WATER REPELLENT FINISHED
TYPE OF YARN	NYLON 30D - 66
WIDTH	60"
PATTERN	RIPSTOP

TECHNICAL SPECIFICATIONS

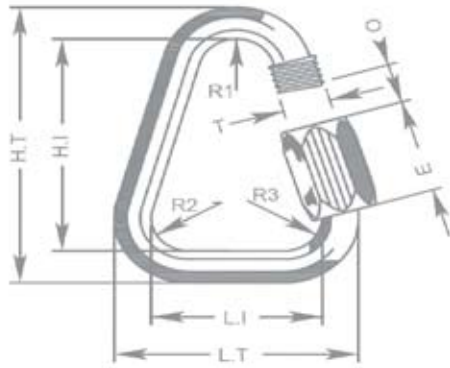
COATED FABRIC'S WEIGHT	G/M2	44
TEAR STRENGTH - WARP	KG	3
TEAR STRENGTH - WEFT	KG	3
ELONGATION ON BIAS 5 LBS	%	17
ELONGATION ON BIAS 10 LBS	%	25
BREAK STRENGTH	KG	40 MINI
WARP DIRECTION		
BREAK STRENGTH WEFT DIRECTION	KG	40 MINI
AIR POROSITY	L / M2 / MN	40 MAXI

MAILLON TECHNICAL DATA

DESCRIPTION

MAILLON	DELTA
CODE	MR14
MATERIAL	STAINLESS STEEL
SIZE	4,3 M/M
WEIGHT	12 G/PC

TECHNICAL SPECIFICATIONS



DIMENSIONS	M/M
L.T.	28
L.I.	20
H.T.	38
H.I.	30
O	4
E	11
R1	--
R2	--
R3	--
T	4
LOAD	KG
WORKING LIMIT	150
BREAKING	750

MATERIAL

AISI 304 STAINLESS STEEL STANDARD

CLOSING APPLIED BY MANUAL & ENTIRE SCREWING OF THE NUT TO GUARANTEE THE HIGHEST SAFETY (NO THREAD SHOULD BE OBVIOUS).

SYSTEMATIC CONTROL OF MAILLON QUICK-LINKS BEFORE EVERY FLIGHT.

THREAD TECHNICAL DATA

NAME	SERAFIL
N° OF REFERENCE	40
MATERIAL	POLYESTER
TYPE OF FINISH	SILK
LINEAR DENSITY	NM 41 / 3 (DTEX 244 * 3)
BREAKING STRENGTH	4.500 CN
ELONGATION	17,00%

NAME	SERAFIL
N° OF REFERENCE	60
MATERIAL	POLYESTER
TYPE OF FINISH	SILK
LINEAR DENSITY	NM 61 / 3 (DTEX 163 * 3)
BREAKING STRENGTH	3.000 CN
ELONGATION	17,00%

PROPRIETIES SERAFIL

SOLIDITY ARTIFICIAL LIGHT	ISO 105 B02	> 5 - 6
SOLIDITY SWEAT	ISO 105 E04	> 4
SOLIDITY WASHING	ISO 105 C04	> 3
SOLIDITY GRAZE IN DRY	ISO 105 X12	> 4
SOLIDITY WASHING IN DRY	ISO 105 D01	> 3 - 4

TREATMENT WATER REPELLENT	WR
---------------------------	----

NAME	BONDED NYLON
N° OF REFERENCE	N/F-66
MATERIAL	NYLON
TYPE OF FINISH	SILK
LINEAR DENSITY	210D / 6
BREAKING STRENGTH	9,7 KG
ELONGATION	25/30%

RISERS TECHNICAL DATA**RISERS**

N° OF REFERENCE	G-R 22
MATERIAL	POLYESTER
WIDTH	22 M/M
THICKNESS	1,52 M/M
BREAKING STRENGTH	1.100 DAN
ELONGATION	MAX. 15%
WEIGHT	25 G/M
COLOR	BLACK

COLOR INDICATOR

N° OF REFERENCE	IC-G 1-2
MATERIAL	POLYESTER
WIDTH	70 M/M
THICKNESS	0,80 M/M
BREAKING STRENGTH	130 DN
ELONGATION	35%
WEIGHT	32 G/M

LOOPS

N° OF REFERENCE	LKI - 13
MATERIAL	NYLON
WIDTH	13 M/M
BREAKING STRENGTH	110 KG
ELONGATION	25/35%
WEIGHT	7,2 G/M
COLOR	WHITE

N° OF REFERENCE	LKI - 10
MATERIAL	NYLON
WIDTH	10 M/M
BREAKING STRENGTH	84 KG
ELONGATION	25/35%
WEIGHT	3 G/M
COLOR	WHITE

nIVIUK

niviuk.com

The importance of small details