

ESPECIFICACIONES TECNICAS LINK

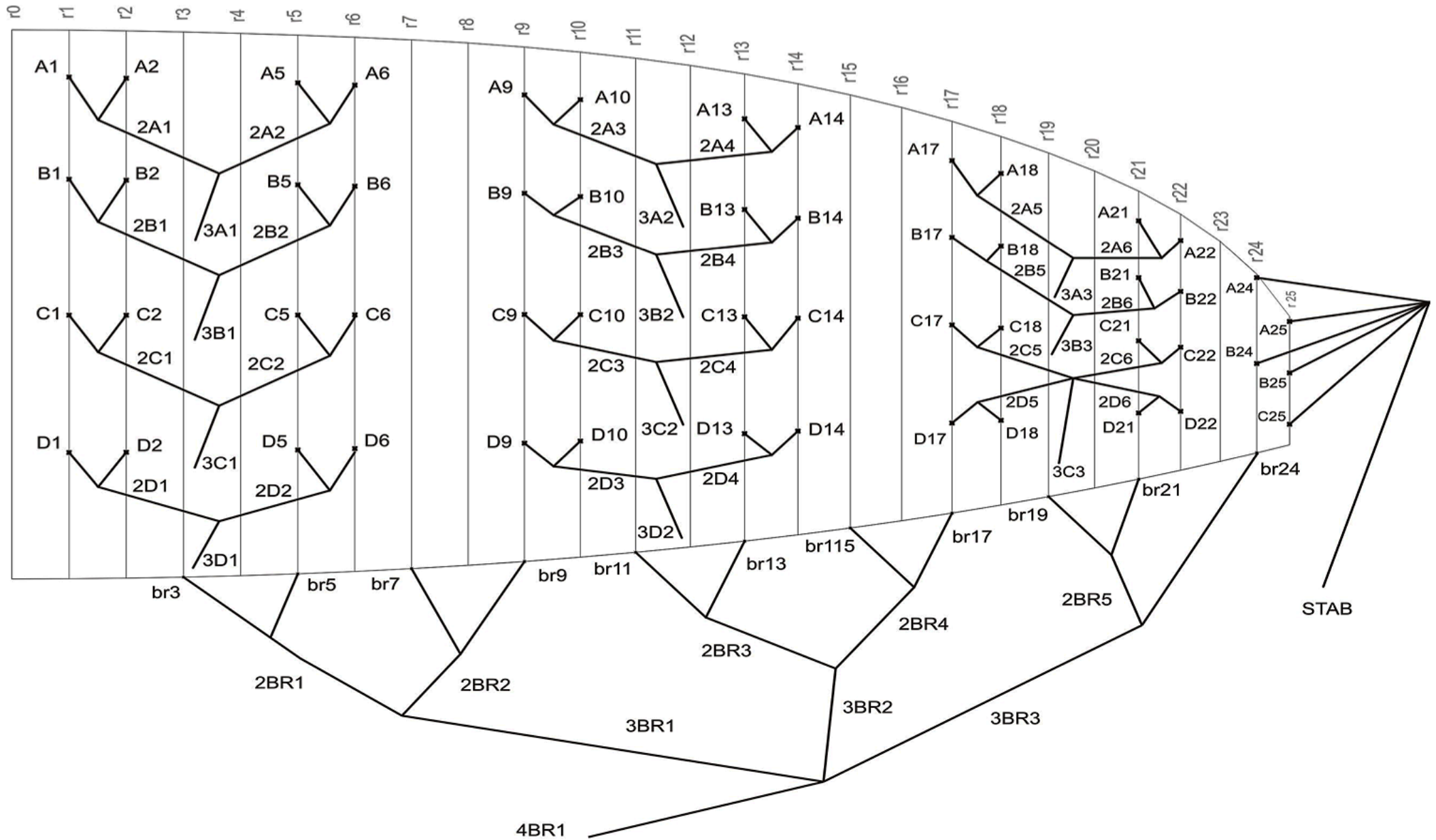


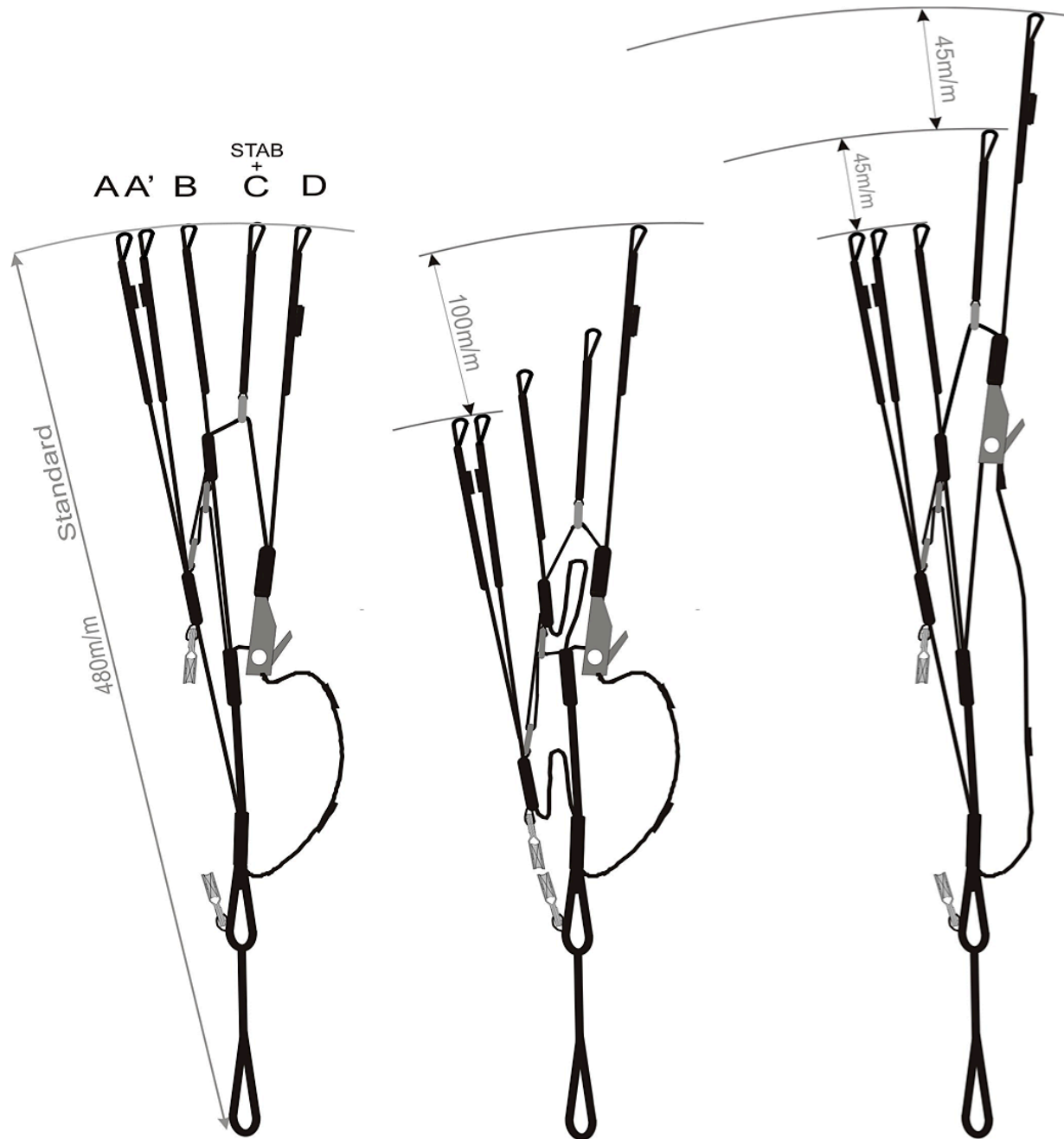
DATOS TÉCNICOS

| LINK | | 23 | 25 | 27 | 29 | |
|--------------|----------------|--------|---------|---------|---------|---------|
| ALVÉOLOS | NÚMERO | 50 | 50 | 50 | 50 | |
| | CERRADOS | 6 | 6 | 6 | 6 | |
| | CAJONES | 27 | 27 | 27 | 27 | |
| EN PLANTA | ÁREA | M2 | 23 | 25 | 27 | 29,5 |
| | ENVERGADURA | M | 11,04 | 11,51 | 11,96 | 12,5 |
| | ALARGAMIENTO | | 5,3 | 5,3 | 5,3 | 5,3 |
| PROYECTADO | ÁREA | M2 | 19,55 | 21,23 | 22,9 | 24,99 |
| | ENVERGADURA | | 8,65 | 9,29 | 9,32 | 9,76 |
| | ALARGAMIENTO | | 3,82 | 3,82 | 3,82 | 3,82 |
| BÓVEDA | | % | 15 | 15 | 15 | 15 |
| CUERDA | MÁXIMA | | 2,56 | 2,67 | 2,77 | 2,9 |
| | MÍNIMA | | 0,6 | 0,62 | 0,65 | 0,69 |
| | MEDIA | | 2,08 | 2,17 | 2,25 | 2,34 |
| SUSPENTES | METROS TOTALES | M | 276 | 294 | 306 | 317 |
| | ALTURA | M | 6,87 | 7,11 | 7,41 | 7,72 |
| | NÚMERO | | 218 | 218 | 218 | 218 |
| | PRINCIPALES | | 3/3/4/2 | 3/3/4/2 | 3/3/4/2 | 3/3/4/2 |
| ELEVADORES | BANDAS | 4 | A/B/C/D | A/B/C/D | A/B/C/D | A/B/C/D |
| | TRIMS | m/m | 90 | 90 | 90 | 90 |
| | ACELERADOR | m/m | 100 | 100 | 100 | 100 |
| CARGA TOTAL | MÍNIMA | KG | 65 | 80 | 95 | 110 |
| EN VUELO | MÁXIMA | KG | 120 | 140 | 160 | 180 |
| PESO DEL ALA | | KG | 5,2 | 5,5 | 5,8 | 6,1 |
| HOMOLOGACIÓN | | EN/LTF | B | B | B | B |

DATOS TÉCNICOS MATERIALES

| VELA | REFERENCIA | FABRICANTE |
|------------------------|--------------------|--------------------------|
| EXTRADÓS | SKYTEX 40 9017 E77 | PORCHER IND (FRANCE) |
| INTRADÓS | N 20D MF | DOMINICO TEX CO |
| PERFILES | 30D FM | DOMINICO TEX CO |
| DIAGONALES | 30D FM | DOMINICO TEX CO |
| CINTA DE CARGA | LKI - 10 | KOLON IND. (KOREA) |
| REFUERZOS CARGA PERFIL | W-420 | D-P (GERMANY) |
| RIBETE | MYLAR | D-P (GERMANY) |
| REFUERZOS PERFIL | W-420 | D-P (GERMANY) |
| HILO | SERAFIL 60 | AMAN (GERMANY) |
| SUSPENTES | REFERENCIA | FABRICANTE |
| CONO ALTO | TNL - 080 | EDELRID (GERMANY) |
| CONO MEDIO | TNL - 080 | TEIJIM LIMITED (JAPAN) |
| CONO MEDIO | TNL - 140 | TEIJIM LIMITED (JAPAN) |
| PRINCIPAL | TNL - 280 | TEIJIM LIMITED (JAPAN) |
| PRINCIPAL | TNL - 220 | TEIJIM LIMITED (JAPAN) |
| PRINCIPAL | TNL - 140 | TEIJIM LIMITED (JAPAN) |
| PRINCIPAL FRENO | TNL - 400 | TEIJIM LIMITED (JAPAN) |
| HILO | SERAFIL 60 | AMAN (GERMANY) |
| ELEVADORES | REFERENCIA | FABRICANTE |
| BANDAS | G-R 22 | TECNI SANGLES (FRANCE) |
| INDICADOR DE COLOR | PAD | TECNI SANGLES (FRANCE) |
| HILO | V138 | COATS (ENGLAND) |
| MAILLONES | MRI4 | ANSUNG PRECISION (KOREA) |
| POLEAS | 224 | HARKEN (USA) |





DATOS TÉCNICOS COLORES

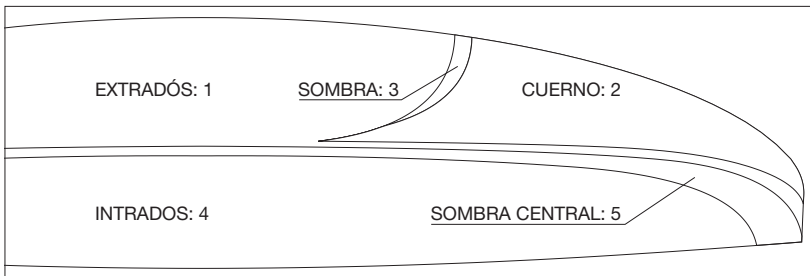
| | | | | |
|----------|---|------------|----------------|----------|
| SAPPHIRE | 1 | ROYAL BLUE | MAIN TOP | REF: 317 |
| | 2 | LIMA | HORNS | REF: 500 |
| | 3 | BLACK | SHADOW | REF: 102 |
| | 4 | ROYAL BLUE | MAIN BOTTOM | REF: 317 |
| | 5 | BLACK | LEADING SHADOW | REF: 102 |



| | | | | |
|---------|---|--------|----------------|----------|
| MONARCA | 1 | ORANGE | MAIN TOP | REF: 744 |
| | 2 | GOLD | HORNS | REF: 939 |
| | 3 | BLACK | SHADOW | REF: 102 |
| | 4 | ORANGE | MAIN BOTTOM | REF: 744 |
| | 5 | BLACK | LEADING SHADOW | REF: 102 |



| | | | | |
|------|---|------------|----------------|----------|
| KAKI | 1 | LIMA | MAIN TOP | REF: 500 |
| | 2 | DRAGON RED | HORNS | REF: 636 |
| | 3 | BLACK | SHADOW | REF: 102 |
| | 4 | LIMA | MAIN BOTTOM | REF: 500 |
| | 5 | BLACK | LEADING SHADOW | REF: 102 |



CARGA ALAR

| LINK | 23 | | 25 | | 27 | | 29 | | | | |
|------|--------|-------|--------|-------|--------|-------|--------|-------|-----|---|------|
| | P.T.V. | KG/M2 | P.T.V. | KG/M2 | P.T.V. | KG/M2 | P.T.V. | KG/M2 | | | |
| 65 | = | 2,83 | 80 | = | 3,20 | 95 | = | 3,52 | 110 | = | 3,73 |
| 66 | = | 2,87 | 81 | = | 3,24 | 96 | = | 3,56 | 111 | = | 3,76 |
| 67 | = | 2,91 | 82 | = | 3,28 | 97 | = | 3,59 | 112 | = | 3,80 |
| 68 | = | 2,96 | 83 | = | 3,32 | 98 | = | 3,63 | 113 | = | 3,83 |
| 69 | = | 3,00 | 84 | = | 3,36 | 99 | = | 3,67 | 114 | = | 3,86 |
| 70 | = | 3,04 | 85 | = | 3,40 | 100 | = | 3,70 | 115 | = | 3,90 |
| 71 | = | 3,09 | 86 | = | 3,44 | 101 | = | 3,74 | 116 | = | 3,93 |
| 72 | = | 3,13 | 87 | = | 3,48 | 102 | = | 3,78 | 117 | = | 3,97 |
| 73 | = | 3,17 | 88 | = | 3,52 | 103 | = | 3,81 | 118 | = | 4,00 |
| 74 | = | 3,22 | 89 | = | 3,56 | 104 | = | 3,85 | 119 | = | 4,03 |
| 75 | = | 3,26 | 90 | = | 3,60 | 105 | = | 3,89 | 120 | = | 4,07 |
| 76 | = | 3,30 | 91 | = | 3,64 | 106 | = | 3,93 | 121 | = | 4,10 |
| 77 | = | 3,35 | 92 | = | 3,68 | 107 | = | 3,96 | 122 | = | 4,14 |
| 78 | = | 3,39 | 93 | = | 3,72 | 108 | = | 4,00 | 123 | = | 4,17 |
| 79 | = | 3,43 | 94 | = | 3,76 | 109 | = | 4,04 | 124 | = | 4,20 |
| 80 | = | 3,48 | 95 | = | 3,80 | 110 | = | 4,07 | 125 | = | 4,24 |
| 81 | = | 3,52 | 96 | = | 3,84 | 111 | = | 4,11 | 126 | = | 4,27 |
| 82 | = | 3,57 | 97 | = | 3,88 | 112 | = | 4,15 | 127 | = | 4,31 |
| 83 | = | 3,61 | 98 | = | 3,92 | 113 | = | 4,19 | 128 | = | 4,34 |
| 84 | = | 3,65 | 99 | = | 3,96 | 114 | = | 4,22 | 129 | = | 4,37 |
| 85 | = | 3,70 | 100 | = | 4,00 | 115 | = | 4,26 | 130 | = | 4,41 |

DATOS TÉCNICOS SUSPENTES

| LINK | | 23 | | | | | | | | | | | | |
|------|---------------|------|------|--------------|------|------|--------------|------|------|--------------|------|-------|-------------|------|
| REF. | CODE | m/m | REF. | CODE | m/m | REF. | CODE | m/m | REF. | CODE | m/m | REF. | CODE | m/m |
| A | | | B | | | C | | | D | | | BRAKE | | |
| A1 | TNL-080-green | 335 | B1 | TNL-080-blue | 330 | C1 | TNL-080-blue | 335 | D1 | TNL-080-blue | 340 | br3 | TNL-080-red | 985 |
| A2 | TNL-080-green | 295 | B2 | TNL-080-blue | 295 | C2 | TNL-080-blue | 290 | D2 | TNL-080-blue | 290 | br5 | TNL-080-red | 790 |
| A5 | TNL-080-green | 305 | B5 | TNL-080-blue | 305 | C5 | TNL-080-blue | 300 | D5 | TNL-080-blue | 300 | br7 | TNL-080-red | 945 |
| A6 | TNL-080-green | 325 | B6 | TNL-080-blue | 325 | C6 | TNL-080-blue | 325 | D6 | TNL-080-blue | 335 | br9 | TNL-080-red | 905 |
| A9 | TNL-080-green | 325 | B9 | TNL-080-blue | 325 | C9 | TNL-080-blue | 325 | D9 | TNL-080-blue | 330 | br11 | TNL-080-red | 900 |
| A10 | TNL-080-green | 290 | B10 | TNL-080-blue | 290 | C10 | TNL-080-blue | 285 | D10 | TNL-080-blue | 285 | br13 | TNL-080-red | 820 |
| A13 | TNL-080-green | 290 | B13 | TNL-080-blue | 280 | C13 | TNL-080-blue | 280 | D13 | TNL-080-blue | 280 | br15 | TNL-080-red | 775 |
| A14 | TNL-080-green | 305 | B14 | TNL-080-blue | 305 | C14 | TNL-080-blue | 305 | D14 | TNL-080-blue | 310 | br17 | TNL-080-red | 830 |
| A14 | TNL-080-green | 330 | B17 | TNL-080-blue | 320 | C17 | TNL-080-blue | 315 | D17 | TNL-080-blue | 320 | br19 | TNL-080-red | 740 |
| A18 | TNL-080-green | 280 | B18 | TNL-080-blue | 270 | C18 | TNL-080-blue | 265 | D18 | TNL-080-blue | 270 | br21 | TNL-080-red | 670 |
| A21 | TNL-080-green | 300 | B21 | TNL-080-blue | 280 | C21 | TNL-080-blue | 270 | D21 | TNL-080-blue | 270 | br24 | TNL-080-red | 1345 |
| A22 | TNL-080-green | 275 | B22 | TNL-080-blue | 260 | C22 | TNL-080-blue | 240 | D22 | TNL-080-blue | 235 | | | |
| A24 | TNL-080-red | 2040 | B24 | TNL-080-red | 2010 | | | | | | | | | |
| A25 | TNL-080-red | 1925 | B25 | TNL-080-red | 1930 | C25 | TNL-080-red | 1965 | | | | | | |
| 2A1 | TNL-140-green | 2060 | 2B1 | TNL-140-blue | 2050 | 2C1 | TNL-140-blue | 1880 | 2D1 | TNL-080-blue | 1615 | 2BR1 | TNL-080-red | 1215 |
| 2A2 | TNL-140-green | 2015 | 2B2 | TNL-140-blue | 2005 | 2C2 | TNL-140-blue | 1840 | 2D2 | TNL-080-blue | 1575 | 2BR2 | TNL-080-red | 915 |
| 2A3 | TNL-140-green | 1975 | 2B3 | TNL-140-blue | 1950 | 2C3 | TNL-140-blue | 1780 | 2D3 | TNL-080-blue | 1535 | 2BR3 | TNL-080-red | 950 |
| 2A4 | TNL-140-green | 1950 | 2B4 | TNL-140-blue | 1940 | 2C4 | TNL-140-blue | 1770 | 2D4 | TNL-080-blue | 1510 | 2BR4 | TNL-080-red | 990 |
| 2A5 | TNL-140-green | 1685 | 2B5 | TNL-140-blue | 1605 | 2C5 | TNL-080-blue | 1655 | 2D5 | TNL-080-blue | 1715 | 2BR5 | TNL-080-red | 840 |
| 2A6 | TNL-140-green | 1500 | 2B6 | TNL-140-blue | 1445 | 2C6 | TNL-080-blue | 1490 | 2D6 | TNL-080-blue | 1540 | | | |
| 3A1 | TNL-280-green | 4010 | 3B1 | TNL-280-blue | 3945 | 3C1 | TNL-280-blue | 4130 | 3D1 | TNL-220-blue | 4500 | 3br1 | TNL-080-red | 2695 |
| 3A2 | TNL-220-green | 4000 | 3B2 | TNL-220-blue | 3960 | 3C2 | TNL-220-blue | 4140 | 3D2 | TNL-220-blue | 4485 | 3br2 | TNL-080-red | 2550 |
| 3A3 | TNL-220-green | 4090 | 3B3 | TNL-220-blue | 4145 | 3C3 | TNL-140-blue | 4120 | | | | 3br3 | TNL-080-red | 2655 |
| | | | | | | STAB | TNL-080-red | 3565 | | | | 4br1 | TNL-280-red | 2295 |

Point a: 2095

DATOS TÉCNICOS SUSPENTES

| LINK | | | 25 | | | | | | | | | | | |
|------|---------------|------|------|--------------|------|------|--------------|------|------|--------------|------|-------|-------------|------|
| REF. | CODE | m/m | REF. | CODE | m/m | REF. | CODE | m/m | REF. | CODE | m/m | REF. | CODE | m/m |
| A | | | B | | | C | | | D | | | BRAKE | | |
| A1 | TNL-080-green | 350 | B1 | TNL-080-blue | 345 | C1 | TNL-080-blue | 350 | D1 | TNL-080-blue | 355 | br3 | TNL-080-red | 1025 |
| A2 | TNL-080-green | 305 | B2 | TNL-080-blue | 305 | C2 | TNL-080-blue | 305 | D2 | TNL-080-blue | 300 | br5 | TNL-080-red | 825 |
| A5 | TNL-080-green | 320 | B5 | TNL-080-blue | 315 | C5 | TNL-080-blue | 315 | D5 | TNL-080-blue | 315 | br7 | TNL-080-red | 985 |
| A6 | TNL-080-green | 340 | B6 | TNL-080-blue | 340 | C6 | TNL-080-blue | 340 | D6 | TNL-080-blue | 345 | br9 | TNL-080-red | 945 |
| A9 | TNL-080-green | 340 | B9 | TNL-080-blue | 335 | C9 | TNL-080-blue | 340 | D9 | TNL-080-blue | 345 | br11 | TNL-080-red | 935 |
| A10 | TNL-080-green | 305 | B10 | TNL-080-blue | 300 | C10 | TNL-080-blue | 300 | D10 | TNL-080-blue | 295 | br13 | TNL-080-red | 855 |
| A13 | TNL-080-green | 300 | B13 | TNL-080-blue | 295 | C13 | TNL-080-blue | 290 | D13 | TNL-080-blue | 290 | br15 | TNL-080-red | 805 |
| A14 | TNL-080-green | 320 | B14 | TNL-080-blue | 315 | C14 | TNL-080-blue | 315 | D14 | TNL-080-blue | 325 | br17 | TNL-080-red | 865 |
| A14 | TNL-080-green | 345 | B17 | TNL-080-blue | 330 | C17 | TNL-080-blue | 330 | D17 | TNL-080-blue | 330 | br19 | TNL-080-red | 770 |
| A18 | TNL-080-green | 290 | B18 | TNL-080-blue | 285 | C18 | TNL-080-blue | 280 | D18 | TNL-080-blue | 280 | br21 | TNL-080-red | 700 |
| A21 | TNL-080-green | 315 | B21 | TNL-080-blue | 295 | C21 | TNL-080-blue | 280 | D21 | TNL-080-blue | 280 | br24 | TNL-080-red | 1405 |
| A22 | TNL-080-green | 290 | B22 | TNL-080-blue | 270 | C22 | TNL-080-blue | 250 | D22 | TNL-080-blue | 245 | | | |
| A24 | TNL-080-red | 2125 | B24 | TNL-080-red | 2095 | | | | | | | | | |
| A25 | TNL-080-red | 2005 | B25 | TNL-080-red | 2015 | C25 | TNL-080-red | 2050 | | | | | | |
| 2A1 | TNL-140-green | 2150 | 2B1 | TNL-140-blue | 2135 | 2C1 | TNL-140-blue | 1960 | 2D1 | TNL-080-blue | 1685 | 2BR1 | TNL-080-red | 1270 |
| 2A2 | TNL-140-green | 2100 | 2B2 | TNL-140-blue | 2090 | 2C2 | TNL-140-blue | 1920 | 2D2 | TNL-080-blue | 1640 | 2BR2 | TNL-080-red | 955 |
| 2A3 | TNL-140-green | 2060 | 2B3 | TNL-140-blue | 2035 | 2C3 | TNL-140-blue | 1860 | 2D3 | TNL-080-blue | 1600 | 2BR3 | TNL-080-red | 990 |
| 2A4 | TNL-140-green | 2030 | 2B4 | TNL-140-blue | 2020 | 2C4 | TNL-140-blue | 1845 | 2D4 | TNL-080-blue | 1575 | 2BR4 | TNL-080-red | 1030 |
| 2A5 | TNL-140-green | 1755 | 2B5 | TNL-140-blue | 1670 | 2C5 | TNL-080-blue | 1725 | 2D5 | TNL-080-blue | 1790 | 2BR5 | TNL-080-red | 875 |
| 2A6 | TNL-140-green | 1560 | 2B6 | TNL-140-blue | 1505 | 2C6 | TNL-080-blue | 1555 | 2D6 | TNL-080-blue | 1605 | | | |
| 3A1 | TNL-280-green | 4180 | 3B1 | TNL-280-blue | 4115 | 3C1 | TNL-280-blue | 4305 | 3D1 | TNL-220-blue | 4695 | 3br1 | TNL-080-red | 2810 |
| 3A2 | TNL-220-green | 4170 | 3B2 | TNL-220-blue | 4125 | 3C2 | TNL-220-blue | 4320 | 3D2 | TNL-220-blue | 4675 | 3br2 | TNL-080-red | 2660 |
| 3A3 | TNL-220-green | 4257 | 3B3 | TNL-220-blue | 4320 | 3C3 | TNL-140-blue | 4295 | | | | 3br3 | TNL-080-red | 2765 |
| | | | | | | STAB | TNL-080-red | 3695 | | | | 4br1 | TNL-280-red | 2385 |

Point a: 2185

DATOS TÉCNICOS SUSPENTES

| LINK | | | 27 | | | | | | | | | | | |
|------|---------------|------|------|--------------|------|------|--------------|------|------|--------------|------|-------|-------------|------|
| REF. | CODE | m/m | REF. | CODE | m/m | REF. | CODE | m/m | REF. | CODE | m/m | REF. | CODE | m/m |
| A | | | B | | | C | | | D | | | BRAKE | | |
| A1 | TNL-080-green | 360 | B1 | TNL-080-blue | 360 | C1 | TNL-080-blue | 360 | D1 | TNL-080-blue | 370 | br3 | TNL-080-red | 1065 |
| A2 | TNL-080-green | 320 | B2 | TNL-080-blue | 320 | C2 | TNL-080-blue | 315 | D2 | TNL-080-blue | 315 | br5 | TNL-080-red | 855 |
| A5 | TNL-080-green | 330 | B5 | TNL-080-blue | 330 | C5 | TNL-080-blue | 325 | D5 | TNL-080-blue | 325 | br7 | TNL-080-red | 1025 |
| A6 | TNL-080-green | 355 | B6 | TNL-080-blue | 350 | C6 | TNL-080-blue | 355 | D6 | TNL-080-blue | 360 | br9 | TNL-080-red | 980 |
| A9 | TNL-080-green | 355 | B9 | TNL-080-blue | 350 | C9 | TNL-080-blue | 355 | D9 | TNL-080-blue | 360 | br11 | TNL-080-red | 975 |
| A10 | TNL-080-green | 315 | B10 | TNL-080-blue | 315 | C10 | TNL-080-blue | 310 | D10 | TNL-080-blue | 305 | br13 | TNL-080-red | 890 |
| A13 | TNL-080-green | 310 | B13 | TNL-080-blue | 305 | C13 | TNL-080-blue | 300 | D13 | TNL-080-blue | 300 | br15 | TNL-080-red | 840 |
| A14 | TNL-080-green | 335 | B14 | TNL-080-blue | 330 | C14 | TNL-080-blue | 330 | D14 | TNL-080-blue | 335 | br17 | TNL-080-red | 900 |
| A14 | TNL-080-green | 355 | B17 | TNL-080-blue | 345 | C17 | TNL-080-blue | 340 | D17 | TNL-080-blue | 345 | br19 | TNL-080-red | 800 |
| A18 | TNL-080-green | 300 | B18 | TNL-080-blue | 295 | C18 | TNL-080-blue | 290 | D18 | TNL-080-blue | 290 | br21 | TNL-080-red | 725 |
| A21 | TNL-080-green | 325 | B21 | TNL-080-blue | 305 | C21 | TNL-080-blue | 295 | D21 | TNL-080-blue | 295 | br24 | TNL-080-red | 1460 |
| A22 | TNL-080-green | 300 | B22 | TNL-080-blue | 280 | C22 | TNL-080-blue | 260 | D22 | TNL-080-blue | 255 | | | |
| A24 | TNL-080-red | 2195 | B24 | TNL-080-red | 2175 | | | | | | | | | |
| A25 | TNL-080-red | 2085 | B25 | TNL-080-red | 2095 | C25 | TNL-080-red | 2135 | | | | | | |
| 2A1 | TNL-140-green | 2235 | 2B1 | TNL-140-blue | 2220 | 2C1 | TNL-140-blue | 2040 | 2D1 | TNL-080-blue | 1750 | 2BR1 | TNL-080-red | 1320 |
| 2A2 | TNL-140-green | 2180 | 2B2 | TNL-140-blue | 2175 | 2C2 | TNL-140-blue | 1995 | 2D2 | TNL-080-blue | 1705 | 2BR2 | TNL-080-red | 990 |
| 2A3 | TNL-140-green | 2140 | 2B3 | TNL-140-blue | 2115 | 2C3 | TNL-140-blue | 1930 | 2D3 | TNL-080-blue | 1660 | 2BR3 | TNL-080-red | 1025 |
| 2A4 | TNL-140-green | 2110 | 2B4 | TNL-140-blue | 2100 | 2C4 | TNL-140-blue | 1920 | 2D4 | TNL-080-blue | 1635 | 2BR4 | TNL-080-red | 1070 |
| 2A5 | TNL-140-green | 1825 | 2B5 | TNL-140-blue | 1735 | 2C5 | TNL-080-blue | 1790 | 2D5 | TNL-080-blue | 1860 | 2BR5 | TNL-080-red | 910 |
| 2A6 | TNL-140-green | 1625 | 2B6 | TNL-140-blue | 1565 | 2C6 | TNL-080-blue | 1615 | 2D6 | TNL-080-blue | 1670 | | | |
| 3A1 | TNL-280-green | 4345 | 3B1 | TNL-280-blue | 4275 | 3C1 | TNL-280-blue | 4475 | 3D1 | TNL-220-blue | 4880 | 3br1 | TNL-080-red | 2915 |
| 3A2 | TNL-220-green | 4335 | 3B2 | TNL-220-blue | 4290 | 3C2 | TNL-220-blue | 4490 | 3D2 | TNL-220-blue | 4860 | 3br2 | TNL-080-red | 2760 |
| 3A3 | TNL-220-green | 4425 | 3B3 | TNL-220-blue | 4490 | 3C3 | TNL-140-blue | 4465 | | | | 3br3 | TNL-080-red | 2880 |
| | | | | | | STAB | TNL-080-red | 3865 | | | | 4br1 | TNL-280-red | 2475 |

Point a: 2275

DATOS TÉCNICOS SUSPENTES

| LINK | | | 29 | | | | | | | | | | | |
|------|---------------|------|------|--------------|------|------|--------------|------|------|--------------|------|-------|-------------|------|
| REF. | CODE | m/m | REF. | CODE | m/m | REF. | CODE | m/m | REF. | CODE | m/m | REF. | CODE | m/m |
| A | | | B | | | C | | | D | | | BRAKE | | |
| A1 | TNL-080-green | 380 | B1 | TNL-080-blue | 375 | C1 | TNL-080-blue | 380 | D1 | TNL-080-blue | 385 | br3 | TNL-080-red | 1115 |
| A2 | TNL-080-green | 335 | B2 | TNL-080-blue | 330 | C2 | TNL-080-blue | 330 | D2 | TNL-080-blue | 325 | br5 | TNL-080-red | 895 |
| A5 | TNL-080-green | 345 | B5 | TNL-080-blue | 345 | C5 | TNL-080-blue | 340 | D5 | TNL-080-blue | 340 | br7 | TNL-080-red | 1070 |
| A6 | TNL-080-green | 370 | B6 | TNL-080-blue | 365 | C6 | TNL-080-blue | 370 | D6 | TNL-080-blue | 375 | br9 | TNL-080-red | 1025 |
| A9 | TNL-080-green | 370 | B9 | TNL-080-blue | 365 | C9 | TNL-080-blue | 370 | D9 | TNL-080-blue | 375 | br11 | TNL-080-red | 1020 |
| A10 | TNL-080-green | 330 | B10 | TNL-080-blue | 330 | C10 | TNL-080-blue | 325 | D10 | TNL-080-blue | 320 | br13 | TNL-080-red | 930 |
| A13 | TNL-080-green | 325 | B13 | TNL-080-blue | 320 | C13 | TNL-080-blue | 315 | D13 | TNL-080-blue | 315 | br15 | TNL-080-red | 875 |
| A14 | TNL-080-green | 350 | B14 | TNL-080-blue | 345 | C14 | TNL-080-blue | 345 | D14 | TNL-080-blue | 350 | br17 | TNL-080-red | 940 |
| A14 | TNL-080-green | 375 | B17 | TNL-080-blue | 360 | C17 | TNL-080-blue | 355 | D17 | TNL-080-blue | 360 | br19 | TNL-080-red | 840 |
| A18 | TNL-080-green | 315 | B18 | TNL-080-blue | 305 | C18 | TNL-080-blue | 305 | D18 | TNL-080-blue | 305 | br21 | TNL-080-red | 760 |
| A21 | TNL-080-green | 340 | B21 | TNL-080-blue | 320 | C21 | TNL-080-blue | 305 | D21 | TNL-080-blue | 305 | br24 | TNL-080-red | 1525 |
| A22 | TNL-080-green | 315 | B22 | TNL-080-blue | 290 | C22 | TNL-080-blue | 270 | D22 | TNL-080-blue | 265 | | | |
| A24 | TNL-080-red | 2310 | B24 | TNL-080-red | 2275 | | | | | | | | | |
| A25 | TNL-080-red | 2180 | B25 | TNL-080-red | 2190 | C25 | TNL-080-red | 2235 | | | | | | |
| 2A1 | TNL-140-green | 2335 | 2B1 | TNL-140-blue | 2320 | 2C1 | TNL-140-blue | 2130 | 2D1 | TNL-080-blue | 1830 | 2BR1 | TNL-080-red | 1380 |
| 2A2 | TNL-140-green | 2280 | 2B2 | TNL-140-blue | 2275 | 2C2 | TNL-140-blue | 2085 | 2D2 | TNL-080-blue | 1780 | 2BR2 | TNL-080-red | 1035 |
| 2A3 | TNL-140-green | 2235 | 2B3 | TNL-140-blue | 2210 | 2C3 | TNL-140-blue | 2020 | 2D3 | TNL-080-blue | 1735 | 2BR3 | TNL-080-red | 1075 |
| 2A4 | TNL-140-green | 2205 | 2B4 | TNL-140-blue | 2195 | 2C4 | TNL-140-blue | 2005 | 2D4 | TNL-080-blue | 1710 | 2BR4 | TNL-080-red | 1120 |
| 2A5 | TNL-140-green | 1905 | 2B5 | TNL-140-blue | 1815 | 2C5 | TNL-080-blue | 1870 | 2D5 | TNL-080-blue | 1940 | 2BR5 | TNL-080-red | 955 |
| 2A6 | TNL-140-green | 1695 | 2B6 | TNL-140-blue | 1635 | 2C6 | TNL-080-blue | 1690 | 2D6 | TNL-080-blue | 1745 | | | |
| 3A1 | TNL-280-green | 4540 | 3B1 | TNL-280-blue | 4470 | 3C1 | TNL-280-blue | 4680 | 3D1 | TNL-220-blue | 5100 | 3br1 | TNL-080-red | 3045 |
| 3A2 | TNL-220-green | 4530 | 3B2 | TNL-220-blue | 4480 | 3C2 | TNL-220-blue | 4690 | 3D2 | TNL-220-blue | 5080 | 3br2 | TNL-080-red | 2885 |
| 3A3 | TNL-220-green | 4635 | 3B3 | TNL-220-blue | 4695 | 3C3 | TNL-140-blue | 4665 | | | | 3br3 | TNL-080-red | 3005 |
| | | | | | | STAB | TNL-080-red | 4035 | | | | 4br1 | TNL-280-red | 2575 |

Point a: 2375

NIVIUK LINK 23

| LONGITUD LÍNEAS m/m | | | | | |
|---------------------|------|------|------|------|------|
| | A | B | C | D | br |
| 1 | 6380 | 6300 | 6320 | 6430 | 7000 |
| 2 | 6340 | 6265 | 6275 | 6380 | 6805 |
| 3 | 6305 | 6230 | 6245 | 6350 | 6660 |
| 4 | 6325 | 6250 | 6270 | 6385 | 6620 |
| 5 | 6275 | 6210 | 6220 | 6325 | 6505 |
| 6 | 6240 | 6175 | 6180 | 6280 | 6425 |
| 7 | 6215 | 6155 | 6165 | 6250 | 6420 |
| 8 | 6230 | 6180 | 6190 | 6280 | 6475 |
| 9 | 6080 | 6045 | 6070 | 6135 | 6340 |
| 10 | 6030 | 5995 | 6020 | 6085 | 6270 |
| 11 | 5865 | 5845 | 5860 | 5910 | 6105 |
| 12 | 5840 | 5825 | 5830 | 5875 | |
| 13 | 5595 | 5565 | | | |
| 14 | 5480 | 5485 | 5520 | | |
| 15 | | | | | |

| LONGITUD BANDAS m/m | | | | | |
|---------------------|-----|-----|-----|-----|----------------|
| | A | B | C | D | |
| | 480 | 480 | 480 | 480 | STANDARD |
| | 480 | 480 | 525 | 570 | TRIMS ABIERTOS |
| | 380 | 410 | 440 | 480 | ACELERADO |

NIVIUK LINK 25

| LONGITUD LÍNEAS m/m | | | | | |
|---------------------|------|------|------|------|------|
| | A | B | C | D | br |
| 1 | 6655 | 6570 | 6590 | 6710 | 7270 |
| 2 | 6610 | 6530 | 6545 | 6655 | 7070 |
| 3 | 6575 | 6495 | 6515 | 6625 | 6915 |
| 4 | 6595 | 6520 | 6540 | 6655 | 6875 |
| 5 | 6545 | 6470 | 6495 | 6595 | 6750 |
| 6 | 6510 | 6435 | 6455 | 6545 | 6670 |
| 7 | 6475 | 6415 | 6430 | 6515 | 6660 |
| 8 | 6495 | 6435 | 6455 | 6550 | 6720 |
| 9 | 6332 | 6295 | 6325 | 6390 | 6575 |
| 10 | 6277 | 6250 | 6275 | 6340 | 6505 |
| 11 | 6102 | 6090 | 6100 | 6150 | 6335 |
| 12 | 6077 | 6065 | 6070 | 6115 | |
| 13 | 5800 | 5770 | | | |
| 14 | 5680 | 5690 | 5725 | | |
| 15 | | | | | |

| LONGITUD BANDAS m/m | | | | | |
|---------------------|-----|-----|-----|-----|----------------|
| | A | B | C | D | |
| | 480 | 480 | 480 | 480 | STANDARD |
| | 480 | 480 | 525 | 570 | TRIMS ABIERTOS |
| | 380 | 410 | 440 | 480 | ACELERADO |

NIVIUK LINK 27

| LONGITUD LÍNEAS m/m | | | | | |
|---------------------|------|------|------|------|------|
| | A | B | C | D | br |
| 1 | 6915 | 6830 | 6850 | 6975 | 7535 |
| 2 | 6875 | 6790 | 6805 | 6920 | 7325 |
| 3 | 6830 | 6755 | 6770 | 6885 | 7165 |
| 4 | 6855 | 6775 | 6800 | 6920 | 7120 |
| 5 | 6805 | 6730 | 6750 | 6855 | 6995 |
| 6 | 6765 | 6695 | 6705 | 6800 | 6910 |
| 7 | 6730 | 6670 | 6685 | 6770 | 6905 |
| 8 | 6755 | 6695 | 6715 | 6805 | 6965 |
| 9 | 6580 | 6545 | 6570 | 6645 | 6825 |
| 10 | 6525 | 6495 | 6520 | 6590 | 6750 |
| 11 | 6345 | 6330 | 6345 | 6400 | 6575 |
| 12 | 6320 | 6305 | 6310 | 6360 | |
| 13 | 6030 | 6010 | | | |
| 14 | 5920 | 5930 | 5970 | | |
| 15 | | | | | |

| LONGITUD BANDAS m/m | | | | | |
|---------------------|-----|-----|-----|-----|----------------|
| | A | B | C | D | |
| | 480 | 480 | 480 | 480 | STANDARD |
| | 480 | 480 | 525 | 570 | TRIMS ABIERTOS |
| | 380 | 410 | 440 | 480 | ACELERADO |

NIVIUK LINK 29

| LONGITUD LÍNEAS m/m | | | | | |
|---------------------|------|------|------|------|------|
| | A | B | C | D | br |
| 1 | 7245 | 7151 | 7182 | 7309 | 7900 |
| 2 | 7199 | 7106 | 7132 | 7249 | 7680 |
| 3 | 7153 | 7077 | 7097 | 7213 | 7510 |
| 4 | 7180 | 7099 | 7130 | 7249 | 7465 |
| 5 | 7127 | 7047 | 7072 | 7179 | 7340 |
| 6 | 7087 | 7014 | 7027 | 7123 | 7250 |
| 7 | 7053 | 6989 | 7000 | 7092 | 7240 |
| 8 | 7077 | 7014 | 7029 | 7128 | 7305 |
| 9 | 6899 | 6858 | 6877 | 6951 | 7160 |
| 10 | 6840 | 6801 | 6826 | 6897 | 7080 |
| 11 | 6654 | 6639 | 6646 | 6701 | 6890 |
| 12 | 6627 | 6609 | 6609 | 6656 | |
| 13 | 6334 | 6297 | | | |
| 14 | 6204 | 6213 | 6259 | | |
| 15 | | | | | |

| LONGITUD BANDAS m/m | | | | | |
|---------------------|-----|-----|-----|-----|----------------|
| | A | B | C | D | |
| | 480 | 480 | 480 | 480 | STANDARD |
| | 480 | 480 | 525 | 570 | TRIMS ABIERTOS |
| | 380 | 410 | 440 | 480 | ACELERADO |

DATOS TÉCNICOS SUSPENTAJE

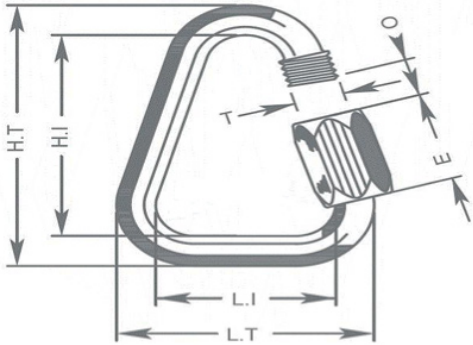
| | | | | | | |
|------------------------------------|--------------|-----------|-----------|-----------|-----------|-----------|
| CÓDIGO MATERIAL | | TNL | TNL | TNL | TNL | TNL |
| CÓDIGO CARGA | | 080 | 140 | 220 | 280 | 400 |
| CÓDIGO COLOR | | GREEN | GREEN | GREEN | GREEN | |
| | | BLUE | BLUE | BLUE | BLUE | |
| | | RED | | | | RED |
| DIÁMETRO EN M/M | Ø | 1,1 | 1,4 | 1,6 | 1,8 | 2,3 |
| MATERIAL DEL ALMA | | TECHNORA | TECHNORA | TECHNORA | TECHNORA | TECHNORA |
| MATERIAL DE LA FUNDA | | POLYESTER | POLYESTER | POLYESTER | POLYESTER | POLYESTER |
| PESO POR METRO G/M | TOTAL | 1,1 | 1,96 | 2,35 | 2,7 | 4 |
| CARGA DE RUPTURA | MIN | 80 | 140 | 220 | 280 | 460 |
| | MÁX | 92 | 160 | 250 | 320 | 470 |
| RESISTENCIA DESPUÉS | | | | | | |
| DE 5.000 CICLOS | TEST EN | 36,7 | 76,1 | 114,2 | 134,7 | 160,1 |
| DE TORSIÓN | | | | | | |
| ALARGAMIENTO CON | 5 daN en % | 0,3 | 0,2 | 0,2 | 0,2 | 0,05 |
| | 10 daN en % | 0,5 | 0,3 | 0,3 | 0,3 | 0,1 |
| | 15 daN en % | 0,7 | 0,5 | 0,5 | 0,4 | 0,2 |
| | 20 daN en % | 1 | 0,6 | 0,6 | 0,4 | 0,2 |
| | 25 daN en % | 1,3 | 0,8 | 0,7 | 0,5 | 0,3 |
| | 30 daN en % | 2,3 | 1,5 | 1,2 | 0,9 | 0,6 |
| | 75 daN en % | 2,8 | 2,3 | 1,8 | 1,3 | 0,8 |
| | 100 daN en % | | 2,7 | 2,2 | 1,7 | 1,1 |
| | 125 daN en % | | 3,2 | 2,7 | 2 | 1,4 |
| | 150 daN en % | | | 3 | 2,3 | 1,7 |
| | 175 daN en % | | | 3,3 | 2,7 | 2 |
| | 200 daN en % | | | 3,8 | 2,8 | 2,2 |
| ALARGAMIENTO CON CARGA MÁXIMA EN % | | 3 | 3,4 | 4 | 4,1 | 4,6 |

DATOS TÉCNICOS MAILLON

DESCRIPCIÓN

| | |
|----------|-----------------|
| MAILLON | DELTA |
| REF. | MRI4 |
| MATERIAL | STAINLESS STEEL |
| DIÁMETRO | 4,3 m/m |
| PESO | 12 G/PIECE |

ESPECIFICACIONES TÉCNICAS



| DIMENSIONES | m/m |
|-------------|-----|
| L.T. | 28 |
| L.I. | 20 |
| H.T. | 38 |
| H.I. | 30 |
| O | 4 |
| E | 11 |
| T | 4 |
| CARGA | KG |
| TRABAJO | 150 |
| ROTURA | 750 |

MATERIAL

AISI 304 ACERO INOXIDABLE ESTÁNDAR

CIERRE TOTAL MANUAL HASTA EL TOPE PARA GARANTIZAR LA MÁXIMA SEGURIDAD

CONTROL SISTEMÁTICO DE LOS CIERRES RÁPIDOS DEL MAILLON ANTES DE CADA VUELO

DATOS TÉCNICOS HILO

VELA

| | |
|---------------------------|--------------------------|
| NOMBRE | SERAFIL |
| Nº DE REFERENCIA | 60 |
| MATERIAL | POLYESTER |
| ACABADO | SILK |
| DENSIDAD LINEAL | NM 61 / 3 (DTEX 163 * 3) |
| RESISTENCIA A LA TRACCIÓN | 3,000 CN |
| ELONGACIÓN | 17,00% |

PROPIEDADES SERAFIL

| | | |
|--------------------------------|-------------|---------|
| SOLIDEZ A LA LUZ ARTIFICIAL | ISO 105 B02 | > 5 - 6 |
| SOLIDEZ AL SUDOR | ISO 105 E04 | > 4 |
| SOLIDEZ AL LAVADO | ISO 105 C04 | > 3 |
| SOLIDEZ AL FROTAMIENTO EN SECO | ISO 105 X12 | > 4 |
| SOLIDEZ AL LAVADO EN SECO | ISO 105 D01 | > 3 - 4 |

| | |
|-----------------------------------|----|
| TRATAMIENTO DE REPELENCIA AL AGUA | WR |
|-----------------------------------|----|

BANDAS

| | |
|---------------------------|---------------------|
| NOMBRE | COATS BONDED C.F.P. |
| Nº DE REFERENCIA | V138 |
| MATERIAL | POLYESTER |
| ACABADO | SILK |
| RESISTENCIA A LA TRACCIÓN | 9,5 KG |
| ELONGACIÓN | 19% |

DATOS TÉCNICOS BANDAS

BANDAS

| | |
|---------------------------|------------|
| REFERENCIA | G-R 22 |
| MATERIAL | POLYESTER |
| ANCHO | 22 M/M |
| GRUESO | 1,52 M/M |
| RESISTENCIA A LA TRACCIÓN | 1,100 DAN |
| ALARGAMIENTO | MAX. 15% |
| PESO | 25 G* L.M. |
| COLOR | BLACK |

INDICADOR COLOR

| | |
|---------------------------|-------------|
| REFERENCIA | IC-G 1-2 |
| MATERIAL | POLYESTER |
| ANCHO | 70 M/M |
| GRUESO | 0,80 M/M |
| RESISTENCIA A LA TRACCIÓN | 130 DN |
| ALARGAMIENTO | 35 % |
| PESO | 32 G * L.M. |
| COLOR | GREEN |

CINTAS DE CARGA

| | |
|---------------------------|----------|
| REFERENCIA | LKI - 10 |
| MATERIAL | NYLON |
| ANCHO | 10 M/M |
| RESISTENCIA A LA TRACCIÓN | 84 KG |
| ALARGAMIENTO | 30 % |
| PESO | 5,5 G/M |
| COLOR | WHITE |

