

N-GRAVITY 6

Technical *specifications*



IVIUK BEYOND
THE GLIDE

TECHNICAL SPECIFICATIONS

			16	17	18	19
Cells	Number		49	49	49	49
Aspect ratio	Flat		5,5	5,5	5,5	5,5
	Projected		4,34	4,34	4,34	4,34
Area	Flat	m2	16	17	18	19,5
	Projected	m2	13,69	14,55	15,42	16,7
Span	Flat	m	9,47	9,76	10	10,32
Chord	Max	m	2,08	2,14	2,21	2,29
Lines	Total	m	314	324	335	349
	Main		3/3/4/3	3/3/4/3	3/3/4/3	3/3/4/3
Risers	Number	4	A/B/C/D	A/B/C/D	A/B/C/D	A/B/C/D
	Speed-bar	mm	150	150	150	150
	Trimmers	mm	No	No	No	No
Glider weight		kg	4,93	5,15	5,35	5,66
Total weight in flight	Min-Max	kg	60-90	70-100	80-110	95-120
Certification			EN 926-1	EN 926-1	EN 926-1	EN 926-1

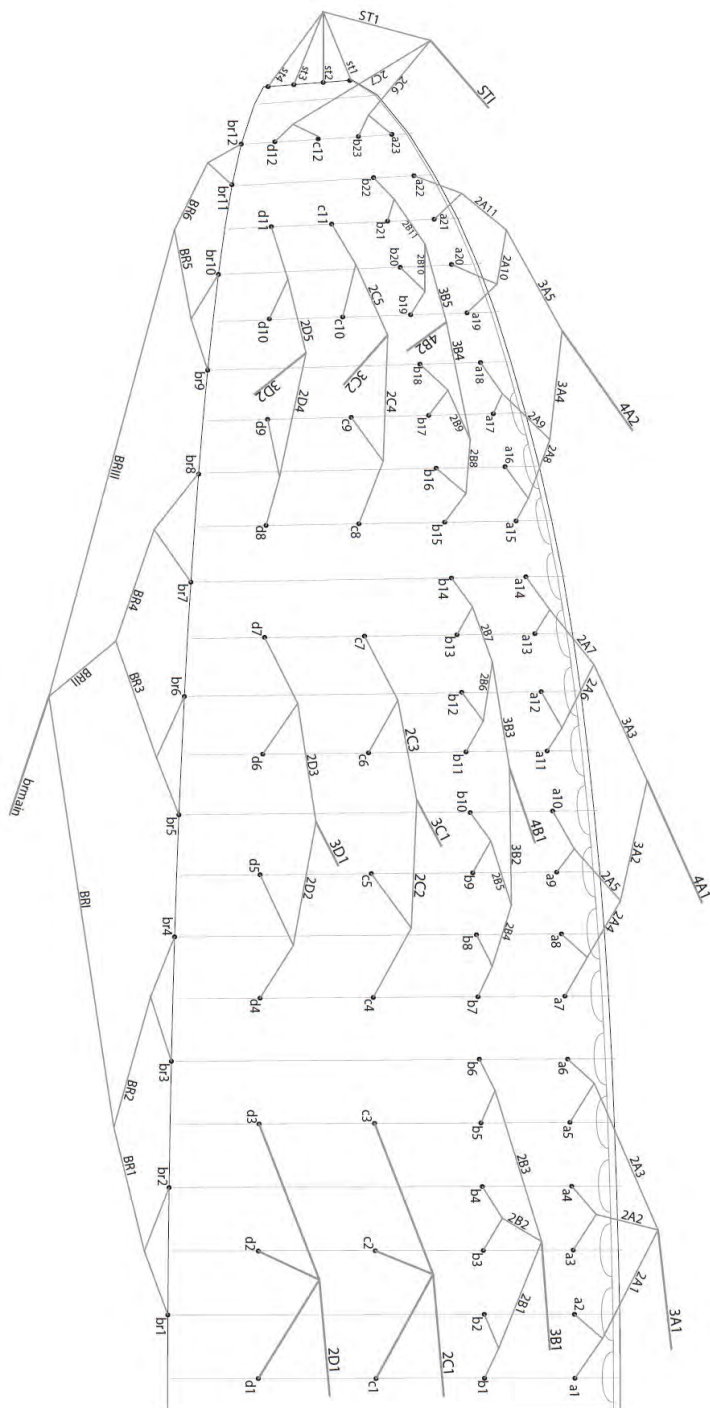
The total weight of the wing may differ ±2% due to variations in the weight of the fabric supplied by the manufacturers.

MATERIALS

CANOPY	FABRIC CODE	SUPPLIER
UPPER SURFACE	N20 DMF	DOMINICO TEX CO (KOREA)
BOTTOM SURFACE	N20 DMF	DOMINICO TEX CO (KOREA)
RIBS	30DFM	DOMINICO TEX CO (KOREA)
DIAGONALS	30DFM	DOMINICO TEX CO (KOREA)
LOOPS	LKI - 10	KOLON IND. (KOREA)
REINFORCEMENT LOOPS	W-420	D-P (GERMANY)
TRAILING EDGE REINFORCEMENT	MYLAR	D-P (GERMANY)
REINFORCEMENT RIBS	LTN-0.8 STICK	SPORTWARE CO. (CHINA)
THREAD	SERAFIL 60	AMAN (GERMANY)

SUSPENSION LINES	FABRIC CODE	SUPPLIER
UPPER CASCADES	A-8001/U-050	EDELRID (GERMANY)
UPPER CASCADES	A-8001/U-070	EDELRID (GERMANY)
MIDDLE CASCADES	A-8001/U-070	EDELRID (GERMANY)
MIDDLE CASCADES	A-8001/U-090	EDELRID (GERMANY)
MIDDLE CASCADES	A-8001/U-130	EDELRID (GERMANY)
MIDDLE CASCADES	A-8001/U-190	EDELRID (GERMANY)
MAIN	A-8001/U-130	EDELRID (GERMANY)
MAIN	A-8001/U-190	EDELRID (GERMANY)
MAIN	A-8001/U-230	EDELRID (GERMANY)
MAIN	A-8001/U-340	EDELRID (GERMANY)
MAIN BREAK	TARAX-240	EDELRID (GERMANY)
THREAD	SERAFIL 60	AMAN (GERMANY)

RISERS	FABRIC CODE	SUPPLIER
MATERIAL	G-R 22	TECNI SANGLES (FRANCE)
COLOR INDICATOR	PAD	TECNI SANGLES (FRANCE)
THREAD	V138	COATS (ENGLAND)
MAILLONS	MRI4	ANSUNG PRECISION (KOREA)
PULLEYS	S15 BB	RONSTAN (AUSTRALIA)



LINE REPLACEMENT

The use of new high performance materials in modern wings is now common. The advantages of using these materials in terms of performance are widely acknowledged as part of our sport's evolution. However, along with those technological advances come additional responsibilities which cannot be avoided. As a result, line inspection and replacement must be carried out more frequently. That increased frequency appears to be encouraging some pilots to try to perform line replacement themselves.

WE STRONGLY RECOMMEND ANY LINE REPLACEMENT IS PERFORMED BY AN AUTHORISED SPECIALIST ONLY.

Ultimately, if the pilot decides to perform any line replacement without professional oversight they therefore assume all responsibility. In this case, these guidelines will have to be followed.

BEFORE REMOVING ANY LINES, CHECK:

- That the line plan is correct according to the glider model and size.
- That the line kit is complete and correct.
- Never assume but always check each individual line for the correct specification.

AFTER CONFIRMING THAT ALL LINES ARE CORRECT:

- Fit the new line(s) WITHOUT removing the label.
- Once replaced, measure each line length to confirm the correct measurement.
- Inflate the wing to check for any irregularities.
- The line labels may then be removed but NOT BEFORE completion of the line replacement.

Niviuk strongly recommends for any line replacement to be carried out by an authorised professional only, and will not accept responsibility for any damage or injury caused as a result of incorrect re-assembly.

RISER PLAN

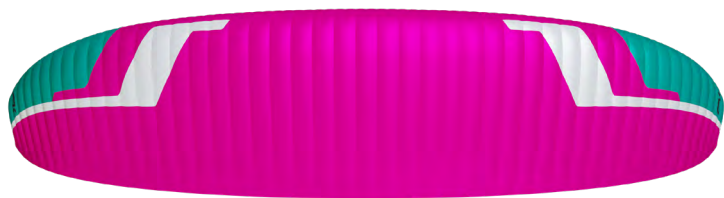
A	B	C	D
4A1	4B1	3C1	3D1
4A2	4B2	3C2	3D2
3A1	3B1	2C1	2D1
		ST1	



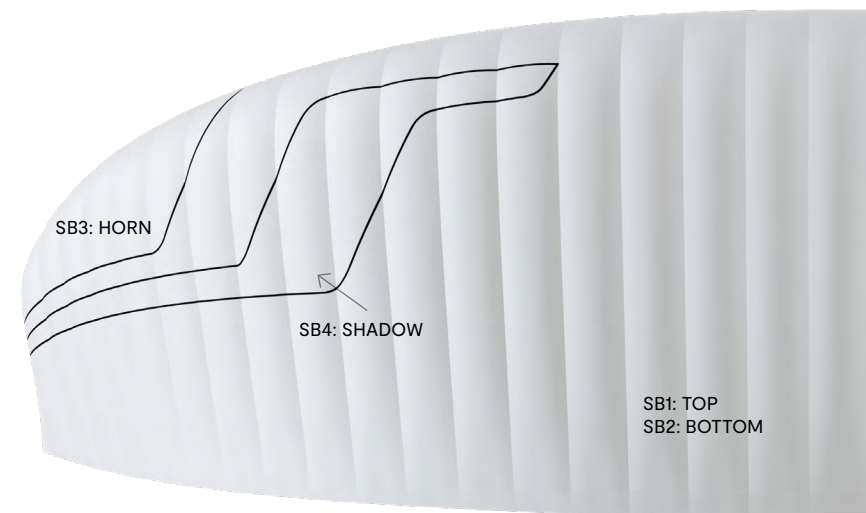
COLORS



TROPIK	SB1	LIMA	TOP	REF: 500
	SB2	WHITE	BOTTOM - ALL WHITE	REF: 001
	SB3	PINK	HORN	REF: 19-2047
	SB4	BLACK	SHADOW	REF: 001

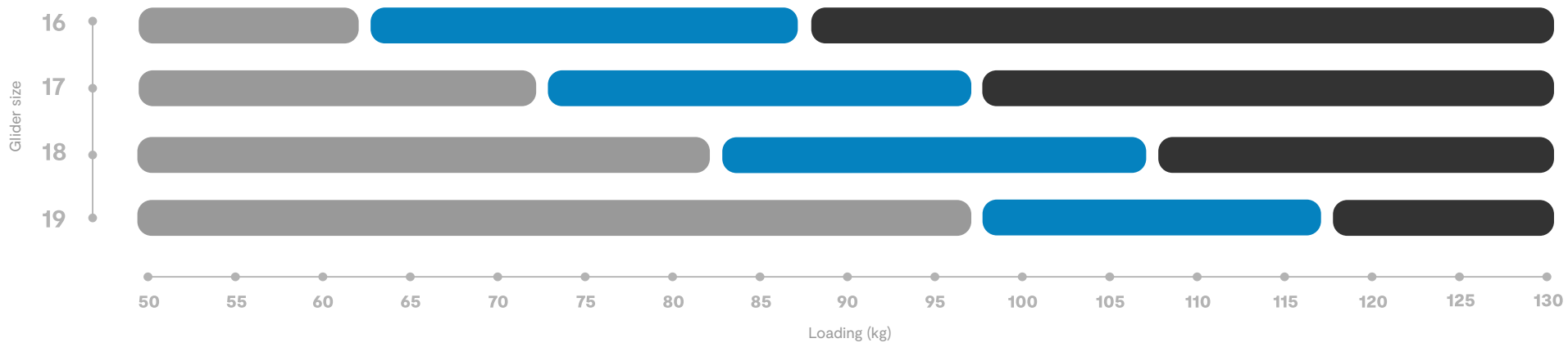


SKYFIRE	SB1	PINK	TOP	REF: 19-2047
	SB2	WHITE	BOTTOM - ALL WHITE	REF: 001
	SB3	SPECTRA GREEN	HORN	REF: 17-5335
	SB4	WHITE	SHADOW	REF: 001



WING LOAD TECHNICAL DATA

N-GRAVITY 6



Smooth



Intermediate



Powerful

LINES TECHNICAL DATA

N-Gravity 6 16

REF.	MAT.	kg	COLOR	mm	REF.	MAT.	kg	COLOR	mm	REF.	MAT.	kg	COLOR	mm	REF.	MAT.	kg	COLOR	mm	REF.	MAT.	kg	COLOR	mm	
A					B					C					D					BRAKE					
a1	8001/U	70	ORG	441	b1	8001/U	70	BLUE	438	c1	8001/U	90	BLUE	1.500	D1	8001/U	70	BLUE	1.347	br1	8001/U	50	BLUE	814	
a2	8001/U	70	ORG	398	b2	8001/U	70	BLUE	395	c2	8001/U	90	BLUE	1.416	D2	8001/U	70	BLUE	1.255	br2	8001/U	50	BLUE	647	
a3	8001/U	70	ORG	435	b3	8001/U	70	BLUE	431	c3	8001/U	90	BLUE	1.427	D3	8001/U	70	BLUE	1.277	br3	8001/U	50	BLUE	753	
a4	8001/U	70	ORG	415	b4	8001/U	70	BLUE	412	c4	8001/U	90	BLUE	867	D4	8001/U	70	BLUE	749	br4	8001/U	50	BLUE	746	
a5	8001/U	70	ORG	419	b5	8001/U	70	BLUE	416	c5	8001/U	70	BLUE	736	D5	8001/U	70	BLUE	595	br5	8001/U	50	BLUE	745	
a6	8001/U	70	ORG	426	b6	8001/U	70	BLUE	423	c6	8001/U	70	BLUE	734	D6	8001/U	70	BLUE	593	br6	8001/U	50	BLUE	604	
a7	8001/U	70	ORG	429	b7	8001/U	70	BLUE	425	c7	8001/U	70	BLUE	761	D7	8001/U	70	BLUE	646	br7	8001/U	50	BLUE	644	
a8	8001/U	70	ORG	346	b8	8001/U	70	BLUE	343	c8	8001/U	70	BLUE	645	D8	8001/U	70	BLUE	585	br8	8001/U	50	BLUE	650	
a9	8001/U	70	ORG	416	b9	8001/U	70	BLUE	412	c9	8001/U	70	BLUE	518	D9	8001/U	70	BLUE	443	br9	8001/U	50	BLUE	682	
a10	8001/U	70	ORG	397	b10	8001/U	70	BLUE	394	c10	8001/U	70	BLUE	533	D10	8001/U	70	BLUE	466	br10	8001/U	50	BLUE	577	
a11	8001/U	70	ORG	409	b11	8001/U	70	BLUE	405	c11	8001/U	70	BLUE	543	D11	8001/U	70	BLUE	484	br11	8001/U	50	BLUE	279	
a12	8001/U	70	ORG	375	b12	8001/U	70	BLUE	372	c12	8001/U	70	BLUE	437	D12	8001/U	70	BLUE	482	br12	8001/U	50	BLUE	275	
a13	8001/U	50	ORG	360	b13	8001/U	70	BLUE	358	st3	8001/U	70	BLUE	1.015	ST4	8001/U	70	BLUE	1.040						
a14	8001/U	50	ORG	394	b14	8001/U	70	BLUE	392																
a15	8001/U	70	ORG	377	b15	8001/U	70	BLUE	371																
a16	8001/U	70	ORG	295	b16	8001/U	70	BLUE	292																
a17	8001/U	70	ORG	351	b17	8001/U	70	BLUE	347																
a18	8001/U	70	ORG	331	b18	8001/U	70	BLUE	328																
a19	8001/U	70	ORG	332	b19	8001/U	70	BLUE	327																
a20	8001/U	70	ORG	294	b20	8001/U	70	BLUE	291																
a21	8001/U	70	ORG	293	b21	8001/U	70	BLUE	289																
a22	8001/U	70	ORG	315	b22	8001/U	70	BLUE	306																
a23	8001/U	70	BLUE	373	b23	8001/U	70	BLUE	353																
st1	8001/U	70	BLUE	1006	st2	8001/U	70	BLUE	1.002																
2A1	8001/U	130	ORG	1742	2B1	8001/U	130	BLUE	1.728	2C2	8001/U	130	BLUE	777	2D2	8001/U	130	BLUE	643	BR1	8001/U	70	BLUE	1.176	
2A2	8001/U	130	ORG	1672	2B2	8001/U	130	BLUE	1.659	2C3	8001/U	130	BLUE	719	2D3	8001/U	130	BLUE	584	BR2	8001/U	70	BLUE	959	
2A3	8001/U	130	ORG	1661	2B3	8001/U	130	BLUE	1.649	2C4	8001/U	130	BLUE	623	2D4	8001/U	90	BLUE	576	BR3	8001/U	70	BLUE	976	
2A4	8001/U	130	ORG	711	2B4	8001/U	130	BLUE	705	2C5	8001/U	90	BLUE	538	2D5	8001/U	90	BLUE	476	BR4	8001/U	70	BLUE	853	
2A5	8001/U	130	ORG	584	2B5	8001/U	130	BLUE	580	2C6	8001/U	90	BLUE	1.242							BR5	8001/U	70	BLUE	504
2A6	8001/U	130	ORG	596	2B6	8001/U	130	BLUE	592	2C7	8001/U	90	BLUE	1.176							BR6	8001/U	70	BLUE	737
2A7	8001/U	130	ORG	609	2B7	8001/U	130	BLUE	605	ST1	8001/U	70	BLUE	5.44											
2A8	8001/U	90	ORG	570	2B8	8001/U	90	BLUE	561																
2A9	8001/U	90	ORG	455	2B9	8001/U	90	BLUE	451																
2A10	8001/U	90	ORG	479	2B10	8001/U	90	BLUE	475																
2A11	8001/U	90	ORG	466	2B11	8001/U	90	BLUE	463																
3A2	8001/U	190	ORANGE	1012	3B2	8001/U	190	BLUE	1.004																
3A3	8001/U	190	ORANGE	952	3B3	8001/U	190	BLUE	946																
3A4	8001/U	130	ORANGE	825	3B4	8001/U	130	BLUE	816																
3A5	8001/U	130	ORANGE	751	3B5	8001/U	130	BLUE	745																
4A1	8001/U	340	ORANGE	4202	3B1	8001/U	340	BLUE	4.177	2C1	8001/U	230	BLUE	4.889	2D1	8001/U	230	BLUE	5.155	BRMAIN	TARAX	240	RED	1600	
4A1	8001/U	340	ORANGE	4151	4B1	8001/U	340	BLUE	4.129	3C1	8001/U	230	BLUE	4.658	3D1	8001/U	190	BLUE	5.041		POINT A:			1400	
4A2	8001/U	230	ORANGE	4241	4B2	8001/U	230	BLUE	4.232	3C2	8001/U	230	BLUE	4.738	3D2	8001/U	130	BLUE	4.937						
										ST1	8001/U	130	BLUE	3.949											

LINES TECHNICAL DATA

N-Gravity 6 17

REF.	MAT.	kg	COLOR	mm	REF.	MAT.	kg	COLOR	mm	REF.	MAT.	kg	COLOR	mm	REF.	MAT.	kg	COLOR	mm	REF.	MAT.	kg	COLOR	mm	
A					B					C					D					BRAKE					
a1	8001/U	70	ORG	455	b1	8001/U	70	BLUE	451	c1	8001/U	90	BLUE	1.546	D1	8001/U	70	BLUE	1.388	br1	8001/U	50	BLUE	839	
a2	8001/U	70	ORG	411	b2	8001/U	70	BLUE	407	c2	8001/U	90	BLUE	1.460	D2	8001/U	70	BLUE	1.294	br2	8001/U	50	BLUE	669	
a3	8001/U	70	ORG	448	b3	8001/U	70	BLUE	444	c3	8001/U	90	BLUE	1.472	D3	8001/U	70	BLUE	1.317	br3	8001/U	50	BLUE	775	
a4	8001/U	70	ORG	428	b4	8001/U	70	BLUE	425	c4	8001/U	90	BLUE	894	D4	8001/U	70	BLUE	772	br4	8001/U	50	BLUE	770	
a5	8001/U	70	ORG	432	b5	8001/U	70	BLUE	429	c5	8001/U	70	BLUE	759	D5	8001/U	70	BLUE	614	br5	8001/U	50	BLUE	768	
a6	8001/U	70	ORG	439	b6	8001/U	70	BLUE	436	c6	8001/U	70	BLUE	757	D6	8001/U	70	BLUE	612	br6	8001/U	50	BLUE	623	
a7	8001/U	70	ORG	443	b7	8001/U	70	BLUE	439	c7	8001/U	70	BLUE	785	D7	8001/U	70	BLUE	666	br7	8001/U	50	BLUE	664	
a8	8001/U	70	ORG	357	b8	8001/U	70	BLUE	354	c8	8001/U	70	BLUE	664	D8	8001/U	70	BLUE	603	br8	8001/U	50	BLUE	671	
a9	8001/U	70	ORG	428	b9	8001/U	70	BLUE	425	c9	8001/U	70	BLUE	534	D9	8001/U	70	BLUE	457	br9	8001/U	50	BLUE	703	
a10	8001/U	70	ORG	409	b10	8001/U	70	BLUE	407	c10	8001/U	70	BLUE	549	D10	8001/U	70	BLUE	480	br10	8001/U	50	BLUE	593	
a11	8001/U	70	ORG	421	b11	8001/U	70	BLUE	418	c11	8001/U	70	BLUE	560	D11	8001/U	70	BLUE	499	br11	8001/U	50	BLUE	288	
a12	8001/U	70	ORG	387	b12	8001/U	70	BLUE	384	c12	8001/U	70	BLUE	450	D12	8001/U	70	BLUE	497	br12	8001/U	50	BLUE	283	
a13	8001/U	50	ORG	371	b13	8001/U	70	BLUE	369	st3	8001/U	70	BLUE	1.046	ST4	8001/U	70	BLUE	1.072						
a14	8001/U	50	ORG	406	b14	8001/U	70	BLUE	404																
a15	8001/U	70	ORG	389	b15	8001/U	70	BLUE	382																
a16	8001/U	70	ORG	304	b16	8001/U	70	BLUE	301																
a17	8001/U	70	ORG	362	b17	8001/U	70	BLUE	358																
a18	8001/U	70	ORG	341	b18	8001/U	70	BLUE	338																
a19	8001/U	70	ORG	342	b19	8001/U	70	BLUE	337																
a20	8001/U	70	ORG	303	b20	8001/U	70	BLUE	300																
a21	8001/U	70	ORG	302	b21	8001/U	70	BLUE	298																
a22	8001/U	70	ORG	325	b22	8001/U	70	BLUE	315																
a23	8001/U	70	BLUE	384	b23	8001/U	70	BLUE	364																
st1	8001/U	70	BLUE	1037	st2	8001/U	70	BLUE	1.033																
<hr/>					<hr/>					<hr/>					<hr/>					<hr/>					
2A1	8001/U	130	ORG	1795	2B1	8001/U	130	BLUE	1.781	2C2	8001/U	130	BLUE	801	2D2	8001/U	130	BLUE	663	BR1	8001/U	70	BLUE	1.211	
2A2	8001/U	130	ORG	1724	2B2	8001/U	130	BLUE	1.710	2C3	8001/U	130	BLUE	742	2D3	8001/U	130	BLUE	603	BR2	8001/U	70	BLUE	992	
2A3	8001/U	130	ORG	1713	2B3	8001/U	130	BLUE	1.700	2C4	8001/U	130	BLUE	642	2D4	8001/U	90	BLUE	594	BR3	8001/U	70	BLUE	1.006	
2A4	8001/U	130	ORG	733	2B4	8001/U	130	BLUE	726	2C5	8001/U	90	BLUE	554	2D5	8001/U	90	BLUE	491	BR4	8001/U	70	BLUE	880	
2A5	8001/U	130	ORG	602	2B5	8001/U	130	BLUE	598	2C6	8001/U	90	BLUE	1.280							BR5	8001/U	70	BLUE	520
2A6	8001/U	130	ORG	615	2B6	8001/U	130	BLUE	610	2C7	8001/U	90	BLUE	1.212							BR6	8001/U	70	BLUE	759
2A7	8001/U	130	ORG	629	2B7	8001/U	130	BLUE	624	ST1	8001/U	70	BLUE	561											
2A8	8001/U	90	ORG	588	2B8	8001/U	90	BLUE	579																
2A9	8001/U	90	ORG	469	2B9	8001/U	90	BLUE	465																
2A10	8001/U	90	ORG	494	2B10	8001/U	90	BLUE	489																
2A11	8001/U	90	ORG	480	2B11	8001/U	90	BLUE	477																
<hr/>					<hr/>					<hr/>					<hr/>					<hr/>					
3A2	8001/U	190	ORANGE	1043	3B2	8001/U	190	BLUE	1.035																
3A3	8001/U	190	ORANGE	982	3B3	8001/U	190	BLUE	976																
3A4	8001/U	130	ORANGE	851	3B4	8001/U	130	BLUE	841																
3A5	8001/U	130	ORANGE	774	3B5	8001/U	130	BLUE	769																
<hr/>					<hr/>					<hr/>					<hr/>					<hr/>					
3A1	8001/U	340	ORANGE	4346	3B1	8001/U	340	BLUE	4.320	2C1	8001/U	230	BLUE	5.054	2D1	8001/U	230	BLUE	5.329	BRMAIN	TARAX	240	RED	1.600	
4A1	8001/U	340	ORANGE	4296	4B1	8001/U	340	BLUE	4.274	3C1	8001/U	230	BLUE	4.818	3D1	8001/U	190	BLUE	5.213		POINT A:			1.400	
4A2	8001/U	230	ORANGE	4390	4B2	8001/U	230	BLUE	4.381	3C2	8001/U	230	BLUE	4.902	3D2	8001/U	130	BLUE	5.107						
										ST1	8001/U	130	BLUE	4.089											

LINES TECHNICAL DATA

N-Gravity 6 18

REF.	MAT.	kg	COLOR	mm	REF.	MAT.	kg	COLOR	mm	REF.	MAT.	kg	COLOR	mm	REF.	MAT.	kg	COLOR	mm	REF.	MAT.	kg	COLOR	mm	
A					B					C					D					BRAKE					
a1	8001/U	70	ORG	468	b1	8001/U	70	BLUE	464	c1	8001/U	90	BLUE	1.590	D1	8001/U	70	BLUE	1.428	br1	8001/U	50	BLUE	863	
a2	8001/U	70	ORG	423	b2	8001/U	70	BLUE	419	c2	8001/U	90	BLUE	1.503	D2	8001/U	70	BLUE	1.331	br2	8001/U	50	BLUE	690	
a3	8001/U	70	ORG	461	b3	8001/U	70	BLUE	457	c3	8001/U	90	BLUE	1.516	D3	8001/U	70	BLUE	1.356	br3	8001/U	50	BLUE	797	
a4	8001/U	70	ORG	441	b4	8001/U	70	BLUE	438	c4	8001/U	90	BLUE	919	D4	8001/U	70	BLUE	794	br4	8001/U	50	BLUE	793	
a5	8001/U	70	ORG	444	b5	8001/U	70	BLUE	441	c5	8001/U	70	BLUE	781	D5	8001/U	70	BLUE	632	br5	8001/U	50	BLUE	790	
a6	8001/U	70	ORG	452	b6	8001/U	70	BLUE	449	c6	8001/U	70	BLUE	779	D6	8001/U	70	BLUE	630	br6	8001/U	50	BLUE	642	
a7	8001/U	70	ORG	455	b7	8001/U	70	BLUE	451	c7	8001/U	70	BLUE	808	D7	8001/U	70	BLUE	686	br7	8001/U	50	BLUE	683	
a8	8001/U	70	ORG	367	b8	8001/U	70	BLUE	365	c8	8001/U	70	BLUE	684	D8	8001/U	70	BLUE	620	br8	8001/U	50	BLUE	690	
a9	8001/U	70	ORG	441	b9	8001/U	70	BLUE	437	c9	8001/U	70	BLUE	549	D9	8001/U	70	BLUE	471	br9	8001/U	50	BLUE	723	
a10	8001/U	70	ORG	421	b10	8001/U	70	BLUE	419	c10	8001/U	70	BLUE	565	D10	8001/U	70	BLUE	494	br10	8001/U	50	BLUE	610	
a11	8001/U	70	ORG	433	b11	8001/U	70	BLUE	430	c11	8001/U	70	BLUE	576	D11	8001/U	70	BLUE	514	br11	8001/U	50	BLUE	297	
a12	8001/U	70	ORG	398	b12	8001/U	70	BLUE	395	c12	8001/U	70	BLUE	463	D12	8001/U	70	BLUE	512	br12	8001/U	50	BLUE	291	
a13	8001/U	50	ORG	382	b13	8001/U	70	BLUE	380	st3	8001/U	70	BLUE	1.077	ST4	8001/U	70	BLUE	1.104						
a14	8001/U	50	ORG	418	b14	8001/U	70	BLUE	415																
a15	8001/U	70	ORG	400	b15	8001/U	70	BLUE	394																
a16	8001/U	70	ORG	313	b16	8001/U	70	BLUE	310																
a17	8001/U	70	ORG	373	b17	8001/U	70	BLUE	368																
a18	8001/U	70	ORG	351	b18	8001/U	70	BLUE	348																
a19	8001/U	70	ORG	352	b19	8001/U	70	BLUE	346																
a20	8001/U	70	ORG	312	b20	8001/U	70	BLUE	309																
a21	8001/U	70	ORG	311	b21	8001/U	70	BLUE	307																
a22	8001/U	70	ORG	334	b22	8001/U	70	BLUE	324																
a23	8001/U	70	BLUE	395	b23	8001/U	70	BLUE	375																
st1	8001/U	70	BLUE	1068	st2	8001/U	70	BLUE	1.063																
<hr/>					<hr/>					<hr/>					<hr/>					<hr/>					
2A1	8001/U	130	ORG	1847	2B1	8001/U	130	BLUE	1.832	2C2	8001/U	130	BLUE	824	2D2	8001/U	130	BLUE	682	BR1	8001/U	70	BLUE	1.244	
2A2	8001/U	130	ORG	1774	2B2	8001/U	130	BLUE	1.760	2C3	8001/U	130	BLUE	763	2D3	8001/U	130	BLUE	620	BR2	8001/U	70	BLUE	1.024	
2A3	8001/U	130	ORG	1763	2B3	8001/U	130	BLUE	1.750	2C4	8001/U	130	BLUE	661	2D4	8001/U	90	BLUE	611	BR3	8001/U	70	BLUE	1.035	
2A4	8001/U	130	ORG	753	2B4	8001/U	130	BLUE	747	2C5	8001/U	90	BLUE	571	2D5	8001/U	90	BLUE	505	BR4	8001/U	70	BLUE	906	
2A5	8001/U	130	ORG	620	2B5	8001/U	130	BLUE	615	2C6	8001/U	90	BLUE	1.317							BR5	8001/U	70	BLUE	536
2A6	8001/U	130	ORG	633	2B6	8001/U	130	BLUE	628	2C7	8001/U	90	BLUE	1.247							BR6	8001/U	70	BLUE	780
2A7	8001/U	130	ORG	647	2B7	8001/U	130	BLUE	643	ST1	8001/U	70	BLUE	577											
2A8	8001/U	90	ORG	605	2B8	8001/U	90	BLUE	595																
2A9	8001/U	90	ORG	483	2B9	8001/U	90	BLUE	478																
2A10	8001/U	90	ORG	508	2B10	8001/U	90	BLUE	504																
2A11	8001/U	90	ORG	495	2B11	8001/U	90	BLUE	491																
<hr/>					<hr/>					<hr/>					<hr/>					<hr/>					
3A2	8001/U	190	ORANGE	1073	3B2	8001/U	190	BLUE	1.065																
3A3	8001/U	190	ORANGE	1011	3B3	8001/U	190	BLUE	1.004																
3A4	8001/U	130	ORANGE	876	3B4	8001/U	130	BLUE	865																
3A5	8001/U	130	ORANGE	797	3B5	8001/U	130	BLUE	791																
<hr/>					<hr/>					<hr/>					<hr/>					<hr/>					
3A1	8001/U	340	ORANGE	4487	3B1	8001/U	340	BLUE	4.460	2C1	8001/U	230	BLUE	5.215	2D1	8001/U	230	BLUE	5.498	BRMAIN	TARAX	240	RED	1.600	
4A1	8001/U	340	ORANGE	4436	4B1	8001/U	340	BLUE	4.414	3C1	8001/U	230	BLUE	4.974	3D1	8001/U	190	BLUE	5.381		POINT A:			1.400	
4A2	8001/U	230	ORANGE	4535	4B2	8001/U	230	BLUE	4.525	3C2	8001/U	230	BLUE	5.062	3D2	8001/U	130	BLUE	5.272						
										ST1	8001/U	130	BLUE	4.225											

LINES TECHNICAL DATA

N-Gravity 6 19

REF.	MAT.	kg	COLOR	mm	REF.	MAT.	kg	COLOR	mm	REF.	MAT.	kg	COLOR	mm	REF.	MAT.	kg	COLOR	mm	REF.	MAT.	kg	COLOR	mm	
A					B					C					D					BRAKE					
a1	8001/U	70	ORG	487	b1	8001/U	70	BLUE	483	c1	8001/U	90	BLUE	1.654	D1	8001/U	70	BLUE	1.485	br1	8001/U	50	BLUE	899	
a2	8001/U	70	ORG	440	b2	8001/U	70	BLUE	437	c2	8001/U	90	BLUE	1.564	D2	8001/U	70	BLUE	1.386	br2	8001/U	50	BLUE	721	
a3	8001/U	70	ORG	479	b3	8001/U	70	BLUE	476	c3	8001/U	90	BLUE	1.579	D3	8001/U	70	BLUE	1.412	br3	8001/U	50	BLUE	828	
a4	8001/U	70	ORG	459	b4	8001/U	70	BLUE	456	c4	8001/U	90	BLUE	957	D4	8001/U	70	BLUE	826	br4	8001/U	50	BLUE	827	
a5	8001/U	70	ORG	462	b5	8001/U	70	BLUE	459	c5	8001/U	70	BLUE	813	D5	8001/U	70	BLUE	658	br5	8001/U	50	BLUE	823	
a6	8001/U	70	ORG	471	b6	8001/U	70	BLUE	468	c6	8001/U	70	BLUE	811	D6	8001/U	70	BLUE	655	br6	8001/U	50	BLUE	668	
a7	8001/U	70	ORG	474	b7	8001/U	70	BLUE	470	c7	8001/U	70	BLUE	842	D7	8001/U	70	BLUE	715	br7	8001/U	50	BLUE	711	
a8	8001/U	70	ORG	383	b8	8001/U	70	BLUE	380	c8	8001/U	70	BLUE	712	D8	8001/U	70	BLUE	645	br8	8001/U	50	BLUE	718	
a9	8001/U	70	ORG	459	b9	8001/U	70	BLUE	455	c9	8001/U	70	BLUE	572	D9	8001/U	70	BLUE	490	br9	8001/U	50	BLUE	753	
a10	8001/U	70	ORG	439	b10	8001/U	70	BLUE	436	c10	8001/U	70	BLUE	588	D10	8001/U	70	BLUE	514	br10	8001/U	50	BLUE	634	
a11	8001/U	70	ORG	451	b11	8001/U	70	BLUE	447	c11	8001/U	70	BLUE	600	D11	8001/U	70	BLUE	535	br11	8001/U	50	BLUE	309	
a12	8001/U	70	ORG	414	b12	8001/U	70	BLUE	411	c12	8001/U	70	BLUE	482	D12	8001/U	70	BLUE	533	br12	8001/U	50	BLUE	303	
a13	8001/U	50	ORG	397	b13	8001/U	70	BLUE	395	st3	8001/U	70	BLUE	1.121	ST4	8001/U	70	BLUE	1.149						
a14	8001/U	50	ORG	435	b14	8001/U	70	BLUE	432																
a15	8001/U	70	ORG	417	b15	8001/U	70	BLUE	410																
a16	8001/U	70	ORG	326	b16	8001/U	70	BLUE	323																
a17	8001/U	70	ORG	388	b17	8001/U	70	BLUE	383																
a18	8001/U	70	ORG	365	b18	8001/U	70	BLUE	362																
a19	8001/U	70	ORG	366	b19	8001/U	70	BLUE	361																
a20	8001/U	70	ORG	325	b20	8001/U	70	BLUE	322																
a21	8001/U	70	ORG	324	b21	8001/U	70	BLUE	319																
a22	8001/U	70	ORG	348	b22	8001/U	70	BLUE	338																
a23	8001/U	70	BLUE	412	b23	8001/U	70	BLUE	390																
st1	8001/U	70	BLUE	1111	st2	8001/U	70	BLUE	1.107																
<hr/>					<hr/>					<hr/>					<hr/>					<hr/>					
2A1	8001/U	130	ORG	1922	2B1	8001/U	130	BLUE	1.906	2C2	8001/U	130	BLUE	858	2D2	8001/U	130	BLUE	709	BR1	8001/U	70	BLUE	1.293	
2A2	8001/U	130	ORG	1846	2B2	8001/U	130	BLUE	1.832	2C3	8001/U	130	BLUE	795	2D3	8001/U	130	BLUE	646	BR2	8001/U	70	BLUE	1.071	
2A3	8001/U	130	ORG	1837	2B3	8001/U	130	BLUE	1.823	2C4	8001/U	130	BLUE	688	2D4	8001/U	90	BLUE	636	BR3	8001/U	70	BLUE	1.077	
2A4	8001/U	130	ORG	784	2B4	8001/U	130	BLUE	777	2C5	8001/U	90	BLUE	594	2D5	8001/U	90	BLUE	526	BR4	8001/U	70	BLUE	944	
2A5	8001/U	130	ORG	645	2B5	8001/U	130	BLUE	640	2C6	8001/U	90	BLUE	1.371							BR5	8001/U	70	BLUE	559
2A6	8001/U	130	ORG	659	2B6	8001/U	130	BLUE	654	2C7	8001/U	90	BLUE	1.298							BR6	8001/U	70	BLUE	810
2A7	8001/U	130	ORG	675	2B7	8001/U	130	BLUE	670	ST1	8001/U	70	BLUE	600											
2A8	8001/U	90	ORG	629	2B8	8001/U	90	BLUE	619																
2A9	8001/U	90	ORG	503	2B9	8001/U	90	BLUE	498																
2A10	8001/U	90	ORG	529	2B10	8001/U	90	BLUE	524																
2A11	8001/U	90	ORG	515	2B11	8001/U	90	BLUE	511																
<hr/>					<hr/>					<hr/>					<hr/>					<hr/>					
3A2	8001/U	190	ORANGE	1117	3B2	8001/U	190	BLUE	1.108																
3A3	8001/U	190	ORANGE	1053	3B3	8001/U	190	BLUE	1.046																
3A4	8001/U	130	ORANGE	911	3B4	8001/U	130	BLUE	901																
3A5	8001/U	130	ORANGE	829	3B5	8001/U	130	BLUE	823																
<hr/>					<hr/>					<hr/>					<hr/>					<hr/>					
3A1	8001/U	340	ORANGE	4690	3B1	8001/U	340	BLUE	4.663	2C1	8001/U	230	BLUE	5.448	2D1	8001/U	230	BLUE	5.743	BRMAIN	TARAX	240	RED	1.600	
4A1	8001/U	340	ORANGE	4640	4B1	8001/U	340	BLUE	4.617	3C1	8001/U	230	BLUE	5.200	3D1	8001/U	190	BLUE	5.624	POINT A: 1.400					
4A2	8001/U	230	ORANGE	4744	4B2	8001/U	230	BLUE	4.735	3C2	8001/U	230	BLUE	5.293	3D2	8001/U	130	BLUE	5.512						
										ST1	8001/U	130	BLUE	4.423											

LINE MEASUREMENTS

N-GRAVITY 6 - 16

LINES HEIGHT MM

	A	B	C	D	br
1	6380	6338	6379	6492	6785
2	6337	6295	6295	6400	6619
3	6303	6262	6306	6422	6508
4	6284	6243	6292	6423	6501
5	6277	6236	6161	6270	6356
6	6283	6243	6101	6209	6215
7	6298	6259	6128	6261	6131
8	6215	6177	5995	6088	6138
9	6158	6120	5869	5947	5984
10	6139	6103	5798	5869	5879
11	6103	6067	5809	5887	5815
12	6069	6034	5557	5602	5810
13	6068	6034	5503	5528	
14	6101	6067			
15	6009	5975			
16	5927	5897			
17	5868	5841			
18	5848	5822			
19	5798	5774			
20	5760	5739			
21	5746	5725			
22	5768	5741			
23	5558	5539			
24	5494	5490			

RISERS LENGHT MM

A	B	C	D	
500	500	500	500	STANDARD
350	425	462	500	ACCELERATED

N-GRAVITY 6 - 17

LINES HEIGHT MM

	A	B	C	D	br
1	6592	6548	6590	6707	7006
2	6547	6504	6505	6613	6836
3	6513	6470	6517	6636	6723
4	6493	6451	6503	6638	6718
5	6486	6444	6368	6480	6570
6	6493	6452	6307	6418	6425
7	6509	6469	6335	6472	6339
8	6423	6384	6199	6294	6346
9	6364	6326	6068	6148	6187
10	6345	6308	5996	6068	6077
11	6309	6272	6006	6088	6011
12	6274	6238	5747	5793	6006
13	6273	6238	5691	5717	
14	6307	6272			
15	6213	6178			
16	6128	6097			
17	6068	6039			
18	6046	6020			
19	5995	5970			
20	5956	5934			
21	5942	5920			
22	5965	5937			
23	5749	5729			
24	5682	5678			

RISERS LENGHT MM

A	B	C	D	
500	500	500	500	STANDARD
350	425	462	500	ACCELERATED

N-GRAVITY 6 - 18

LINES HEIGHT MM

	A	B	C	D	br
1	6797	6752	6795	6916	7220
2	6751	6707	6708	6819	7047
3	6716	6672	6721	6844	6933
4	6697	6653	6708	6847	6930
5	6689	6646	6569	6684	6778
6	6697	6655	6507	6621	6629
7	6714	6672	6536	6677	6541
8	6626	6585	6396	6494	6548
9	6565	6526	6262	6344	6384
10	6546	6507	6187	6262	6270
11	6508	6470	6199	6282	6201
12	6473	6436	5931	5979	6195
13	6472	6436	5874	5901	
14	6507	6471			
15	6410	6374			
16	6323	6291			
17	6261	6232			
18	6239	6212			
19	6186	6161			
20	6146	6124			
21	6132	6109			
22	6155	6127			
23	5933	5913			
24	5865	5860			

RISERS LENGHT MM

A	B	C	D	
500	500	500	500	STANDARD
350	425	462	500	ACCELERATED

LINE MEASUREMENTS

N-GRAVITY 6 - 19

LINES HEIGHT MM

	A	B	C	D	br
1	7094	7047	7092	7218	7530
2	7047	7001	7002	7119	7352
3	7011	6965	7017	7145	7237
4	6991	6946	7004	7149	7236
5	6984	6939	6861	6981	7080
6	6992	6948	6796	6915	6925
7	7010	6967	6827	6974	6834
8	6919	6877	6682	6784	6842
9	6856	6816	6543	6628	6669
10	6837	6796	6465	6543	6550
11	6798	6758	6477	6564	6477
12	6761	6723	6198	6249	6471
13	6760	6723	6139	6167	
14	6797	6760			
15	6697	6659			
16	6606	6572			
17	6541	6511			
18	6519	6490			
19	6464	6438			
20	6422	6399			
21	6407	6383			
22	6432	6402			
23	6201	6179			
24	6129	6125			

RISERS LENGHT MM

A	B	C	D	
500	500	500	500	STANDARD
350	425	462	500	ACCELERATED

SUSPENSION

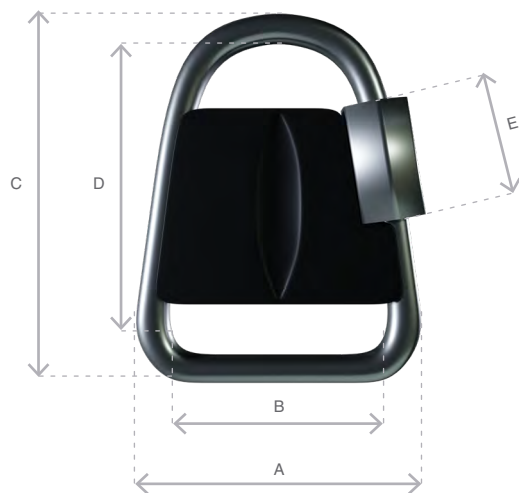
MATERIAL CODE		A-8001/U	A-8001/U	A-8001/U	A-8001/U	A-8001/U	A-8001/U	A-8001/U	TARAX
STRENGTH CODE		050	070	90	130	190	230	340	240
DIAMETER m/m	∅	0,5	0,7	0,8	0,9	1,1	1,1 x 1,4	1,4 X 1,9	1,9
CORE MATERIAL		ARAMID	ARAMID	ARAMID	ARAMID	ARAMID	ARAMID	ARAMID	Dyneema
SLEEVE MATERIAL		NO	NO	NO	NO	NO	NO	NO	Polyester
WEIGHT G/M	TOTAL	0,3	0,4	0,5	0,8	1,1	1,4	2,1	2,3
BREAKING STRENGTH daN	MINIMUM	50	70	90	130	190	230	360	240
	MAXIMUM	59	78	110	144	211	255	380	
STRENGTH AFTER 5.000 BENDING CYCLES	TEST EN	26	39	49	88	52	69	196,6	
ELONGATION AT	5 daN en %	0,4	0,5	0,4	0,4	0,4	0,3	0,2	0,1-0,3
	10 daN en %	0,7	0,7	0,6	0,6	0,6	0,5	0,3	0,2-0,4
	15 daN en %	1,1	1	0,8	0,8	0,7	0,6	0,4	0,2-0,6
	20 daN en %	1,5	1,3	1	0,9	0,9	0,7	0,5	0,3-0,7
	25 daN en %	1,9	1,5	1,3	1	1	0,8	0,6	0,4-0,8
	30 daN en %	3,3	2,8	2,3	1,8	1,6	1,3		
	75 daN en %		3,7	3,2	3,1	2,7	2,3	1,5	0,9-1,2
	100 daN en %					2,6	3,6	1,9	1,1-1,5
	125 daN en %					3,5	3,3		
	150 daN en %					4,3	3,6	2,6	1,5-2,1
	175 daN en %								
	200 daN en %							3,1	2-2,8
	250 daN en %							3,6	
ELONGATION MAX. BREAKING STRENGTH %		3,8	3,9	4,3	4	4,4	4,4		

MAILLON & PULLEY TECHNICAL DATA

DESCRIPTION

MAILLON	DELTA
CODE	MRI4
MATERIAL	STAINLESS STEEL
SIZE	4,3 m/m
WEIGHT	12 G/PIECE
QUANTITY	8 PIECES
INSERTS	2 GREEN / 6 BLACK

TECHNICAL SPECIFICATIONS



DIMENSIONS	m/m
A	28
B	20
C	38
D	30
E	11
LOAD	KG
WORKING LIMIT	150
BREAKING	750

MATERIAL

AISI 304 STAINLESS STEEL

STANDARD

CLOSING APPLIED BY MANUAL & ENTIRE SCREWING OF THE NUT

TO GUARANTEE THE HIGHEST SAFETY (NO THREAD SHOULD BE OBVIOUS)

SYSTEMATIC CONTROL OF MAILLON QUICK-LINKS BEFORE EVERY FLIGHT

THREAD

WING MAKING

NAME	SERAFIL
N° OF REFERENCE	60
MATERIAL	POLYESTER
TYPE OF FINISH	SILK
LINEAR DENSITY	NM 61 / 3 (DTEX 163 * 3)
BREAKING STRENGTH	3,000 CN
ELONGATION	17,00%

QUALITIES SERAFIL

SOLIDITY ARTIFICIAL LIGTH	ISO 105 B02 > 5 - 6
SOLIDITY SWEAT	ISO 105 E04 > 4
SOLIDITY WASHING	ISO 105 C04 > 3
SOLIDITY GRAZE IN DRY	ISO 105 X12 > 4
SOLIDITY WASHING IN DRY	ISO 105 D01 > 3 - 4
TREATMENT WATER REPELLENT	WR

RISERS MAKING

NAME	COATS BONDED C.F.P.
N° OF REFERENCE	V138
MATERIAL	POLYESTER
TYPE OF FINISH	SILK
BREAKING STRENGTH	9,5 KG
ELONGATION	19%

RISERS

RISERS

N° OF REFERENCE	G-R 22
MATERIAL	POLYESTER
WIDTH	22 M/M
THICKNESS	1,52 M/M
BREAKING STRENGTH	1,100DAN
ELONGATION	MAX. 15%
WEIGHTH	25 G* L.M.
COLOR	BLACK

COLOR INDICATOR

N° OF REFERENCE	IC-G 1-2
MATERIAL	POLYESTER
WIDTH	70 M/M
THICKNESS	0,80 M/M
BREAKING STRENGTH	130 DN
ELONGATION	35 %
WEIGHTH	32 G * L.M.
COLOR	GREEN

LOOPS

N° OF REFERENCE	LKI - 10
MATERIAL	NYLON
WIDTH	10 M/M
BREAKING STRENGTH	84 KG
ELONGATION	30 %
WEIGHTH	5,5 G/M
COLOR	WHITE



Niviuk Paragliders

C/ Del Ter 6 - nave D
17165 La Cellera de Ter - Girona - Spain
+34 972 422 878 | info@niviuk.com

www.niviuk.com