

KOYOT 5 P

Technical *specifications*



TECHNICAL SPECIFICATIONS

			22	24	26	28
CELLS	NUMBER		39	39	39	39
ASPECT RATIO	FLAT		4,7	4,7	4,7	4,7
AREA	FLAT	m2	22	24	26	28
	PROJECTED	m2	18,92	20,62	22,24	23,99
SPAN	FLAT	m	10,27	10,72	11,13	11,56
CORD	MAXIMUM	m	2,66	2,77	2,88	3
LINES	TOTAL	m	213	223	233	242
	MAIN		2+1/3/2	2+1/3/2	2+1/3/2	2+1/3/2
RISERS	NUMBER	3+1	A+A'/B/C	A+A'/B/C	A+A'/B/C	A+A'/B/C
	ACCELERATOR	mm	130	130	130	130
TOTAL WEIGHT IN FLIGHT	MIN-MAX	kg	45-70	60-80	75-95	90-115
GLIDER WEIGHT		kg	3,2	3,5	3,8	4,1
CERTIFICATION			EN/LTF A	EN/LTF A	EN/LTF A	EN/LTF A

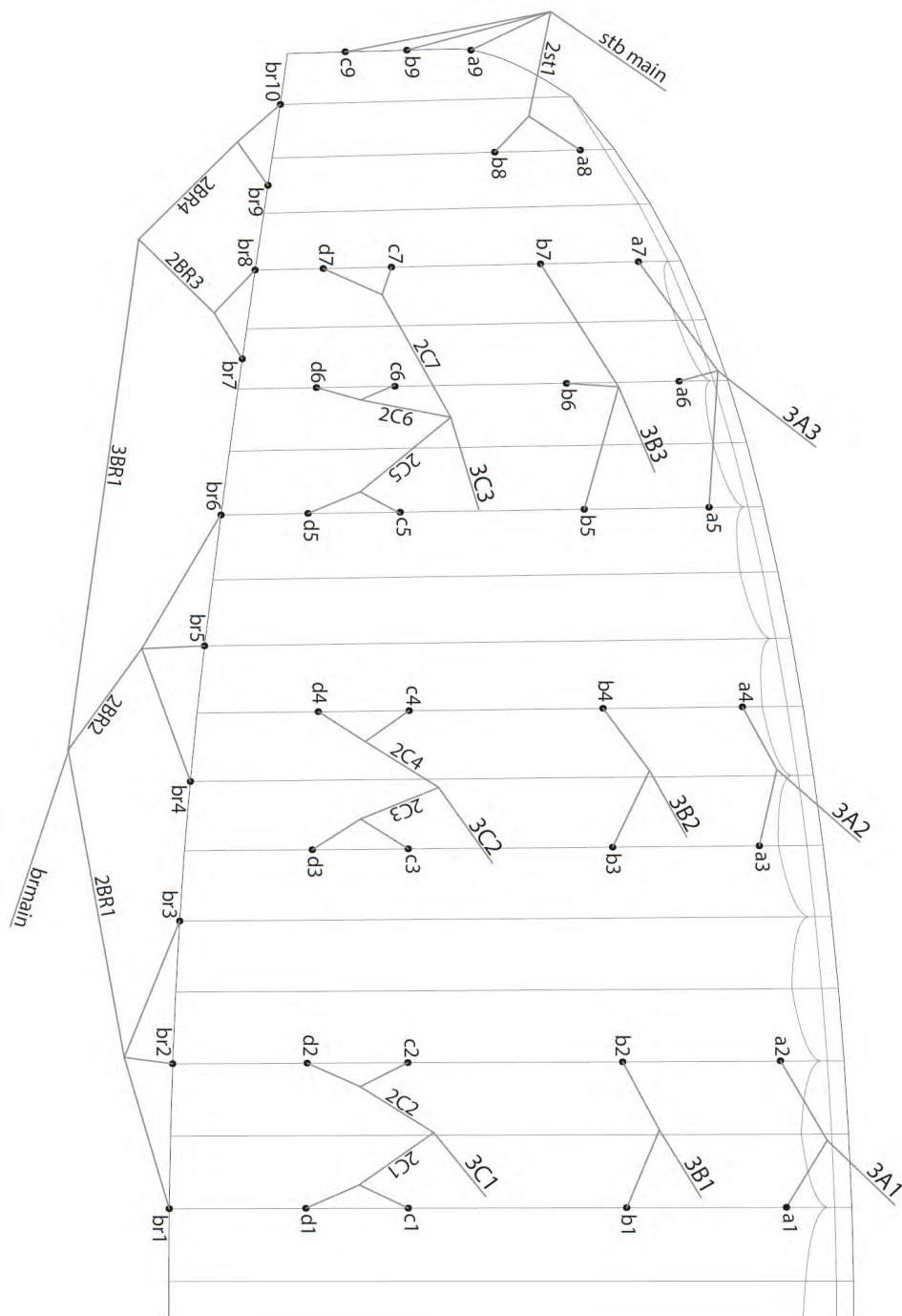
MATERIALS TECHNICAL DATA

CANOPY	FABRIC CODE	SUPPLIER
UPPER SURFACE	2044 32 PS	DOMINICO TEX CO (Korea)
BOTTOM SURFACE	70000 E3H	PORCHER IND (France)
PROFILES	70000 E91 / 2044 32 FM	PORCHER IND (FRANCE)/ DOMINICO TEX CO (Korea)
DIAGONALS	30 DFM / 70000 E91 / 2044 32 FM	PORCHER IND (FRANCE)/ DOMINICO TEX CO (Korea)
LOOPS	LKI - 10	KOLON IND. (KOREA)
REINFORCEMENT LOOPS	W-420	D-P (GERMANY)
TRAILING EDGE REINFORCEMENT	MYLAR	D-P (GERMANY)
RIBS REINFORCEMENT	LTN-0.8/1 STICK	SPORTWARE CO.CHINA
THREAD	SERAFIL 60	AMAN (GERMANY)

SUSPENSION LINES	FABRIC CODE	SUPPLIER
UPPER CASCADES	DC - 60	LIROS GMHB (GERMANY)
UPPER CASCADES	A-8001/U 50	EDELRID (GERMANY)
UPPER CASCADES	A-8001/U 70	EDELRID (GERMANY)
UPPER CASCADES	A-8001/U 130	EDELRID (GERMANY)
MIDDLE CASCADES	TNL - 80	TEIJIM LIMITED (JAPAN)
MIDDLE CASCADES	A-8001/U 70	EDELRID (GERMANY)
MIDDLE CASCADES	A-8001/U 90	EDELRID (GERMANY)
MIDDLE CASCADES	A-8001/U 130	EDELRID (GERMANY)
MAIN	TNL - 220	TEIJIM LIMITED (JAPAN)
MAIN	TNL - 280	TEIJIM LIMITED (JAPAN)
MAIN BREAK	TARAX-200	EDELRID (GERMANY)
THREAD	SERAFIL 60	AMAN (GERMANY)

RISERS	FABRIC CODE	SUPPLIER
MATERIAL	3455	COUSIN (FRANCE)
COLOR INDICATOR	210D	TECNI SANGLES (FRANCE)
THREAD	V138	COATS (ENGLAND)

SUSPENSION PLAN



LINE REPLACEMENT

The use of new high performance materials in modern wings is now common. The advantages of using these materials in terms of performance are widely acknowledged as part of our sport's evolution. However, along with those technological advances come additional responsibilities which cannot be avoided. As a result, line inspection and replacement must be carried out more frequently. That increased frequency appears to be encouraging some pilots to try to perform line replacement themselves.

WE STRONGLY RECOMMEND ANY LINE REPLACEMENT IS PERFORMED BY AN AUTHORISED SPECIALIST ONLY.

Ultimately, if the pilot decides to perform any line replacement without professional oversight they therefore assume all responsibility. In this case, these guidelines will have to be followed.

BEFORE REMOVING ANY LINES, CHECK:

- That the line plan is correct according to the glider model and size.
- That the line kit is complete and correct.
- Never assume but always check each individual line for the correct specification.

AFTER CONFIRMING THAT ALL LINES ARE CORRECT:

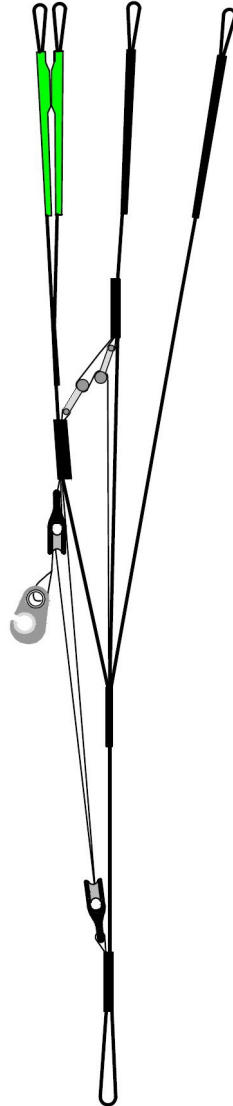
- Fit the new line(s) WITHOUT removing the label.
- Once replaced, measure each line length to confirm the correct measurement.
- Inflate the wing to check for any irregularities.
- The line labels may then be removed but NOT BEFORE completion of the line replacement.

Niviuk strongly recommends for any line replacement to be carried out by an authorised professional only, and will not accept responsibility for any damage or injury caused as a result of incorrect re-assembly.

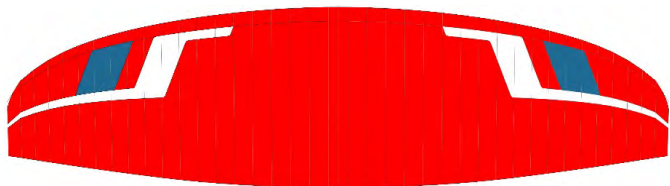
RISERS PLAN

A	A'	B	C
3A1	3A3	3B1	3C1
3A2		3B2	3C2
		3B3	3C3

stb main



COLORS



KRATER	SB1	DRAGON RED	TOP	REF: 636
	SB2	WHITE	BOTTOM - ALL WHITE	REF:001
	SB3	WHITE	SHADOW 1	REF:001
	SB4	SLATE BLUE	SHADOW 2	REF: 317



TEKNO	SB1	SLATE BLUE	TOP	REF: 317
	SB2	WHITE	BOTTOM - ALL WHITE	REF: 001
	SB3	GOLD	HORN	REF: 939
	SB4	WHITE	SHADOW	REF: 001

WING LOAD

KOYOT 5 P

22			24			26			28		
P.T.V.		KG/M2	P.T.V.		KG/M2	P.T.V.		KG/M2	P.T.V.		KG/M2
45	=	2,05	60	=	2,50	75	=	2,88	90	=	3,21
50	=	2,38	65	=	2,71	80	=	3,08	95	=	3,39
55	=	2,62	70	=	2,92	85	=	3,27	100	=	3,57
60	=	2,86	75	=	3,13	90	=	3,46	105	=	3,75
65	=	3,10	80	=	3,33	95	=	3,65	110	=	3,93
70	=	3,33							115	=	4,11

LINES

KOYOT 5 P					22																								
A					B					C					D					BRAKE									
ref.	mat.	kg	colour	m/m	ref.	mat.	kg	colour	m/m	ref.	mat.	kg	colour	m/m	ref.	mat.	kg	colour	m/m	ref.	mat.	kg	colour	m/m					
a1	8001/U	130	Orange	1348	b1	8001/U	130	Blue	1334	c1	8001/U	70	Blue	955	d1	8001/U	50	Blue	1065	br1	DC	60	wht	1681					
a2	8001/U	130	Orange	1314	b2	8001/U	130	Blue	1299	c2	8001/U	70	Blue	936	d2	8001/U	50	Blue	1048	br2	DC	60	wht	1359					
a3	8001/U	130	Orange	1278	b3	8001/U	130	Blue	1254	c3	8001/U	70	Blue	889	d3	8001/U	50	Blue	996	br3	DC	60	wht	1236					
a4	8001/U	130	Orange	1242	b4	8001/U	130	Blue	1222	c4	8001/U	70	Blue	847	d4	8001/U	50	Blue	946	br4	DC	60	wht	1472					
a5	8001/U	70	Orange	1951	b5	8001/U	70	Blue	1874	c5	8001/U	50	Blue	663	d5	8001/U	50	Blue	768	br5	DC	60	wht	1308					
a6	8001/U	70	Orange	1844	b6	8001/U	70	Blue	1779	c6	8001/U	50	Blue	735	d6	8001/U	50	Blue	827	br6	DC	60	wht	1319					
a7	8001/U	70	Orange	1779	b7	8001/U	70	Blue	1735	c7	8001/U	50	Blue	494	d7	8001/U	50	Blue	565	br7	DC	60	wht	510					
a8	8001/U	50	Blue	924	b8	8001/U	50	Blue	877	c9	8001/U	50	Blue	1670						br8	DC	60	wht	374					
a9	8001/U	50	Blue	1577	b9	8001/U	50	Blue	1605											br9	DC	60	wht	559					
																									br10	DC	60	wht	470

					2st1	8001/U	70	Blue	885	2C1	8001/U	130	Blue	210						2BR1	TNL	80	red	2.226	
					stb main	TNL	80	red	3558	2C2	8001/U	130	Blue	199						2BR2	TNL	80	red	1.843	
									2C3	8001/U	130	Blue	209						2BR3	8001/U	90	Blue	620		
									2C4	8001/U	130	Blue	225						2BR4	8001/U	90	Blue	296		
									2C5	8001/U	90	Blue	943						3BR1	TNL	80	red	2.089		
									2C6	8001/U	90	Blue	764												
									2C7	8001/U	90	Blue	980												
3A1	TNL	280	green	4529	3B1	TNL	280	blue	4.446	3C1	TNL	280	blue	4674											
3A2	TNL	280	green	4525	3B2	TNL	280	blue	4.459	3C2	TNL	280	blue	4685						brmain	Tarax	200	Red	3082	
3A3	TNL	220	green	3753	3B3	TNL	220	blue	3.765	3C3	TNL	220	blue	4130						knot point:					2882

LINES

Koyot 5 P					26																				
A					B					C					D					BRAKE					
ref.	mat.	kg	colour	m/m	ref.	mat.	kg	colour	m/m	ref.	mat.	kg	colour	m/m	ref.	mat.	kg	colour	m/m	ref.	mat.	kg	colour	m/m	
a1	8001/U	130	Orange	1464	b1	8001/U	130	Blue	1448	c1	8001/U	70	Blue	1038	d1	8001/U	50	Blue	1158	br1	DC	60	wht	1827	
a2	8001/U	130	Orange	1431	b2	8001/U	130	Blue	1414	c2	8001/U	70	Blue	1018	d2	8001/U	50	Blue	1139	br2	DC	60	wht	1479	
a3	8001/U	130	Orange	1389	b3	8001/U	130	Blue	1362	c3	8001/U	70	Blue	967	d3	8001/U	50	Blue	1083	br3	DC	60	wht	1346	
a4	8001/U	130	Orange	1352	b4	8001/U	130	Blue	1330	c4	8001/U	70	Blue	921	d4	8001/U	50	Blue	1028	br4	DC	60	wht	1598	
a5	8001/U	70	Orange	2121	b5	8001/U	70	Blue	2037	c5	8001/U	50	Blue	721	d5	8001/U	50	Blue	834	br5	DC	60	wht	1422	
a6	8001/U	70	Orange	2006	b6	8001/U	70	Blue	1935	c6	8001/U	50	Blue	799	d6	8001/U	50	Blue	899	br6	DC	60	wht	1436	
a7	8001/U	70	Orange	1936	b7	8001/U	70	Blue	1888	c7	8001/U	50	Blue	537	d7	8001/U	50	Blue	614	br7	DC	60	wht	555	
a8	8001/U	50	Blue	1004	b8	8001/U	50	Blue	953	c9	8001/U	50	Blue	1815						br8	DC	60	wht	407	
a9	8001/U	50	Blue	1715	b9	8001/U	50	Blue	1745											br9	DC	60	wht	607	
					2st1	8001/U	70	Blue	962	2C1	8001/U	130	Blue	227						2BR1	TNL	80	red	2.413	
					stb main	TNL	80	red	3925	2C2	8001/U	130	Blue	218						2BR2	TNL	80	red	2.004	
										2C3	8001/U	130	Blue	226						2BR3	8001/U	90	Blue	672	
										2C4	8001/U	130	Blue	245						2BR4	8001/U	90	Blue	323	
										2C5	8001/U	90	Blue	1025						3BR1	TNL	80	red	2.278	
										2C6	8001/U	90	Blue	831											
										2C7	8001/U	90	Blue	1066											
3A1	TNL	280	green	4967	3B1	TNL	280	blue	4.873	3C1	TNL	280	blue	5124						brmain	Tarax	200	Red	3377	
3A2	TNL	280	green	4969	3B2	TNL	280	blue	4.896	3C2	TNL	280	blue	5143						knot point:					3177
3A3	TNL	220	green	4134	3B3	TNL	220	blue	4.148	3C3	TNL	220	blue	4543											

LINES

Koyot 5 P

28

A					B					C					D					BRAKE				
ref.	mat.	kg	colour	m/m	ref.	mat.	kg	colour	m/m	ref.	mat.	kg	colour	m/m	ref.	mat.	kg	colour	m/m	ref.	mat.	kg	colour	m/m
a1	8001/U	130	Orange	1519	b1	8001/U	130	Blue	1503	c1	8001/U	70	Blue	1077	d1	8001/U	50	Blue	1202	br1	DC	60	wht	1895
a2	8001/U	130	Orange	1486	b2	8001/U	130	Blue	1469	c2	8001/U	70	Blue	1057	d2	8001/U	50	Blue	1182	br2	DC	60	wht	1535
a3	8001/U	130	Orange	1441	b3	8001/U	130	Blue	1413	c3	8001/U	70	Blue	1003	d3	8001/U	50	Blue	1124	br3	DC	60	wht	1398
a4	8001/U	130	Orange	1404	b4	8001/U	130	Blue	1381	c4	8001/U	70	Blue	955	d4	8001/U	50	Blue	1067	br4	DC	60	wht	1658
a5	8001/U	70	Orange	2201	b5	8001/U	70	Blue	2114	c5	8001/U	50	Blue	748	d5	8001/U	50	Blue	866	br5	DC	60	wht	1476
a6	8001/U	70	Orange	2082	b6	8001/U	70	Blue	2008	c6	8001/U	50	Blue	829	d6	8001/U	50	Blue	933	br6	DC	60	wht	1492
a7	8001/U	70	Orange	2010	b7	8001/U	70	Blue	1960	c7	8001/U	50	Blue	557	d7	8001/U	50	Blue	638	br7	DC	60	wht	575
a8	8001/U	50	Blue	1042	b8	8001/U	50	Blue	989	c9	8001/U	50	Blue	1883						br8	DC	60	wht	423
a9	8001/U	50	Blue	1779	b9	8001/U	50	Blue	1810											br9	DC	60	wht	629
																				br10	DC	60	wht	530
					2st1	8001/U	70	Blue	998	2C1	8001/U	130	Blue	235						2BR1	TNL	80	red	2.502
					stb main	TNL	80	red	4098	2C2	8001/U	130	Blue	227						2BR2	TNL	80	red	2.080
										2C3	8001/U	130	Blue	234						2BR3	8001/U	90	Blue	697
										2C4	8001/U	130	Blue	255						2BR4	8001/U	90	Blue	336
										2C5	8001/U	90	Blue	1063						3BR1	TNL	80	red	2.367
										2C6	8001/U	90	Blue	863										
										2C7	8001/U	90	Blue	1107										
3A1	TNL	280	green	5173	3B1	TNL	280	blue	5.074	3C1	TNL	280	blue	5336						brmain	Tarax	200	Red	3516
3A2	TNL	280	green	5178	3B2	TNL	280	blue	5.103	3C2	TNL	280	blue	5359						knot point:				3316
3A3	TNL	220	green	4314	3B3	TNL	220	blue	4.328	3C3	TNL	220	blue	4739										

KOYOT 5 P 22

	A	B	C	D	BR
1	5873	5776	5825	5935	6769
2	5839	5741	5795	5907	6447
3	5799	5709	5769	5876	6324
4	5763	5677	5743	5842	6177
5	5702	5637	5724	5825	6013
6	5595	5542	5617	5705	6024
7	5530	5498	5592	5659	6076
8	5358	5311	5224		5940
9	5131	5159			5801
					5712

RISERS LENGHT mm

A	A'	B	C	
470	470	470	470	STANDARD
340	340	383	470	ACCELERATED

KOYOT 5 P 24

	A	B	C	D	BR
1	6155	6051	6105	6221	7091
2	6122	6017	6075	6191	6755
3	6082	5987	6051	6162	6627
4	6045	5955	6024	6128	6474
5	5983	5916	6005	6111	6304
6	5872	5817	5894	5986	6317
7	5804	5771	5868	5938	6369
8	5625	5576	5485		6227
9	5388	5417			6082
10					5990

RISERS LENGHT mm

A	A'	B	C	
470	470	470	470	STANDARD
340	340	383	470	ACCELERATED

KOYOT 5 P 26

	A	B	C	D	BR
1	6427	6317	6375	6495	7397
2	6394	6283	6346	6467	7049
3	6354	6254	6322	6438	6916
4	6317	6222	6295	6402	6759
5	6253	6183	6277	6386	6583
6	6138	6081	6161	6257	6597
7	6068	6034	6134	6207	6652
8	5882	5831	5736		6504
9	5636	5666			6355
10					6259

RISERS LENGHT mm

A	A'	B	C	
470	470	470	470	STANDARD
340	340	383	470	ACCELERATED

KOYOT 5 P 28

	A	B	C	D	BR
1	6688	6573	6634	6759	7693
2	6655	6539	6606	6731	7333
3	6615	6512	6582	6703	7196
4	6578	6480	6555	6667	7034
5	6513	6440	6538	6657	6852
6	6394	6334	6419	6524	6868
7	6322	6286	6391	6473	6925
8	6129	6076	5977		6773
9	5873	5904			6618
10					6519

RISERS LENGHT mm

A	A'	B	C	
470	470	470	470	STANDARD
340	340	383	470	ACCELERATED

SUSPENSION

MATERIAL CODE		TNL	TNL	TNL	DC	8001/U	8001/U	8001/U	8001/U	TARAX
STRENGTH CODE		080	220	280	060	50	70	90	130	200
DIAMETER mm	∅	1,1	1,6	1,8	0,6	0,5	0,7	0,8	0,9	1,7
CORE MATERIAL		TECHNORA	TECHNORA	TECHNORA	DYNEEMA	ARAMID	ARAMID	ARAMID	ARAMID	DYNEEMA
SLEEVE MATERIAL		POLYESTER	POLYESTER	POLYESTER	NO	NO	NO	NO	NO	POLYESTER
WEIGHT G/M	TOTAL	1,1	1,6	2,7	0,24	0,3	0,4	0,5	0,8	2
BREAKING STRENGTH daN	MINIMUM	80	220	280	60	50	70	90	130	200
	MAXIMUM	92	250	320	84	59	78	110	144	
STRENGTH AFTER										
5.000 BENDING	TEST EN	36,7	114,2	134,7	74	26	39	49	88	
CYCLES										
ELONGATION AT	5 daN en %	0,3	0,2	0,2		0,4	0,5	0,4	0,4	0,1-0,3
	10 daN en %	0,5	0,3	0,3	0,43	0,7	0,7	0,6	0,6	0,2-0,6
	15 daN en %	0,7	0,5	0,4		1,1	1	0,8	0,8	0,3-0,7
	20 daN en %	1	0,6	0,4		1,5	1,3	1	0,9	0,3-0,9
	25 daN en %	1,3	0,7	0,5		1,9	1,5	1,3	1	0,4-1
	30 daN en %	2,3	1,2	0,9	1,2	3,3	2,8	2,3	1,8	
	75 daN en %	2,8	1,8	1,3			3,7	3,2	3,1	0,8-1,7
	100 daN en %		2,2	1,7						1,2-2
	125 daN en %		2,7	2						
	150 daN en %		3	2,3						1,6-2,4
	175 daN en %		3,3	2,7						
	200 daN en %		3,8	2,8						2-2,8
ELONGATION MAX. BREAKING STRENGTH %		3	4	4,1	3,2	3,8	3,9	4,3	4	

THREAD

SAIL MAKING

NAME	SERAFIL
Nº OF REFERENCE	60
MATERIAL	POLYESTER
TYPE OF FINISH	SILK
LINEAR DENSITY	NM 61 / 3 (DTEX 163 * 3)
BREAKING STRENGTH	3,000 CN
ELONGATION	17,00%

PROPIETIES SERAFIL

SOLIDITY ARTIFICIAL LIGTH	ISO 105 B02 > 5 - 6
SOLIDITY SWEAT	ISO 105 E04 > 4
SOLIDITY WASHING	ISO 105 C04 > 3
SOLIDITY GRAZE IN DRY	ISO 105 X12 > 4
SOLIDITY WASHING IN DRY	ISO 105 D01 > 3 - 4

TREATMENT WATER REPELLENT	WR
---------------------------	----

RISERS MAKING

NOMBRE	COATS BONDED C.F.P.
Nº DE REFERENCIA	V138
MATERIAL	POLYESTER
ACABADO	SILK
RESISTENCIA A LA TRACCIÓN	9,5 KG
ELONGACIÓN	19%

RISERS

RISERS

Nº OF REFERENCE	3455
MATERIAL	POLYESTER & TECHNORA
WIDTH	12 M/M
THICKNESS	0,9 M/M
BREAKING STRENGTH	1.078 DAN
ELONGATION	MAX. 11%
WEIGHT	9,1 G* L.M.
COLOR	BLACK

COLOR INDICATOR

Nº OF REFERENCE	IC-G 1-2
MATERIAL	POLYESTER
WIDTH	70 M/M
THICKNESS	0,80 M/M
BREAKING STRENGTH	130 DN
ELONGATION	35 %
WEIGHT	32 G * L.M.
COLOR	GREEN

LOOPS

Nº OF REFERENCE	LKI - 10
MATERIAL	NYLON
WIDTH	10 M/M
BREAKING STRENGTH	84 KG
ELONGATION	30 %
WEIGHT	5,5 G/M
COLOR	WHITE



Niviuk Paragliders

C/ Del Ter 6 - nave D
17165 La Cellera de Ter - Girona - Spain
+34 972 422 878 | info@niviuk.com
niviuk.com