

HOOK 6 P

Technical *specifications*



PIVIUK BEYOND
THE GLIDE

TECHNICAL SPECIFICATIONS

			20	22	24	26	28
Cells	Number		47	47	47	47	47
Aspect ratio	Flat		5,3	5,3	5,3	5,3	5,3
	Projected		4	4	4	4	4
Area	Flat	m ²	20	22	24	26	28
	Projected	m ²	17,15	18,87	20,59	22,3	24,02
Span	Flat	m	10,3	10,8	11,28	11,74	12,18
Chord	Max	m	2,43	2,55	2,66	2,77	2,87
Lines	Total	m	205	215	226	235	244
	Main		2-1/3/2	2-1/3/2	2-1/3/2	2-1/3/2	2-1/3/2
Risers	Number	3+1	A-A' /B/C	A-A' /B/C	A-A' /B/C	A-A' /B/C	A-A' /B/C
	Speed-bar	mm	145	145	145	145	145
Glider weight		kg	3,15	3,4	3,68	3,95	4,3
Total weight in flight	Min-Max	kg	55-70	60-80	70-92	80-105	95-120
Certification			EN/LTF B	EN/LTF A+	EN/LTF A+	EN/LTF A+	EN/LTF A+

The total weight of the wing may differ ±2% due to variations in the weight of the fabric supplied by the manufacturers.

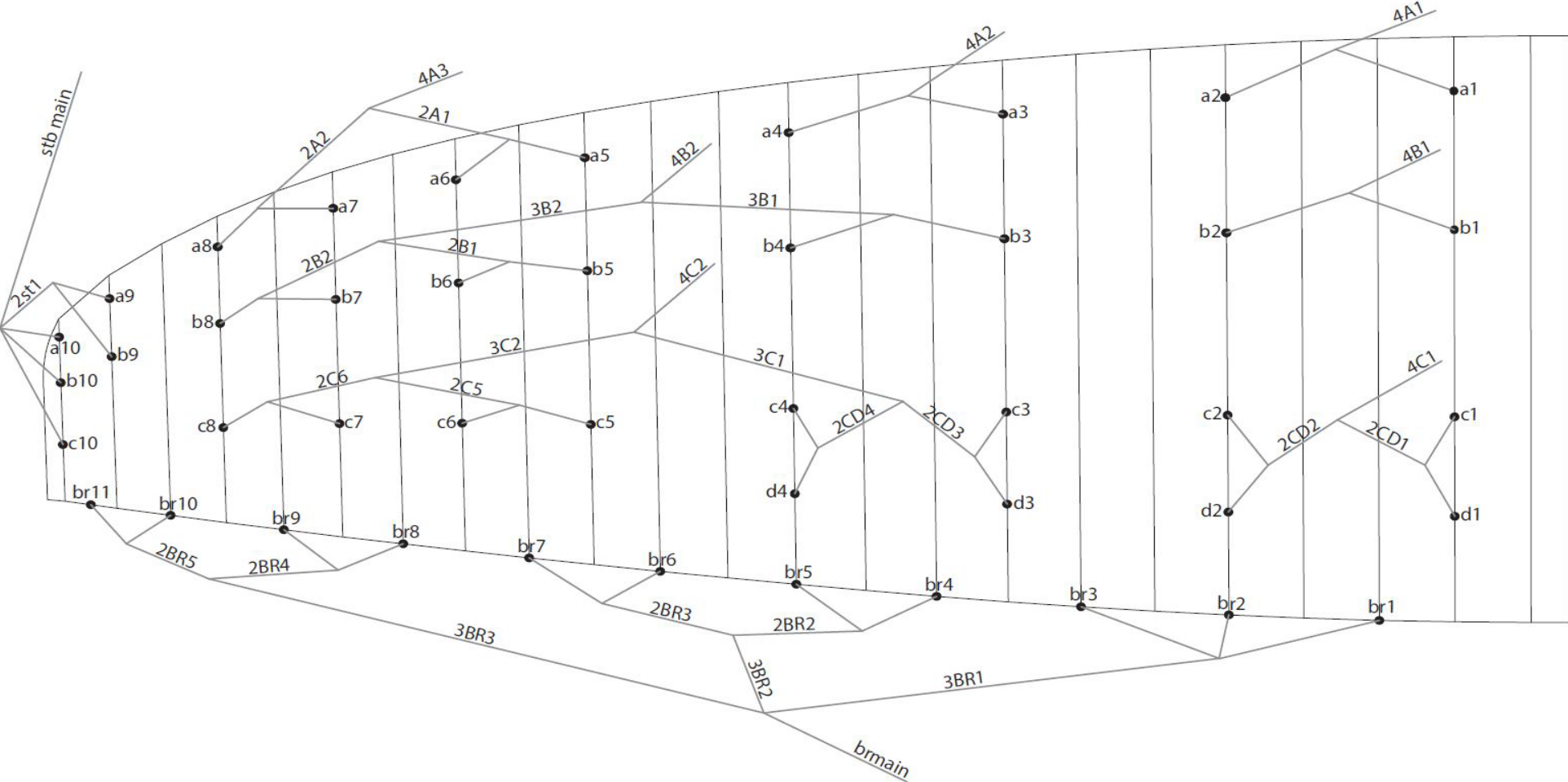
MATERIALS

CANOPY	FABRIC CODE	SUPPLIER
UPPER SURFACE	204432PS	DOMINICO TEX CO (KOREA)
BOTTOM SURFACE	70000 E3H	PORCHER SPORT (FRANCE)
PROFILES	70000 E91 / 2044-32FM	PORCHER SPORT (FRANCE) / DOMINICO TEX CO (KOREA)
DIAGONALS	70000 E91 / D30 / 2044-32FM	PORCHER SPORT (FRANCE) / DOMINICO TEX CO (KOREA)
LOOPS	LKI - 12	KOLON IND. (KOREA)
REINFORCEMENT LOOPS	RIPSTOP FABRIC	DOMINICO TEX CO (KOREA)
TRAILING EDGE REINFORCEMENT	MYLAR	D-P (GERMANY)
RIBS REINFORCEMENT	LTN-0.8/0.5 STICK	SPORTWARE CO.CHINA
THREAD	SERAFIL 60	AMAN (GERMANY)

SUSPENSION LINES	FABRIC CODE	SUPPLIER
UPPER CASCADES	A-8001/U 50	EDELRID (GERMANY)
UPPER CASCADES	A-8001/U 70	EDELRID (GERMANY)
UPPER CASCADES	A-8001/U 130	EDELRID (GERMANY)
MIDDLE CASCADES	A-8001/U 50	EDELRID (GERMANY)
MIDDLE CASCADES	A-8001/U 70	EDELRID (GERMANY)
MIDDLE CASCADES	A-8001/U 130	EDELRID (GERMANY)
MIDDLE CASCADES	A-8001/U 190	EDELRID (GERMANY)
MAIN	TNL-80	TEIJIM LIMITED (JAPAN)
MAIN	TNL-280	TEIJIM LIMITED (JAPAN)
MAIN BREAK	TARAX-200	EDELRID (GERMANY)
THREAD	SERAFIL 60	AMAN (GERMANY)

RISERS	FABRIC CODE	SUPPLIER
MATERIAL	3455	COUSIN (FRANCE)
COLOR INDICATOR	210D	TECNI SANGLES (FRANCE)
THREAD	V138	COATS (ENGLAND)
MAILLONS	3.5	ANSUNG PRECISION (KOREA)
PULLEYS	SB15	RONSTAN (AUSTRALIA)

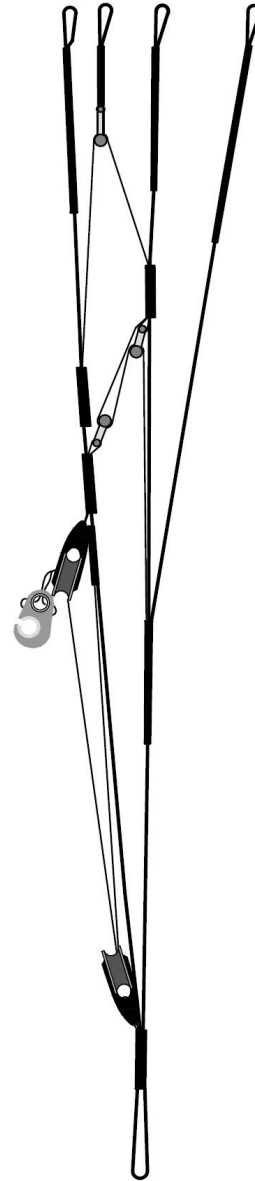
SUSPENSION PLAN



RISERS PLAN

A	A'	B	C
4A1	4A3	4B1	4C1
4A2		4B2	4C2

stb main



COLORS



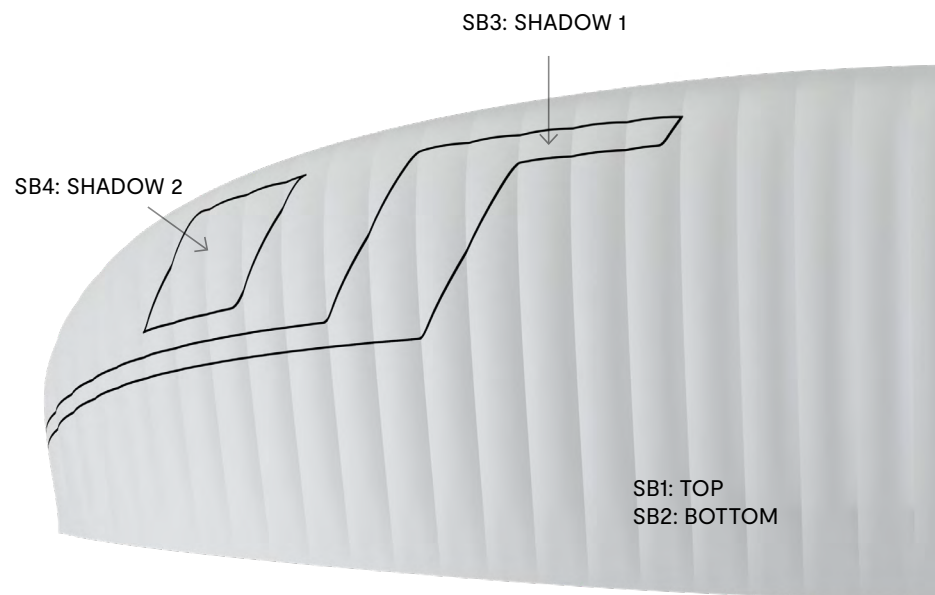
AMBER	SB1	ORANGE	TOP	REF: 744
	SB2	WHITE	BOTTOM - ALL WHITE	REF: 001
	SB3	GOLD	SHADOW 1	REF: 939



BREEZE	SB1	ROYAL BLUE	TOP	REF: 317
	SB2	WHITE	BOTTOM - ALL WHITE	REF: 001
	SB3	GOLD	SHADOW 1	REF: 939
	SB4	WHITE	SHADOW 2	REF: 001



DISKUS	SB1	SPECTRA GREEN	TOP	REF: 17-5335
	SB2	WHITE	BOTTOM - ALL WHITE	REF: 001
	SB3	DRAGON RED	SHADOW 1	REF: 636
	SB4	WHITE	SHADOW 2	REF: 001



WING LOAD

HOOK 6 P

20		22		24		26		28	
P.T.V.	KG/M2	P.T.V.	KG/M2	P.T.V.	KG/M2	P.T.V.	KG/M2	P.T.V.	KG/M2
55	= 2,75	60	= 2,73	72	= 3,00	80	= 3,08	95	= 3,39
56	= 2,80	61	= 2,77	73	= 3,04	81	= 3,12	96	= 3,43
57	= 2,85	62	= 2,82	74	= 3,08	82	= 3,15	97	= 3,46
58	= 2,90	63	= 2,86	75	= 3,13	83	= 3,19	98	= 3,50
59	= 2,95	64	= 2,91	76	= 3,17	84	= 3,23	99	= 3,54
60	= 3,00	65	= 2,95	77	= 3,21	85	= 3,27	100	= 3,57
61	= 3,05	66	= 3,00	78	= 3,25	86	= 3,31	101	= 3,61
62	= 3,10	67	= 3,05	79	= 3,29	87	= 3,35	102	= 3,64
63	= 3,15	68	= 3,09	80	= 3,33	88	= 3,38	103	= 3,68
64	= 3,20	69	= 3,14	81	= 3,38	89	= 3,42	104	= 3,71
65	= 3,25	70	= 3,18	82	= 3,42	90	= 3,46	105	= 3,75
66	= 3,30	71	= 3,23	83	= 3,46	91	= 3,50	106	= 3,79
67	= 3,35	72	= 3,27	84	= 3,50	92	= 3,54	107	= 3,82
68	= 3,40	73	= 3,32	85	= 3,54	93	= 3,58	108	= 3,86
69	= 3,45	74	= 3,36	86	= 3,58	94	= 3,62	109	= 3,89
70	= 3,50	75	= 3,41	87	= 3,63	95	= 3,65	110	= 3,93
		76	= 3,45	88	= 3,67	96	= 3,69	111	= 3,96
		77	= 3,50	89	= 3,71	97	= 3,73	112	= 4,00
		78	= 3,55	90	= 3,75	98	= 3,77	113	= 4,04
		79	= 3,59	91	= 3,79	99	= 3,81	114	= 4,07
		80	= 3,64	92	= 3,83	100	= 3,85	115	= 4,11
						101	= 3,88	116	= 4,14
						102	= 3,92	117	= 4,18
						103	= 3,96	118	= 4,21
						104	= 4,00	119	= 4,25
						105	= 4,04	120	= 4,29

LINES

HOOK 6 P 20

REF.	MAT.	kg	COLOR	mm	REF.	MAT.	kg	COLOR	mm	REF.	MAT.	kg	COLOR	mm	REF.	MAT.	kg	COLOR	mm	REF.	MAT.	kg	COLOR	mm
A					B					C					D					BRAKE				
a1	8001/U	130	BLUE	1761	b1	8001/U	130	BLUE	1740	c1	8001/U	50	BLUE	1004	d1	8001/U	50	BLUE	1112	br1	8001/U	50	BLUE	1721
a2	8001/U	130	BLUE	1718	b2	8001/U	130	BLUE	1695	c2	8001/U	50	BLUE	979	d2	8001/U	50	BLUE	1083	br2	8001/U	50	BLUE	1510
a3	8001/U	130	BLUE	1643	b3	8001/U	130	BLUE	1626	c3	8001/U	50	BLUE	928	d3	8001/U	50	BLUE	1029	br3	8001/U	50	BLUE	1446
a4	8001/U	130	BLUE	1607	b4	8001/U	130	BLUE	1552	c4	8001/U	50	BLUE	862	d4	8001/U	50	BLUE	953	br4	8001/U	50	BLUE	851
a5	8001/U	70	BLUE	1018	b5	8001/U	70	BLUE	997	c5	8001/U	50	BLUE	899						br5	8001/U	50	BLUE	704
a6	8001/U	70	BLUE	878	b6	8001/U	70	BLUE	903	c6	8001/U	50	BLUE	812						br6	8001/U	50	BLUE	700
a7	8001/U	70	BLUE	967	b7	8001/U	70	BLUE	898	c7	8001/U	50	BLUE	778						br7	8001/U	50	BLUE	751
a8	8001/U	70	BLUE	905	b8	8001/U	70	BLUE	893	c8	8001/U	50	BLUE	794						br8	8001/U	50	BLUE	678
a9	8001/U	50	BLUE	722	b9	8001/U	50	BLUE	697	c10	8001/U	50	BLUE	1381						br9	8001/U	50	BLUE	552
a10	8001/U	50	BLUE	1317	b10	8001/U	50	BLUE	1316										br10	8001/U	50	BLUE	549	
																				br11	8001/U	50	BLUE	460
2A1	8001/U	130	BLUE	1028	2B1	8001/U	70	BLUE	887	2CD1	8001/U	130	BLUE	533						2BR2	8001/U	50	Blue	737
2A2	8001/U	130	BLUE	842	2B2	8001/U	70	BLUE	846	2CD2	8001/U	130	BLUE	518						2BR3	8001/U	50	BLUE	690
2ST1	8001/U	50	BLUE	699	3B1	8001/U	190	BLUE	2094	2CD3	8001/U	130	BLUE	524						2BR4	8001/U	50	BLUE	578
					3B2	8001/U	130	BLUE	1721	2CD4	8001/U	70	BLUE	481						2BR5	8001/U	50	BLUE	475
										2C5	8001/U	70	BLUE	823						3BR1	8001/U	70	BLUE	2297
										2C6	8001/U	70	BLUE	826						3BR2		70	BLUE	2161
										3C1	8001/U	190	BLUE	1808						3BR3	8001/U	70	BLUE	2335
										3C2	8001/U	130	BLUE	1392										
4A1	TNL	280	GREEN	4114	4B1	TNL	280	BLUE	4035	4C1	TNL	280	BLUE	4282						BRMAIN	TARAX	200	RED	2637
4A2	TNL	280	GREEN	4153	4B2	TNL	280	BLUE	2036	4C2	TNL	280	BLUE	2586						KNOT POINT:				2437
4A3	TNL	280	GREEN	3682	STB	TNL	80	RED	3818															

LINES

HOOK 6 P 22

REF.	MAT.	kg	COLOR	mm	REF.	MAT.	kg	COLOR	mm	REF.	MAT.	kg	COLOR	mm	REF.	MAT.	kg	COLOR	mm	REF.	MAT.	kg	COLOR	mm
A					B					C					D					BRAKE				
a1	8001/U	130	BLUE	1847	b1	8001/U	130	BLUE	1825	c1	8001/U	50	BLUE	1053	d1	8001/U	50	BLUE	1166	br1	8001/U	50	BLUE	1805
a2	8001/U	130	BLUE	1803	b2	8001/U	130	BLUE	1778	c2	8001/U	50	BLUE	1027	d2	8001/U	50	BLUE	1136	br2	8001/U	50	BLUE	1583
a3	8001/U	130	BLUE	1724	b3	8001/U	130	BLUE	1705	c3	8001/U	50	BLUE	974	d3	8001/U	50	BLUE	1079	br3	8001/U	50	BLUE	1516
a4	8001/U	130	BLUE	1686	b4	8001/U	130	BLUE	1628	c4	8001/U	50	BLUE	905	d4	8001/U	50	BLUE	1000	br4	8001/U	50	BLUE	892
a5	8001/U	70	BLUE	1068	b5	8001/U	70	BLUE	1046	c5	8001/U	50	BLUE	943						br5	8001/U	50	BLUE	738
a6	8001/U	70	BLUE	921	b6	8001/U	70	BLUE	947	c6	8001/U	50	BLUE	851						br6	8001/U	50	BLUE	734
a7	8001/U	70	BLUE	1014	b7	8001/U	70	BLUE	942	c7	8001/U	50	BLUE	817						br7	8001/U	50	BLUE	787
a8	8001/U	70	BLUE	948	b8	8001/U	70	BLUE	936	c8	8001/U	50	BLUE	833						br8	8001/U	50	BLUE	706
a9	8001/U	50	BLUE	757	b9	8001/U	50	BLUE	731	c10	8001/U	50	BLUE	1448						br9	8001/U	50	BLUE	574
a10	8001/U	50	BLUE	1381	b10	8001/U	50	BLUE	1380										br10	8001/U	50	BLUE	571	
																			br11	8001/U	50	BLUE	485	
2A1	8001/U	130	BLUE	1078	2B1	8001/U	70	BLUE	930	2CD1	8001/U	130	BLUE	559						2BR2	8001/U	50	Blue	773
2A2	8001/U	130	BLUE	882	2B2	8001/U	70	BLUE	887	2CD2	8001/U	130	BLUE	544						2BR3	8001/U	50	BLUE	724
2ST1	8001/U	50	BLUE	733	3B1	8001/U	190	BLUE	2196	2CD3	8001/U	130	BLUE	550						2BR4	8001/U	50	BLUE	601
					3B2	8001/U	130	BLUE	1804	2CD4	8001/U	70	BLUE	504						2BR5	8001/U	50	BLUE	498
										2C5	8001/U	70	BLUE	864						3BR1	8001/U	70	BLUE	2406
										2C6	8001/U	70	BLUE	865						3BR2		70	BLUE	2263
										3C1	8001/U	190	BLUE	1896						3BR3	8001/U	70	BLUE	2455
										3C2	8001/U	130	BLUE	1459										
4A1	TNL	280	GREEN	4338	4B1	TNL	280	BLUE	4253	4C1	TNL	280	BLUE	4514						BRMAIN	TARAX	200	RED	2741
4A2	TNL	280	GREEN	4379	4B2	TNL	280	BLUE	2159	4C2	TNL	280	BLUE	2735						KNOT POINT:				2541
4A3	TNL	280	GREEN	3885	STB	TNL	80	RED	4026															

LINES

HOOK 6 P 24

REF.	MAT.	kg	COLOR	mm	REF.	MAT.	kg	COLOR	mm	REF.	MAT.	kg	COLOR	mm	REF.	MAT.	kg	COLOR	mm	REF.	MAT.	kg	COLOR	mm
A					B					C					D					BRAKE				
a1	8001/U	130	BLUE	1929	b1	8001/U	130	BLUE	1906	c1	8001/U	50	BLUE	1100	d1	8001/U	50	BLUE	1218	br1	8001/U	50	BLUE	1885
a2	8001/U	130	BLUE	1883	b2	8001/U	130	BLUE	1858	c2	8001/U	50	BLUE	1073	d2	8001/U	50	BLUE	1187	br2	8001/U	50	BLUE	1654
a3	8001/U	130	BLUE	1800	b3	8001/U	130	BLUE	1781	c3	8001/U	50	BLUE	1017	d3	8001/U	50	BLUE	1127	br3	8001/U	50	BLUE	1584
a4	8001/U	130	BLUE	1760	b4	8001/U	130	BLUE	1700	c4	8001/U	50	BLUE	945	d4	8001/U	50	BLUE	1044	br4	8001/U	50	BLUE	932
a5	8001/U	70	BLUE	1115	b5	8001/U	70	BLUE	1092	c5	8001/U	50	BLUE	985						br5	8001/U	50	BLUE	771
a6	8001/U	70	BLUE	961	b6	8001/U	70	BLUE	989	c6	8001/U	50	BLUE	888						br6	8001/U	50	BLUE	767
a7	8001/U	70	BLUE	1059	b7	8001/U	70	BLUE	984	c7	8001/U	50	BLUE	853						br7	8001/U	50	BLUE	822
a8	8001/U	70	BLUE	990	b8	8001/U	70	BLUE	978	c8	8001/U	50	BLUE	870						br8	8001/U	50	BLUE	742
a9	8001/U	50	BLUE	791	b9	8001/U	50	BLUE	763	c10	8001/U	50	BLUE	1512						br9	8001/U	50	BLUE	605
a10	8001/U	50	BLUE	1442	b10	8001/U	50	BLUE	1441										br10	8001/U	50	BLUE	601	
																			br11	8001/U	50	BLUE	503	
2A1	8001/U	130	BLUE	1127	2B1	8001/U	70	BLUE	972	2CD1	8001/U	130	BLUE	584						2BR2	8001/U	50	Blue	807
2A2	8001/U	130	BLUE	920	2B2	8001/U	70	BLUE	926	2CD2	8001/U	130	BLUE	568						2BR3	8001/U	50	BLUE	756
2ST1	8001/U	50	BLUE	766	3B1	8001/U	190	BLUE	2294	2CD3	8001/U	130	BLUE	574						2BR4	8001/U	50	BLUE	633
					3B2	8001/U	130	BLUE	1884	2CD4	8001/U	70	BLUE	525						2BR5	8001/U	50	BLUE	520
										2C5	8001/U	70	BLUE	903						3BR1	8001/U	70	BLUE	2517
										2C6	8001/U	70	BLUE	903						3BR2		70	BLUE	2367
										3C1	8001/U	190	BLUE	1981						3BR3	8001/U	70	BLUE	2558
										3C2	8001/U	130	BLUE	1523										
4A1	TNL	280	GREEN	4552	4B1	TNL	280	BLUE	4462	4C1	TNL	280	BLUE	4735						BRMAIN	TARAX	200	RED	2903
4A2	TNL	280	GREEN	4595	4B2	TNL	280	BLUE	2276	4C2	TNL	280	BLUE	2878						KNOT POINT:				2703
4A3	TNL	280	GREEN	4078	STB	TNL	80	RED	4224															

LINES

HOOK 6 P 26

REF.	MAT.	kg	COLOR	mm	REF.	MAT.	kg	COLOR	mm	REF.	MAT.	kg	COLOR	mm	REF.	MAT.	kg	COLOR	mm	REF.	MAT.	kg	COLOR	mm
A					B					C					D					BRAKE				
a1	8001/U	130	BLUE	2007	b1	8001/U	130	BLUE	1983	c1	8001/U	50	BLUE	1145	d1	8001/U	50	BLUE	1267	br1	8001/U	50	BLUE	1962
a2	8001/U	130	BLUE	1961	b2	8001/U	130	BLUE	1935	c2	8001/U	50	BLUE	1117	d2	8001/U	50	BLUE	1235	br2	8001/U	50	BLUE	1722
a3	8001/U	130	BLUE	1873	b3	8001/U	130	BLUE	1854	c3	8001/U	50	BLUE	1059	d3	8001/U	50	BLUE	1173	br3	8001/U	50	BLUE	1649
a4	8001/U	130	BLUE	1833	b4	8001/U	130	BLUE	1770	c4	8001/U	50	BLUE	983	d4	8001/U	50	BLUE	1087	br4	8001/U	50	BLUE	969
a5	8001/U	70	BLUE	1161	b5	8001/U	70	BLUE	1137	c5	8001/U	50	BLUE	1025						br5	8001/U	50	BLUE	803
a6	8001/U	70	BLUE	1001	b6	8001/U	70	BLUE	1031	c6	8001/U	50	BLUE	925						br6	8001/U	50	BLUE	798
a7	8001/U	70	BLUE	1103	b7	8001/U	70	BLUE	1024	c7	8001/U	50	BLUE	888						br7	8001/U	50	BLUE	857
a8	8001/U	70	BLUE	1031	b8	8001/U	70	BLUE	1018	c8	8001/U	50	BLUE	906						br8	8001/U	50	BLUE	772
a9	8001/U	50	BLUE	823	b9	8001/U	50	BLUE	795	c10	8001/U	50	BLUE	1574						br9	8001/U	50	BLUE	629
a10	8001/U	50	BLUE	1501	b10	8001/U	50	BLUE	1500										br10	8001/U	50	BLUE	626	
																			br11	8001/U	50	BLUE	525	
2A1	8001/U	130	BLUE	1172	2B1	8001/U	70	BLUE	1011	2CD1	8001/U	130	BLUE	607						2BR2	8001/U	50	Blue	840
2A2	8001/U	130	BLUE	959	2B2	8001/U	70	BLUE	965	2CD2	8001/U	130	BLUE	593						2BR3	8001/U	50	BLUE	788
2ST1	8001/U	50	BLUE	797	3B1	8001/U	190	BLUE	2386	2CD3	8001/U	130	BLUE	597						2BR4	8001/U	50	BLUE	659
					3B2	8001/U	130	BLUE	1962	2CD4	8001/U	70	BLUE	548						2BR5	8001/U	50	BLUE	542
										2C5	8001/U	70	BLUE	939						3BR1	8001/U	70	BLUE	2616
										2C6	8001/U	70	BLUE	941						3BR2		70	BLUE	2464
										3C1	8001/U	190	BLUE	2061						3BR3	8001/U	70	BLUE	2665
										3C2	8001/U	130	BLUE	1587										
4A1	TNL	280	GREEN	4758	4B1	TNL	280	BLUE	4664	4C1	TNL	280	BLUE	4949						BRMAIN	TARAX	200	RED	3055
4A2	TNL	280	GREEN	4806	4B2	TNL	280	BLUE	2393	4C2	TNL	280	BLUE	3020						KNOT POINT:				2855
4A3	TNL	280	GREEN	4270	STB	TNL	80	RED	4423															

LINES

HOOK 6 P 28

REF.	MAT.	kg	COLOR	mm	REF.	MAT.	kg	COLOR	mm	REF.	MAT.	kg	COLOR	mm	REF.	MAT.	kg	COLOR	mm	REF.	MAT.	kg	COLOR	mm
A					B					C					D					BRAKE				
a1	8001/U	130	BLUE	2082	b1	8001/U	130	BLUE	2057	c1	8001/U	50	BLUE	1188	d1	8001/U	50	BLUE	1315	br1	8001/U	50	BLUE	2036
a2	8001/U	130	BLUE	2036	b2	8001/U	130	BLUE	2009	c2	8001/U	50	BLUE	1159	d2	8001/U	50	BLUE	1282	br2	8001/U	50	BLUE	1787
a3	8001/U	130	BLUE	1944	b3	8001/U	130	BLUE	1923	c3	8001/U	50	BLUE	1099	d3	8001/U	50	BLUE	1217	br3	8001/U	50	BLUE	1713
a4	8001/U	130	BLUE	1903	b4	8001/U	130	BLUE	1838	c4	8001/U	50	BLUE	1021	d4	8001/U	50	BLUE	1128	br4	8001/U	50	BLUE	1005
a5	8001/U	70	BLUE	1205	b5	8001/U	70	BLUE	1180	c5	8001/U	50	BLUE	1063						br5	8001/U	50	BLUE	833
a6	8001/U	70	BLUE	1039	b6	8001/U	70	BLUE	1070	c6	8001/U	50	BLUE	960						br6	8001/U	50	BLUE	829
a7	8001/U	70	BLUE	1144	b7	8001/U	70	BLUE	1063	c7	8001/U	50	BLUE	921						br7	8001/U	50	BLUE	890
a8	8001/U	70	BLUE	1070	b8	8001/U	70	BLUE	1057	c8	8001/U	50	BLUE	940						br8	8001/U	50	BLUE	801
a9	8001/U	50	BLUE	854	b9	8001/U	50	BLUE	825	c10	8001/U	50	BLUE	1633						br9	8001/U	50	BLUE	653
a10	8001/U	50	BLUE	1558	b10	8001/U	50	BLUE	1556										br10	8001/U	50	BLUE	649	
																			br11	8001/U	50	BLUE	545	
2A1	8001/U	130	BLUE	1216	2B1	8001/U	70	BLUE	1049	2CD1	8001/U	130	BLUE	629						2BR2	8001/U	50	Blue	872
2A2	8001/U	130	BLUE	996	2B2	8001/U	70	BLUE	1003	2CD2	8001/U	130	BLUE	616						2BR3	8001/U	50	BLUE	818
2ST1	8001/U	50	BLUE	827	3B1	8001/U	190	BLUE	2475	2CD3	8001/U	130	BLUE	620						2BR4	8001/U	50	BLUE	683
					3B2	8001/U	130	BLUE	2037	2CD4	8001/U	70	BLUE	569						2BR5	8001/U	50	BLUE	562
										2C5	8001/U	70	BLUE	974						3BR1	8001/U	70	BLUE	2712
										2C6	8001/U	70	BLUE	977						3BR2		70	BLUE	2557
										3C1	8001/U	190	BLUE	2138						3BR3	8001/U	70	BLUE	2769
										3C2	8001/U	130	BLUE	1648										
4A1	TNL	280	GREEN	4956	4B1	TNL	280	BLUE	4857	4C1	TNL	280	BLUE	5154						BRMAIN	TARAX	200	RED	3157
4A2	TNL	280	GREEN	5009	4B2	TNL	280	BLUE	2507	4C2	TNL	280	BLUE	3157						KNOT POINT:				2957
4A3	TNL	280	GREEN	4455	STB	TNL	80	RED	4615															

LINE MEASUREMENTS

HOOK 6 P - 20

LINES HEIGHT MM

	A	B	C	D	br
1	6390	6289	6328	6436	6490
2	6347	6244	6288	6392	6279
3	6311	6256	6343	6444	6215
4	6275	6182	6235	6326	6212
5	6233	6134	6201		6065
6	6093	6040	6114		6014
7	5996	5996	6083		6065
8	5934	5991	6099		6054
9	5755	5730	5718		5928
10	5654	5653			5822
11					5733

RISERS LENGHT MM

	A	A'	B	C	
	500	500	500	500	STANDARD
	380	398	418	500	ACCELERATED

HOOK 6 P - 22

LINES HEIGHT MM

	A	B	C	D	br
1	6700	6593	6635	6748	6787
2	6656	6546	6594	6703	6565
3	6618	6561	6652	6757	6498
4	6580	6484	6538	6633	6495
5	6536	6433	6502		6341
6	6389	6334	6410		6288
7	6286	6288	6377		6341
8	6220	6282	6393		6329
9	6032	6007	5993		6197
10	5926	5926			6091
11					6005

RISERS LENGHT MM

	A	A'	B	C	
	500	500	500	500	STANDARD
	355	380	403	500	ACCELERATED

HOOK 6 P - 24

LINES HEIGHT MM

	A	B	C	D	br
1	6996	6882	6928	7046	7140
2	6950	6834	6885	6999	6909
3	6910	6851	6947	7057	6839
4	6870	6770	6827	6926	6835
5	6825	6717	6790		6674
6	6671	6614	6693		6619
7	6562	6565	6658		6674
8	6493	6559	6675		6662
9	6297	6269	6255		6525
10	6185	6184			6408
11					6310

RISERS LENGHT MM

	A	A'	B	C	
	500	500	500	500	STANDARD
	355	380	403	500	ACCELERATED

LINE MEASUREMENTS

HOOK 6 P - 26

LINES HEIGHT MM

	A	B	C	D	br
1	7280	7162	7210	7332	7468
2	7234	7114	7168	7286	7228
3	7194	7134	7234	7348	7155
4	7154	7050	7110	7214	7154
5	7108	6997	7072		6988
6	6948	6891	6972		6931
7	6837	6840	6937		6990
8	6765	6834	6955		6977
9	6559	6532	6516		6834
10	6443	6443			6714
11					6613

RISERS LENGHT MM

	A	A'	B	C	
	500	500	500	500	STANDARD
	355	380	403	500	ACCELERATED

HOOK 6 P - 28

LINES HEIGHT MM

	A	B	C	D	br
1	7553	7428	7480	7607	7740
2	7507	7380	7438	7561	7491
3	7468	7405	7511	7629	7417
4	7427	7320	7383	7490	7417
5	7381	7266	7343		7245
6	7215	7156	7240		7187
7	7100	7105	7204		7248
8	7026	7099	7223		7236
9	6812	6783	6767		7088
10	6692	6690			6963
11					6859

RISERS LENGHT MM

	A	A'	B	C	
	500	500	500	500	STANDARD
	355	380	403	500	ACCELERATED

SUSPENSION

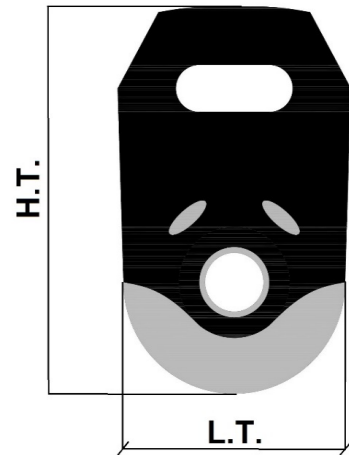
MATERIAL CODE		TNL	TNL	A-8000/U	A-8000/U	A-8000/U	A-8000/U	TARAX
STRENGTH CODE		080	280	050	070	130	190	200
DIAMETER m/m	∅	1,1	1,8	0,5	0,7	0,9	1,1	1,7
CORE MATERIAL		TECHNORA	TECHNORA	ARAMID	ARAMID	ARAMID	ARAMID	Dyneema
SLEEVE MATERIAL		POLYESTER	POLYESTER	NO	NO	NO	NO	Polyester
WEIGHT G/M	TOTAL	1,1	2,7	0,3	0,4	0,8	1,1	2
BREAKING STRENGTH daN	MINIMUM	80	280	50	70	130	190	200
	MAXIMUM	92	320	59	78	144	211	
STRENGTH AFTER								
5.000 BENDING	TEST EN	36,7	134,7	26	39	88	52	
CYCLES								
ELONGATION AT	5 daN en %	0,3	0,2	0,4	0,5	0,4	0,4	0,1-0,3
	10 daN en %	0,5	0,3	0,7	0,7	0,6	0,6	0,2-0,6
	15 daN en %	0,7	0,4	1,1	1	0,8	0,7	0,3-0,7
	20 daN en %	1	0,4	1,5	1,3	0,9	0,9	0,3-0,9
	25 daN en %	1,3	0,5	1,9	1,5	1	1	0,4-1
	30 daN en %	2,3	0,9	3,3	2,8	1,8	1,6	
	75 daN en %	2,8	1,3		3,7	3,1	2,7	0,8-1,7
	100 daN en %		1,7				2,6	1,2-2
	125 daN en %		2				3,5	
	150 daN en %		2,3				4,3	1,6-2,4
	175 daN en %		2,7					
	200 daN en %		2,8					2-2,8
ELONGATION MAX. BREAKING STRENGTH %		3	4,1	3,8	3,9	4	4,4	

PULLEY

DESCRIPTION PULLEY

PULLEY	20 M/M
CODE	RF25109
MATERIALS	STAINLESS STEEL NYLON CARBON ACETAL
BEARING	DELRIN®
WEIGHT	14 G/PIECE

TECHNICAL SPECIFICATIONS



DIMENSIONS	m/m
L.T.	20
H.T.	33
Ø	5 MAX
LOAD	KG
WORKING LIMIT	200
BREAKING	400

THREAD

SAIL MAKING

NAME	SERAFIL
Nº OF REFERENCE	60
MATERIAL	POLYESTER
TYPE OF FINISH	SILK
LINEAR DENSITY	NM 61 / 3 (DTEX 163 * 3)
BREAKING STRENGTH	3,000 CN
ELONGATION	17,00%

PROPIETIES SERAFIL

SOLIDITY ARTIFICIAL LIGTH	ISO 105 B02 > 5 - 6
SOLIDITY SWEAT	ISO 105 E04 > 4
SOLIDITY WASHING	ISO 105 C04 > 3
SOLIDITY GRAZE IN DRY	ISO 105 X12 > 4
SOLIDITY WASHING IN DRY	ISO 105 D01 > 3 - 4

TREATMENT WATER REPELLENT	WR
---------------------------	----

RISERS MAKING

NOMBRE	COATS BONDED C.F.P.
Nº DE REFERENCIA	V138
MATERIAL	POLYESTER
ACABADO	SILK
RESISTENCIA A LA TRACCIÓN	9,5 KG
ELONGACIÓN	19%

RISERS

RISERS

REFERENCIA	3455
MATERIAL	POLYESTER & TECHNORA
ANCHO	12 mm
GRUESO	2,25 mm
RESISTENCIA A LA TRACCIÓN	1.100 DAN
ALARGAMIENTO	MAX. 11%
PESO	21,1 G/M
COLOR	BLACK

COLOR INDICATOR

REFERENCIA	IC-G 1-2
MATERIAL	POLYESTER
ANCHO	70 M/M
GRUESO	0,80 M/M
RESISTENCIA A LA TRACCIÓN	130 DN
ALARGAMIENTO	35 %
PESO	32 G * L.M.
COLOR	GREEN

LOOPS

REFERENCIA	LKI - 10
MATERIAL	NYLON
ANCHO	10 M/M
RESISTENCIA A LA TRACCIÓN	84 KG
ALARGAMIENTO	30 %
PESO	5,5 G/M
COLOR	WHITE



Niviuk Paragliders

C/ Del Ter 6 - nave D

17165 La Celler de Ter - Girona - Spain

+34 972 422 878 | info@niviuk.com

www.niviuk.com