

HOOK 6 P

User *manual*



PIVIUK BEYOND
THE GLIDE

HOOK 6 P



PROGRESSION



HIKE & FLY

FLY WITHOUT LIMITS

WELCOME

We welcome you to our team and thank you for the trust you have placed in us by choosing a Niviuk paraglider.

We would like you to share the enthusiasm with which we have created this paraglider and the importance and care with which we have developed the design and manufacture of this new model. All this, in order to be able to offer you the maximum pleasure in every flight under a Niviuk paraglider.

The HOOK 6 P is an accessible and stable progression glider that will allow you to advance in all your flights and encourage you to experience new adventures.

We are confident you will enjoy flying this glider and will soon discover the meaning of our motto:

“The importance of small details to make great things happen”.

This is the user manual and we recommend you read it carefully.



USER MANUAL

This manual provides you with the necessary information on the main characteristics of your new paraglider.

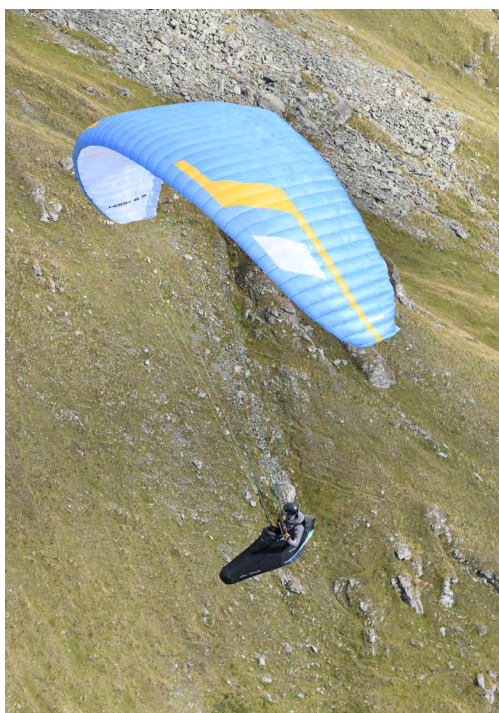
Whilst it provides information on the wing, it cannot be viewed as an instructional handbook and does not offer the training required to fly this type of paraglider. Training can only be undertaken at a certified paragliding school and each country has its own system of licensing.

Only the aeronautical authorities of respective countries can determine pilot competence.

The information in this manual is provided in order to warn you against adverse flying situations and potential dangers.

Equally, we would like to remind you that it is important to carefully read all the contents of your new HOOK 6 P manual.

Misuse of this equipment could lead to severe injuries or death. The manufacturers and dealers cannot be held responsible for misuse of the paraglider. It is the responsibility of the pilot to ensure the equipment is used correctly.



CONTENTS

1. CHARACTERISTICS	4	7.4 REPAIRS	14
1.1 WHO IS IT DESIGNED FOR?.....	4	8. SAFETY AND RESPONSIBILITY	15
1.2 CERTIFICATION.....	4	9. GARANTEE	15
1.3 IN-FLIGHT BEHAVIOR.....	4	10. ANNEXES	16
1.4 CONSTRUCTION, MATERIALS, TECHNOLOGIES.....	5	10.1 TECHNICAL DATA.....	16
1.5 ELEMENTS, COMPONENTS.....	6	10.2 MATERIALS DESCRIPTION.....	17
2. UNPACKING AND ASSEMBLY	7	10.3 RISER PLAN.....	18
2.1 CHOOSING THE RIGHT LOCATION.....	7	10.4 LINE PLAN.....	19
2.2 PROCEDURE.....	7	10.5 LINE LENGTHS HOOK 6 P 20.....	20
2.3 CONNECTING THE HARNESS.....	7	10.6 LINE LENGTHS HOOK 6 P 22.....	20
2.4 HARNESS TYPE.....	7	10.7 LINE LENGTHS HOOK 6 P 24.....	20
2.5 SPEED-BAR.....	7	10.8 LINE LENGTHS HOOK 6 P 26.....	21
2.6 INSPECTION AND WING INFLATION ON THE GROUND.....	8	10.9 LINE LENGTHS HOOK 6 P 28.....	21
2.7 ADJUSTING THE BRAKES.....	8	10.11 CERTIFICATION.....	22
3. THE FIRST FLIGHT	9		
3.1 CHOOSING THE RIGHT LOCATION.....	9		
3.2 PREPARATION.....	9		
3.3 FLIGHT PLAN.....	9		
3.4 PRE-FLIGHT CHECK.....	9		
3.5 WING INFLATION, CONTROL AND TAKEOFF.....	9		
3.6 LANDING.....	9		
3.7 PACKING.....	9		
4. IN FLIGHT	10		
4.1 FLYING IN TURBULENCE.....	10		
4.2 POSSIBLE CONFIGURATIONS.....	10		
4.3 ACCELERATED FLIGHT.....	11		
4.4 FLYING WITHOUT BRAKE LINES.....	11		
4.5 LINE KNOT(S) IN FLIGHT.....	12		
5. LOSING ALTITUDE	12		
5.1 BIG EARS.....	12		
5.2 B-LINE STALL.....	12		
5.3 SPIRAL DIVE.....	12		
5.4 SLOW DESCENT TECHNIQUE.....	13		
6. SPECIAL METHODS	13		
6.1 TOWING.....	13		
6.2 ACROBATIC FLIGHT.....	13		
7. CARE AND MAINTENANCE	13		
7.1 MAINTENANCE.....	13		
7.2 STORAGE.....	14		
7.3 CHECKS AND INSPECTIONS.....	14		

CHARACTERISTICS

1.1 WHO IS IT DESIGNED FOR?

The new HOOK 6 P is a very intuitive, stable and safe glider, offering better performance and efficiency than the previous model. Ideal for progression, as well as trying out new flying disciplines. It features optimised handling to enhance the pilot's flying experience, discover new routes and have the confidence to forget about piloting.

The wing has the ability to take off from any location without complications. Its light weight will allow you to climb to the top comfortably with a compact, easy to carry and fold glider. Enjoy different adventures combining mountaineering with flying.

1.2 CERTIFICATION

The HOOK 6 P has been submitted for the European EN and LTF certification. All certification tests were performed at the Swiss testing house Air Turquoise. All sizes passed the load, shock and flight tests.

The load test proved that the wing can withstand the stipulated 8G.

The shock test proved that the wing can resist 800 daN of force.

The flight test resulted in the following certification of the HOOK 6 P for size 20:

EN B
LTF B

The flight test resulted in the following certification of the HOOK 6 P for all other sizes (22, 24, 26 and 28):

EN A+
LTF A+

We recommend that only pilots who are familiar with gliders of this certification or above fly this paraglider.

Only the aeronautical authorities of respective countries can determine pilot competence.

We recommend pilots read the flight test report carefully, especially the comments of the test pilot. The report contains all the necessary information on how the paraglider reacts during each of the tested manoeuvres.

It is important to note that different size wings will react differently during manoeuvres. Even within the same size, at maximum or minimum load, the behaviour and reactions of the wing may vary.

- Description of flight characteristics of LTF/EN A paragliders: paragliders with maximum passive safety and extremely forgiving flight characteristics. Gliders with good collapse resistance in normal flight.
- Description of the skills required by the pilot to fly an EN A wing: designed for all pilots, including pilots under instruction.
- Description of EN B class wing characteristics: Paragliders with a high degree of passive safety and very forgiving flight characteristics. Gliders with high collapse resistance outside normal flight.

- Description of the skills required by the pilot to fly an EN B wing: Designed for all pilots, including pilots at all levels of training and qualification.

For further information on the flight test and the corresponding certification, please see the final pages of this manual or see or visit the Downloads section at www.niviuk.com

1.3 IN-FLIGHT BEHAVIOUR

Niviuk developed this wing by adopting very specific goals: to improve performance, excellent handling, to make flying easier for the pilot.

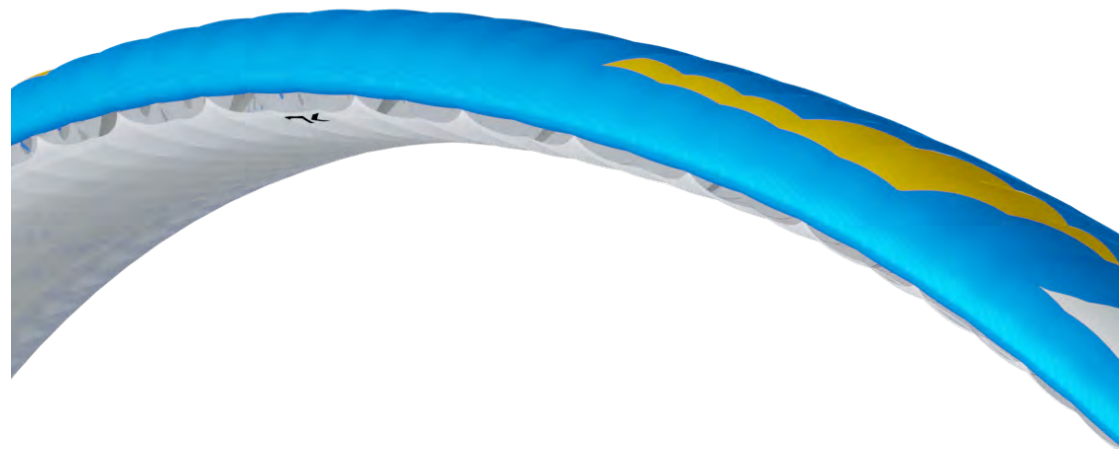
To increase performance while maintaining the highest level of safety. To ensure that the wing transmits the maximum feedback in an understandable and comfortable way so that the pilot can focus on piloting and enjoying the flight. And, with active piloting, take advantage of all favourable conditions.

In all aspects of flight, the wing is very solid and stable. The glide is smooth, even when fully accelerated. During glides, the wing maintains altitude and the wing remains stable. Improved turn precision means handling is less physical and provides better feedback. Inflating the wing is much easier and gentler, without overshooting.

Flying this wing is very intuitive, with clear and useful feedback about the airmass. It responds to the pilot's inputs effectively and even in thermic and turbulent conditions it remains stable and solid.

The HOOK 6 P flies efficiently. It enters thermals with sufficient speed to centre in the lift and climbs progressively. The handling is progressive and effective for even more flying pleasure under an exciting wing of extraordinary quality.

It is lightweight; even lighter in flight and easy to pilot, with outstanding turbulence buffering and a surprising range of speed for incredible glides.



1.4 CONSTRUCTION, MATERIALS, TECHNOLOGIES.

The HOOK 6 P benefits from all the construction and assembly techniques used in our factory. It has all the current technology and accessories available to improve pilot comfort whilst increasing safety and performance.

In the design of all Niviuk products the team aims to ensure development and continuous improvement. The technologies developed in recent years have allowed us to develop greater, better wings. It is in this context that we would like to introduce the technologies included in this new model:

RAM Air Intake - this system is characterised by the arrangement of the air inlets, to ensure optimal maintenance of internal pressure. Thanks to this design, we were able to reduce their size, while maintaining the same air flow at all angles to improve laminar flow. More consistency across the whole speed range and better performance without compromising on safety.

Titanium Technology (TNT) – a revolutionary technique using titanium. Using Nitinol in the internal construction provides a more uniform profile and reduces the weight to gain efficiency in flight. Nitinol provides the highest level of protection against deformation, heat or breaks.

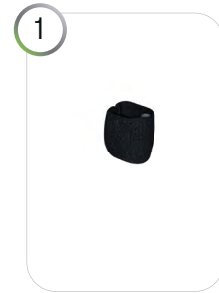
Structural Leading Edge (SLE) - provides more rigidity and stability along the span of leading edge but also allows full flexibility along the both the vertical and horizontal axis. A reduction in the amount of Mylar, in comparison to previous profiles, has resulted in less weight which makes it easier to inflate the wing.

3D Pattern Cut Optimisation (3DP) – the latest generation of wings require a new fabric panel pattern and cutting system. Creating separate panels for each of the sections at the front of the wing means the sail fabric is more taut and crease-free. During the cutting, the optimal orientation of the fabric section is selected, depending on its final location. If the fabric pattern is properly aligned with the axes of load, it suffers less deformation after repeated use, to the long-term benefit of the leading edge.

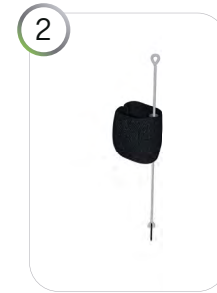
3D Leading Edge (3DL) - adding an extra reinforced seam to the leading edge helps to ensure more consistency and volume in the profile. This provides a more efficient 3D contour.

Interlock System (IKS) – the IKS is a connection system that allows the risers to be connected to different parts of the wing, such as the lines or the harness. The IKS technology is a step towards greater lightness in wings and equipment, without sacrificing effectiveness and providing the same degree of safety and strength.

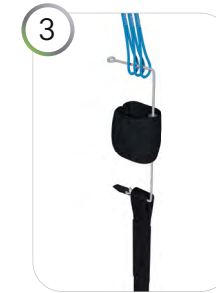
IKS1000 is included in the pack.



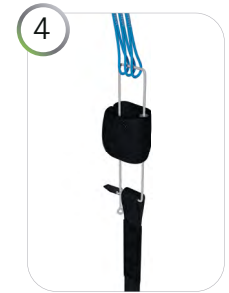
1
Locate the elastic sleeve's inner small diameter tube.



2
Push the IKS line through it.



3
Push now the IKS line through the lines and the riser. The reinforced end with the black tab should be located on the riser side.



4
Push the upper looped end downward through the elastic sleeve (not small diameter tube) and then through the reinforced loop end where the black tab is located.



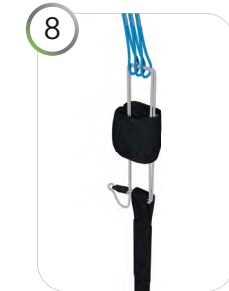
5
Continue with the procedure in a counterclockwise motion by pushing the looped end through the riser.



6
Push the looped end first upward through the elastic sleeve (not small diameter tube) and through the lines again following the same pattern.



7
Push the looped end downward through the elastic sleeve (not small diameter tube) first, and then through the loop with the reinforced end (black tab) once more.



8
Push the reinforced end loop (black tab) through the looped end to secure them together.



9
Pull tight to secure the knot and connection.



10
Check the entire assembly.

Drag Reduction Structure (DRS) – the trailing edge has been reinforced with small ribs in order to distribute the pressure more evenly. This results in excellent manoeuvrability and greater control and precision.

Radial Sliced Diagonal (RSD) – a reinvention of the wing's internal structure. This new design is based on individual diagonal panels arranged in radial form, which increase the efficiency of the internal structure considerably.

The use of these technologies is a big technological leap forward in building wings and a big improvement in flight comfort.

For the construction process of the HOOK 6 P we use the same criteria, quality controls and manufacturing processes as in the rest of our range. From Olivier Nef's computer to fabric cutting, the operation does not allow for even a millimetre of error. The cutting of each wing component is performed by a rigorous, extremely meticulous, automated computer laser-cutting robotic arm.

This program also paints the guideline markers and numbers on each individual fabric piece, thus avoiding errors during this delicate process.

The jigsaw puzzle assembly is made easier using this method and optimises the operation while making the quality control more efficient. All Niviuk gliders go through an extremely thorough and detailed final inspection. The canopy is cut and assembled under strict quality control conditions facilitated by the automation of this process.

Every wing is individually checked with a final visual inspection.

The fabric used to manufacture the glider is light, resistant and durable. The fabric will not experience fading and is covered by our warranty.

The main lines are made from Technora with a polyester sheath, and the gallery lines are made from unsheathed Aramid.

The line diameter has been calculated depending on the workload and aims to achieve the required best performance with the least drag. The sheath protects the line cores from UV rays and abrasions.

The lines are semi-automatically cut to length and all the sewing is completed under the supervision of our specialists.

Every line is checked and measured once the final assembly is concluded.

Each glider is packed following specific maintenance instructions as recommended by the fabric manufacturer.

Niviuk gliders are made of premium materials that meet the requirements of performance, durability and certification that the current market demands.

Information about the various materials used to manufacture the wing can be viewed in the final pages of this manual.



1.5 ELEMENTS, COMPONENTS

The HOOK 6 P is delivered with a series of accessories that will greatly assist you in the maintenance of your paraglider:

- An inner bag to protect the wing during storage and transport.
- An adjustable compression strap to compress the inner bag and reduce its volume.
- A riser protector, which will prevent metal parts from coming into contact with the cloth during storage.
- A repair kit with self-adhesive Ripstop tape and spare parts to protect the maillons.
- A Kargo bag. It is not included in the pack, but we recommend to get it. This bag is large enough to hold all equipment comfortably and with plenty of space.

UNPACKING AND ASSEMBLY

2.1 CHOOSING THE RIGHT LOCATION

We recommend unpacking and assembling the wing on a training hill or a flat clear area without too much wind and free of obstacles. It will help you to carry out all the recommended steps required to check and inflate the HOOK 6 P.

We recommend the whole installation procedure is supervised by a qualified professional instructor or official dealer. Only they can address any doubts in a safe and professional way.



2.2 PROCEDURE

Take the paraglider out of the rucksack, open and unfold it on the ground with the lines positioned on the undersurface, oriented in the direction of inflation. Check the condition of the fabric and the lines for defects. Check the maillons/IKS connecting the lines to the risers to make sure they are fully closed and tightened. Identify, and if necessary, untangle, the A, B and C-lines, the brake lines and corresponding risers. Make sure that there are no knots.

2.3 CONNECTING THE HARNESS

The HOOK 6 P risers are colour-coded.

- Right: green
- Left: red

This colour-coding makes it easier to connect the wing to the correct side and helps prevent pre-flight errors.

Correctly connect the risers to the attachment points so that the risers and lines are correctly ordered and free of twists. Check that the IKS and carabiners are properly fastened and securely locked.

2.4 HARNESS TYPE

The HOOK 6 P can be flown with all current harness types. We recommend setting the chest strap to the distance specified in the certification report – this will vary depending on size. See the certification certificate.

Care should be taken with the chest strap setting, as the distance of the chest strap setting will affect the handling of the glider. If the chest strap is too wide, it allows greater feedback but this carries the risk of affecting the stability of the wing.

If the chest strap is set too tightly, the wing feels more solid, but there is a loss of feedback and a risk of twisting in the case of a violent asymmetric collapse.

2.5 SPEED-BAR

The speed-bar is a means of temporary acceleration by changing the flow over the profile. The speed system comes pre-installed on the risers and is not modifiable as it conforms to the measurements and limits stipulated in its certification.

The HOOK 6 P includes a speed system with maximum travel depending on its size (see Full speed-bar).

The speed system is engaged when the pilot pushes the speed-bar (not included as standard with this glider model) with their feet (see 2.5.1 Speed system assembly).

The speed system uses an action/reaction system. Released, the speed-bar is set to neutral. When the bar is pushed using the feet, the wing accelerates. The speed can be regulated by varying the pressure on the bar. Once the pressure on the bar is released, the speed system returns to the neutral setting.

The speed system is efficient, sensitive and precise. The pilot can use the system whenever they want during the flight. In the neutral position the glider will fly at the standard speed and glide. Using full speed-bar, the wing will fly at maximum speed, but the glide will be adversely affected.

- Released speed-bar: the A, B, C-risers are aligned.
- Full speed-bar: the difference between the A - C-risers becomes:
 - Size 20– 120 mm
 - Sizes 22, 24, 26, 28 – 145 mm



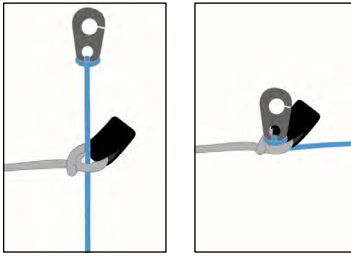
Please note!

The use of the speed system results in changes to the speed and reactions of the wing. For more information, please see the certification report.

2.5.1 SPEED SYSTEM ASSEMBLY

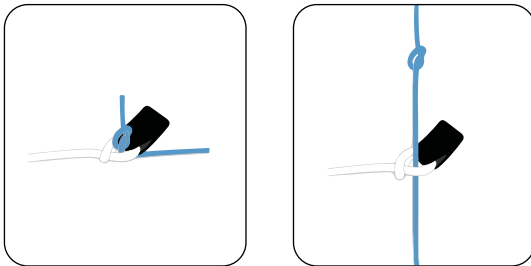
The speed-bar consists of the bar that the pilot pushes with their feet, as well as the two cords that connect it to the speed system components on the risers. Once you have chosen the type of speed-bar you prefer, you must install it. Some considerations:

- You should use the type of speed-bar you consider appropriate, depending on the type of harness, personal preferences, etc.
- The speed-bar is detachable to facilitate its connection and / or disconnection to the risers as well as subsequent adjustment.
- To connect it to the harness, please follow the instructions of the harness manufacturer. The majority of harnesses have a speed system pre-installed.
- The standard connection of the speed-bar to the speed system is via Brummel hooks, where two slots in the hooks are interlocked, making their connection / disconnection easy. However, any connection system that is safe may be used.



Plume (P) models – please note

The P models were designed with the idea of saving weight across the entire equipment. To achieve this, Niviuk decided to deliver the wings without the classic Brummel hooks and opting for a kite-style knotting system. This system offers the same efficiency and safety as the classic Brummel hooks, but with much less weight.



1. Make a knot in the speed-bar cord and pass this through the cord connections on the risers.
2. Apply tension to both sides until the knots are locked tightly in the riser connections.

The system or procedure for connecting the kite knot is exactly the same as the Brummel hooks and can be used in other systems or connection elements.

2.5.2 CHANGING THE RISER CORDS

In spite of the speed system having pulleys with bearings to reduce friction to a minimum, the frequency with which the speed-bar is used causes the cord to wear and you may need to replace them.

In all Niviuk gliders the speed system cords on the risers are completely removable and easily replaceable. You can use the Brummel hooks, not use them, remove them, use another type of connector, etc. It is even possible to fix the speed-bar cords directly to the speed system on the risers. This last option makes the connection / disconnection more laborious, but means the cord has maximum travel without obstructions or restrictions which is very useful for some models of harnesses.

2.6 INSPECTION AND WING INFLATION ON THE GROUND

After your gear has been thoroughly checked and the weather conditions deemed favourable for flying, inflate your HOOK 6 P as many times as necessary to familiarise yourself with its behaviour. Inflating the HOOK 6 P is easy and should not require a great deal of physical effort. Inflate the wing with a little pressure from the body using the harness. This may be assisted by using the A-lines. Do not pull on them; just accompany the natural rising movement of the wing. Once the wing is inflated to the overhead position, appropriate control with the brakes will be sufficient to hold it there.

2.7 ADJUSTING THE BRAKES

The length of the main brake lines are adjusted at the factory and conform to the length stipulated during certification. However, they can be changed to suit your flying style. It is advisable to fly with the original setting for a period of time to get used to the actual behaviour of the HOOK 6 P. In case it is necessary to modify the brake length, loosen the knot, slide the line through the brake handle to the desired point and



re-tighten the knot firmly. Only qualified personnel should carry out this adjustment. You must ensure that the modification does not affect the trailing edge and slow the glider down without pilot input. Both brake lines should be symmetrical and the same length. We recommend using a clove hitch or bowline knot.

When changing the brake length, it is necessary to check that they do not engage when the speed-bar is used. When we accelerate, the glider rotates over the C-riser and the trailing edge elevates. It is important to check that the brake is adjusted to take into consideration this extra distance during acceleration. With this profile deformation there is a risk of generating turbulence and causing a frontal or asymmetric collapse.

THE FIRST FLIGHT

3.1 CHOOSING THE RIGHT LOCATION

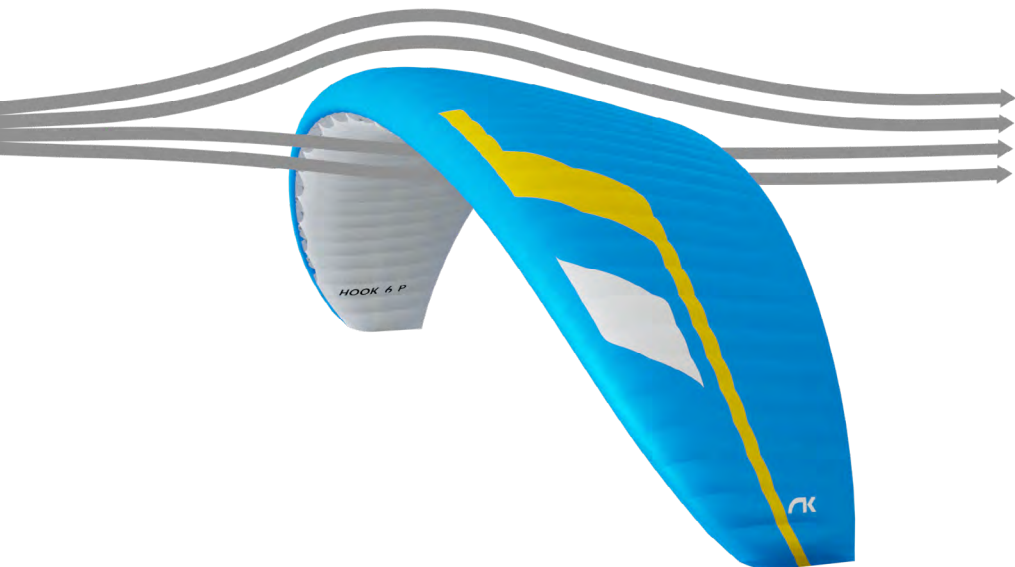
For the first flight we recommend going to your usual flying area and that a qualified instructor is present and supervising the entire procedure.

3.2 PREPARATION

Repeat the procedures detailed in section 2 UNPACKING AND ASSEMBLY to prepare your equipment.

3.3 FLIGHT PLAN

Planning a flight before taking off to avoid possible problems later is always a good idea.



3.4 PRE-FLIGHT CHECK

Once ready, but before taking off, conduct another equipment inspection. Conduct a thorough visual check of your gear with the wing fully open, the lines untangled and properly laid out on the ground to ensure that all is in working order. Be certain the weather conditions are suited to your flying skill level.

3.5 WING INFLATION, CONTROL AND TAKEOFF

The HOOK 6 P comes up easily, without requiring additional energy, and does not overfly you. It is a straightforward exercise, leaving enough time for you to decide whether to accelerate and take off or not.

If the wind permits, we recommend a reverse launch, as this allows a better visual inspection of the wing during inflation. In "strong" winds, the HOOK 6 P is especially easy to control using this launch technique. Winds of 25 to 30 km/h are considered strong for paragliding.

Correctly setting up the wing on the ground before takeoff is especially important. Choose an appropriate location facing the wind. Position the paraglider in a crescent configuration to facilitate inflation. A clean wing layout will ensure a trouble-free take off.

3.6 LANDING

The HOOK 6 P lands excellently, it converts the wing speed into lift at your demand, allowing an enormous margin of error. Wrapping the brake lines around your hand to get greater braking efficiency is not necessary.

3.7 PACKING

The HOOK 6 P has a complex leading edge, manufactured using a variety of different materials and it must be packed carefully. A correct folding method is very important to extend the useful life of your paraglider.

It should be concertina-packed, with the leading edge reinforcements flat and the flexible rods stacked one on top of the other. This method will keep the profile in its original shape and protect the integrity of the wing over time. Make sure the reinforcements are not bent or folded. It should not be folded too tightly to avoid damage to the cloth and/or lines.

At Niviuk we have designed the NKare Bag, a bag designed to assist you with rapid packing which helps maintain the integrity of the leading edge and its internal structures in perfect condition.

The NKare Bag guides you through the folding process, allowing you to concertina pack the wing with each rod on top of the other and then fold the wing as required. This folding system ensures that both the fabric and the reinforcements of the internal structure are kept in perfect condition.

IN FLIGHT

We recommend that you read the certification test report.

The report contains all the necessary information on the HOOK 6 P reacts during each of the tested manoeuvres.

It is important to point out that the appropriate response to each adverse manoeuvre can vary from size to size; even within the same size at maximum or minimum load the behaviour and reactions of the wing may vary.

Having the knowledge that the testing house provides through the test report is fundamental to learning how to deal with possible situations.

To become familiar with the manoeuvres described below, we recommend practising within the auspices of a licensed training outfit.

4.1 FLYING IN TURBULENCE

The HOOK 6 P has an excellent profile to deal with incidents; it is very stable in all conditions and has a high degree of passive safety, even in turbulent conditions.

All paragliders must be piloted for the prevailing conditions and the pilot is the ultimate safety factor.

We recommend active flying in turbulent conditions, always taking measures to maintain control of the wing, preventing it from collapsing and restoring the speed required by the wing after each correction.

Do not correct the glider (braking) for too long in case this provokes a stall. If you have to take corrective action, make the input then re-establish the correct flying speed.

4.2 POSSIBLE CONFIGURATIONS

To become familiar with the manoeuvres described below, we recommend practising within the environment of a licensed training outfit. You must adapt your use of the brakes depending on the wing-loading and avoid over-steering.

It is important to note that the type of reaction to a manoeuvre can vary from one size of wing to another, and even within the same size the behaviour and reactions may be different depending on the wing-loading.

In the test report, you will find all the necessary information on how to handle your new wing during each of the tested manoeuvres. Having this information is crucial to know how to react during these manoeuvres in real flight, so you can deal with these situations as safely as possible.

Asymmetric collapse

In spite of the HOOK 6 P's profile stability, strong turbulent air may cause the wing to collapse asymmetrically in very strong turbulence, especially if you do not fly actively and prevent the collapse. In this case the glider conveys a loss of pressure through the brake lines and the harness. To prevent the collapse from happening, pull the brake handle on the affected side of the wing. It will increase the incidence of the wing (angle of attack). If the collapse does happen, the HOOK 6 P will not react violently, the turning tendency is gradual



and easily controlled. Weight-shift toward the open, flying side (the opposite side of the collapse) to keep the wing flying straight, while applying light brake pressure to that side if necessary. Normally, the collapsed side of the wing should then recover and reopen by itself. If it does not, try to weight-shift towards the open side. If this does not resolve the issue, pull the brake handle on the collapsed side decisively and quickly all the way (100%) down and release it back up immediately. You may have to repeat this action to provoke the re-opening of the collapsed glider side. Do not over-brake or slow down the flying side of the wing (control the turn). Once the collapsed side is open make sure you return to normal flying speed.

Frontal collapse

Due to the HOOK 6 P's design, in normal flying conditions frontal collapses are unlikely to take place. The wing's profile has great buffering abilities when dealing with extreme incidence changes. A frontal collapse may occur in strong turbulent conditions, entering or exiting powerful thermals. Frontal collapses usually re-inflate without the glider turning, but a symmetrically applied quick braking action with a quick deep pump of both brakes will accelerate the re-inflation if necessary. Release the brake lines immediately to return to default glider air speed.

Negative spin

A negative spin does not conform to the HOOK 6 P's normal flight behaviour. Certain circumstances however, may provoke a negative spin (such as trying to turn when flying at very low air speed whilst applying a lot of brake). It is not easy to give any specific recommendation about this situation other than quickly restoring the wing's default air speed and angle of attack by progressively reducing the tension on the brake lines. The normal wing reaction will be to have a lateral surge on the re-accelerated side with a rotation not greater than 360° before returning to default air speed and a straight flight path trajectory.

Parachutal stall

The possibility of entering or remaining in a parachutal stall have been eliminated from the HOOK 6 P.

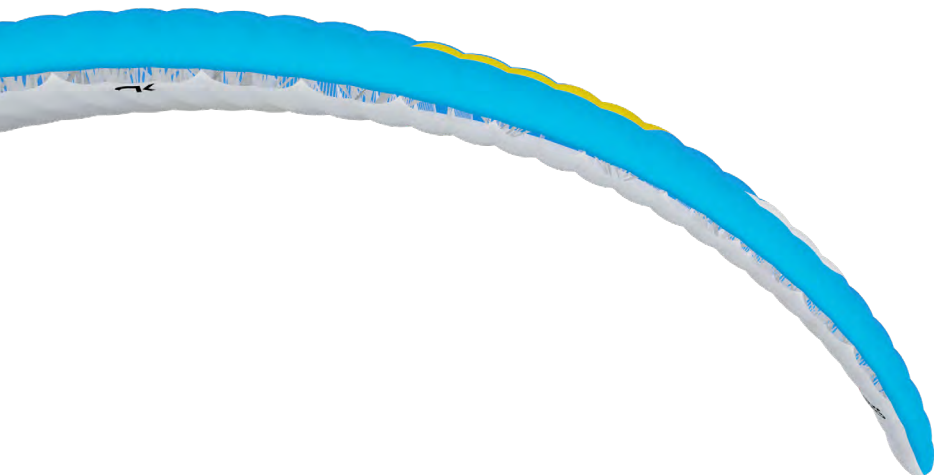
A parachutal stall is virtually impossible with this wing. If it did enter into a parachutal stall, the wing loses forward motion, becomes unstable and there is a lack of pressure on the brake lines, although the canopy appears to be fully inflated. To regain normal air speed, release brake line tension symmetrically and manually push on the A-lines or weight-shift your body to any side WITHOUT PULLING ON THE BRAKE LINES.

Deep Stall

The possibility of the HOOK 6 P stalling during normal flight is very unlikely. It could only happen if you are flying at a very low air speed, whilst over-steering or performing dangerous manoeuvres in turbulent air.

To provoke a deep stall, the wing has to be slowed down to its minimum air speed by symmetrically pulling the brake lines all the way (100%) down until the stall point is reached and held there. The glider will first pitch rearward and then reposition itself overhead, rocking slightly, depending on how the manoeuvre is done. When entering a stall, remain clear-headed and ease off the brake lines until reaching the half-way point of the total brake travel. The wing will then surge violently forward and could reach a point below you. It is most important to maintain brake pressure until the glider has returned to its default overhead flying position.

To resume normal flight conditions, progressively and symmetrically release the brake line tension to regain air speed. When the wing reaches the overhead position, the brakes must be fully released. The wing will then surge forward to regain full air speed. Do not brake excessively at this moment as the wing needs to accelerate to pull away from the stall configuration. If you have to control a possible frontal collapse, briefly pull both brake handles down to bring the wing back up and release them immediately while the glider is still in transition to reposition itself overhead.



Cravat

A cravat may happen after an asymmetric collapse, when the end of the wing is trapped between the lines. Depending on the nature of the tangle, this situation could rapidly cause the wing to spin. The corrective manoeuvres to use are the same as those applied in case of an asymmetric collapse: control the turn/spin by applying tension on the opposite brake and weight shift opposite to the turn. Then locate the 3STI stabilo line (attached to the wing tip) trapped between the other lines. This line has a different colour and is located on the outside position of the B-riser.

Pull this line until it is taut. This action will help to release the cravat. If ineffective, fly down to the nearest possible landing spot, controlling the direction with both weight-shift and the use of the brake opposite to the tangled side. Be cautious when attempting to undo a tangle while flying near terrain or other paragliders; it may not be possible to continue on the intended flight path.

Over-controlling

Most flying problems are caused by wrong pilot input, which then escalates into a cascade of unwanted and unpredicted incidents. We should note that the wrong inputs can lead to loss of control of the glider. The HOOK 6 P was designed to recover by itself in most cases. Do not try to over-correct it!

Generally speaking, the reactions of the wing, which are caused by too much input, are due to the length of time the pilot continues to over-control the wing. You have to allow the glider to re-establish normal flying speed and attitude after any type of incident.

4.3 ACCELERATED FLIGHT

The HOOK 6 P's profile was designed for stable flight throughout its entire speed range. The speed-bar can be used in strong winds or significant sink.

When accelerating the wing, the profile becomes more sensitive to turbulence and closer to a possible frontal collapse. If a loss in internal wing pressure is felt, tension on the speed-bar should be reduced to a minimum and a slight pull on the brake lines is recommended to increase the wing's incidence angle. Remember to re-establish the air speed after correcting the angle of attack.

It is NOT recommended to accelerate near obstacles or in very turbulent conditions. If necessary, constantly adjust the movements and pressure on the speed-bar whilst doing the same to the brake lines. This balance is considered to be 'active piloting'.

4.4 FLYING WITHOUT BRAKE LINES

If, for any reason at all, the HOOK 6 P's brake lines become disabled in flight, it will become necessary to pilot the wing with the C-risers and weight shifting until landing. These risers steer easily because are not under significant tension. You will have to be careful and not handle them too heavily in case this causes a stall or negative spin. The wing must be flown at full speed (not accelerated) during the landing approach, and the C-risers will have to be pulled symmetrically all the way down shortly before contact with the ground. This braking method is not as effective as using the brake lines, and hence the wing will land with a higher ground speed.

4.5 LINE KNOT(S) IN FLIGHT

The best way to avoid knots and tangles is to thoroughly inspect the lines as part of a systematic pre-flight check. If a knot is spotted during the take off phase, immediately abort the launch sequence and stop.

If inadvertently taking off with a knotted line, the glider drift will need to be compensated by weight-shifting to the opposite side and applying a slight brake pull to that side. Gently pull the brake line to see if the knot can be undone or try to locate the problem line. Try pulling it to see if the knot can be undone. Beware of trying to clear a knotted line or untangle a line in flight when close to the terrain. If the knot is too tight and cannot be undone, carefully and safely fly to the nearest landing zone. Be careful: do not pull too hard on the brake handles because there will be an increased risk of stalling the wing or entering a negative spin. Before attempting to clear a knot, make sure there are no other pilots flying in the vicinity.

LOSING ALTITUDE

Knowledge of different descent techniques could become vital in certain situations. The most suitable descent method will depend on the particular situation.

To become familiar with the manoeuvres described below, we recommend practising within the environment of a licensed training outfit.

5.1 BIG EARS

The “Big ears” is a moderate descent technique, able to increase the sink rate to -3 or -4 m/s and reduces the ground speed by 3 to 5 km/h. The angle of attack and effective wing-loading will also increase due to the smaller surface area of the wing.

To perform the ‘Big ears’ manoeuvre, take the A’ line on each A-riser (the 4A3 line on the HOOK 6 P) and simultaneously, smoothly pull them outward and downward. The wingtips will fold in.

To re-establish forward speed and the correct angle of attack, accelerate once the ears are pulled.

Keep the ears pulled in until you have lost the desired altitude.

Let go of the lines to re-inflate the tips automatically. If they do not, try progressively pulling one brake then the other. Asymmetric reopening is recommended in order to avoid compromising the angle of attack, particularly flying near the ground or in turbulent conditions.

5.2 B-LINE STALL

When carrying out this manoeuvre, the wing stops flying, loses all horizontal speed and the pilot is no longer in control of the paraglider.

The airflow over the profile is interrupted and the wing enters a situation similar to parachuting.

To enter this manoeuvre, the B-risers are gripped below the maillons and symmetrically pulled down together (approx. 20–30 cm) and maintained in that position.



Initiating the maneuver is physically demanding because it can take some strength to pull the risers down until the wing is deformed. After this, the physical effort is less. Continue to hold the risers in position.

Once the wing is deformed, its horizontal speed will drop to 0 km/h; vertical descending speed increases to -6 to -8 m/s, depending on the conditions and how the manoeuvre is performed.

To exit the manoeuvre, simultaneously release both risers. The wing will then slightly surge forward and automatically return to normal flight. It is better to let go of the lines quickly rather than slowly.

This is an easy descent technique to perform, but remember that the wing will stop flying, will lose all forward horizontal speed, and its reactions will change markedly when compared to a normal flight configuration.

5.3 SPIRAL DIVE

This is a more effective way to rapidly lose altitude. Beware that the wing will experience and be subjected to a tremendous amount of descending and rotating speed (g-force), which can cause a loss of orientation and consciousness (blackout). This manoeuvre must therefore be done gradually to increase one’s capacity to resist the g-force exerted on the body. With practise, you will fully appreciate and understand it. Only practise this manoeuvre at high altitude and with enough ground clearance.

To start the manoeuvre, first weight shift and pull the brake handle located on the inner side of the turn. The intensity of the turn can be controlled by braking slightly using the outer brake handle.

A paraglider flying at its maximum rotating speed can reach -20 m/s, or the equivalent of a 70 km/h vertical descent, and will stabilise in a spiral dive from 15m/s onwards. Good enough reasons to familiarise yourself with the manoeuvre and understand how to exit it.

To exit this manoeuvre, the inner brake handle (down side of the turn) must progressively be relaxed while momentarily applying tension to the outer brake handle opposite to the turn. The pilot must also weight shift and lean towards the opposite side of the turn at the same time.

The exit should be performed gradually and smoothly so that the changes in pressure and speed can be noted.

When exiting the spiral, the glider will briefly experience an asymmetrical acceleration and dive, depending on how the manoeuvre was carried out.

Practise these manoeuvres at sufficient altitude and carefully.

5.4 SLOW DESCENT TECHNIQUE

This technique allows descent without straining the wing or taxing the pilot. Glide normally while searching for descending air and begin to turn as if climbing in a thermal, but with the intention to sink.

Common sense has to be used to avoid dangerous areas of rotor when looking for descending air. Safety first!

SPECIAL METHODS

6.1 TOWING

The HOOK 6 P does not experience any problem whilst being towed. Only qualified winch personnel should handle the certified equipment to carry out this operation. The wing must be inflated similarly as during a normal take off.

It is important to use the brakes to correct the flight path alignment, especially in the first phase of the tow. Since the wing is subject to a slow airspeed and with a high positive angle of attack, we must make any corrections with a high degree of feel and delicacy, in order to avoid a stall.



6.2 ACROBATIC FLIGHT

Although the HOOK 6 P was tested by expert acrobatic pilots in extreme situations, it was not designed for it. We do not recommend using this glider for acrobatic flying!!!

We consider acrobatic flights to be any form of piloting different than standard flights. Learning acrobatic manoeuvres should be conducted under the supervision of qualified instructors within a school environment and over water with all safety/rescue elements in place. Centrifugal forces as high as 4 to 5 g can be exerted on the body and wing during extreme manoeuvres.

CARE AND MAINTENANCE

7.1 MAINTENANCE

Careful maintenance of your equipment will ensure continued top performance. Apart from the general checks, we recommend actively maintaining your equipment.

A pre-flight check is obligatory before each flight.

If there is any damage to the equipment or you suspect any areas of the wing are susceptible to wear, you should inspect these and act accordingly.

Niviuk we are firmly committed to make technology accessible to all pilots. Therefore, our wings are equipped with the latest technological advances gained from the experience of our R&D team. Thanks to these new technologies, paragliders are gaining more safety and performance, which requires greater care of the materials.



IMPORTANT: it is critical to avoid any kind of impact or dragging the leading edge on the ground. This part is reinforced with very durable and strong Nitinol rods that can be easily replaced. Dragging and/or hitting the leading edge can cause serious damage to the fabric, which is much more complicated and costly to repair.

The fabric and the lines do not need to be washed. If they become dirty, clean them with a soft damp cloth, using only water. Do not use detergents or other chemicals.

If your wing is wet from contact with water, place it in a dry area, air it and keep it away from direct sunlight.

Direct sunlight may damage the wing's materials and cause premature aging. After landing, do not leave the wing exposed to the sun. Pack it properly and stow it away in its backpack.

If you fly in sandy areas, avoid getting sand in the cells or down into the trailing edge. At the end of the flight, empty any sand that is in your wing. The openings at the end of the wingtips make this much easier.

If your wing is wet from contact with salt water, immerse it in fresh water and dry it away from direct sunlight.

7.2 STORAGE

It is important for the wing to be correctly folded when stored. Keep it in the in a cool, dry place away from solvents, fuels, oils.

Do not leave your gear inside a car boot, as cars left in the sun can become very hot. A rucksack can reach temperatures up to 60°C.

Weight should not be laid on top of the equipment.

It is very important to pack the wing correctly before storage.

In case of long-term storage, it is advisable, if possible, that the wing is not compressed and it should be stored loosely without direct contact with the ground. Humidity and heating can have an adverse effect on the equipment.

7.3 CHECKS AND INSPECTIONS

Inspections

The HOOK 6 P must be periodically serviced. An inspection must be scheduled every 100 flying hours or every two years whichever comes first (EN/LTF norm).

We strongly recommend that any repairs should be done in a specialist repair shop by qualified personnel.

This will guarantee the airworthiness and continued certification of your HOOK 6 P.

A thorough pre-flight check must be performed before every flight.

Checking unsheathed lines

The HOOK 6 P is fitted with unsheathed lines. Their durability conforms to unsheathed line standards. Their strength is guaranteed and their resistance to UV is one of the highest in this type of lines.

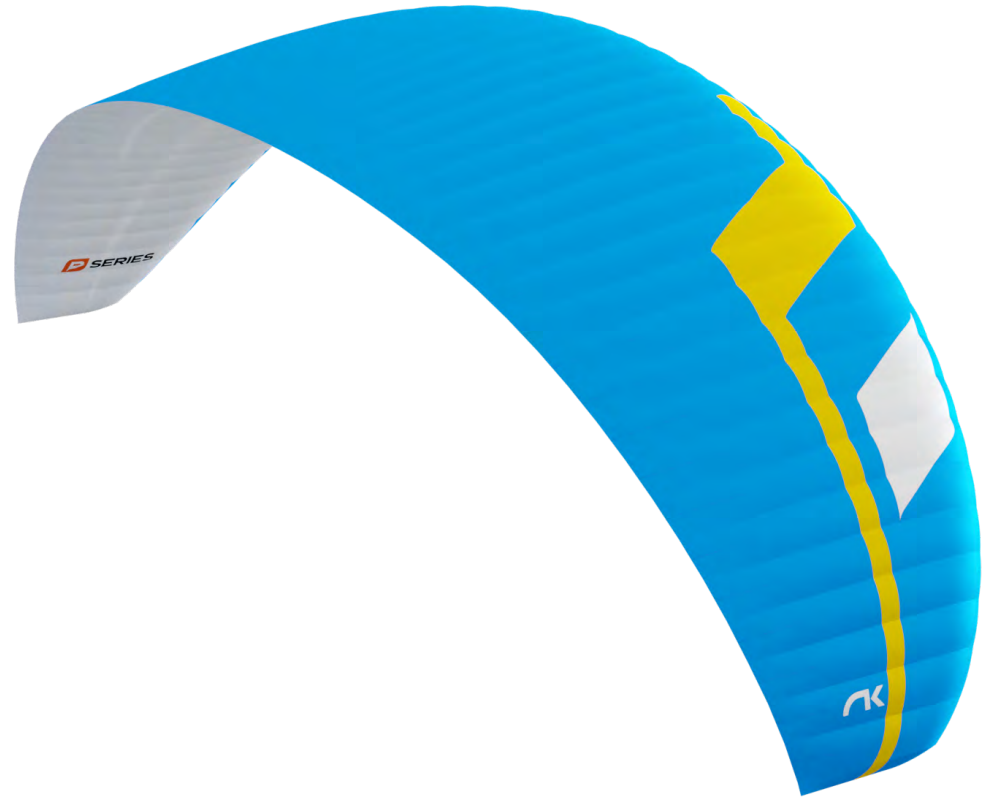
7.4 REPAIRS

In the case of small tears, you can temporarily repair these by using the Ripstop tape included in the repair kit, as long as no stitching is required to mend the fabric. Any other tears or repairs should be done in a specialist repair shop by qualified personnel.

Damaged lines must be repaired or exchanged immediately. Please refer to the line plan at the end of this manual.

We recommend any inspection or repair is performed by a Niviuk professional in our official workshop:
<https://niviuk.com/en/niviuk-service-form>

Any modification of the glider made in an external workshop will invalidate the guarantee of the product. Niviuk cannot be held responsible for any issues or damage resulting from modifications or repairs carried out by unqualified professionals or who are not approved by the manufacturer.



SAFETY AND RESPONSIBILITY

It is well known that free-flying with a paramotor or trike is considered a high-risk sport, where safety depends on the person who is practicing it.

Incorrect use of this equipment may cause severe, life-changing injuries to the pilot, or even death.

Manufacturers and dealers cannot be held responsible for your decisions, actions or accidents that may result from participating in this sport.

You must not use this equipment if you have not been properly trained to use it. Do not take advice or accept any informal training from anyone who is not properly qualified as a flight instructor.

GUARANTEE

The equipment and components are covered by a 2-year warranty against any manufacturing defect.

The warranty does not cover misuse of the equipment.

Any modification to the paraglider or its components invalidates the guarantee and the certification.

If you notice a fault or defect on your paraglider, contact Niviuk immediately for a full inspection.



ANNEXES

TECHNICAL DATA

			20	22	24	26	28
CELLS	NUMBER		47	47	47	47	47
ASPECT RATIO	FLAT		5,3	5,3	5,3	5,3	5,3
AREA	FLAT	m2	20	22	24	26	28
	PROJECTED	m2	17,15	18,87	20,59	22,3	24,02
SPAN	FLAT	m	10,3	10,8	11,28	11,74	12,18
CHORD	MAXIMUM	m	2,43	2,55	2,66	2,77	2,87
LINES	NUMBER	m	205	215	226	235	244
	MAIN		2-1/3/2	2-1/3/2	2-1/3/2	2-1/3/2	2-1/3/2
RISERS	NUMBER	3+1	A-A'/B/C	A-A'/B/C	A-A'/B/C	A-A'/B/C	A-A'/B/C
	SPEED-BAR	mm	145	145	145	145	145
GLIDER WEIGHT		kg	55-70	60-80	70-92	80-105	95-120
TOTAL WEIGHT IN FLIGHT		kg	3,15	3,4	3,68	3,95	4,3
CERTIFICATION	EN / LTF		B	A+	A+	A+	A+

COLORS



AMBER



BREEZE



DISKUS

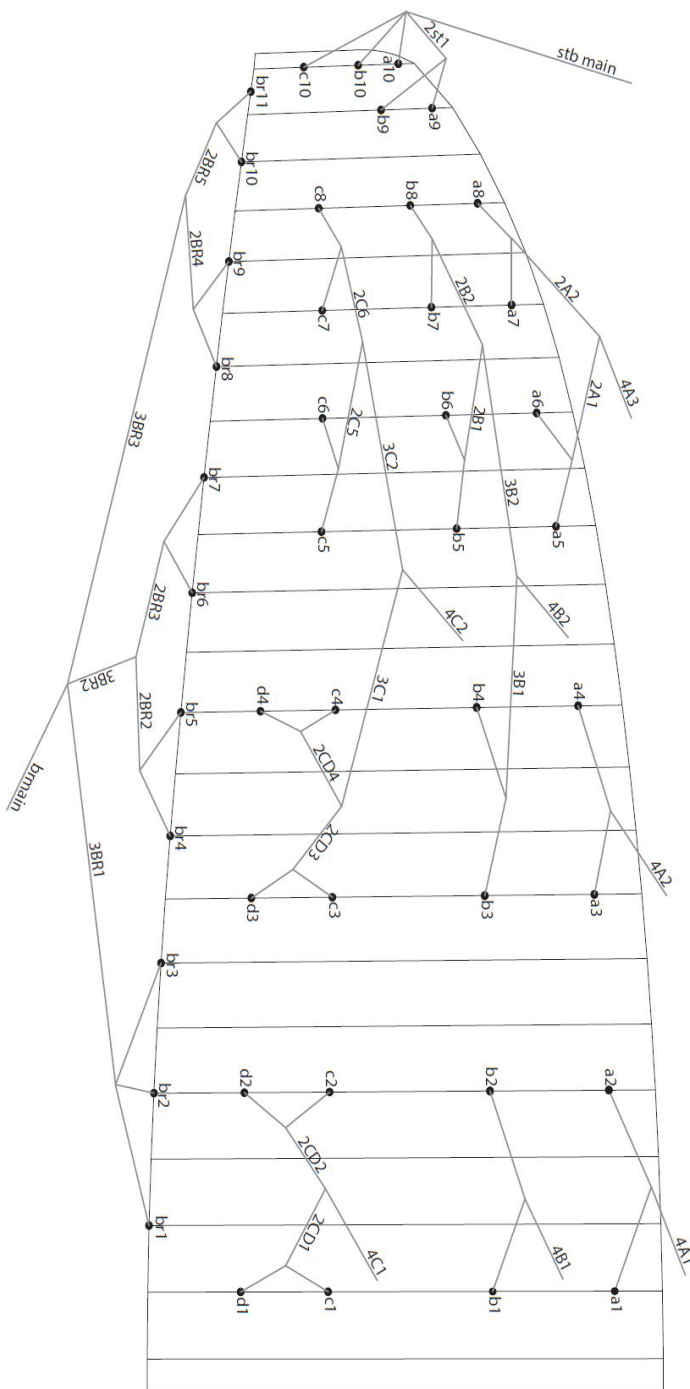
MATERIALS DESCRIPTION

CANOPY	FABRIC CODE	SUPPLIER
UPPER SURFACE	204432PS	DOMINICO TEX CO (Korea)
BOTTOM SURFACE	70000 E3H	PORCHER SPORT (France)
PROFILES	70000 E91 / 2044-32FM	PORCHER SPORT (France) / DOMINICO TEX CO (Korea)
DIAGONALS	70000 E91 / D30 / 2044-32FM	PORCHER SPORT (France) / DOMINICO TEX CO (Korea)
LOOPS	LKI - 12	KOLON IND. (KOREA)
REINFORCEMENT LOOPS	RIPSTOP FABRIC	DOMINICO TEX CO (Korea)
TRAILING EDGE REINFORCEMENT	MYLAR	D-P (GERMANY)
RIBS REINFORCEMENT	LTN-0.8/0.5 STICK	SPORTWARE CO.CHINA
THREAD	SERAFIL 60	AMAN (GERMANY)

SUSPENSION LINES	FABRIC CODE	SUPPLIER
UPPER CASCADES	A-8001/U 50	EDELRID (GERMANY)
UPPER CASCADES	A-8001/U 70	EDELRID (GERMANY)
UPPER CASCADES	A-8001/U 130	EDELRID (GERMANY)
MIDDLE CASCADES	A-8001/U 50	EDELRID (GERMANY)
MIDDLE CASCADES	A-8001/U 70	EDELRID (GERMANY)
MIDDLE CASCADES	A-8001/U 130	EDELRID (GERMANY)
MIDDLE CASCADES	A-8001/U 190	EDELRID (GERMANY)
MAIN	TNL-80	TEIJIM LIMITED (JAPAN)
MAIN	TNL-280	TEIJIM LIMITED (JAPAN)
MAIN BREAK	TARAX-200	EDELRID (GERMANY)
THREAD	SERAFIL 60	AMAN (GERMANY)

RISERS	FABRIC CODE	SUPPLIER
MATERIAL	3455	COUSIN (FRANCE)
COLOR INDICATOR	210D	TECNI SANGLES (FRANCE)
THREAD	V138	COATS (ENGLAND)
MAILLONS	3.5	ANSUNG PRECISION (KOREA)
PULLEYS	SB15	RONSTAN (AUSTRALIA)

RISER PLAN



LINE REPLACEMENT

The use of new high performance materials in modern wings is now common. The advantages of using these materials in terms of performance are widely acknowledged as part of our sport's evolution. However, along with those technological advances come additional responsibilities which cannot be avoided. As a result, line inspection and replacement must be carried out more frequently. That increased frequency appears to be encouraging some pilots to try to perform line replacement themselves.

WE STRONGLY RECOMMEND ANY LINE REPLACEMENT IS PERFORMED BY AN AUTHORISED SPECIALIST ONLY.

Ultimately, if the pilot decides to perform any line replacement without professional oversight they therefore assume all responsibility. In this case, these guidelines will have to be followed.

BEFORE REMOVING ANY LINES, CHECK:

- That the line plan is correct according to the glider model and size.
- That the line kit is complete and correct.
- Never assume but always check each individual line for the correct specification.

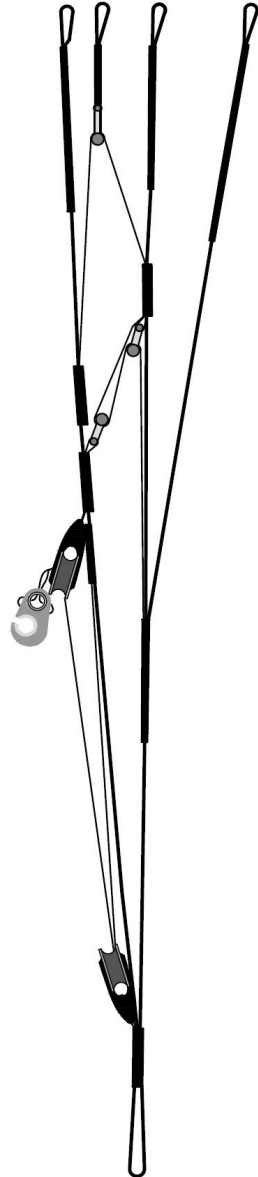
AFTER CONFIRMING THAT ALL LINES ARE CORRECT:

- Fit the new line(s) WITHOUT removing the label.
- Once replaced, measure each line length to confirm the correct measurement.
- Inflate the wing to check for any irregularities.
- The line labels may then be removed but NOT BEFORE completion of the line replacement.

Niviuk strongly recommends for any line replacement to be carried out by an authorised professional only, and will not accept responsibility for any damage or injury caused as a result of incorrect re-assembly.

LINE PLAN

A	A'	B	C
4A1	4A3	4B1	4C1
4A2		4B2	4C2
		stb main	



HOOK 6 P 20

	A	B	C	D	BR
1	6390	6289	6328	6436	6490
2	6347	6244	6288	6392	6279
3	6311	6256	6343	6444	6215
4	6275	6182	6235	6326	6212
5	6233	6134	6201		6065
6	6093	6040	6114		6014
7	5996	5996	6083		6065
8	5934	5991	6099		6054
9	5755	5730	5718		5928
10	5654	5653			5822
11					5733

RISERS LENGHT mm

A	A'	B	C	
500	500	500	500	STANDARD
380	398	418	500	ACCELERATED

HOOK 6 P 22

	A	B	C	D	BR
1	6700	6593	6635	6748	6787
2	6656	6546	6594	6703	6565
3	6618	6561	6652	6757	6498
4	6580	6484	6538	6633	6495
5	6536	6433	6502		6341
6	6389	6334	6410		6288
7	6286	6288	6377		6341
8	6220	6282	6393		6329
9	6032	6007	5993		6197
10	5926	5926			6091
11					6005

RISERS LENGHT mm

A	A'	B	C	
500	500	500	500	STANDARD
355	380	403	500	ACCELERATED

HOOK 6 P 24

	A	B	C	D	BR
1	6996	6882	6928	7046	7140
2	6950	6834	6885	6999	6909
3	6910	6851	6947	7057	6839
4	6870	6770	6827	6926	6835
5	6825	6717	6790		6674
6	6671	6614	6693		6619
7	6562	6565	6658		6674
8	6493	6559	6675		6662
9	6297	6269	6255		6525
10	6185	6184			6408
11					6310

RISERS LENGHT mm

A	A'	B	C	
500	500	500	500	STANDARD
355	380	403	500	ACCELERATED

HOOK 6 P 26

	A	B	C	D	BR
1	7280	7162	7210	7332	7468
2	7234	7114	7168	7286	7228
3	7194	7134	7234	7348	7155
4	7154	7050	7110	7214	7154
5	7108	6997	7072		6988
6	6948	6891	6972		6931
7	6837	6840	6937		6990
8	6765	6834	6955		6977
9	6559	6532	6516		6834
10	6443	6443			6714
11					6613

RISERS LENGHT mm

A	A'	B	C	
500	500	500	500	STANDARD
355	380	403	500	ACCELERATED

HOOK 6 P 28

	A	B	C	D	BR
1	7553	7428	7480	7607	7740
2	7507	7380	7438	7561	7491
3	7468	7405	7511	7629	7417
4	7427	7320	7383	7490	7417
5	7381	7266	7343		7245
6	7215	7156	7240		7187
7	7100	7105	7204		7248
8	7026	7099	7223		7236
9	6812	6783	6767		7088
10	6692	6690			6963
11					6859

RISERS LENGHT mm

A	A'	B	C	
500	500	500	500	STANDARD
355	380	403	500	ACCELERATED

CERTIFICATION

TURQUOISE SA | PARA-TEST.COM
 rue du Pré-au-Comte 8 • CH-1844 Villeneuve • +41 (0)21 965 65 65

laboratory for paragliders, paraglider harnesses
 paraglider reserve parachutes



Classification: **B**

Conformance with standards EN 926-2:2013+A1:2021 and NF 2-20
 Date of issue (DMY):

PG_2045.2022
 27.09.2022

Manufacturer:

Niviuk Gliders / Air Games S.L.

Model:

Hook 6 P 20

Serial number:

HOOK6P201

Configuration during flight tests

Glider		Accessories	
Minimum weight in flight (kg)	70	Range of speed system (cm)	13.7
Maximum weight in flight (kg)	55	Speed range using brakes (km/h)	14
Pilot's weight (kg)	3.2	Total speed range with accessories (km/h)	25
Number of risers	3+1	Range of trimmers (cm)	0
Projected area (m ²)	17.15		

Person used for testing (max weight)

Person type	Person brand	Person model	Person to risers distance (cm)	Distance between risers (cm)
ABS	Woody Valley	Wani Light 2 M	43	40
Inspections (whichever happens first) every 100 hours of use or every 24 months (whichever happens first) Warning! Before use refer to user's manual Person or company having presented the glider for testing: None				

2 3 4 5 6 7 8 9 10 11 12 13 14 15 16 17 18 19 20 21 22 23
A A A A A A A A A A A B A A A A A A A A 0

TURQUOISE SA | PARA-TEST.COM
 rue du Pré-au-Comte 8 • CH-1844 Villeneuve • +41 (0)21 965 65 65

laboratory for paragliders, paraglider harnesses
 paraglider reserve parachutes



Classification: **A**

Conformance with standards EN 926-2:2013+A1:2021 and NF 2-20
 Date of issue (DMY):

PG_2046.2022
 27.09.2022

Manufacturer:

Niviuk Gliders / Air Games S.L.

Model:

Hook 6 P 22

Serial number:

HOOK6P221

Configuration during flight tests

Glider		Accessories	
Minimum weight in flight (kg)	80	Range of speed system (cm)	16.6
Maximum weight in flight (kg)	60	Speed range using brakes (km/h)	14
Pilot's weight (kg)	3.4	Total speed range with accessories (km/h)	25
Number of risers	3+1	Range of trimmers (cm)	0
Projected area (m ²)	18.87		

Person used for testing (max weight)

Person type	Person brand	Person model	Person to risers distance (cm)	Distance between risers (cm)
ABS	Advance	Success 4 M	43	44
Inspections (whichever happens first) every 100 hours of use or every 24 months (whichever happens first) Warning! Before use refer to user's manual Person or company having presented the glider for testing: None				

2 3 4 5 6 7 8 9 10 11 12 13 14 15 16 17 18 19 20 21 22 23
A 0

CERTIFICATION

TURQUOISE SA | PARA-TEST.COM

15000 Route de Pré-au-Comte 8 • CH-1844 Villeneuve • +41 (0)21 965 65 65

laboratory for paragliders, paraglider harnesses
paraglider reserve parachutes



Classification: **A**

Conformance with standards EN 926-1, EN 926-2:2013+A1:2021 and NF L 2-20
Date of issue (DMY):

Manufacturer:

Model:

Serial number:

PG_2043.2022

27.09.2022

Niviuk Gliders / Air Games S.L.

Hook 6 P 24

HOOK6P241

Configuration during flight tests

Glider		Accessories	
Minimum weight in flight (kg)	92	Range of speed system (cm)	16.7
Maximum weight in flight (kg)	70	Speed range using brakes (km/h)	14
Pilot's weight (kg)	3.7	Total speed range with accessories (km/h)	25
Number of risers	3+1	Range of trimmers (cm)	0
Projected area (m ²)	20.59		

Person used for testing (max weight)

Person type	Person brand	Person model	Person to risers distance (cm)	Distance between risers (cm)
ABS	Advance	Success 4 M	43	44
Inspections (whichever happens first) every 100 hours of use or every 24 months (whichever happens first) Warning! Before use refer to user's manual Person or company having presented the glider for testing: None				

2 3 4 5 6 7 8 9 10 11 12 13 14 15 16 17 18 19 20 21 22 23
A 0

TURQUOISE SA | PARA-TEST.COM

15000 Route de Pré-au-Comte 8 • CH-1844 Villeneuve • +41 (0)21 965 65 65

laboratory for paragliders, paraglider harnesses
paraglider reserve parachutes



Classification: **A**

Conformance with standards EN 926-1, EN 926-2:2013+A1:2021 and NF L 2-20
Date of issue (DMY):

Manufacturer:

Model:

Serial number:

PG_2047.2022

27.09.2022

Niviuk Gliders / Air Games S.L.

Hook 6 P 26

HOOK6P261

Configuration during flight tests

Glider		Accessories	
Minimum weight in flight (kg)	105	Range of speed system (cm)	16.9
Maximum weight in flight (kg)	80	Speed range using brakes (km/h)	14
Pilot's weight (kg)	4	Total speed range with accessories (km/h)	25
Number of risers	3+1	Range of trimmers (cm)	0
Projected area (m ²)	22.3		

Person used for testing (max weight)

Person type	Person brand	Person model	Person to risers distance (cm)	Distance between risers (cm)
ABS	Dudek	Zero Gravity M	43	46
Inspections (whichever happens first) every 100 hours of use or every 24 months (whichever happens first) Warning! Before use refer to user's manual Person or company having presented the glider for testing: None				

2 3 4 5 6 7 8 9 10 11 12 13 14 15 16 17 18 19 20 21 22 23
A 0

CERTIFICATION

TURQUOISE SA | PARA-TEST.COM

10000 Route de Pré-au-Comte 8 • CH-1844 Villeneuve • +41 (0)21 965 65 65

Laboratory for paragliders, paraglider harnesses
paraglider reserve parachutes



Classification: **A**

Conformance with standards EN 926-1:2015, EN 926-2:2013+A1:2021 and Nfl. 2-2015
Date of issue (DMY):

PG_2048.2022

27.09.2022

Manufacturer:

Niviuk Gliders / Air Games S.L.

Model:

Hook 6 P 28

Serial number:

HOOK6P281

Configuration during flight tests

Paraglider

Minimum weight in flight (kg) **120**
Maximum weight in flight (kg) **95**
Pilot's weight (kg) **4.3**
Number of risers **3+1**
Projected area (m²) **24.02**

Accessories

Range of speed system (cm) **16.1**
Speed range using brakes (km/h) **14**
Total speed range with accessories (km/h) **25**
Range of trimmers (cm) **0**

Paraglider used for testing (max weight)

Paraglider type **ABS**
Paraglider brand **Supair**
Paraglider model **Evo XC 3 L**
Distance between risers (cm) **44**
Distance between risers (cm) **48**

Inspections (whichever happens first)

every 100 hours of use or every 24 months (whichever happens first)
Warning! Before use refer to user's manual
Person or company having presented the glider for testing: **None**

2 3 4 5 6 7 8 9 10 11 12 13 14 15 16 17 18 19 20 21 22 23
A 0



Niviuk Paragliders

C/ Del Ter 6 - D

17165 La Cellera de Ter - Girona - Spain

+34 972 422 878 | info@niviuk.com

niviuk.com