

ARTIK R

Technical *specifications*



TECHNICAL SPECIFICATIONS

			21	23	25	27	29
Cells	Number		64	64	64	64	64
Aspect ratio	Flat		6,5	6,5	6,5	6,5	6,5
	Projected		4,97	4,97	4,97	4,97	4,97
Area	Flat	m2	21,5	23	24,5	26,5	29
	Projected	m2	18,36	19,64	20,92	22,63	24,76
Span	Flat	m	11,68	12,23	12,75	13,25	13,73
Chord	Max	m	2,31	2,39	2,47	2,57	2,69
Lines	Total	m	198	205	212	221	231
	Main		2-1/3	2-1/3	2-1/3	2-1/3	2-1/3
Risers	Number	2+1	A-A'/B	A-A'/B	A-A'/B	A-A'/B	A-A'/B
	Speed-bar	mm	150	150	170	170	170
Glider weight		kg	4,35	4,55	4,77	5,1	5,5
Total weight in flight	Min-Max	kg	65-85	80-95	90-105	100-120	110-135
Opt. weight in flight	Min-Max	kg	77-82	87-92	97-102	110-115	123-128
Certification			EN C	EN C	EN C	EN C	EN C

The total weight of the wing may differ $\pm 2\%$ due to variations in the weight of the fabric supplied by the manufacturers.



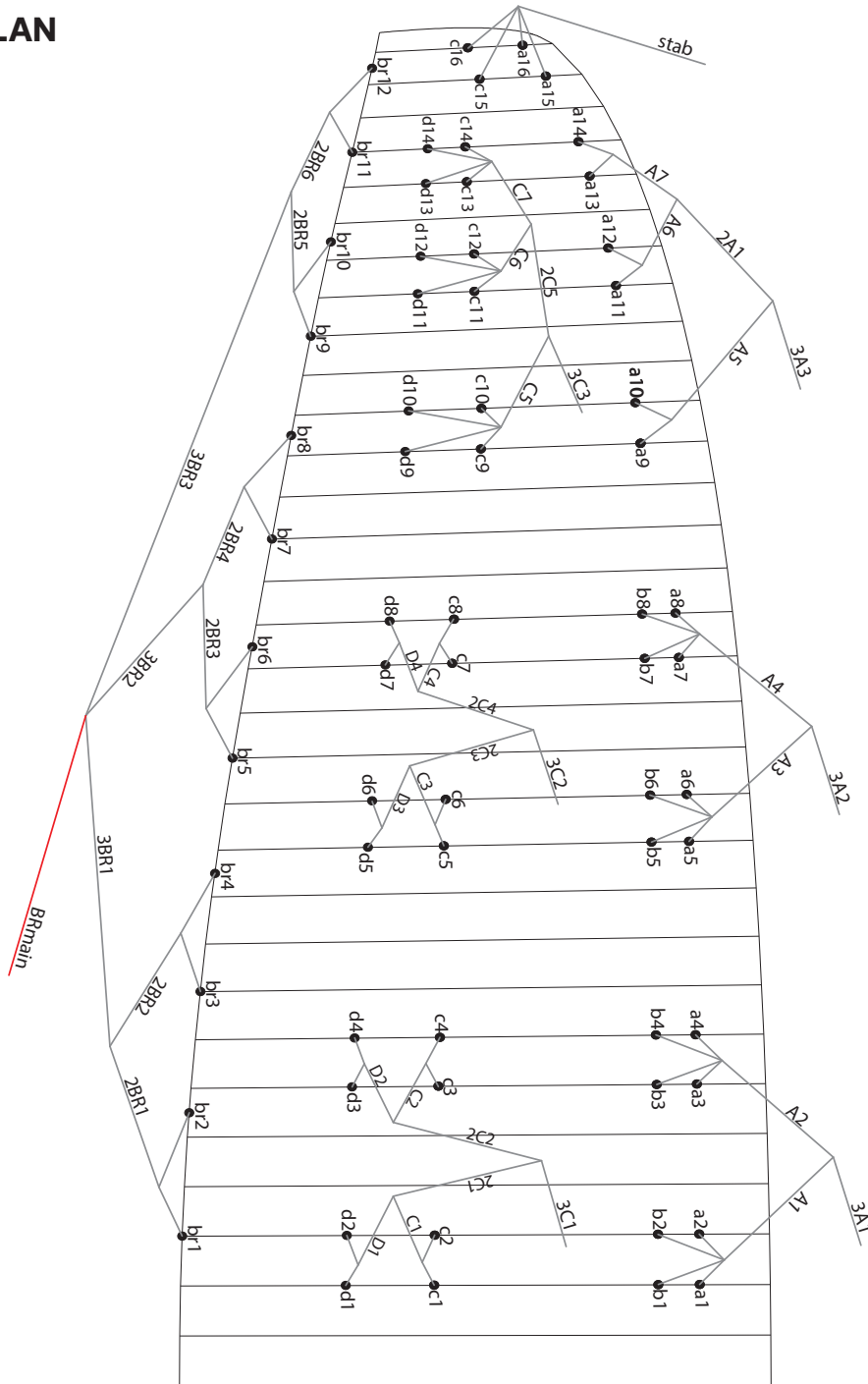
MATERIALS

CANOPY	FABRIC CODE	SUPPLIER
UPPER SURFACE	30 DMF / N20 DMF	DOMINICO TEX CO (KOREA)
BOTTOM SURFACE	70000 E3H	PORCHER IND (FRANCE)
PROFILES	30 DFM / 2044 32 FM	DOMINICO TEX CO (KOREA)
DIAGONALS	30 DFM	DOMINICO TEX CO (KOREA)
LOOPS	LKI - 10	KOLON IND. (KOREA)
REINFORCEMENT LOOPS	RIPSTOP FABRIC	DOMINICO TEX CO (KOREA)
TRAILING EDGE REINFORCEMENT	MYLAR	D-P (GERMANY)
RIBS REINFORCEMENT	LTN-0.8 STICK	SPORTWARE CO.CHINA
THREAD	SERAFIL 60	AMAN (GERMANY)

SUSPENSION LINES	FABRIC CODE	SUPPLIER
UPPER CASCADES	DC - 40	LIROS GMHB (GERMANY)
UPPER CASCADES	A-8001/U 50	EDELRID (GERMANY)
UPPER CASCADES	A-8001/U 70	EDELRID (GERMANY)
MIDDLE CASCADES	DC - 40	LIROS GMHB (GERMANY)
MIDDLE CASCADES	A-8001/U 50	EDELRID (GERMANY)
MIDDLE CASCADES	A-8001/U 70	EDELRID (GERMANY)
MIDDLE CASCADES	A-8001/U 90	EDELRID (GERMANY)
MIDDLE CASCADES	A-8001/U 190	EDELRID (GERMANY)
MIDDLE CASCADES	A-8001/U 230	EDELRID (GERMANY)
MAIN	A-8001/U 50	EDELRID (GERMANY)
MAIN	A-8001/U 70	EDELRID (GERMANY)
MAIN	A-8001/U 190	EDELRID (GERMANY)
MAIN	A-8001/U 340	EDELRID (GERMANY)
MAIN	A-8001/U 470	EDELRID (GERMANY)
MAIN BREAK	TARAX-200	EDELRID (GERMANY)
THREAD	SERAFIL 60	AMAN (GERMANY)

RISERS	FABRIC CODE	SUPPLIER
MATERIAL	3455	COUSIN (FRANCE)
COLOR INDICATOR	210D	TECNI SANGLES (FRANCE)
THREAD	V138	COATS (ENGLAND)
MAILLONS	3.5	ANSUNG PRECISION (KOREA)
PULLEYS	RF25109	RONSTAN (AUSTRALIA)

LINE PLAN



LINE REPLACEMENT

The use of new high performance materials in modern wings is now common. The advantages of using these materials in terms of performance are widely acknowledged as part of our sport's evolution. However, along with those technological advances come additional responsibilities which cannot be avoided. As a result, line inspection and replacement must be carried out more frequently. That increased frequency appears to be encouraging some pilots to try to perform line replacement themselves.

WE STRONGLY RECOMMEND ANY LINE REPLACEMENT IS PERFORMED BY AN AUTHORISED SPECIALIST ONLY.

Ultimately, if the pilot decides to perform any line replacement without professional oversight they therefore assume all responsibility. In this case, these guidelines will have to be followed.

BEFORE REMOVING ANY LINES, CHECK:

- That the line plan is correct according to the glider model and size.
- That the line kit is complete and correct.
- Never assume but always check each individual line for the correct specification.

AFTER CONFIRMING THAT ALL LINES ARE CORRECT:

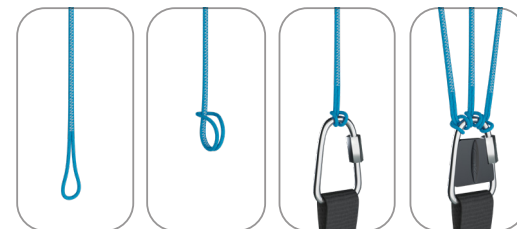
- Fit the new line(s) WITHOUT removing the label.
- Once replaced, measure each line length to confirm the correct measurement.
- Inflate the wing to check for any irregularities.
- The line labels may then be removed but NOT BEFORE completion of the line replacement.

Niviuk strongly recommends for any line replacement to be carried out by an authorised professional only, and will not accept responsibility for any damage or injury caused as a result of incorrect re-assembly.

SPECIAL CONFIGURATION ON LINES 3C1 – 3C2 – 3C3

The 3C1 – 3C2 – 3C3 lines are connected to the maillon by means of a lark's foot/ clove hitch. See diagram.

The lark's foot/clove hitch is used to adjust the trim to the preset range. The loop will allow readjustment of the trim due to use, stretching or shrinking. Failure to make this loop compromises the trim of the wing and the safety of the pilot.

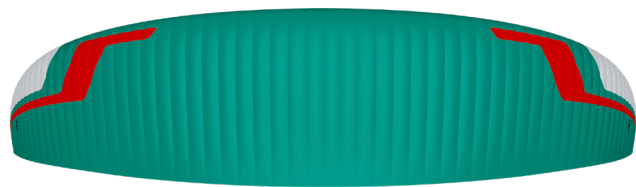


RISER PLAN

A	A'	B
3A1	3A3	3C1
3A2	stab	3C2
		3C3



COLORS



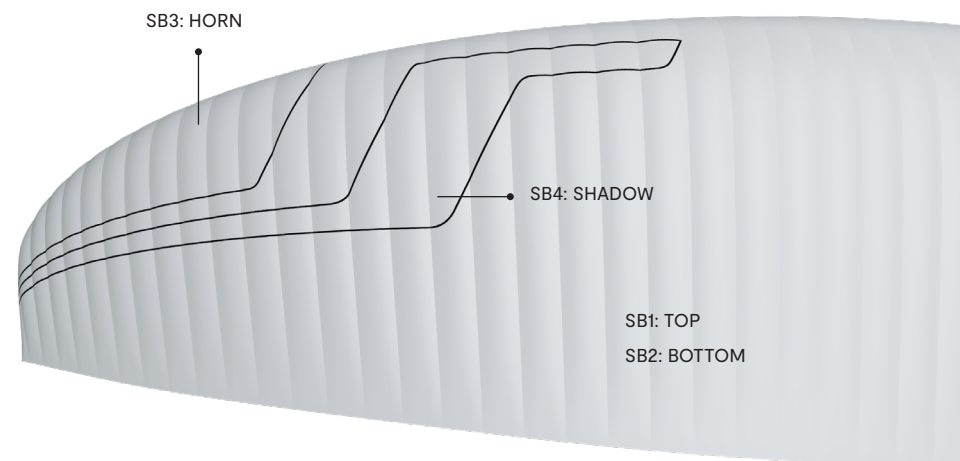
DISKUS	SB1	SPECTRA GREEN	TOP	REF: 5335
	SB2	WHITE	BOTTOM - ALL WHITE	REF: 001
	SB3	WHITE	HORN	REF: 001
	SB4	DRAGON RED	SHADOW	REF: 636



OPAK	SB1	SLATE BLUE	TOP	REF: 317
	SB2	WHITE	BOTTOM - ALL WHITE	REF: 001
	SB3	WHITE	HORN	REF: 001
	SB4	ORANGE	SHADOW	REF: 744



WASP	SB1	GOLD	TOP	REF: 939
	SB2	WHITE	BOTTOM - ALL WHITE	REF: 001
	SB3	SPECTRA GREEN	HORN	REF: 5335
	SB4	BLACK	SHADOW	REF: 102



WING LOAD

ARTIK R

21		23		25		27		29	
P.T.V.	KG/M2	P.T.V.	KG/M2	P.T.V.	KG/M2	P.T.V.	KG/M2	P.T.V.	KG/M2
65	= 3,02	80	= 3,48	90	= 3,67	100	= 3,77	110	= 3,79
66	= 3,07	81	= 3,52	91	= 3,71	101	= 3,81	111	= 3,83
67	= 3,12	82	= 3,57	92	= 3,76	102	= 3,85	112	= 3,86
68	= 3,16	83	= 3,61	93	= 3,80	103	= 3,89	113	= 3,90
69	= 3,21	84	= 3,65	94	= 3,84	104	= 3,92	114	= 3,93
70	= 3,26	85	= 3,70	95	= 3,88	105	= 3,96	115	= 3,97
71	= 3,30	86	= 3,74	96	= 3,92	106	= 4,00	116	= 4,00
72	= 3,35	87	= 3,78	97	= 3,96	107	= 4,04	117	= 4,03
73	= 3,40	88	= 3,83	98	= 4,00	108	= 4,08	118	= 4,07
74	= 3,44	89	= 3,87	99	= 4,04	109	= 4,11	119	= 4,10
75	= 3,49	90	= 3,91	100	= 4,08	110	= 4,15	120	= 4,14
76	= 3,53	91	= 3,96	101	= 4,12	111	= 4,19	121	= 4,17
77	= 3,58	92	= 4,00	102	= 4,16	112	= 4,23	122	= 4,21
78	= 3,63	93	= 4,04	103	= 4,20	113	= 4,26	123	= 4,24
79	= 3,67	94	= 4,09	104	= 4,24	114	= 4,30	124	= 4,28
80	= 3,72	95	= 4,13	105	= 4,29	115	= 4,34	125	= 4,31
81	= 3,77					116	= 4,38	126	= 4,34
82	= 3,81					117	= 4,42	127	= 4,38
83	= 3,86					118	= 4,45	128	= 4,41
84	= 3,91					119	= 4,49	129	= 4,45
85	= 3,95					120	= 4,53	130	= 4,48
								131	= 4,52
								132	= 4,55
								133	= 4,59
								134	= 4,62
								135	= 4,66

LINES

ARTIK R 21

REF.	MAT.	kg	COLOR	mm	REF.	MAT.	kg	COLOR	mm	REF.	MAT.	kg	COLOR	mm	REF.	MAT.	kg	COLOR	mm	REF.	MAT.	kg	COLOR	mm
A					B					C					D					BRAKE				
a1	8001/U	70	ORG	428	b1	8001/U	50	ORG	386	c1	8001/U	70	BLUE	311	d1	DC	40	WHT	266	br1	DC	40	WHT	832
a2	8001/U	70	ORG	396	b2	8001/U	50	ORG	350	c2	8001/U	70	BLUE	276	d2	DC	40	WHT	235	br2	DC	40	WHT	679
a3	8001/U	70	ORG	391	b3	8001/U	50	ORG	347	c3	8001/U	70	BLUE	278	d3	DC	40	WHT	240	br3	DC	40	WHT	712
a4	8001/U	70	ORG	409	b4	8001/U	50	ORG	368	c4	8001/U	70	BLUE	295	d4	DC	40	WHT	249	br4	DC	40	WHT	779
a5	8001/U	70	ORG	393	b5	8001/U	50	ORG	356	c5	8001/U	70	BLUE	409	d5	DC	40	WHT	250	br5	DC	40	WHT	759
a6	8001/U	70	ORG	356	b6	8001/U	50	ORG	316	c6	8001/U	70	BLUE	368	d6	DC	40	WHT	210	br6	DC	40	WHT	568
a7	8001/U	70	ORG	354	b7	8001/U	50	ORG	317	c7	8001/U	70	BLUE	345	d7	DC	40	WHT	205	br7	DC	40	WHT	625
a8	8001/U	70	ORG	352	b8	8001/U	50	ORG	318	c8	8001/U	70	BLUE	347	d8	DC	40	WHT	195	br8	DC	40	WHT	689
a9	8001/U	70	ORG	301						c9	8001/U	70	BLUE	410	d9	DC	40	WHT	535	br9	DC	40	WHT	652
a10	8001/U	70	ORG	249						c10	8001/U	50	BLUE	358	d10	DC	40	WHT	484	br10	DC	40	WHT	515
a11	8001/U	70	ORG	277						c11	8001/U	50	BLUE	323	d11	DC	40	WHT	416	br11	DC	40	WHT	490
a12	8001/U	70	ORG	253						c12	8001/U	50	BLUE	300	d12	DC	40	WHT	388	br12	DC	40	WHT	584
a13	8001/U	50	ORG	241						c13	8001/U	50	BLUE	258	d13	DC	40	WHT	325					
a14	8001/U	50	ORG	263						c14	8001/U	50	BLUE	280	d14	DC	40	WHT	335					
a15	DC	40	WHT	556						c15	DC	40	WHT	554										
a16	DC	40	WHT	509						c16	DC	40	WHT	533										
A1	8001/U	190	ORG	1633						C1	8001/U	70	Blue	614	D1	DC	40	Wht	777	2BR1	DC	40	Wht	963
A2	8001/U	190	ORG	1617						C2	8001/U	70	BLUE	599	D2	DC	40	WHT	754	2BR2	DC	40	WHT	836
A3	8001/U	190	ORG	1505						C3	8001/U	70	BLUE	378	D3	DC	40	WHT	643	2BR3	DC	40	WHT	742
A4	8001/U	190	ORG	1444						C4	8001/U	70	BLUE	333	D4	DC	40	WHT	571	2BR4	DC	40	WHT	611
A5	8001/U	130	ORG	1733						C5	8001/U	70	BLUE	1603						2BR5	DC	40	WHT	551
A6	8001/U	70	ORG	848						C6	8001/U	50	BLUE	778						2BR6	DC	40	WHT	537
A7	8001/U	50	ORG	838						C7	8001/U	50	BLUE	808						3BR1	8001/U	50	ORG	3106
2A1	8001/U	90	ORG	739						2C1	8001/U	90	BLUE	1095						3BR2	8001/U	50	ORG	3024
										2C2	8001/U	90	BLUE	1086						3BR3	8001/U	50	ORG	2961
										2C3	8001/U	90	BLUE	1076										
										2C4	8001/U	90	BLUE	1083										
										2C5	8001/U	70	BLUE	754										
3A1	8001/U	340	ORG	4609						3C1	8001/U	190	BLUE	4624						BRMAIN	TARAX	200	RED	2549
3A2	8001/U	340	ORG	4668						3C2	8001/U	190	BLUE	4663						KNOT POINT:				2349
3A3	8001/U	190	ORG	4275						3C3	8001/U	70	BLUE	4276										
STAB	8001/U	50	ORG	5349																				

LINES

ARTIK R 23

REF.	MAT.	kg	COLOR	mm	REF.	MAT.	kg	COLOR	mm	REF.	MAT.	kg	COLOR	mm	REF.	MAT.	kg	COLOR	mm	REF.	MAT.	kg	COLOR	mm
A					B					C					D					BRAKE				
a1	8001/U	70	ORG	442	b1	8001/U	50	ORG	399	c1	8001/U	70	BLUE	321	d1	DC	40	WHT	275	br1	DC	40	WHT	860
a2	8001/U	70	ORG	409	b2	8001/U	50	ORG	363	c2	8001/U	70	BLUE	286	d2	DC	40	WHT	244	br2	DC	40	WHT	703
a3	8001/U	70	ORG	404	b3	8001/U	50	ORG	359	c3	8001/U	70	BLUE	287	d3	DC	40	WHT	249	br3	DC	40	WHT	736
a4	8001/U	70	ORG	423	b4	8001/U	50	ORG	381	c4	8001/U	70	BLUE	306	d4	DC	40	WHT	258	br4	DC	40	WHT	806
a5	8001/U	70	ORG	407	b5	8001/U	50	ORG	368	c5	8001/U	70	BLUE	423	d5	DC	40	WHT	258	br5	DC	40	WHT	785
a6	8001/U	70	ORG	368	b6	8001/U	50	ORG	327	c6	8001/U	70	BLUE	380	d6	DC	40	WHT	218	br6	DC	40	WHT	588
a7	8001/U	70	ORG	366	b7	8001/U	50	ORG	328	c7	8001/U	70	BLUE	356	d7	DC	40	WHT	212	br7	DC	40	WHT	646
a8	8001/U	70	ORG	364	b8	8001/U	50	ORG	329	c8	8001/U	70	BLUE	359	d8	DC	40	WHT	202	br8	DC	40	WHT	713
a9	8001/U	70	ORG	311						c9	8001/U	70	BLUE	424	d9	DC	40	WHT	553	br9	DC	40	WHT	674
a10	8001/U	70	ORG	258						c10	8001/U	50	BLUE	371	d10	DC	40	WHT	500	br10	DC	40	WHT	533
a11	8001/U	70	ORG	286						c11	8001/U	50	BLUE	334	d11	DC	40	WHT	431	br11	DC	40	WHT	506
a12	8001/U	70	ORG	262						c12	8001/U	50	BLUE	311	d12	DC	40	WHT	401	br12	DC	40	WHT	604
a13	8001/U	50	ORG	249						c13	8001/U	50	BLUE	267	d13	DC	40	WHT	336					
a14	8001/U	50	ORG	272						c14	8001/U	50	BLUE	290	d14	DC	40	WHT	347					
a15	DC	40	WHT	575						c15	DC	40	WHT	573										
a16	DC	40	WHT	526						c16	DC	40	WHT	552										
A1	8001/U	190	ORG	1688						C1	8001/U	70	Blue	635	D1	DC	40	Wht	803	2BR1	DC	40	Wht	995
A2	8001/U	190	ORG	1674						C2	8001/U	70	BLUE	620	D2	DC	40	WHT	780	2BR2	DC	40	WHT	866
A3	8001/U	190	ORG	1557						C3	8001/U	70	BLUE	391	D3	DC	40	WHT	665	2BR3	DC	40	WHT	766
A4	8001/U	190	ORG	1494						C4	8001/U	70	BLUE	345	D4	DC	40	WHT	590	2BR4	DC	40	WHT	633
A5	8001/U	130	ORG	1793						C5	8001/U	70	BLUE	1658						2BR5	DC	40	WHT	569
A6	8001/U	70	ORG	877						C6	8001/U	50	BLUE	804						2BR6	DC	40	WHT	557
A7	8001/U	50	ORG	867						C7	8001/U	50	BLUE	836						3BR1	8001/U	50	ORG	3211
2A1	8001/U	90	ORG	764						2C1	8001/U	90	BLUE	1132						3BR2	8001/U	50	ORG	3129
										2C2	8001/U	90	BLUE	1124						3BR3	8001/U	50	ORG	3065
										2C3	8001/U	90	BLUE	1112										
										2C4	8001/U	90	BLUE	1120										
										2C5	8001/U	70	BLUE	780										
3A1	8001/U	340	ORG	4784						3C1	8001/U	190	BLUE	4799						BRMAIN	TARAX	200	RED	2647
3A2	8001/U	340	ORG	4848						3C2	8001/U	190	BLUE	4843						KNOT POINT:				2447
3A3	8001/U	190	ORG	4443						3C3	8001/U	70	BLUE	4444										
STAB	8001/U	50	ORG	5554																				

LINES

ARTIK R 25

REF.	MAT.	kg	COLOR	mm	REF.	MAT.	kg	COLOR	mm	REF.	MAT.	kg	COLOR	mm	REF.	MAT.	kg	COLOR	mm	REF.	MAT.	kg	COLOR	mm
A					B					C					D					BRAKE				
a1	8001/U	70	ORG	456	b1	8001/U	50	ORG	412	c1	8001/U	70	BLUE	332	d1	DC	40	WHT	283	br1	DC	40	WHT	888
a2	8001/U	70	ORG	423	b2	8001/U	50	ORG	374	c2	8001/U	70	BLUE	295	d2	DC	40	WHT	252	br2	DC	40	WHT	726
a3	8001/U	70	ORG	417	b3	8001/U	50	ORG	371	c3	8001/U	70	BLUE	296	d3	DC	40	WHT	256	br3	DC	40	WHT	759
a4	8001/U	70	ORG	437	b4	8001/U	50	ORG	393	c4	8001/U	70	BLUE	316	d4	DC	40	WHT	267	br4	DC	40	WHT	832
a5	8001/U	70	ORG	420	b5	8001/U	50	ORG	379	c5	8001/U	70	BLUE	436	d5	DC	40	WHT	267	br5	DC	40	WHT	810
a6	8001/U	70	ORG	380	b6	8001/U	50	ORG	338	c6	8001/U	70	BLUE	393	d6	DC	40	WHT	225	br6	DC	40	WHT	608
a7	8001/U	70	ORG	377	b7	8001/U	50	ORG	338	c7	8001/U	70	BLUE	368	d7	DC	40	WHT	219	br7	DC	40	WHT	667
a8	8001/U	70	ORG	376	b8	8001/U	50	ORG	340	c8	8001/U	70	BLUE	371	d8	DC	40	WHT	208	br8	DC	40	WHT	736
a9	8001/U	70	ORG	321						c9	8001/U	70	BLUE	438	d9	DC	40	WHT	571	br9	DC	40	WHT	696
a10	8001/U	70	ORG	266						c10	8001/U	50	BLUE	383	d10	DC	40	WHT	516	br10	DC	40	WHT	550
a11	8001/U	70	ORG	295						c11	8001/U	50	BLUE	345	d11	DC	40	WHT	444	br11	DC	40	WHT	522
a12	8001/U	70	ORG	270						c12	8001/U	50	BLUE	321	d12	DC	40	WHT	414	br12	DC	40	WHT	623
a13	8001/U	50	ORG	257						c13	8001/U	50	BLUE	275	d13	DC	40	WHT	347					
a14	8001/U	50	ORG	281						c14	8001/U	50	BLUE	299	d14	DC	40	WHT	358					
a15	DC	40	WHT	594						c15	DC	40	WHT	591										
a16	DC	40	WHT	543						c16	DC	40	WHT	569										
A1	8001/U	190	ORG	1742						C1	8001/U	70	Blue	655	D1	DC	40	Wht	829	2BR1	DC	40	Wht	1.026
A2	8001/U	190	ORG	1728						C2	8001/U	70	BLUE	640	D2	DC	40	WHT	805	2BR2	DC	40	WHT	895
A3	8001/U	190	ORG	1607						C3	8001/U	70	BLUE	404	D3	DC	40	WHT	686	2BR3	DC	40	WHT	790
A4	8001/U	190	ORG	1542						C4	8001/U	70	BLUE	356	D4	DC	40	WHT	609	2BR4	DC	40	WHT	654
A5	8001/U	130	ORG	1850						C5	8001/U	70	BLUE	1711						2BR5	DC	40	WHT	587
A6	8001/U	70	ORG	905						C6	8001/U	50	BLUE	830						2BR6	DC	40	WHT	575
A7	8001/U	50	ORG	895						C7	8001/U	50	BLUE	863						3BR1	8001/U	50	ORG	3312
2A1	8001/U	90	ORG	789						2C1	8001/U	90	BLUE	1168						3BR2	8001/U	50	ORG	3230
										2C2	8001/U	90	BLUE	1161						3BR3	8001/U	50	ORG	3167
										2C3	8001/U	90	BLUE	1148										
										2C4	8001/U	90	BLUE	1157										
										2C5	8001/U	70	BLUE	805										
3A1	8001/U	340	ORG	4955						3C1	8001/U	190	BLUE	4970						BRMAIN	TARAX	200	RED	2741
3A2	8001/U	340	ORG	5023						3C2	8001/U	190	BLUE	5017						KNOT POINT:				2541
3A3	8001/U	190	ORG	4606						3C3	8001/U	70	BLUE	4607										
STAB	8001/U	50	ORG	5752																				

LINES

ARTIK R 27

REF.	MAT.	kg	COLOR	mm	REF.	MAT.	kg	COLOR	mm	REF.	MAT.	kg	COLOR	mm	REF.	MAT.	kg	COLOR	mm	REF.	MAT.	kg	COLOR	mm
A					B					C					D					BRAKE				
a1	8001/U	70	ORG	474	b1	8001/U	50	ORG	428	c1	8001/U	70	BLUE	345	d1	DC	40	WHT	294	br1	DC	40	WHT	923
a2	8001/U	70	ORG	440	b2	8001/U	50	ORG	390	c2	8001/U	70	BLUE	307	d2	DC	40	WHT	262	br2	DC	40	WHT	756
a3	8001/U	70	ORG	434	b3	8001/U	50	ORG	385	c3	8001/U	70	BLUE	307	d3	DC	40	WHT	266	br3	DC	40	WHT	789
a4	8001/U	70	ORG	455	b4	8001/U	50	ORG	409	c4	8001/U	70	BLUE	328	d4	DC	40	WHT	277	br4	DC	40	WHT	865
a5	8001/U	70	ORG	436	b5	8001/U	50	ORG	394	c5	8001/U	70	BLUE	453	d5	DC	40	WHT	277	br5	DC	40	WHT	843
a6	8001/U	70	ORG	396	b6	8001/U	50	ORG	351	c6	8001/U	70	BLUE	409	d6	DC	40	WHT	234	br6	DC	40	WHT	633
a7	8001/U	70	ORG	392	b7	8001/U	50	ORG	352	c7	8001/U	70	BLUE	382	d7	DC	40	WHT	227	br7	DC	40	WHT	693
a8	8001/U	70	ORG	391	b8	8001/U	50	ORG	354	c8	8001/U	70	BLUE	386	d8	DC	40	WHT	217	br8	DC	40	WHT	766
a9	8001/U	70	ORG	334						c9	8001/U	70	BLUE	455	d9	DC	40	WHT	594	br9	DC	40	WHT	724
a10	8001/U	70	ORG	277						c10	8001/U	50	BLUE	398	d10	DC	40	WHT	537	br10	DC	40	WHT	573
a11	8001/U	70	ORG	307						c11	8001/U	50	BLUE	359	d11	DC	40	WHT	462	br11	DC	40	WHT	543
a12	8001/U	70	ORG	281						c12	8001/U	50	BLUE	333	d12	DC	40	WHT	431	br12	DC	40	WHT	648
a13	8001/U	50	ORG	267						c13	8001/U	50	BLUE	286	d13	DC	40	WHT	361					
a14	8001/U	50	ORG	292						c14	8001/U	50	BLUE	311	d14	DC	40	WHT	372					
a15	DC	40	WHT	617						c15	DC	40	WHT	615										
a16	DC	40	WHT	565						c16	DC	40	WHT	592										
A1	8001/U	230	ORG	1811						C1	8001/U	90	BLUE	681	D1	DC	40	Wht	862	2BR1	DC	40	Wht	1.067
A2	8001/U	230	ORG	1798						C2	8001/U	90	BLUE	665	D2	DC	40	WHT	837	2BR2	DC	40	WHT	932
A3	8001/U	230	ORG	1671						C3	8001/U	70	BLUE	420	D3	DC	40	WHT	714	2BR3	DC	40	WHT	821
A4	8001/U	190	ORG	1604						C4	8001/U	70	BLUE	370	D4	DC	40	WHT	634	2BR4	DC	40	WHT	682
A5	8001/U	130	ORG	1924						C5	8001/U	90	BLUE	1780						2BR5	DC	40	WHT	609
A6	8001/U	70	ORG	941						C6	8001/U	50	BLUE	863						2BR6	DC	40	WHT	599
A7	8001/U	50	ORG	931						C7	8001/U	50	BLUE	897						3BR1	8001/U	70	ORG	3443
2A1	8001/U	90	ORG	821						2C1	8001/U	130	BLUE	1214						3BR2	8001/U	70	ORG	3361
										2C2	8001/U	130	BLUE	1209						3BR3	8001/U	70	ORG	3298
										2C3	8001/U	130	BLUE	1193										
										2C4	8001/U	130	BLUE	1204										
										2C5	8001/U	70	BLUE	838										
3A1	8001/U	470	ORG	5178						3C1	8001/U	230	BLUE	5189						BRMAIN	TARAX	200	RED	2862
3A2	8001/U	340	ORG	5251						3C2	8001/U	230	BLUE	5242						KNOT POINT:				2662
3A3	8001/U	190	ORG	4815						3C3	8001/U	130	BLUE	4816										
STAB	8001/U	90	ORG	6007																				

LINES

ARTIK R 29

REF.	MAT.	kg	COLOR	mm	REF.	MAT.	kg	COLOR	mm	REF.	MAT.	kg	COLOR	mm	REF.	MAT.	kg	COLOR	mm	REF.	MAT.	kg	COLOR	mm
A					B					C					D					BRAKE				
a1	8001/U	70	ORG	496	b1	8001/U	50	ORG	447	c1	8001/U	70	BLUE	360	d1	DC	40	WHT	308	br1	DC	40	WHT	965
a2	8001/U	70	ORG	460	b2	8001/U	50	ORG	408	c2	8001/U	70	BLUE	322	d2	DC	40	WHT	275	br2	DC	40	WHT	791
a3	8001/U	70	ORG	454	b3	8001/U	50	ORG	403	c3	8001/U	70	BLUE	321	d3	DC	40	WHT	278	br3	DC	40	WHT	825
a4	8001/U	70	ORG	476	b4	8001/U	50	ORG	429	c4	8001/U	70	BLUE	344	d4	DC	40	WHT	291	br4	DC	40	WHT	905
a5	8001/U	70	ORG	456	b5	8001/U	50	ORG	413	c5	8001/U	70	BLUE	474	d5	DC	40	WHT	290	br5	DC	40	WHT	882
a6	8001/U	70	ORG	414	b6	8001/U	50	ORG	368	c6	8001/U	70	BLUE	428	d6	DC	40	WHT	245	br6	DC	40	WHT	663
a7	8001/U	70	ORG	410	b7	8001/U	50	ORG	368	c7	8001/U	70	BLUE	400	d7	DC	40	WHT	237	br7	DC	40	WHT	724
a8	8001/U	70	ORG	409	b8	8001/U	50	ORG	370	c8	8001/U	70	BLUE	404	d8	DC	40	WHT	227	br8	DC	40	WHT	802
a9	8001/U	70	ORG	349						c9	8001/U	70	BLUE	476	d9	DC	40	WHT	621	br9	DC	40	WHT	757
a10	8001/U	70	ORG	290						c10	8001/U	50	BLUE	416	d10	DC	40	WHT	562	br10	DC	40	WHT	600
a11	8001/U	70	ORG	321						c11	8001/U	50	BLUE	376	d11	DC	40	WHT	484	br11	DC	40	WHT	567
a12	8001/U	70	ORG	294						c12	8001/U	50	BLUE	349	d12	DC	40	WHT	451	br12	DC	40	WHT	678
a13	8001/U	50	ORG	280						c13	8001/U	50	BLUE	299	d13	DC	40	WHT	377					
a14	8001/U	50	ORG	306						c14	8001/U	50	BLUE	325	d14	DC	40	WHT	389					
a15	DC	40	WHT	646						c15	DC	40	WHT	643										
a16	DC	40	WHT	591						c16	DC	40	WHT	619										
A1	8001/U	230	ORG	1893						C1	8001/U	90	BLUE	713	D1	DC	40	Wht	902	2BR1	DC	40	Wht	1.115
A2	8001/U	230	ORG	1882						C2	8001/U	90	BLUE	696	D2	DC	40	WHT	876	2BR2	DC	40	WHT	976
A3	8001/U	230	ORG	1748						C3	8001/U	70	BLUE	439	D3	DC	40	WHT	747	2BR3	DC	40	WHT	858
A4	8001/U	190	ORG	1679						C4	8001/U	70	BLUE	387	D4	DC	40	WHT	663	2BR4	DC	40	WHT	714
A5	8001/U	130	ORG	2013						C5	8001/U	90	BLUE	1862						2BR5	DC	40	WHT	637
A6	8001/U	70	ORG	984						C6	8001/U	50	BLUE	903						2BR6	DC	40	WHT	628
A7	8001/U	50	ORG	974						C7	8001/U	50	BLUE	939						3BR1	8001/U	70	ORG	3600
2A1	8001/U	90	ORG	859						2C1	8001/U	130	BLUE	1269						3BR2	8001/U	70	ORG	3517
										2C2	8001/U	130	BLUE	1266						3BR3	8001/U	70	ORG	3454
										2C3	8001/U	130	BLUE	1248										
										2C4	8001/U	130	BLUE	1260										
										2C5	8001/U	70	BLUE	876										
3A1	8001/U	470	ORG	5436						3C1	8001/U	230	BLUE	5451						BRMAIN	TARAX	200	RED	3008
3A2	8001/U	340	ORG	5517						3C2	8001/U	230	BLUE	5511						KNOT POINT:				2808
3A3	8001/U	190	ORG	5066						3C3	8001/U	130	BLUE	5067										
STAB	8001/U	90	ORG	6313																				

LINE MEASUREMENTS

ARTIK R - 21

LINES HEIGHT + RISER mm

	A	B	C	D	BR
1	7170	7128	7140	7265	7328
2	7138	7093	7105	7235	7175
3	7118	7074	7082	7208	7081
4	7136	7095	7100	7217	7148
5	7068	7030	7022	7135	6952
6	7031	6991	6980	7096	6761
7	6966	6930	6920	7025	6687
8	6965	6931	6922	7015	6751
9	6823		6793	6923	6591
10	6772		6741	6871	6454
11	6649		6634	6730	6415
12	6625		6611	6701	6509
13	6610		6604	6674	
14	6627		6626	6684	
15	6428		6425		
16	6381		6405		

RISERS LENGHT mm

A	A'	B	
500	500	500	STANDARD
350	395	500	ACCELERATED

ARTIK R - 23

LINES HEIGHT + RISER mm

	A	B	C	D	BR
1	7419	7376	7383	7513	7601
2	7386	7340	7348	7482	7444
3	7367	7322	7326	7456	7348
4	7386	7344	7345	7465	7418
5	7317	7278	7265	7382	7215
6	7278	7237	7222	7342	7018
7	7213	7175	7160	7269	6943
8	7211	7176	7163	7259	7010
9	7062		7030	7164	6843
10	7009		6977	7111	6702
11	6882		6865	6965	6663
12	6858		6842	6935	6761
13	6841		6835	6907	
14	6864		6858	6918	
15	6658		6656		
16	6609		6635		

RISERS LENGHT mm

A	A'	B	
500	500	500	STANDARD
350	395	500	ACCELERATED

LINE MEASUREMENTS

ARTIK R - 25

LINES HEIGHT + RISER mm

	A	B	C	D	BR
1	7658	7613	7620	7754	7855
2	7624	7576	7584	7722	7693
3	7605	7558	7562	7696	7595
4	7625	7581	7582	7706	7668
5	7554	7514	7501	7622	7459
6	7515	7472	7458	7580	7257
7	7447	7408	7394	7506	7180
8	7446	7410	7397	7496	7249
9	7292		7260	7398	7079
10	7237		7205	7343	6933
11	7106		7090	7193	6893
12	7082		7066	7162	6994
13	7064		7058	7132	
14	7088		7082	7143	
15	6875		6872		
16	6824		6850		

RISERS LENGHT mm

A	A'	B	
500	500	500	STANDARD
330	375	500	ACCELERATED

ARTIK R - 27

LINES HEIGHT + RISER mm

	A	B	C	D	BR
1	7967	7920	7926	8064	8178
2	7932	7882	7888	8032	8011
3	7914	7865	7867	8006	7909
4	7934	7889	7888	8017	7985
5	7863	7821	7806	7931	7770
6	7822	7778	7761	7888	7560
7	7752	7711	7695	7812	7481
8	7751	7714	7699	7801	7554
9	7587		7556	7700	7376
10	7530		7499	7643	7225
11	7394		7380	7487	7185
12	7369		7355	7455	7290
13	7351		7346	7424	
14	7376		7371	7435	
15	7153		7150		
16	7100		7127		

RISERS LENGHT mm

A	A'	B	
500	500	500	STANDARD
330	375	500	ACCELERATED

LINE MEASUREMENTS

ARTIK R - 29

LINES HEIGHT + RISER mm

	A	B	C	D	BR
1	8331	8283	8287	8432	8581
2	8296	8243	8249	8398	8407
3	8278	8227	8228	8373	8302
4	8300	8253	8251	8385	8382
5	8226	8183	8166	8297	8157
6	8184	8138	8120	8252	7938
7	8112	8069	8052	8173	7857
8	8111	8072	8056	8163	7934
9	7941		7907	8057	7749
10	7881		7847	7998	7592
11	7740		7724	7835	7550
12	7713		7697	7802	7661
13	7694		7688	7769	
14	7720		7714	7781	
15	7486		7483		
16	7431		7459		

RISERS LENGHT mm

A	A'	B	
500	500	500	STANDARD
330	375	500	ACCELERATED

SUSPENSION

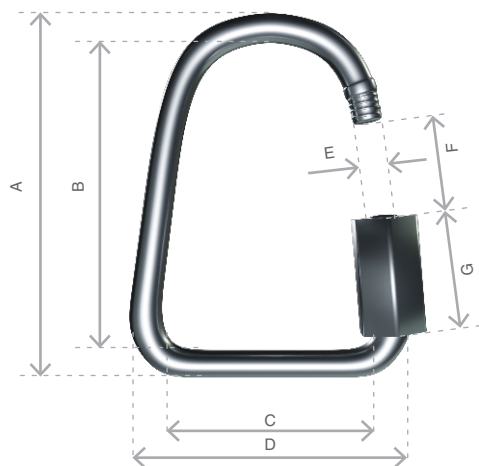
MATERIAL CODE		DC	A-8001/U	A-8001/U	A-8001/U	A-8001/U	A-8001/U	A-8001/U	A-8001/U	A-8001/U	TARAX
STRENGTH CODE		040	50	70	90	130	190	230	340	470	200
DIAMETER m/m	∅	0,5	0,5	0,7	0,8	0,9	1,1	1,1 x 1,4	1,5 X 1,9	1,6 X 2,2	1,7
CORE MATERIAL		DYNEEMA	ARAMID	ARAMID	ARAMID	ARAMID	ARAMID	ARAMID	ARAMID	ARAMID	Dyneema
SLEEVE MATERIAL		NO	NO	NO	NO	NO	NO	NO	NO	NO	Polyester
WEIGHT G/M	TOTAL	0,19	0,25	0,4	0,5	0,8	1,1	1,4	2,2	2,9	2
BREAKING STRENGTH daN	MINIMUM	40	50	70	90	130	190	230	340	470	200
	MAXIMUM	48									
STRENGTH AFTER											
5.000 BENDING	TEST EN	33	26	39	49	88	52	69	196,6		
CYCLES											
ELONGATION AT	5 daN en %		0,4	0,5	0,4	0,4	0,4	0,3	0,2	0,5	0,1-0,3
	10 daN en %		0,7	0,7	0,6	0,6	0,6	0,5	0,3	0,6	0,2-0,6
	15 daN en %		1,1	1	0,8	0,8	0,7	0,6	0,4	0,7	0,3-0,7
	20 daN en %		1,5	1,3	1	0,9	0,9	0,7	0,5	0,8	0,3-0,9
	25 daN en %		1,9	1,5	1,3	1	1	0,8	0,6	0,9	0,4-1
	30 daN en %		3,3	2,8	2,3	1,8	1,6	1,3		1,2	
	75 daN en %			3,7	3,2	3,1	2,7	2,3	1,5	1,6	0,8-1,7
	100 daN en %						2,6	3,6	1,9	1,9	1,2-2
	125 daN en %						3,5	3,3		2,3	
	150 daN en %						4,3	3,6	2,6	2,7	1,6-2,4
	175 daN en %									3,1	
	200 daN en %								3,1	3,2	2-2,8
ELONGATION MAX. BREAKING STRENGTH %			3,8	3,9	4,3	4	4,4	4,4		5	

MAILLON & PULLEY

DESCRIPTION

MAILLON	DELTA
CODE	3.5
MATERIAL	STAINLESS STEEL
SIZE	3 m/m
WEIGHT	5 G/PIECE
QUANTITY	6 PIECES
INSERTS	2 GREEN / 4 BLACK

TECHNICAL SPECIFICATIONS



DIMENSIONS	m/m
A	37
B	29
C	14
D	22
E	4
F	5
G	12
LOAD	KG
WORKING LIMIT	110
BREAKING	550

MATERIAL

AISI 304 STAINLESS STEEL

STANDARD

CLOSING APPLIED BY MANUAL & ENTIRE SCREWING OF THE NUT

TO GUARANTEE THE HIGHEST SAFETY (NO THREAD SHOULD BE OBVIOUS)

SYSTEMATIC CONTROL OF MAILLON QUICK-LINKS BEFORE EVERY FLIGHT

DESCRIPTION

PULLEY	20 m/m
CODE	RF25109
MATERIALS	STAINLESS STEEL
	NYLON
	CARBON ACETAL
BEARING	DELRIN®
WEIGHT	9 G/PIECE

TECHNICAL SPECIFICATIONS



DIMENSIONS	m/m
A	32
B	20
C	20
Ø	6 max
LOAD	KG
WORKING LIMIT	250
BREAKING	550

THREAD

SAIL MAKING

NAME	SERAFIL
N° OF REFERENCE	60
MATERIAL	POLYESTER
TYPE OF FINISH	SILK
LINEAR DENSITY	NM 61 / 3 (DTEX 163 * 3)
BREAKING STRENGTH	3,000 CN
ELONGATION	17,00%

PROPIETIES SERAFIL

SOLIDITY ARTIFICIAL LIGTH	ISO 105 B02 > 5 - 6
SOLIDITY SWEAT	ISO 105 E04 > 4
SOLIDITY WASHING	ISO 105 C04 > 3
SOLIDITY GRAZE IN DRY	ISO 105 X12 > 4
SOLIDITY WASHING IN DRY	ISO 105 D01 > 3 - 4

TREATMENT WATER REPELLENT	WR
---------------------------	----

RISERS MAKING

NAME	COATS BONDED C.F.P.
N° OF REFERENCE	V138
MATERIAL	POLYESTER
TYPE OF FINISH	SILK
BREAKING STRENGTH	9,5 KG
ELONGATION	19%

RISERS

RISERS

N° OF REFERENCE	3455
MATERIAL	POLYESTER & TECHNORA
WIDTH	12 MM
THICKNESS	2,25 MM
BREAKING STRENGTH	1.100 DAN
ELONGATION	MAX. 11%
WEIGHT	21,1 G/M
COLOR	BLACK

COLOR INDICATOR

N° OF REFERENCE	IC-G 1-2
MATERIAL	POLYESTER
WIDTH	70 M/M
THICKNESS	0,80 M/M
BREAKING STRENGTH	130 DN
ELONGATION	35 %
WEIGHT	32 G * L.M.
COLOR	GREEN

LOOPS

N° OF REFERENCE	LKI - 10
MATERIAL	NYLON
WIDTH	10 M/M
BREAKING STRENGTH	84 KG
ELONGATION	30 %
WEIGHT	5,5 G/M
COLOR	WHITE



Niviuk Paragliders

C/ Del Ter 6 - nave D
17165 La Celler de Ter - Girona - Spain
+34 972 422 878 | info@niviuk.com

niviuk.com