

# KLIMBER 3 P



Technical *specifications*



**PIVIUK** BEYOND  
THE GLIDE

# TECHNICAL SPECIFICATIONS

			20	21	23
<b>Cells</b>	Number		64	64	64
<b>Aspect ratio</b>	Flat		6,95	6,95	6,95
	Projected		5,32	5,32	5,32
<b>Area</b>	Flat	m2	20,3	21,5	23
	Projected	m2	17,3	18,3	19,6
<b>Span</b>	Flat	m	11,88	12,22	12,64
<b>Cord</b>	Maximum	m	2,15	2,22	2,29
<b>Lines</b>	Total		199	205	212
	Main		2-2/3	2-2/3	2-2/3
<b>Risers</b>	Number	mm	A-A'/B	A-A'/B	A-A'/B
	Speed-bar	kg	190	200	200
<b>Weight in flight</b>	Min-max	kg	60-78	73-93	85-105
<b>Opt. Weight in flight</b>	Min-max	kg	68-73	84-90	95-100
<b>Glider weight</b>			2,85	2,95	3,1
<b>Certification</b>			EN/LTF D	EN/LTF D	EN/LTF D

Total weight can vary +/- 2% due to variations on manufacturing process of fabric.

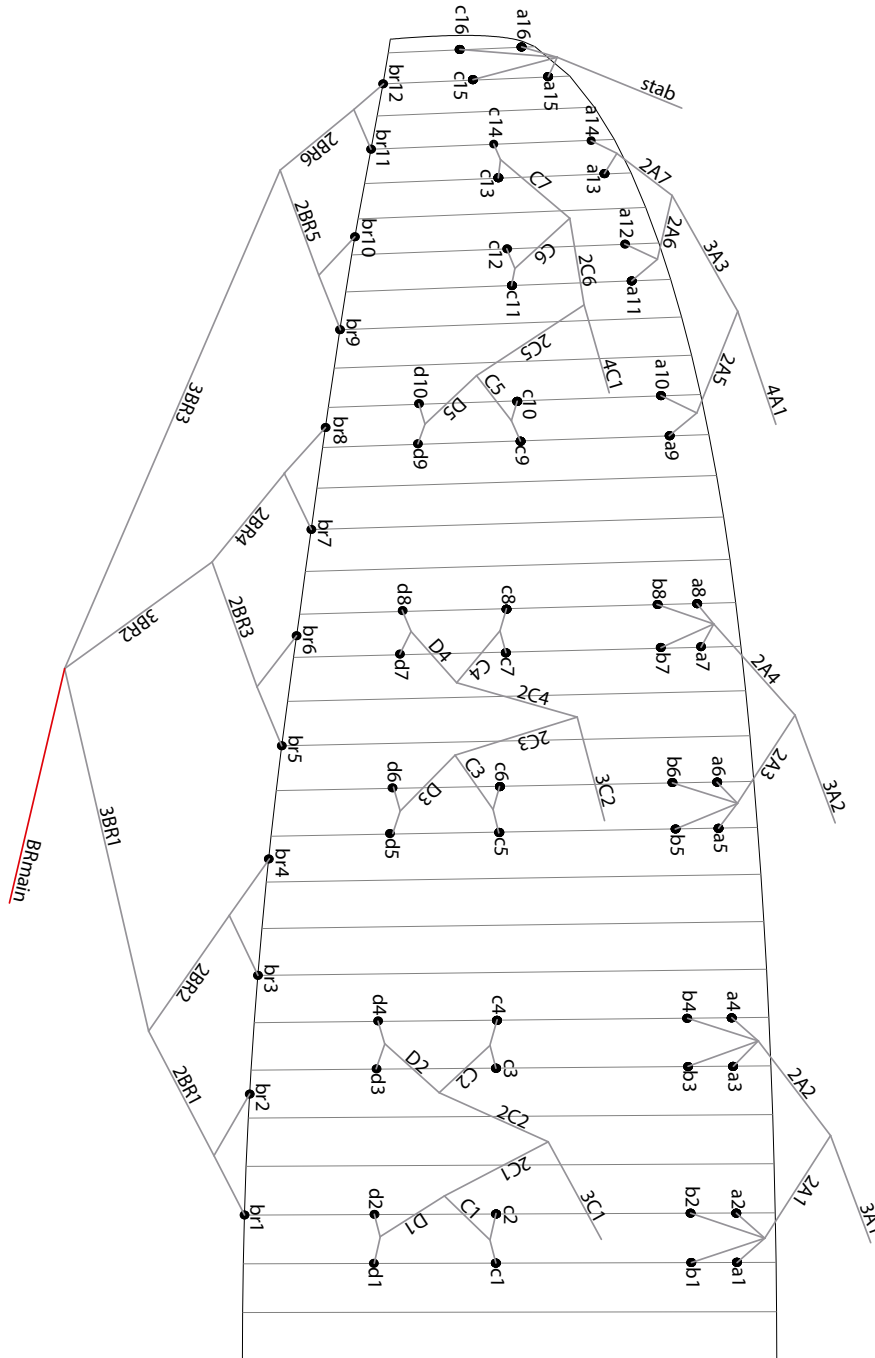
# MATERIALS

CANOPY	FABRIC CODE	SUPPLIER
UPPER SURFACE	N10	DOMINICO TEX CO (KOREA)
BOTTOM SURFACE	N10	DOMINICO TEX CO (KOREA)
PROFILES	70000 E91	PORCHER IND (FRANCE)
DIAGONALS	70000 E91	PORCHER IND (FRANCE)
LOOPS	LKI - 10	KOLON IND. (KOREA)
REIFORCEMENT LOOPS	RIPSTOP FABRIC	DOMINICO TEX CO (KOREA)
RIBS REIFORCEMNET	LTN-0.8/0.5 STICK	SPORTWARE CO.CHINA
THREAD	SERAFIL 60	AMAN (GERMANY)

SUSPENSION LINES	FABRIC CODE	SUPPLIER
UPPER CASCADES	DC - 35	LIROS GMHB (GERMANY)
UPPER CASCADES	DC - 40	LIROS GMHB (GERMANY)
UPPER CASCADES	A-8000/U 50	EDELRID (GERMANY)
UPPER CASCADES	A-8000/U 70	EDELRID (GERMANY)
MIDDLE CASCADES	DC - 35	LIROS GMHB (GERMANY)
MIDDLE CASCADES	DC - 40	LIROS GMHB (GERMANY)
MIDDLE CASCADES	A-8000/U 50	EDELRID (GERMANY)
MIDDLE CASCADES	A-8000/U 70	EDELRID (GERMANY)
MIDDLE CASCADES	A-8000/U 90	EDELRID (GERMANY)
MIDDLE CASCADES	A-8000/U 130	EDELRID (GERMANY)
MIDDLE CASCADES	A-8000/U 190	EDELRID (GERMANY)
MAIN	A-8000/U 130	EDELRID (GERMANY)
MAIN	A-8000/U 190	EDELRID (GERMANY)
MAIN	A-8000/U 340	EDELRID (GERMANY)
MAIN BREAK	TARAX-200	EDELRID (GERMANY)
THREAD	SERAFIL 60	AMAN (GERMANY)

RISERS	FABRIC CODE	SUPPLIER
MATERIAL	CSAR7	COUSIN (FRANCE)
COLOR INDICATOR	210D	TECNI SANGLES (FRANCE)
THREAD	V138	COATS (ENGLAND)
PULLEYS	RF25109	RONSTAN (AUSTRALIA)

# LINE PLAN



## LINE REPLACEMENT

The use of new high performance materials in modern wings is now common. The advantages of using these materials in terms of performance are widely acknowledged as part of our sport's evolution. However, along with those technological advances come additional responsibilities which cannot be avoided. As a result, line inspection and replacement must be carried out more frequently. That increased frequency appears to be encouraging some pilots to try to perform line replacement themselves.

**WE STRONGLY RECOMMEND ANY LINE REPLACEMENT IS PERFORMED BY AN AUTHORISED SPECIALIST ONLY.**

Ultimately, if the pilot decides to perform any line replacement without professional oversight they therefore assume all responsibility. In this case, these guidelines will have to be followed.

### BEFORE REMOVING ANY LINES, CHECK:

- That the line plan is correct according to the glider model and size.
- That the line kit is complete and correct. Never assume but always check each individual line for the correct specification.

### AFTER CONFIRMING THAT ALL LINES ARE CORRECT:

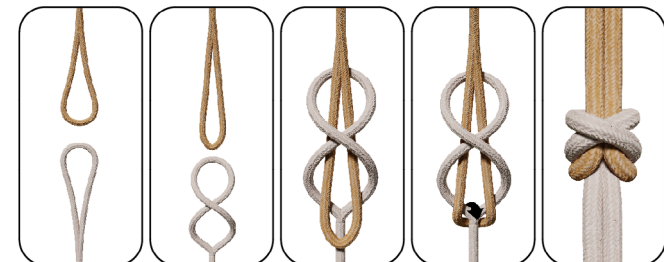
- Fit the new line(s) **WITHOUT** removing the label.
- Once replaced, measure each line length to confirm the correct measurement.
- Inflate the wing to check for any irregularities.
- The line labels may then be removed but **NOT BEFORE** completion of the line replacement.

*Niviuk strongly recommends for any line replacement to be carried out by an authorised professional only, and will not accept responsibility for any damage or injury caused as a result of incorrect re-assembly.*

### SPECIAL CONFIGURATION ON LINES 3C1 – 3C2 – 4C1 - stab

The 3C1 - 3C2 - 4C1 - stab lines are connected to the IKS1000 by means of a loop. See diagram.

The loop is used to adjust the trim to the preset range. The loop will allow readjustment of the trim due to use, stretching or shrinking. Failure to make this loop compromises the trim of the wing and the safety of the pilot.





# RISER PLAN

A	A'	B
3A1	4A1	3C1
3A2	STAB	3C2
		4C1



# COLORS



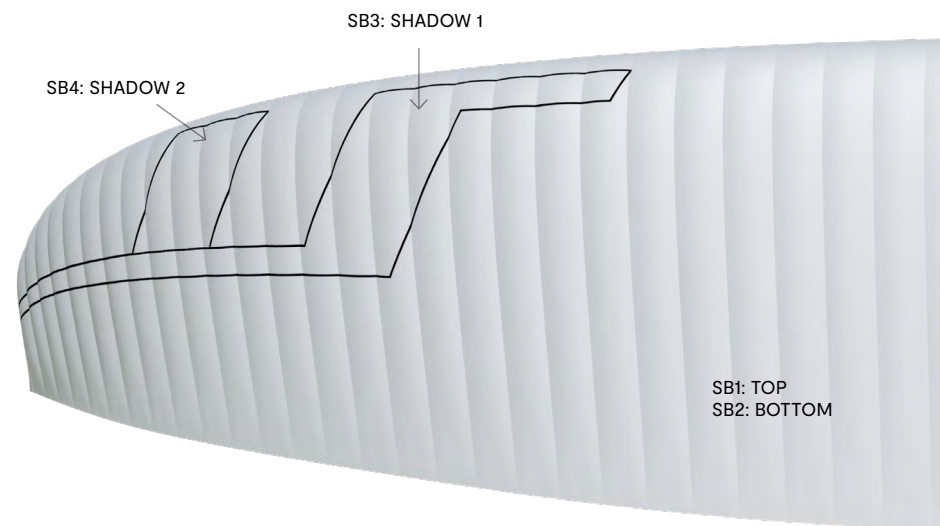
<b>ASTRAL</b>	SB1	SPECTRA GREEN	TOP	REF: 17-5335
	SB2	WHITE	BOTTOM - ALL WHITE	REF: 001
	SB3	WHITE	SHADOW 1	REF: 001
	SB4	DRAGON RED	SHADOW 2	REF: 636



<b>X-ALPS</b>	SB1	WHITE	TOP	REF: 001
	SB2	WHITE	BOTTOM - ALL WHITE	REF: 001
	SB3	SLATE BLUE	SHADOW 1	REF: 317
	SB4	DRAGON RED	SHADOW 2	REF: 636



<b>INK</b>	SB1	SLATE BLUE	TOP	REF: 317
	SB2	WHITE	BOTTOM - ALL WHITE	REF: 001
	SB3	LIMA	SHADOW 1	REF: 500
	SB4	WHITE	SHADOW 2	REF: 001



# WING LOAD

## KLIMBER 3 P

20		21		23	
P.T.V.	KG/M2	P.T.V.	KG/M2	P.T.V.	KG/M2
60	= 2,96	73	= 3,40	85	= 3,70
61	= 3,00	74	= 3,44	86	= 3,74
62	= 3,05	75	= 3,49	87	= 3,78
63	= 3,10	76	= 3,53	88	= 3,83
64	= 3,15	77	= 3,58	89	= 3,87
65	= 3,20	78	= 3,63	90	= 3,91
66	= 3,25	79	= 3,67	91	= 3,96
67	= 3,30	80	= 3,72	92	= 4,00
68	= 3,35	81	= 3,77	93	= 4,04
69	= 3,40	82	= 3,81	94	= 4,09
70	= 3,45	83	= 3,86	95	= 4,13
71	= 3,50	84	= 3,91	96	= 4,17
72	= 3,55	85	= 3,95	97	= 4,22
73	= 3,60	86	= 4,00	98	= 4,26
74	= 3,65	87	= 4,05	99	= 4,30
75	= 3,69	88	= 4,09	100	= 4,35
76	= 3,74	89	= 4,14	101	= 4,39
77	= 3,79	90	= 4,19	102	= 4,43
		91	= 4,23	103	= 4,48
		92	= 4,28	104	= 4,52
		93	= 4,33	105	= 4,57

# LINES

## KLIMBER 3 P 20

REF.	MAT.	kg	COLOR	mm	REF.	MAT.	kg	COLOR	mm	REF.	MAT.	kg	COLOR	mm	REF.	MAT.	kg	COLOR	mm	REF.	MAT.	kg	COLOR	mm
<b>A</b>					<b>B</b>					<b>C</b>					<b>D</b>					<b>BRAKE</b>				
a1	8001/U	70	ORANGE	415	b1	8001/U	70	ORANGE	387	c1	8001/U	70	BLUE	313	d1	DC	35	WHT	436	br1	DC	35	WHT	838
a2	8001/U	70	ORANGE	381	b2	8001/U	70	ORANGE	351	c2	8001/U	70	BLUE	279	d2	DC	35	WHT	402	br2	DC	35	WHT	683
a3	8001/U	70	ORANGE	380	b3	8001/U	70	ORANGE	351	c3	8001/U	70	BLUE	280	d3	DC	35	WHT	401	br3	DC	35	WHT	716
a4	8001/U	70	ORANGE	399	b4	8001/U	70	ORANGE	372	c4	8001/U	70	BLUE	298	d4	DC	35	WHT	416	br4	DC	35	WHT	785
a5	8001/U	70	ORANGE	383	b5	8001/U	70	ORANGE	358	c5	8001/U	70	BLUE	292	d5	DC	35	WHT	276	br5	DC	35	WHT	764
a6	8001/U	70	ORANGE	343	b6	8001/U	70	ORANGE	317	c6	8001/U	70	BLUE	253	d6	DC	35	WHT	237	br6	DC	35	WHT	580
a7	8001/U	70	ORANGE	350	b7	8001/U	70	ORANGE	325	c7	8001/U	70	BLUE	262	d7	DC	35	WHT	305	br7	DC	35	WHT	623
a8	8001/U	70	ORANGE	348	b8	8001/U	70	ORANGE	327	c8	8001/U	70	BLUE	266	d8	DC	35	WHT	302	br8	DC	35	WHT	699
a9	8001/U	70	ORANGE	306						c9	8001/U	70	BLUE	255	d9	DC	35	WHT	259	br9	DC	40	WHT	648
a10	8001/U	50	ORANGE	254						c10	8001/U	50	BLUE	225	d10	DC	35	WHT	219	br10	DC	40	WHT	542
a11	8001/U	50	ORANGE	282						c11	8001/U	50	BLUE	235						br11	DC	40	WHT	431
a12	8001/U	50	ORANGE	255						c12	8001/U	50	BLUE	210						br12	DC	40	WHT	461
a13	8001/U	50	ORANGE	246						c13	8001/U	50	BLUE	210										
a14	8001/U	50	ORANGE	270						c14	8001/U	50	BLUE	206										
a15	DC	40	WHT	539						c15	DC	40	WHT	541										
a16	DC	40	WHT	494						c16	DC	40	WHT	525										
<hr/>																								
2A1	8001/U	190	ORANGE	1650						2C1	8001/U	90	Blue	1272	D1	50	BLUE	407	2BR1	DC	35	Wht	970	
2A2	8001/U	190	ORANGE	1631						2C2	8001/U	90	BLUE	1261	D2	50	BLUE	396	2BR2	DC	35	WHT	842	
2A3	8001/U	190	ORANGE	1544						2C3	8001/U	90	BLUE	1245	D3	50	BLUE	437	2BR3	DC	35	WHT	736	
2A4	8001/U	190	ORANGE	1471						2C4	8001/U	90	BLUE	1253	D4	50	BLUE	288	2BR4	DC	40	WHT	631	
2A5	8001/U	130	ORANGE	1757						2C5	8001/U	90	BLUE	2781	D5	50	BLUE	482	2BR5	DC	40	WHT	715	
2A6	8001/U	70	ORANGE	860						2C6	8001/U	90	BLUE	1624					2BR6	DC	40	WHT	763	
2A7	8001/U	50	ORANGE	850						C1	8001/U	70	BLUE	451					3BR1	8001/U	50	ORANGE	3073	
3A3	8001/U	90	ORANGE	748						C2	8001/U	70	BLUE	440					3BR2	8001/U	50	ORANGE	3020	
										C3	8001/U	70	BLUE	350					3BR3	8001/U	50	ORANGE	2815	
										C4	8001/U	70	BLUE	272										
										C5	8001/U	70	BLUE	411										
										C6	8001/U	70	BLUE	1456										
										C7	8001/U	50	BLUE	1406										
										STAB	8001/U	50	BLUE	5406										
<hr/>																								
3A1	8001/U	340	ORANGE	4653						3C1	8001/U	190	BLUE	4631					BRMAIN	TARAX	200	RED	2624	
3A2	8001/U	340	ORANGE	4690						3C2	8001/U	190	BLUE	4690										
4A1	8001/U	190	ORANGE	4291						3C3	8001/U	130	BLUE	2875					KNOT POINT:				2424	



# LINES

## KLIMBER 3 P 21

REF.	MAT.	kg	COLOR	mm	REF.	MAT.	kg	COLOR	mm	REF.	MAT.	kg	COLOR	mm	REF.	MAT.	kg	COLOR	mm	REF.	MAT.	kg	COLOR	mm
<b>A</b>					<b>B</b>					<b>C</b>					<b>D</b>					<b>BRAKE</b>				
a1	8001/U	70	ORANGE	427	b1	8001/U	70	ORANGE	399	c1	8001/U	70	BLUE	322	d1	DC	35	WHT	448	br1	DC	35	WHT	863
a2	8001/U	70	ORANGE	391	b2	8001/U	70	ORANGE	361	c2	8001/U	70	BLUE	287	d2	DC	35	WHT	413	br2	DC	35	WHT	702
a3	8001/U	70	ORANGE	391	b3	8001/U	70	ORANGE	361	c3	8001/U	70	BLUE	288	d3	DC	35	WHT	413	br3	DC	35	WHT	738
a4	8001/U	70	ORANGE	410	b4	8001/U	70	ORANGE	383	c4	8001/U	70	BLUE	307	d4	DC	35	WHT	428	br4	DC	35	WHT	807
a5	8001/U	70	ORANGE	395	b5	8001/U	70	ORANGE	368	c5	8001/U	70	BLUE	301	d5	DC	35	WHT	284	br5	DC	35	WHT	787
a6	8001/U	70	ORANGE	352	b6	8001/U	70	ORANGE	326	c6	8001/U	70	BLUE	260	d6	DC	35	WHT	244	br6	DC	35	WHT	596
a7	8001/U	70	ORANGE	361	b7	8001/U	70	ORANGE	334	c7	8001/U	70	BLUE	270	d7	DC	35	WHT	314	br7	DC	35	WHT	642
a8	8001/U	70	ORANGE	358	b8	8001/U	70	ORANGE	336	c8	8001/U	70	BLUE	273	d8	DC	35	WHT	311	br8	DC	35	WHT	719
a9	8001/U	70	ORANGE	315						c9	8001/U	70	BLUE	263	d9	DC	35	WHT	267	br9	DC	40	WHT	667
a10	8001/U	50	ORANGE	261						c10	8001/U	50	BLUE	232	d10	DC	35	WHT	225	br10	DC	40	WHT	557
a11	8001/U	50	ORANGE	290						c11	8001/U	50	BLUE	242						br11	DC	40	WHT	444
a12	8001/U	50	ORANGE	262						c12	8001/U	50	BLUE	216						br12	DC	40	WHT	474
a13	8001/U	50	ORANGE	253						c13	8001/U	50	BLUE	217										
a14	8001/U	50	ORANGE	278						c14	8001/U	50	BLUE	212										
a15	DC	40	WHT	555						c15	DC	40	WHT	557										
a16	DC	40	WHT	508						c16	DC	40	WHT	540										
2A1	8001/U	190	ORANGE	1699						2C1	8001/U	90	Blue	1309	D1	8001/U	50	BLUE	418	2BR1	DC	35	Wht	1.000
2A2	8001/U	190	ORANGE	1677						2C2	8001/U	90	BLUE	1297	D2	8001/U	50	BLUE	407	2BR2	DC	35	WHT	865
2A3	8001/U	190	ORANGE	1589						2C3	8001/U	90	BLUE	1282	D3	8001/U	50	BLUE	450	2BR3	DC	35	WHT	758
2A4	8001/U	190	ORANGE	1512						2C4	8001/U	90	BLUE	1288	D4	8001/U	50	BLUE	297	2BR4	DC	1	WHT	648
2A5	8001/U	130	ORANGE	1809						2C5	8001/U	90	BLUE	2857	D5	8001/U	50	BLUE	496	2BR5	DC	40	WHT	737
2A6	8001/U	70	ORANGE	885						2C6	8001/U	90	BLUE	1668						2BR6	DC	40	WHT	784
2A7	8001/U	50	ORANGE	874						C1	8001/U	70	BLUE	465						3BR1	8001/U	50	ORANGE	3166
3A3	8001/U	90	ORANGE	768						C2	8001/U	70	BLUE	453						3BR2	8001/U	50	ORANGE	3107
										C3	8001/U	70	BLUE	361						3BR3	8001/U	50	ORANGE	2902
										C4	8001/U	70	BLUE	280										
										C5	8001/U	70	BLUE	423										
										C6	8001/U	70	BLUE	1495										
										C7	8001/U	50	BLUE	1442										
										STAB	8001/U	50	BLUE	5564										
3A1	8001/U	340	ORANGE	4801						3C1	8001/U	190	BLUE	4779						BRMAIN	TARAX	200	RED	2703
3A2	8001/U	340	ORANGE	4835						3C2	8001/U	190	BLUE	4835										
4A1	8001/U	190	ORANGE	4421						3C3	8001/U	130	BLUE	2969						KNOT POINT:				2503

# LINES

## KLIMBER 3 P 23

REF.	MAT.	kg	COLOR	mm	REF.	MAT.	kg	COLOR	mm	REF.	MAT.	kg	COLOR	mm	REF.	MAT.	kg	COLOR	mm	REF.	MAT.	kg	COLOR	mm
A					B					C					D					BRAKE				
a1	8001/U	70	ORANGE	441	b1	8001/U	70	ORANGE	412	c1	8001/U	70	BLUE	333	d1	DC	35	WHT	464	br1	DC	35	WHT	893
a2	8001/U	70	ORANGE	405	b2	8001/U	70	ORANGE	374	c2	8001/U	70	BLUE	297	d2	DC	35	WHT	428	br2	DC	35	WHT	727
a3	8001/U	70	ORANGE	405	b3	8001/U	70	ORANGE	374	c3	8001/U	70	BLUE	298	d3	DC	35	WHT	427	br3	DC	35	WHT	763
a4	8001/U	70	ORANGE	424	b4	8001/U	70	ORANGE	396	c4	8001/U	70	BLUE	318	d4	DC	35	WHT	443	br4	DC	35	WHT	835
a5	8001/U	70	ORANGE	408	b5	8001/U	70	ORANGE	381	c5	8001/U	70	BLUE	311	d5	DC	35	WHT	294	br5	DC	35	WHT	814
a6	8001/U	70	ORANGE	365	b6	8001/U	70	ORANGE	337	c6	8001/U	70	BLUE	269	d6	DC	35	WHT	252	br6	DC	35	WHT	617
a7	8001/U	70	ORANGE	373	b7	8001/U	70	ORANGE	346	c7	8001/U	70	BLUE	279	d7	DC	35	WHT	324	br7	DC	35	WHT	664
a8	8001/U	70	ORANGE	371	b8	8001/U	70	ORANGE	347	c8	8001/U	70	BLUE	283	d8	DC	35	WHT	322	br8	DC	35	WHT	744
a9	8001/U	70	ORANGE	326						c9	8001/U	70	BLUE	272	d9	DC	35	WHT	276	br9	DC	40	WHT	689
a10	8001/U	50	ORANGE	270						c10	8001/U	50	BLUE	240	d10	DC	35	WHT	233	br10	DC	40	WHT	577
a11	8001/U	50	ORANGE	300						c11	8001/U	50	BLUE	251						br11	DC	40	WHT	459
a12	8001/U	50	ORANGE	271						c12	8001/U	50	BLUE	223						br12	DC	40	WHT	491
a13	8001/U	50	ORANGE	262						c13	8001/U	50	BLUE	224										
a14	8001/U	50	ORANGE	288						c14	8001/U	50	BLUE	219										
a15	DC	40	WHT	574						c15	DC	40	WHT	576										
a16	DC	40	WHT	525						c16	DC	40	WHT	558										
2A1	8001/U	190	ORANGE	1756						2C1	8001/U	90	Blue	1354	D1	8001/U	50	BLUE	433	2BR1	DC	35	Wht	1.033
2A2	8001/U	190	ORANGE	1736						2C2	8001/U	90	BLUE	1342	D2	8001/U	50	BLUE	421	2BR2	DC	35	WHT	895
2A3	8001/U	190	ORANGE	1643						2C3	8001/U	90	BLUE	1326	D3	8001/U	50	BLUE	465	2BR3	DC	35	WHT	784
2A4	8001/U	190	ORANGE	1565						2C4	8001/U	90	BLUE	1333	D4	8001/U	50	BLUE	307	2BR4	DC	40	WHT	671
2A5	8001/U	130	ORANGE	1871						2C5	8001/U	90	BLUE	2955	D5	8001/U	50	BLUE	513	2BR5	DC	40	WHT	761
2A6	8001/U	70	ORANGE	916						2C6	8001/U	90	BLUE	1726						2BR6	DC	40	WHT	812
2A7	8001/U	50	ORANGE	904						C1	8001/U	70	BLUE	481						3BR1	8001/U	50	ORANGE	3273
3A3	8001/U	90	ORANGE	795						C2	8001/U	70	BLUE	469						3BR2	8001/U	50	ORANGE	3214
										C3	8001/U	70	BLUE	373						3BR3	8001/U	50	ORANGE	3005
										C4	8001/U	70	BLUE	290										
										C5	8001/U	70	BLUE	438										
										C6	8001/U	70	BLUE	1547										
										C7	8001/U	50	BLUE	1492										
										STAB	8001/U	50	BLUE	5777										
3A1	8001/U	340	ORANGE	4983						3C1	8001/U	190	BLUE	4961						BRMAIN	TARAX	200	RED	2810
3A2	8001/U	340	ORANGE	5021						3C2	8001/U	190	BLUE	5021										
4A1	8001/U	190	ORANGE	4594						3C3	8001/U	130	BLUE	3092						KNOT POINT:				2610

# LINE MEASUREMENTS

## KLIMBER 3 P - 20

LINES HEIGHT MM

	A	B	C	D	br
1	7212	7184	7156	7238	7390
2	7178	7148	7122	7204	7235
3	7158	7129	7101	7181	7140
4	7177	7150	7119	7196	7209
5	7111	7086	7066	7140	7029
6	7071	7045	7027	7101	6845
7	7005	6980	6966	7028	6783
8	7003	6982	6970	7025	6859
9	6853		6816	6895	6697
10	6802		6787	6855	6591
11	6679		6687		6528
12	6652		6662		6558
13	6634		6613		
14	6658		6609		
15	6459		6461		
16	6414		6445		

## KLIMBER 3 P - 21

	A	B	C	D	br
1	7418	7390	7363	7445	7617
2	7382	7352	7328	7410	7456
3	7360	7330	7305	7387	7357
4	7379	7352	7324	7402	7426
5	7310	7283	7267	7342	7240
6	7267	7241	7226	7302	7049
7	7199	7172	7161	7225	6985
8	7196	7174	7164	7222	7062
9	7042		7005	7086	6894
10	6989		6975	7044	6784
11	6860		6870		6718
12	6832		6844		6748
13	6813		6793		
14	6838		6788		
15	6631		6633		
16	6584		6616		

## KLIMBER 3 P - 23

	A	B	C	D	br
1	7674	7645	7618	7704	7894
2	7638	7607	7582	7668	7728
3	7618	7587	7559	7643	7626
4	7637	7609	7579	7659	7698
5	7566	7539	7520	7598	7507
6	7523	7495	7478	7556	7310
7	7453	7426	7412	7477	7244
8	7451	7427	7416	7475	7324
9	7291		7251	7334	7150
10	7236		7220	7291	7038
11	7104		7113		6971
12	7075		7085		7003
13	7055		7032		
14	7081		7027		
15	6866		6868		
16	6817		6850		

# SUSPENSION

MATERIAL CODE		DC	DC	A-8001/U	A-8001/U	A-8001/U	A-8001/U	A-8001/U	A-8001/U	TARAX
STRENGTH CODE		035	040	50	70	90	130	190	340	200
DIAMETER mm	∅	0,38	0,5	0,5	0,7	0,8	0,9	1,1	1,5 X 1,9	1,7
CORE MATERIAL		DYNEEMA	DYNEEMA	ARAMID	ARAMID	ARAMID	ARAMID	ARAMID	ARAMID	DYNEEMA
SLEEVE MATERIAL		NO	NO	NO	NO	NO	NO	NO	NO	POLYESTER
WEIGHT G/M	TOTAL	0,11	0,19	0,25	0,4	0,5	0,8	1,1	2,2	2
BREAKING STRENGTH daN	MINIMUM	35	40	50	70	90	130	190	340	200
	MAXIMUM	38	48							
STRENGTH AFTER										
5.000 BENDING	TEST EN	33	33	26	39	49	88	52	196,6	
CYCLES										
ELONGATION AT	5 daN en %			0,4	0,5	0,4	0,4	0,4	0,2	0,1-0,3
	10 daN en %	0,77		0,7	0,7	0,6	0,6	0,6	0,3	0,2-0,6
	15 daN en %			1,1	1	0,8	0,8	0,7	0,4	0,3-0,7
	20 daN en %			1,5	1,3	1	0,9	0,9	0,5	0,3-0,9
	25 daN en %			1,9	1,5	1,3	1	1	0,6	0,4-1
	30 daN en %			3,3	2,8	2,3	1,8	1,6		
	75 daN en %				3,7	3,2	3,1	2,7	1,5	0,8-1,7
	100 daN en %							2,6	1,9	1,2-2
	125 daN en %							3,5		
	150 daN en %							4,3	2,6	1,6-2,4
	175 daN en %									
	200 daN en %								3,1	2-2,8
ELONGATION MAX. BREAKING STRENGTH %				3,8	3,9	4,3	4	4,4		

# PULLEY

## DESCRIPTION

PULLEY	20 m/m
CODE	RF25109
MATERIALS	STAINLESS STEEL
	NYLON
	CARBON ACETAL
BEARING	DELRIN®
WEIGHT	9 G/PIECE

## TECHNICAL SPECIFICATIONS

DIMENSIONS	m/m
A	32
B	20
Ø	6 max
LOAD	KG
WORKING LIMIT	250
BREAKING	550



## THREAD

### WING MAKING

NAME	SERAFIL
N° OF REFERENCE	60
MATERIAL	POLYESTER
TYPE OF FINISH	SILK
LINEAR DENSITY	NM 61 / 3 (DTEX 163 * 3)
BREAKING STRENGTH	3,000 CN
ELONGATION	17,00%

### QUALITIES SERAFIL

SOLIDITY ARTIFICIAL LIGTH	ISO 105 B02 > 5 - 6
SOLIDITY SWEAT	ISO 105 E04 > 4
SOLIDITY WASHING	ISO 105 C04 > 3
SOLIDITY GRAZE IN DRY	ISO 105 X12 > 4
SOLIDITY WASHING IN DRY	ISO 105 D01 > 3 - 4

TREATMENT WATER REPELLENT	WR
---------------------------	----

### RISERS MAKING

NAME	COATS BONDED C.F.P.
N° OF REFERENCE	V138
MATERIAL	POLYESTER
TYPE OF FINISH	SILK
BREAKING STRENGTH	9,5 KG
ELONGATION	19%

## RISERS

### RISERS

N° OF REFERENCE	CSAR7
MATERIAL	POLYESTER & TECHNORA
WIDTH	7 MM
THICKNESS	2,10 MM
BREAKING STRENGTH	600 DAN
ELONGATION	MAX. 8,1%
WEIGTH	13,6 G/M
COLOR	BLACK

### COLOR INDICATOR

N° OF REFERENCE	IC-G 1-2
MATERIAL	POLYESTER
WIDTH	70 M/M
THICKNESS	0,80 M/M
BREAKING STRENGTH	130 DN
ELONGATION	35 %
WEIGTH	32 G * L.M.
COLOR	GREEN

### LOOPS

N° OF REFERENCE	LKI - 10
MATERIAL	NYLON
WIDTH	10 M/M
BREAKING STRENGTH	84 KG
ELONGATION	30 %
WEIGTH	5,5 G/M
COLOR	WHITE





## Niviuk Paragliders

C/ Del Ter 6 - nave D

17165 La Cellera de Ter - Girona - Spain

+34 972 422 878 | [info@niviuk.com](mailto:info@niviuk.com)

[www.niviuk.com](http://www.niviuk.com)

