

**PIVIUK** BEYOND  
THE GLIDE



# ARTIK 6

Données *techniques*

# DONNÉES TECHNIQUES

			21	23	25	27
<b>Cells</b>	Number		66	66	66	66
<b>Aspect ratio</b>	Flat		6,3	6,3	6,3	6,3
<b>Area</b>	Flat	m <sup>2</sup>	21,5	23	24,5	27
	Projected	m <sup>2</sup>	18,33	19,61	20,89	23,02
<b>Span</b>	Flat	m	11,64	12,04	12,42	13,04
<b>Chord</b>	Max	m	11,68	12,23	12,75	13,25
<b>Lines</b>	Total	m	2,27	2,35	2,43	2,55
	Main		248	257	266	279
<b>Risers</b>	Number	3+1	2-1/4/2	2-1/4/2	2-1/4/2	2-1/4/2
	Accelerator	mm	A-A'/B/C	A-A'/B/C	A-A'/B/C	A-A'/B/C
<b>Weight in flight</b>	Min-Max	kg	160	200	200	200
<b>Glider weight</b>		kg	4,3	4,5	4,7	5,0
<b>Certification</b>			EN/LTF C	EN/LTF C	EN/LTF C	EN/LTF C

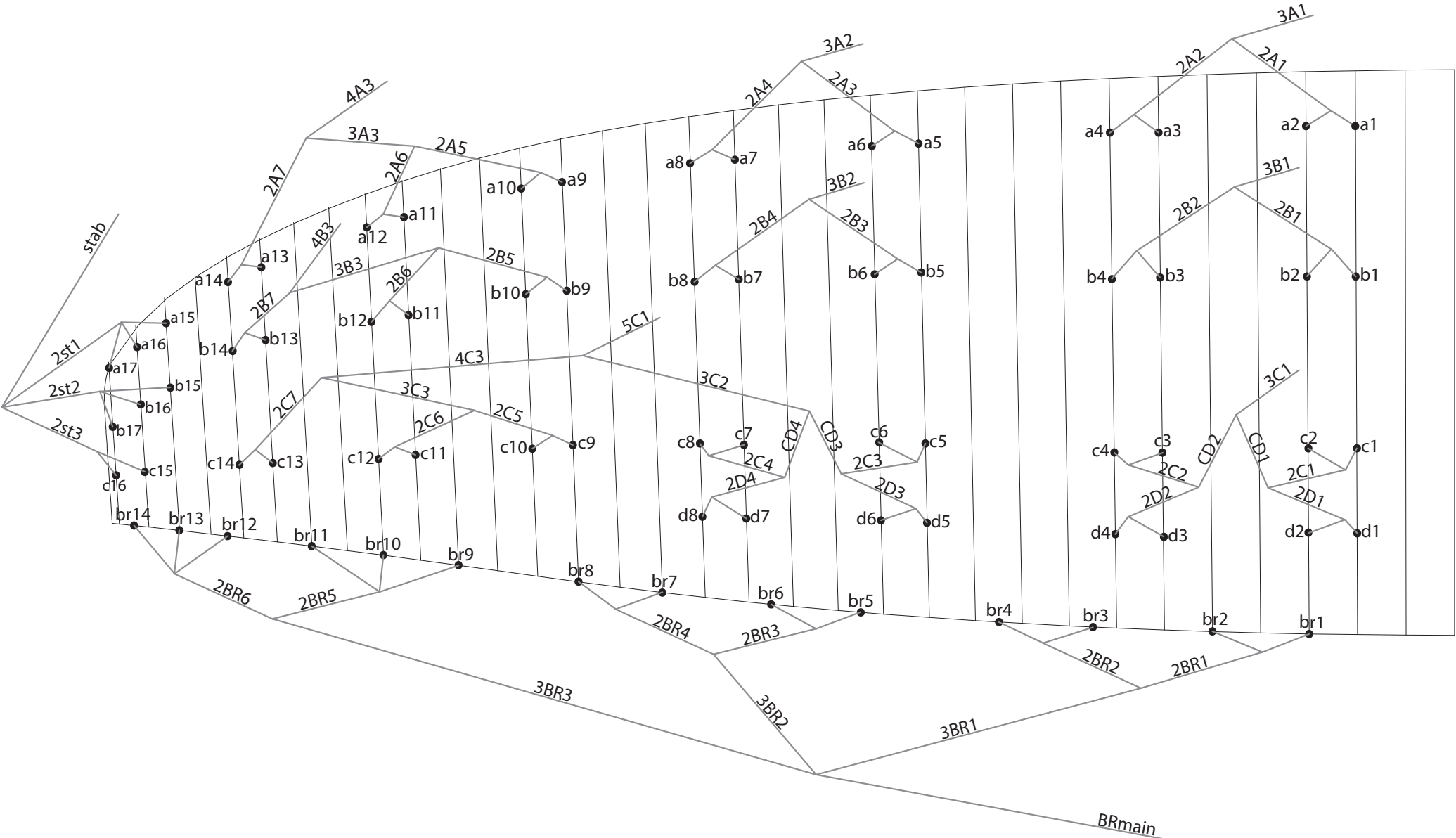
# MATERIAUX

VOILERIE	MATERIAUX	FABRICANT
UPPER SURFACE	30 DMF / N20 DMF	DOMINICO TEX CO (KOREA)
BOTTOM SURFACE	2044 32 PS	DOMINICO TEX CO (KOREA)
PROFILES	2044 32 FM	DOMINICO TEX CO (KOREA)
DIAGONALS	30 DFM / 2044 32 FM	DOMINICO TEX CO (KOREA)
LOOPS	LKI - 10	KOLON IND. (KOREA)
REINFORCEMENT LOOPS	RIPSTOP FABRIC	DOMINICO TEX CO (KOREA)
TRAILING EDGE REINFORCEMENT	MYLAR	D-P (GERMANY)
RIBS REINFORCEMENT	LTN-0.8 STICK	SPORTWARE CO.CHINA
THREAD	SERAFIL 60	AMAN (GERMANY)

SUSPENTAGE	MATERIAUX	FABRICANT
UPPER CASCADES	FABRIC CODE	LIROS GMHB (GERMANY)
UPPER CASCADES	DC - 60	LIROS GMHB (GERMANY)
UPPER CASCADES	DC - 40	LIROS GMHB (GERMANY)
MIDDLE CASCADES	DC - 60	LIROS GMHB (GERMANY)
MIDDLE CASCADES	DC - 40	EDELRID (GERMANY)
MIDDLE CASCADES	A-8000/U 70	EDELRID (GERMANY)
MIDDLE CASCADES	A-8000/U 90	EDELRID (GERMANY)
MIDDLE CASCADES	A-8000/U 130	EDELRID (GERMANY)
MIDDLE CASCADES	A-8000/U 90	EDELRID (GERMANY)
MAIN	A-8000/U 130	EDELRID (GERMANY)
MAIN	A-8000/U 190	EDELRID (GERMANY)
MAIN	A-8000/U 230	EDELRID (GERMANY)
MAIN	TARAX-200	AMAN (GERMANY)
MAIN	SERAFIL 60	EDELRID (GERMANY)
MAIN BREAK	TARAX-200	EDELRID (GERMANY)
THREAD	SERAFIL 60	AMAN (GERMANY)

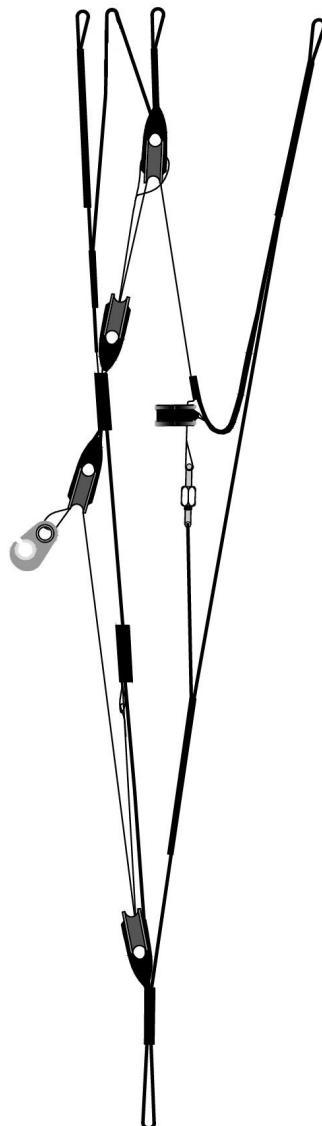
ÉLÉVATEURS	MATERIAUX	FABRICANT
MATERIAL	3455	COUSIN (FRANCE)
COLOR INDICATOR	210D	TECNI SANGLES (FRANCE)
THREAD	V138	COATS (ENGLAND)
MAILLONS	3.5	ANSUNG PRECISION (KOREA)
PULLEYS	RF25109	RONSTAN (AUSTRALIA)

# PLAN DE SUSPENTAGE



# SCHEMA SANGLES D'ÉLÉVATEURS

A	A'	B	C
3A1	4A3	3B1	3C1
3A2		3B2	5C1
		4B3	
		stab	



## DONNÉES TECHNIQUES DES COULEURS



<b>DISKUS</b>	SB1	SLATE BLUE	MAIN TOP	REF: 317
	SB2	WHITE	MAIN BOTTOM	REF: 001
	SB3	WHITE	HORN	REF: 001
	SB4	LIMA	PRINCIPAL SHADOW	REF: 500



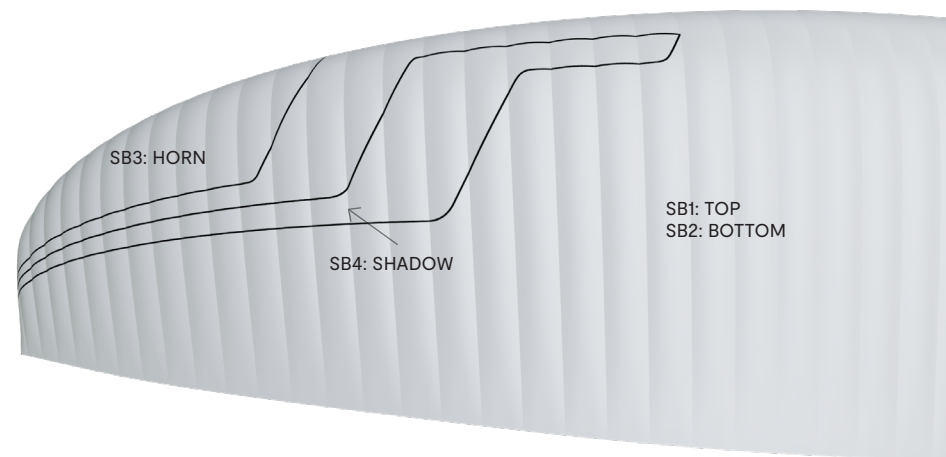
<b>DISKUS</b>	SB1	LIMA	MAIN TOP	REF: 500
	SB2	WHITE	MAIN BOTTOM	REF: 001
	SB3	PINK	HORN	REF: 19-2047
	SB4	BLACK	PRINCIPAL SHADOW	REF: 102



<b>OPAK</b>	SB1	DRAGON RED	MAIN TOP	REF: 636
	SB2	WHITE	MAIN BOTTOM	REF: 001
	SB3	SPECTRA GREEN	HORN	REF: 17-5335
	SB4	WHITE	PRINCIPAL SHADOW	REF: 001



<b>WASP</b>	SB1	GOLD	MAIN TOP	REF: 939
	SB2	WHITE	MAIN BOTTOM	REF: 001
	SB3	BLACK	HORN	REF: 317
	SB4	SPECTRA GREEN	PRINCIPAL SHADOW	REF: 17-5335



# CHARGE ALAIRE

## ARTIK R

21		23		25		27	
P.T.V.	KG/M2	P.T.V.	KG/M2	P.T.V.	KG/M2	P.T.V.	KG/M2
58	= 2,70	70	= 3,04	85	= 3,47	100	= 3,70
59	= 2,74	71	= 3,09	86	= 3,51	101	= 3,74
60	= 2,79	72	= 3,13	87	= 3,55	102	= 3,78
61	= 2,84	73	= 3,17	88	= 3,59	103	= 3,81
62	= 2,88	74	= 3,22	89	= 3,63	104	= 3,85
63	= 2,93	75	= 3,26	90	= 3,67	105	= 3,89
64	= 2,98	76	= 3,30	91	= 3,71	106	= 3,93
65	= 3,02	77	= 3,35	92	= 3,76	107	= 3,96
66	= 3,07	78	= 3,39	93	= 3,80	108	= 4,00
67	= 3,12	79	= 3,43	94	= 3,84	109	= 4,04
68	= 3,16	80	= 3,48	95	= 3,88	110	= 4,07
69	= 3,21	81	= 3,52	96	= 3,92	111	= 4,11
70	= 3,26	82	= 3,57	97	= 3,96	112	= 4,15
71	= 3,30	83	= 3,61	98	= 4,00	113	= 4,19
72	= 3,35	84	= 3,65	99	= 4,04	114	= 4,22
73	= 3,40	85	= 3,70	100	= 4,08	115	= 4,26
74	= 3,44	86	= 3,74	101	= 4,12	116	= 4,30
75	= 3,49	87	= 3,78	102	= 4,16	117	= 4,33
		88	= 3,83	103	= 4,20	118	= 4,37
		89	= 3,87	104	= 4,24	119	= 4,41
		90	= 3,91	105	= 4,29	120	= 4,44
						121	= 4,48
						122	= 4,48

# SUSPENTES

## ARTIK 6 21

REF.	MAT.	kg	COLOR	mm	REF.	MAT.	kg	COLOR	mm	REF.	MAT.	kg	COLOR	mm	REF.	MAT.	kg	COLOR	mm	REF.	MAT.	kg	COLOR	mm
<b>A</b>					<b>B</b>					<b>C</b>					<b>D</b>					<b>BRAKE</b>				
a1	DC	60	WHT	285	b1	DC	60	WHT	283	c1	DC	40	WHT	284	d1	DC	40	WHT	285	br1	DC	40	WHT	622
a2	DC	60	WHT	249	b2	DC	60	WHT	246	c2	DC	40	WHT	244	d2	DC	40	WHT	247	br2	DC	40	WHT	362
a3	DC	60	WHT	262	b3	DC	60	WHT	260	c3	DC	40	WHT	257	d3	DC	40	WHT	260	br3	DC	40	WHT	594
a4	DC	60	WHT	271	b4	DC	60	WHT	268	c4	DC	40	WHT	272	d4	DC	40	WHT	271	br4	DC	40	WHT	586
a5	DC	60	WHT	270	b5	DC	60	WHT	267	c5	DC	40	WHT	272	d5	DC	40	WHT	274	br5	DC	40	WHT	599
a6	DC	60	WHT	233	b6	DC	60	WHT	230	c6	DC	40	WHT	217	d6	DC	40	WHT	218	br6	DC	40	WHT	463
a7	DC	60	WHT	238	b7	DC	40	WHT	234	c7	DC	40	WHT	242	d7	DC	40	WHT	251	br7	DC	40	WHT	516
a8	DC	60	WHT	248	b8	DC	40	WHT	245	c8	DC	40	WHT	241	d8	DC	40	WHT	233	br8	DC	40	WHT	536
a9	DC	40	WHT	271	b9	DC	40	WHT	267	c9	DC	40	WHT	266						br9	DC	40	WHT	721
a10	DC	40	WHT	210	b10	DC	40	WHT	208	c10	DC	40	WHT	221						br10	DC	40	WHT	616
a11	DC	40	WHT	258	b11	DC	40	WHT	250	c11	DC	40	WHT	222						br11	DC	40	WHT	634
a12	DC	40	WHT	247	b12	DC	40	WHT	242	c12	DC	40	WHT	258						br12	DC	40	WHT	399
a13	DC	40	WHT	250	b13	DC	40	WHT	237	c13	DC	40	WHT	212						br13	DC	40	WHT	425
a14	DC	40	WHT	253	b14	DC	40	Wht	243	c14	DC	40	WHT	246						br14	DC	40	Wht	519
a15	DC	40	WHT	603	b15	DC	40	Wht	547	c15	DC	40	WHT	252										
a16	DC	40	WHT	548	b16	DC	40	Wht	504	c16	DC	40	WHT	240										
a17	DC	40	Wht	537	b17	DC	40	Wht	509															
2A1	8000/U	130	NATURAL	1785	2B1	8000/U	130	NATURAL	1770	2C1	8000/U	70	NATURAL	915	2D1	8000/U	70	NATURAL	984	2BR1	DC	40	WHT	1.020
2A2	8000/U	130	NATURAL	1731	2B2	8000/U	130	NATURAL	1714	2C2	8000/U	70	NATURAL	893	2D2	8000/U	70	NATURAL	960	2BR2	DC	40	WHT	638
2A3	8000/U	130	NATURAL	1633	2B3	8000/U	130	NATURAL	1613	2C3	8000/U	70	NATURAL	851	2D3	8000/U	70	NATURAL	916	2BR3	DC	40	WHT	965
2A4	8000/U	90	NATURAL	1565	2B4	8000/U	90	NATURAL	1549	2C4	8000/U	70	NATURAL	783	2D4	8000/U	70	NATURAL	840	2BR4	DC	40	WHT	828
2A5	8000/U	70	NATURAL	1397	2B5	8000/U	70	NATURAL	1365	2C5	8000/U	70	NATURAL	849						2BR5	DC	40	WHT	758
2A6	8000/U	70	NATURAL	1236	2B6	8000/U	70	NATURAL	1221	2C6	8000/U	70	NATURAL	830						2BR6	DC	40	WHT	971
2A7	8000/U	70	NATURAL	1979	2B7	8000/U	70	NATURAL	1942	2C7	8000/U	70	NATURAL	1650						3BR1	DC	60	WHT	2985
3A3	8000/U	130	NATURAL	830	3B3	8000/U	90	Natural	789	CD1	8000/U	130	NATURAL	684						3BR2	DC	60	WHT	2471
					2ST1	DC	40	WHT	1059	CD2	8000/U	130	NATURAL	654						3BR3	DC	60	WHT	2282
					2ST2	DC	40	WHT	1095	CD3	8000/U	130	NATURAL	651										
					2ST3	DC	40	WHT	1403	CD4	8000/U	90	NATURAL	590										
					STAB	8000/U	90	NATURAL	4262	3C2	8000/U	130	NATURAL	1663										
										3C3	8000/U	90	NATURAL	766										
										4C3	8000/U	90	NATURAL	1349										
3A1	8000/U	230	NATURAL	4609	3B1	8000/U	190	NATURAL	4570	3C1	8000/U	190	NATURAL	4812						BRmain	Tarax	200	Red	3052
3A2	8000/U	190	NATURAL	4631	3B2	8000/U	130	NATURAL	4589	5C1	8000/U	190	NATURAL	3167									knot point:	2852
4A3	8000/U	130	NATURAL	3863	4B3	8000/U	90	NATURAL	3888															



# SUSPENTES

## ARTIK 6 23

REF.	MAT.	kg	COLOR	mm	REF.	MAT.	kg	COLOR	mm	REF.	MAT.	kg	COLOR	mm	REF.	MAT.	kg	COLOR	mm	REF.	MAT.	kg	COLOR	mm
<b>A</b>					<b>B</b>					<b>C</b>					<b>D</b>					<b>BRAKE</b>				
a1	DC	60	WHT	295	b1	DC	60	WHT	292	c1	DC	40	WHT	294	d1	DC	40	WHT	294	br1	DC	40	WHT	644
a2	DC	60	WHT	258	b2	DC	60	WHT	255	c2	DC	40	WHT	253	d2	DC	40	WHT	256	br2	DC	40	WHT	375
a3	DC	60	WHT	271	b3	DC	60	WHT	268	c3	DC	40	WHT	266	d3	DC	40	WHT	269	br3	DC	40	WHT	614
a4	DC	60	WHT	280	b4	DC	60	WHT	278	c4	DC	40	WHT	281	d4	DC	40	WHT	281	br4	DC	40	WHT	606
a5	DC	60	WHT	279	b5	DC	60	WHT	276	c5	DC	40	WHT	281	d5	DC	40	WHT	283	br5	DC	40	WHT	620
a6	DC	60	WHT	241	b6	DC	60	WHT	238	c6	DC	40	WHT	224	d6	DC	40	WHT	226	br6	DC	40	WHT	479
a7	DC	60	WHT	246	b7	DC	40	WHT	242	c7	DC	40	WHT	250	d7	DC	40	WHT	259	br7	DC	40	WHT	533
a8	DC	60	WHT	256	b8	DC	40	WHT	254	c8	DC	40	WHT	249	d8	DC	40	WHT	241	br8	DC	40	WHT	554
a9	DC	40	WHT	280	b9	DC	40	WHT	276	c9	DC	40	WHT	275						br9	DC	40	WHT	745
a10	DC	40	WHT	217	b10	DC	40	WHT	216	c10	DC	40	WHT	229						br10	DC	40	WHT	637
a11	DC	40	WHT	267	b11	DC	40	WHT	258	c11	DC	40	WHT	230						br11	DC	40	WHT	656
a12	DC	40	WHT	256	b12	DC	40	WHT	250	c12	DC	40	WHT	267						br12	DC	40	WHT	413
a13	DC	40	WHT	259	b13	DC	40	WHT	245	c13	DC	40	WHT	220						br13	DC	40	WHT	440
a14	DC	40	WHT	261	b14	DC	40	Wht	251	c14	DC	40	WHT	255						br14	DC	40	Wht	537
a15	DC	40	WHT	624	b15	DC	40	Wht	566	c15	DC	40	WHT	261										
a16	DC	40	WHT	566	b16	DC	40	Wht	521	c16	DC	40	WHT	248										
a17	DC	40	Wht	555	b17	DC	40	Wht	526															
2A1	8000/U	130	NATURAL	1845	2B1	8000/U	130	NATURAL	1830	2C1	8000/U	70	NATURAL	946	2D1	8000/U	70	NATURAL	1018	2BR1	DC	40	WHT	1054
2A2	8000/U	130	NATURAL	1792	2B2	8000/U	130	NATURAL	1774	2C2	8000/U	70	NATURAL	924	2D2	8000/U	70	NATURAL	993	2BR2	DC	40	WHT	661
2A3	8000/U	130	NATURAL	1688	2B3	8000/U	130	NATURAL	1668	2C3	8000/U	70	NATURAL	880	2D3	8000/U	70	NATURAL	947	2BR3	DC	40	WHT	998
2A4	8000/U	90	NATURAL	1619	2B4	8000/U	90	NATURAL	1603	2C4	8000/U	70	NATURAL	810	2D4	8000/U	70	NATURAL	868	2BR4	DC	40	WHT	857
2A5	8000/U	70	NATURAL	1445	2B5	8000/U	70	NATURAL	1412	2C5	8000/U	70	NATURAL	878						2BR5	DC	40	WHT	783
2A6	8000/U	70	NATURAL	1279	2B6	8000/U	70	NATURAL	1264	2C6	8000/U	70	NATURAL	858						2BR6	DC	40	WHT	1005
2A7	8000/U	70	NATURAL	2047	2B7	8000/U	70	NATURAL	2009	2C7	8000/U	70	NATURAL	1706						3BR1	DC	60	WHT	3085
3A3	8000/U	130	NATURAL	859	3B3	8000/U	90	Natural	816	CD1	8000/U	130	NATURAL	707						3BR2	DC	60	WHT	2556
					2ST1	DC	40	WHT	1096	CD2	8000/U	130	NATURAL	677						3BR3	DC	60	WHT	2364
					2ST2	DC	40	WHT	1132	CD3	8000/U	130	NATURAL	673										
					2ST3	DC	40	WHT	1451	CD4	8000/U	90	NATURAL	611										
					STAB	8000/U	90	NATURAL	4430	3C2	8000/U	130	NATURAL	1730										
										3C3	8000/U	90	NATURAL	792										
										4C3	8000/U	90	NATURAL	1407										
3A1	8000/U	230	NATURAL	4784	3B1	8000/U	190	NATURAL	4744	3C1	8000/U	190	NATURAL	4994						BRmain	Tarax	200	Red	3164
3A2	8000/U	190	NATURAL	4810	3B2	8000/U	130	NATURAL	4767	5C1	8000/U	190	NATURAL	3286									knot point:	2964
4A3	8000/U	130	NATURAL	4017	4B3	8000/U	90	NATURAL	4044															

# SUSPENTES

## ARTIK 6 25

REF.	MAT.	kg	COLOR	mm	REF.	MAT.	kg	COLOR	mm	REF.	MAT.	kg	COLOR	mm	REF.	MAT.	kg	COLOR	mm	REF.	MAT.	kg	COLOR	mm	
<b>A</b>					<b>B</b>					<b>C</b>					<b>D</b>					<b>BRAKE</b>					
a1	DC	60	WHT	304	b1	DC	60	WHT	301	c1	DC	40	WHT	303	d1	DC	40	WHT	304	br1	DC	40	WHT	665	
a2	DC	60	WHT	266	b2	DC	60	WHT	264	c2	DC	40	WHT	262	d2	DC	40	WHT	264	br2	DC	40	WHT	387	
a3	DC	60	WHT	279	b3	DC	60	WHT	277	c3	DC	40	WHT	274	d3	DC	40	WHT	277	br3	DC	40	WHT	633	
a4	DC	60	WHT	290	b4	DC	60	WHT	287	c4	DC	40	WHT	290	d4	DC	40	WHT	290	br4	DC	40	WHT	626	
a5	DC	60	WHT	288	b5	DC	60	WHT	284	c5	DC	40	WHT	290	d5	DC	40	WHT	292	br5	DC	40	WHT	639	
a6	DC	60	WHT	249	b6	DC	60	WHT	246	c6	DC	40	WHT	232	d6	DC	40	WHT	233	br6	DC	40	WHT	495	
a7	DC	60	WHT	254	b7	DC	40	WHT	250	c7	DC	40	WHT	258	d7	DC	40	WHT	268	br7	DC	40	WHT	550	
a8	DC	60	WHT	265	b8	DC	40	WHT	262	c8	DC	40	WHT	257	d8	DC	40	WHT	249	br8	DC	40	WHT	572	
a9	DC	40	WHT	289	b9	DC	40	WHT	285	c9	DC	40	WHT	284							br9	DC	40	WHT	769
a10	DC	40	WHT	224	b10	DC	40	WHT	222	c10	DC	40	WHT	236							br10	DC	40	WHT	658
a11	DC	40	WHT	276	b11	DC	40	WHT	266	c11	DC	40	WHT	237							br11	DC	40	WHT	678
a12	DC	40	WHT	264	b12	DC	40	WHT	258	c12	DC	40	WHT	275							br12	DC	40	WHT	426
a13	DC	40	WHT	267	b13	DC	40	WHT	253	c13	DC	40	WHT	226							br13	DC	40	WHT	454
a14	DC	40	WHT	270	b14	DC	40	Wht	259	c14	DC	40	WHT	263							br14	DC	40	WHT	554
a15	DC	40	WHT	644	b15	DC	40	Wht	584	c15	DC	40	WHT	269											
a16	DC	40	WHT	585	b16	DC	40	Wht	538	c16	DC	40	WHT	256											
a17	DC	40	Wht	573	b17	DC	40	Wht	543																
2A1	8000/U	130	NATURAL	1904	2B1	8000/U	130	NATURAL	1888	2C1	8000/U	70	NATURAL	976	2D1	8000/U	70	NATURAL	1051	2BR1	DC	40	WHT	1.088	
2A2	8000/U	130	NATURAL	1850	2B2	8000/U	130	NATURAL	1832	2C2	8000/U	70	NATURAL	953	2D2	8000/U	70	NATURAL	1025	2BR2	DC	40	WHT	682	
2A3	8000/U	130	NATURAL	1742	2B3	8000/U	130	NATURAL	1721	2C3	8000/U	70	NATURAL	908	2D3	8000/U	70	NATURAL	977	2BR3	DC	40	WHT	1.029	
2A4	8000/U	90	NATURAL	1672	2B4	8000/U	90	NATURAL	1655	2C4	8000/U	70	NATURAL	836	2D4	8000/U	70	NATURAL	896	2BR4	DC	40	WHT	886	
2A5	8000/U	70	NATURAL	1491	2B5	8000/U	70	NATURAL	1458	2C5	8000/U	70	NATURAL	906							2BR5	DC	40	WHT	808
2A6	8000/U	70	NATURAL	1320	2B6	8000/U	70	NATURAL	1305	2C6	8000/U	70	NATURAL	886							2BR6	DC	40	WHT	1038
2A7	8000/U	70	NATURAL	2110	2B7	8000/U	70	NATURAL	2070	2C7	8000/U	70	NATURAL	1760							3BR1	DC	60	WHT	3182
3A3	8000/U	130	NATURAL	885	3B3	8000/U	90	Natural	841	CD1	8000/U	130	NATURAL	729							3BR2	DC	60	WHT	2638
					2ST1	DC	40	WHT	1131	CD2	8000/U	130	NATURAL	700							3BR3	DC	60	WHT	2443
					2ST2	DC	40	WHT	1169	CD3	8000/U	130	NATURAL	695											
					2ST3	DC	40	WHT	1498	CD4	8000/U	90	NATURAL	631											
					STAB	8000/U	90	NATURAL	4592	3C2	8000/U	130	NATURAL	1794											
										3C3	8000/U	90	NATURAL	818											
										4C3	8000/U	90	NATURAL	1462											
3A1	8000/U	230	NATURAL	4954	3B1	8000/U	190	NATURAL	4912	3C1	8000/U	190	NATURAL	5171							BRmain	Tarax	200	Red	3263
3A2	8000/U	190	NATURAL	4983	3B2	8000/U	130	NATURAL	4947	5C1	8000/U	190	NATURAL	3401										knot point:	3063
4A3	8000/U	130	NATURAL	4167	4B3	8000/U	90	NATURAL	4195																

# SUSPENTES

## ARTIK 6 27

REF.	MAT.	kg	COLOR	mm	REF.	MAT.	kg	COLOR	mm	REF.	MAT.	kg	COLOR	mm	REF.	MAT.	kg	COLOR	mm	REF.	MAT.	kg	COLOR	mm
<b>A</b>					<b>B</b>					<b>C</b>					<b>D</b>					<b>BRAKE</b>				
a1	DC	60	WHT	316	b1	DC	60	WHT	313	c1	DC	40	WHT	315	d1	DC	40	WHT	316	br1	DC	40	WHT	691
a2	DC	60	WHT	277	b2	DC	60	WHT	275	c2	DC	40	WHT	272	d2	DC	40	WHT	275	br2	DC	40	WHT	403
a3	DC	60	WHT	290	b3	DC	60	WHT	287	c3	DC	40	WHT	285	d3	DC	40	WHT	288	br3	DC	40	WHT	658
a4	DC	60	WHT	301	b4	DC	60	WHT	299	c4	DC	40	WHT	302	d4	DC	40	WHT	302	br4	DC	40	WHT	651
a5	DC	60	WHT	299	b5	DC	60	WHT	296	c5	DC	40	WHT	302	d5	DC	40	WHT	304	br5	DC	40	WHT	665
a6	DC	60	WHT	259	b6	DC	60	WHT	256	c6	DC	40	WHT	241	d6	DC	40	WHT	243	br6	DC	40	WHT	515
a7	DC	60	WHT	264	b7	DC	40	WHT	260	c7	DC	40	WHT	268	d7	DC	40	WHT	278	br7	DC	40	WHT	571
a8	DC	60	WHT	275	b8	DC	40	WHT	273	c8	DC	40	WHT	267	d8	DC	40	WHT	259	br8	DC	40	WHT	596
a9	DC	40	WHT	301	b9	DC	40	WHT	296	c9	DC	40	WHT	296						br9	DC	40	WHT	799
a10	DC	40	WHT	233	b10	DC	40	WHT	231	c10	DC	40	WHT	245						br10	DC	40	WHT	684
a11	DC	40	WHT	287	b11	DC	40	WHT	277	c11	DC	40	WHT	247						br11	DC	40	WHT	706
a12	DC	40	WHT	275	b12	DC	40	WHT	268	c12	DC	40	WHT	286						br12	DC	40	WHT	442
a13	DC	40	WHT	278	b13	DC	40	WHT	263	c13	DC	40	WHT	236						br13	DC	40	WHT	472
a14	DC	40	WHT	281	b14	DC	40	Wht	270	c14	DC	40	WHT	273						br14	DC	40	WHT	576
a15	DC	40	WHT	670	b15	DC	40	Wht	607	c15	DC	40	WHT	280										
a16	DC	40	WHT	608	b16	DC	40	Wht	559	c16	DC	40	WHT	266										
a17	DC	40	Wht	596	b17	DC	40	Wht	565															
2A1	8000/U	130	NATURAL	1980	2B1	8000/U	130	NATURAL	1962	2C1	8000/U	70	NATURAL	1015	2D1	8000/U	70	NATURAL	1092	2BR1	DC	40	WHT	1.130
2A2	8000/U	130	NATURAL	1925	2B2	8000/U	130	NATURAL	1907	2C2	8000/U	70	NATURAL	991	2D2	8000/U	70	NATURAL	1066	2BR2	DC	40	WHT	711
2A3	8000/U	130	NATURAL	1812	2B3	8000/U	130	NATURAL	1790	2C3	8000/U	70	NATURAL	945	2D3	8000/U	70	NATURAL	1016	2BR3	DC	40	WHT	1.070
2A4	8000/U	90	NATURAL	1740	2B4	8000/U	90	NATURAL	1722	2C4	8000/U	70	NATURAL	870	2D4	8000/U	70	NATURAL	932	2BR4	DC	40	WHT	923
2A5	8000/U	70	NATURAL	1551	2B5	8000/U	70	NATURAL	1516	2C5	8000/U	70	NATURAL	943						2BR5	DC	40	WHT	840
2A6	8000/U	70	NATURAL	1374	2B6	8000/U	70	NATURAL	1357	2C6	8000/U	70	NATURAL	921						2BR6	DC	40	WHT	1081
2A7	8000/U	70	NATURAL	2198	2B7	8000/U	70	NATURAL	2157	2C7	8000/U	70	NATURAL	1831						3BR1	DC	60	WHT	3307
3A3	8000/U	130	NATURAL	921	3B3	8000/U	90	Natural	875	CD1	8000/U	130	NATURAL	758						3BR2	DC	60	WHT	2744
					2ST1	DC	40	WHT	1176	CD2	8000/U	130	NATURAL	729						3BR3	DC	60	WHT	2545
					2ST2	DC	40	WHT	1216	CD3	8000/U	130	NATURAL	723										
					2ST3	DC	40	WHT	1557	CD4	8000/U	90	NATURAL	658										
					STAB	8000/U	90	NATURAL	4802	3C2	8000/U	130	NATURAL	1877										
										3C3	8000/U	90	NATURAL	851										
										4C3	8000/U	90	NATURAL	1533										
3A1	8000/U	230	NATURAL	5173	3B1	8000/U	190	NATURAL	5129	3C1	8000/U	190	NATURAL	5398						BRmain	Tarax	200	Red	3413
3A2	8000/U	190	NATURAL	5206	3B2	8000/U	130	NATURAL	5160	5C1	8000/U	190	NATURAL	3550										knot point: 3213
4A3	8000/U	130	NATURAL	4358	4B3	8000/U	90	NATURAL	4387															

# MESURES DE LIGNE

## ARTIK 6 - 21

LINES HEIGHT + RISER mm

	A	B	C	D	BR
1	7189	7138	7209	7279	7474
2	7153	7101	7169	7241	7214
3	7112	7059	7130	7200	7064
4	7121	7067	7145	7211	7056
5	7048	6993	7108	7175	6912
6	7011	6956	7053	7119	6776
7	6950	6899	6949	7015	6692
8	6960	6910	6948	6997	6712
9	6871	6829	6912		6643
10	6810	6770	6867		6538
11	6697	6668	6849		6556
12	6686	6660	6885		6534
13	6610	6592	6899		6560
14	6613	6598	6932		6654
15	6444	6424	6437		
16	6389	6381	6425		
17	6378	6386			

RISERS LENGHT mm

A	A'	B	C	
500	500	500	500	STANDARD
330	355	385	500	ACCELERATED

## ARTIK 6 - 23

LINES HEIGHT + RISER mm

	A	B	C	D	BR
1	7442	7381	7455	7527	7742
2	7405	7344	7414	7489	7473
3	7365	7301	7375	7447	7319
4	7374	7311	7390	7459	7311
5	7296	7227	7354	7423	7163
6	7258	7189	7297	7366	7022
7	7196	7131	7191	7258	6935
8	7206	7143	7190	7240	6956
9	7121	7068	7148		6881
10	7058	7008	7102		6773
11	6942	6902	7083		6792
12	6931	6894	7120		6771
13	6846	6823	7135		6798
14	6848	6829	7169		6895
15	6670	6648	6662		
16	6612	6603	6649		
17	6601	6608			

RISERS LENGHT mm

A	A'	B	C	
500	500	500	500	STANDARD
330	355	385	500	ACCELERATED

# MESURES DE LIGNE

## ARTIK 6 - 25

LINES HEIGHT + RISER mm

	A	B	C	D	BR
1	7680	7616	7693	7769	7993
2	7642	7579	7652	7729	7715
3	7601	7536	7612	7687	7555
4	7612	7546	7628	7700	7548
5	7532	7468	7592	7663	7394
6	7493	7430	7534	7604	7250
7	7430	7371	7424	7494	7162
8	7441	7383	7423	7475	7184
9	7352	7299	7381		7108
10	7287	7236	7333		6997
11	7168	7127	7314		7017
12	7156	7119	7352		6995
13	7067	7043	7365		7023
14	7070	7049	7401		7123
15	6887	6865	6879		
16	6828	6819	6866		
17	6816	6824			

RISERS LENGHT mm

A	A'	B	C	
500	500	500	500	STANDARD
330	355	385	500	ACCELERATED

## ARTIK 6 - 27

LINES HEIGHT + RISER mm

	A	B	C	D	BR
1	7983	7919	8000	8078	8336
2	7944	7881	7957	8037	8048
3	7902	7838	7917	7995	7884
4	7913	7850	7934	8009	7877
5	7831	7770	7901	7974	7717
6	7791	7730	7840	7913	7567
7	7726	7669	7727	7799	7476
8	7737	7682	7726	7780	7501
9	7646	7596	7688		7427
10	7578	7531	7637		7312
11	7455	7418	7617		7334
12	7443	7409	7656		7311
13	7357	7331	7668		7341
14	7360	7338	7704		7445
15	7168	7145	7159		
16	7106	7097	7145		
17	7094	7103			

RISERS LENGHT mm

A	A'	B	C	
500	500	500	500	STANDARD
330	355	385	500	ACCELERATED

# SUSPENTAGE

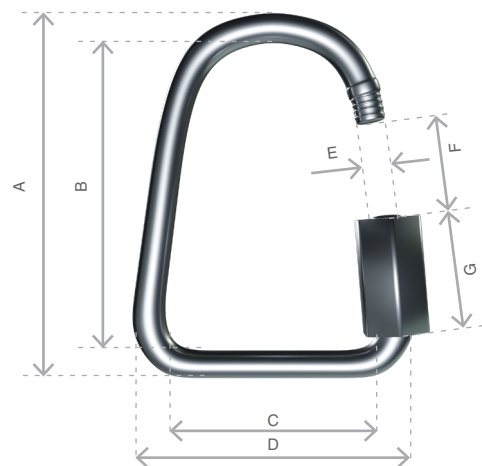
MATERIAL CODE		DC	DC	A-8000/U	8000/U	A-8000/U	A-8000/U	A-8000/U	TARAX
STRENGTH CODE		040	060	070	90	130	190	230	200
DIAMETER m/m	∅	0,5	0,6	0,7	0,8	0,9	1,1	1,1 x 1,4	1,7
CORE MATERIAL		DYNEEMA	DYNEEMA	ARAMID	ARAMID	ARAMID	ARAMID	ARAMID	DYNEEMA
SLEEVE MATERIAL		NO	NO	NO	NO	NO	NO	NO	Polyester
WEIGHT G/M	TOTAL	0,19	0,24	0,4	0,5	0,8	1,1	1,4	2
BREAKING STRENGTH daN	MINIMUM	40	60	70	90	130	190	230	200
	MAXIMUM	48	84	78	110	144	211	255	
STRENGTH AFTER									
5.000 BENDING	TEST EN	33	74	39	49	88	52	69	
CYCLES									
ELONGATION AT	5 daN en %			0,5	0,4	0,4	0,4	0,3	0,1-0,3
	10 daN en %		0,43	0,7	0,6	0,6	0,6	0,5	0,2-0,6
	15 daN en %			1	0,8	0,8	0,7	0,6	0,3-0,7
	20 daN en %			1,3	1	0,9	0,9	0,7	0,3-0,9
	25 daN en %			1,5	1,3	1	1	0,8	0,4-1
	30 daN en %		1,2	2,8	2,3	1,8	1,6	1,3	
	75 daN en %			3,7	3,2	3,1	2,7	2,3	0,8-1,7
	100 daN en %						2,6	3,6	1,2-2
	125 daN en %						3,5	3,3	
	150 daN en %						4,3	3,6	1,6-2,4
	175 daN en %								
	200 daN en %								2-2,8
ELONGATION MAX. BREAKING STRENGTH %			3,2	3,9	4,3	4	4,4	4,4	

# MAILLON

## DESCRIPTION

MAILLON	DELTA
REF.	3.5
MATERIEL	STAINLESS STEEL
DIAMETRE	3 m/m
POIDS	5 G/PIECE
QUANTITY	6 PIECES
INSERTS	2 GREEN / 6 BLACK

## DONNÉES TECHNIQUES



DIMENSIONS	m/m
A	37
B	29
C	14
D	22
E	4
F	5
G	12
CHARGE	KG
UTILE	110
RUPTURE	550

## MATERIEL

AISI 304 ACIER INOXYDABLE

STANDARD

UNE FERMETURE MANUELLE ET TOTALLEMENT VISSÉEPOUR

GARANTIR UNE SÉCURITÉ MAXIMALE (LA SPIRALE EN MÉTAL NE DOIT PLUS APPARAÎTRE)

CONTROLE SYSTEMATIQUE DES MAILLONS RAPIDES AVANT CHAQUE VOL

## DESCRIPTION

POULIE	20 m/m
CODE	RF25109
MATERIEL	STAINLESS STEEL
	NYLON
	CARBON ACETAL
COUSSINET	DELRIN®
POIDS	14 G/PIECE

## DONNÉES TECHNIQUES



DIMENSIONS	m/m
A	33
B	20
C	20
Ø	5 max
CHARGE	KG
UTILE	200
RUPTURE	400

## FIL

### CARACTERISTIQUES DU FIL DE COUTURE

NOM	SERAFIL
N° DE REFERENCE	60
MATERIEL	POLYESTER
FINITION	SILK
DENSITE LINEAIRE	NM 61 / 3 (DTEX 163 * 3)
CHARGE DE RUPTURE	3,000 CN
ALLONGEMENT	17,00%

### PROPIETIES SERAFIL

SOLIDITE A LA LUMIERE ARTIFICIELLE	ISO 105 B02 > 5 - 6
SOLIDITE A LA SUEUR	ISO 105 E04 > 4
SOLIDITE AU LAVAGE	ISO 105 C04 > 3
SOLIDITE AU FROTTEMENT A SEC	ISO 105 X12 > 4
SOLIDITE AU LAVAGE EN SECHERESSE	ISO 105 D01 > 3 - 4

DEPERLANT	WR
-----------	----

### CARACTERISTIQUES DES ÉLÉVATEURS

NOM	COATS BONDED C.F.P.
N° DE REFERENCE	V138
MATERIEL	POLYESTER
FINITION	SILK
CHARGE DE RUPTURE	9,5 KG
ALLONGEMENT	19%

## ÉLÉVATEURS

### ÉLÉVATEURS

REFERENCE	3455
MATERIEL	POLYESTER & TECHNORA
LARGEUR	12 MM
EPAISSEUR	2,25 MM
CHARGE DE RUPTURE	1.100 DAN
ALLONGEMENT	MAX. 11%
POIDS	21,1 G/M
COULEUR	BLACK

### INDICATEUR DE COULEUR

REFERENCE	IC-G 1-2
MATERIEL	POLYESTER
LARGEUR	70 M/M
EPAISSEUR	0,80 M/M
CHARGE DE RUPTURE	130 DN
ALLONGEMENT	35 %
POIDS	32 G * L.M.
COULEUR	GREEN

### POINT D'ATTACHE

REFERENCE	LKI - 10
MATERIEL	NYLON
LARGEUR	10 M/M
CHARGE DE RUPTURE	84 KG
ALLONGEMENT	30 %
POIDS	5,5 G/M
COULEUR	WHITE





## **Niviuk Paragliders**

C/ Del Ter 6 - D

17165 La Celler de Ter - Girona - Spain

+34 972 422 878 | [info@niviuk.com](mailto:info@niviuk.com)

[www.niviuk.com](http://www.niviuk.com)