

A person is paragliding over a large body of water, likely a lake. The paraglider is wearing a blue and black canopy with yellow accents. In the background, a town is built on a hillside overlooking the water. A bridge is visible on the right side of the image. The overall scene is a scenic view of a town and a lake from an aerial perspective.

# SKIN 3

*User's manual*



## SKIN 3

### THE NEXT PARAGLIDING EXPERIENCE

#### WELCOME

We wish to welcome you to our team and thank you for your confidence in our SKIN 3.

We would like to share the enthusiasm with which we created this wing and the importance and care we took in the design and manufacture of this new model in order to offer maximum pleasure on every flight with a Niviuk SKIN 3.

Forget everything you've seen and heard about single-surface gliders. The new SKIN 3 brings together the best of two worlds, and for the first time a single-surface glider offers the characteristics and flying comfort comparable to a conventional paraglider. Comfortable, stable, efficient and although it may not seem possible, single-surface.

We are confident you will enjoy flying this glider and will soon discover the meaning of our motto:

"The importance of small details".

The **NIVIUK Gliders** Team.

## USER'S MANUAL

### NIVIUK Gliders SKIN 3

This manual provides you with the necessary information on the main characteristics of your new SKIN 3.

Whilst it provides information on the wing, it cannot be viewed as an instructional handbook and does not offer the training required to fly this type of paraglider. Training can only be undertaken at a certified paragliding school and each country has its own system of licensing. Only the aeronautical authorities of respective countries can determine pilot competence.

The information in this manual is provided in order to warn you against adverse flying situations and potential dangers.

Equally, we would like to remind you that it is important to carefully read all the contents of your new SKIN 3 manual.

Misuse of this equipment could lead to severe injuries or death. The manufacturers and dealers cannot be held responsible for misuse of the paraglider. It is the responsibility of the pilot to ensure the equipment is used correctly.

---

NIVIUK GLIDERS & AIR GAMES SL C/ DEL TER 6, NAVE D 17165 LA CELLERA DE TER - GIRONA - SPAIN

TEL. +34 972 42 28 78 FAX +34 972 42 00 86

info@niviuk.com www.niviuk.com

---

## SUMMARY

WELCOME	2	4.3 ACCELERATED FLIGHT	13
USER'S MANUAL	2	4.4 FLYING WITHOUT BRAKE LINES	13
1. CHARACTERISTICS	4	4.5 KNOT(S) IN FLIGHT	13
1.1 WHO IS IT DESIGNED FOR?	4	5. LOSING ALTITUD	14
1.2 CERTIFICATION	4	5.1 BIG EARS	14
1.3 IN-FLIGHT BEHAVIOUR	4	5.2 B3 THECNIQUE	14
1.4 ASSEMBLY, MATERIALS	5	5.3 B-LINE STALL	14
1.5 ELEMENTS, COMPONENTS	6	5.4 SPIRAL DIVE	15
2. UNPACKING AND ASSEMBLY	6	5.5 SLOW DESCENT THECNIQUE	16
2.1 CHOOSE THE RIGHT LOCATION	6	6. SPECIAL METHODS	16
2.2 PROCEDURE	6	6.1 TOWING	16
2.3 CONNECTING THE HARNESS	7	6.2 ACROBATIC FLIGHT	16
2.4 TYPE OF HARNESS	7	7. FOLDING INSTRUCTIONS	16
2.5 SPEED BAR	7	7.1 MANTINANCE	16
2.6 TRIMMERS	9	7.2 STORAGE	17
2.7 INSPECTION AND WING		7.3 CHECK AND INSPECTION	17
INFLATION ON THE GROUND	9	7.4 REPAIRS	17
2.8 ADJUSTING THE BRAKES	9	8. SAFETY AND RESPONSABILITY	18
3. THE FIRST FLIGHT	9	9. GUARANTEE	18
3.1 CHOOSE THE RIGHT PLACE	9	10. ANNEXES	18
3.2 PREPARATION	9	10.1 TECHNICAL DATA	20
3.3 FLIGHT PLAN	9	10.2 MATERIALS DESCRIPTION	21
3.4 PRE-FLIGHT CHECK LIST	10	10.3 RISERS PLAN	22
3.5 WING INFLATION, CONTROL, AND TAKE-OFF	10	10.4 SUSPENSION PLAN	23
3.6 LANDING	10	10.5 DIMENSIONS SKIN 3	16 24
3.7 PACKING	10	10.6 DIMENSIONS SKIN 3	18 24
4. IN FLIGHT	11	10.7 DIMENSIONS SKIN 3	20 25
4.1 FLYING IN TURBULENCE	11	10.10 CERTIFICATION SPECIMEN TEST	26
4.2 POSSIBLE CONFIGURATIONS	11		



## 1. CHARACTERISTICS

### 1.1 WHO IS IT DESIGNED FOR?

Single-surface gliders are no longer just the preserve of extreme mountaineers. The new SKIN 3 is an outstanding wing for any pilot looking for the perfect balance between accessibility/performance and lightness/durability.

### 1.2 CERTIFICATION

The SKIN 3 has been submitted for the European EN and LTF certification.

All certification tests were performed at the Swiss testing house Air Turquoise. All sizes passed the load and shock tests.

The load test proved that the wing can withstand the stipulated 8G.

The shock test proved that the wing can resist 800 daN of force.

The flight test resulted in the following certification for the sizes 18 and 20 of the SKIN 3:

EN B  
LTF B

We recommend that only pilots who are familiar with gliders of this certification or above fly the SKIN 3.

Only the aeronautical authorities of respective countries can determine pilot competence.

We recommend pilots read the flight test report carefully, especially the comments of the test pilot. The report contains all the necessary information on how the SKIN 3 reacts during each of the tested manoeuvres.

It is important to note that different size wings will react differently during manoeuvres. Even within the same size, at maximum or minimum load, the behavior and reactions of the wing may vary.

- Description of EN B class wing characteristics:  
SKIN 3 with a high degree of passive safety and very forgiving flight characteristics. Gliders with high collapse resistance outside normal flight.
- Description of the skills required by the pilot to fly an EN B wing:  
Designed for all pilots, including pilots under instruction.

For further information on the flight test and the corresponding certification number, please see the final pages of this manual or see [niviuk.com](http://niviuk.com).

### 1.3 IN-FLIGHT BEHAVIOR

Niviuk developed this wing by adopting very specific goals: to improve performance, excellent handling; to facilitate more control for the pilot.

To increase performance while maintaining the highest level of safety. To ensure that the wing transmits the maximum feedback in an understandable and comfortable way so that the pilot can focus on piloting and enjoying the flight. And, with smooth handling, take advantage of all favourable conditions.

In all aspects of flight, the wing is very solid and stable. The glide is smooth, even when fully accelerated. During glides, the wing maintains altitude and the wing remains stable. Improved turn precision means handling is less physical and provides better feedback. Inflating the wing is much easier and gentler, without overshooting.

Flying this wing is very intuitive, with clear and useful feedback about the airmass. It responds to the pilot's inputs effectively and even in thermic and turbulent conditions it remains stable and solid.

The SKIN 3 flies efficiently. It enters thermals with sufficient speed to centre in the lift and climbs progressively. The handling is progressive and effective for even more flying pleasure under an exciting wing of extraordinary quality.

It is lightweight; even lighter in flight and easy to pilot, with outstanding turbulence buffering and a surprising range of speed for incredible glides.

#### 1.4 ASSEMBLY, MATERIALS

The SKIN 3 has all the technological innovations used on other Niviuk gliders and is built with the most careful selection of current materials. It has all the current technology and accessories available to improve pilot comfort whilst increasing safety and performance. In the design of all Niviuk products the team aims to ensure development and continuous improvement. The technologies developed in recent years have allowed us to develop greater, better wings. It is in this context that we would like to introduce the technologies included in this new model.

**RAM Air Intake** - this system is characterised by the arrangement of the air inlets, to ensure optimal maintenance of internal pressure. Thanks to this design, we were able to reduce their size, while maintaining the same air flow at all angles to improve laminar flow. More consistency across the whole speed range and better performance without compromising on safety.

**Titanium Technology (TNT)** - a revolutionary technique using titanium. Using Nitinol in the internal construction provides a more uniform profile and reduces the weight to gain efficiency in flight. Nitinol provides the highest level of protection against deformation, heat or breaks. The leading edge is more rigid and the wing surface remains perfectly taut, without creases or parasitic drag. This optimises glide in all phases of the flight. Because the flexible rods always return to their original shape, the integrity of the profile is never affected. Nitinol provides the highest level of protection against deformation, heat or breaks.

**Structured Leading Edge (SLE)** - the use of the SLE considerably reduces the amount of Mylar which was used in previous Niviuk wings and this also reduces the weight of the leading edge. Therefore it is easier to inflate this wing than a paraglider without this system.

**3D Pattern Cut Optimisation (3DP)** – the latest generation of wings require a new fabric panel pattern and cutting system. Creating separate panels for each of the sections at the front of the wing means the sail fabric is more taut and crease-free. During the cutting, the optimal orientation of the fabric section is selected, depending on its final location. If the fabric pattern is properly aligned with the axes of load, it suffers less deformation after repeated use, to the long-term benefit of the leading edge.

**3D Leading Edge (3DL)** - adding an extra seam to the longitudinal axis of the glider helps, on the one hand, give more consistency and volume to the profile (a more efficient 3D contour) and on the other, joins and shapes the leading edge panels. The fabric is guided by the panel position to ensure fewer creases and better load distribution. The result is a cleaner profile, which benefits the wing in terms of performance and durability.

**Structured Trailing Edge (STE)** - optimises the profile without deforming it. The circulation of the air is more fluid, ensuring a cleaner airflow. When changing the angle of attack or when accelerated, the profile remains more uniform and the after braking, the wing returns to trim more progressively, faster and more actively.

The use of these technologies is a big technological leap forward in building wings and a big improvement in flight comfort.

For the construction process of the SKIN 3 we use the same criteria, quality controls and manufacturing processes as in the rest of our range. From Olivier Nef's computer to fabric cutting, the operation does not allow for even a millimetre of error. The cutting of each wing component

is performed by a rigorous, extremely meticulous, automated computer laser-cutting robotic arm.

This program also paints the guideline markers and numbers on each individual fabric piece, thus avoiding errors during this delicate process. The jigsaw puzzle assembly is made easier using this method and optimises the operation while making the quality control more efficient. All SKIN 3 gliders go through an extremely thorough and detailed final inspection. The canopy is cut and assembled under strict quality control conditions facilitated by the automation of this process. Every wing is individually checked with a final visual inspection. The fabric used to manufacture the glider is light, resistant and durable. The fabric will not experience fading and is covered by our warranty.

The line set of the SKIN 3 combines unsheathed Dyneema for all gallery lines and sheathed Kevlar for the main lines.

The line diameter has been calculated depending on the workload and aims to achieve the required best performance with the least drag. The sheath protects the line cores from UV rays and abrasions.

The lines are semi-automatically cut to length and all the sewing is completed under the supervision of our specialists. Every line is checked and measured once the final assembly is concluded.

Each SKIN 3 is packed following specific maintenance instructions as recommended by the fabric manufacturer.

Niviuk SKIN 3 gliders are made of premium materials that meet the requirements of performance, durability and certification that the current market demands.

Information about the various materials used to manufacture the wing can be viewed in the final pages of this manual.

## 1.5 ELEMENTS, COMPONENTS

The SKIN 3 is delivered with a series of accessories that will greatly assist you in the maintenance of your paraglider:

- An inner bag to protect the wing during storage and transport.
- An adjustable compression strap to compress the inner bag and reduce its volume.
- A riser bag to protect from damage during transport and to avoid tangles in the lines.
- A repair kit with self-adhesive Ripstop tape and spare O-rings to protect the maillons.
- A Kargo bag. It is not included in the pack, but we recommend to get it. This bag is large enough to hold all equipment comfortably and with plenty of space.

## 2. UNPACKING AND ASSEMBLY

### 2.1 CHOOSING THE RIGHT LOCATION.

We recommend unpacking and assembling the wing on a training hill or a flat clear area without too much wind and free of obstacles. It will help you to carry out all the recommended steps required to check and inflate the SKIN 3 .

We recommend the whole installation procedure is supervised by a qualified professional instructor or official dealer. Only they can address any doubts in a safe and professional way.

### 2.2 PROCEDURE

Take the paraglider out of the rucksack, open and unfold it on the ground with the lines positioned on the undersurface, oriented in the direction of inflation. Check the condition of the fabric and the lines for defects. Check the maillons/IKS connecting the lines to the risers to make sure they are fully closed and tightened. Identify, and if necessary untangle,

the A, B, C and D-lines, the brake lines and corresponding risers. Make sure that there are no knots.

### 2.3 CONNECTING THE HARNESS

The SKIN 3 risers are colour-coded.

- Right: green
- Left: red

This colour-coding makes it easier to connect the wing to the correct side and helps prevent pre-flight errors.

Correctly connect the risers to the attachment points so that the risers and lines are correctly ordered and free of twists. Check that the IKS and carabiners are properly fastened and securely locked.

### 2.4 TYPE OF HARNESS

The SKIN 3 can be flown with all current harness types. We recommend setting the chest strap to the distance specified in the certification report - this will vary depending on size.

Care should be taken with the chest strap setting, as the distance of the chest strap setting will affect the handling of the glider. If the chest strap is too wide, it allows greater feedback but this carries the risk of affecting the stability of the wing.

If the chest strap is set too tightly, the wing feels more solid, but there is a loss of feedback and a risk of twisting in the case of a violent asymmetric collapse.

### 2.5 SPEED-BAR

The speed-bar is a means of temporary acceleration by changing the flow over the profile. The speed system comes pre-installed on the risers and is not modifiable as it conforms to the measurements and limits stipulated in its certification.

The SKIN 3 includes a speed System with a maximum travel of 45 m/m. The speed system is engaged when the pilot pushes the speed-bar - not included as standard with this glider model - with their feet (see 2.5.1 Speed system assembly)

The speed system uses an action/reaction system. Released, the speed-bar is set to neutral. When the bar is pushed using the feet, the wing accelerates. The speed can be regulated by varying the pressure on the bar. Once the pressure on the bar is released, the speed system returns to the neutral setting.

The speed system is efficient, sensitive and precise. The pilot can use the system whenever they want during the flight. In the neutral position the glider will fly at the standard speed and glide. Using full speed-bar, the wing will fly at maximum speed, but the glide will be adversely affected.

#### PLEASE NOTE!

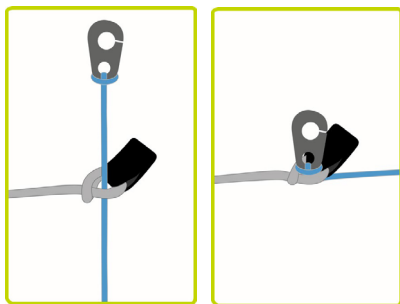
The use of the speed system results in changes to the speed and reactions of the wing. For more information, please see the certification report.

#### 2.5.1 SPEED SYSTEM ASSEMBLY.

The speed-bar consists of the bar that the pilot pushes with their feet, as well as the two cords that connect it to the speed system components on the risers. Once you have chosen the type of speed-bar you prefer, you must install it. Some considerations:

- you should use the type of speed-bar you consider appropriate, depending on the type of harness, personal preferences, etc.
- The speed-bar is detachable to facilitate its connection and / or disconnection to the risers as well as subsequent adjustment.
- To connect it to the harness, please follow the instructions of the harness manufacturer. The majority of harnesses have a speed system pre-installed.
- The standard connection of the speed-bar to the speed system is via

Brummel hooks, where two slots in the hooks are interlocked, making their connection / disconnection easy. However, any connection system that is safe may be used.



### 2.5.2 CHANGING THE RISER CORDS.

In spite of the speed system having pulleys with bearings to reduce friction to a minimum, the frequency with which the speed-bar is used causes the cord to wear and you may need to replace them.

In all Niviuk gliders the speed system cords on the risers are completely removable and easily replaceable. You can use the Brummel hooks, not use them, remove them, use another type of connector, etc. It is even possible to fix the speed-bar cords directly to the speed system on the risers. This last option makes the connection / disconnection more laborious, but means the cord has maximum travel without obstructions or restrictions which is very useful for some models of harnesses.

### 2.6 TRIMMERS

The trimmers serve to modify the speed of the wing.  
The trimmer system is set by the pilot, i.e. it does not return to its point of

origin, but remains in place until the pilot decides to release/change the position.

When the trimmer is in the neutral position, the wing will fly at a lower speed with greater glide; when the trimmer is released, the wing will fly with higher speed and worse glide.

Although the principles of trimmer operation are widely understood, it is necessary to underline some basic safety rules.

- The trimmers are installed in the factory and the pilot only needs to check their proper operation and adjustment.
- The pilot should note that when releasing trimmers, the brake handle rises the same distance as the trimmers travel.
- The trimmers must be applied symmetrically.
- It is the responsibility of the pilot to decide how much trimmers to use at any one time.

Bear in mind that the trimmer is not the only speed variation system. Care should be taken when the following elements interact with each other:

Trimmers / Brake.

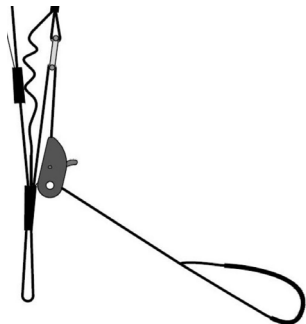
With the SKIN 3 it is possible to use the trimmers and brake both separately and simultaneously.

The pilot must note and assess the increase in wind speed and turbulence, and decide the most safe action to take.

Using the trimmers:

Engaging and releasing the trimmers is effective and quick as well as sensitive and accurate





The trimmers must be manually operated by the pilot. The trimmers are situated on the rear risers, one on each side. To open the trimmers, press the trim tab inwards until the tape is released and pull the trim tab to the required position. If we stop pressing the trim tab, the tape is locked again in that position. Once it is locked in that position, it will not release automatically and return to its initial position. The pilot is solely responsible for opening and closing the trimmers. To close the trimmers, pull the tape down using the handle and without touching the trimmer tabs, then release when you reach the required position.

## 2.7 INSPECTION AND WING INFLATION ON THE GROUND

After your gear has been thoroughly checked and the weather conditions deemed favourable for flying, inflate your SKIN 3 as many times as necessary to familiarise yourself with its behaviour. Inflating the SKIN 3 is easy and should not require a great deal of physical effort. Inflate the wing with a little pressure from the body using the harness. This may be assisted by using the A-lines. Do not pull on them; just accompany the natural rising movement of the wing. Once the wing is inflated to the overhead position, appropriate control with the brakes will be sufficient to hold it there.

## 2.8 ADJUSTING THE BRAKES

The length of the main brake lines are adjusted at the factory and conform to the length stipulated during certification. However, they can be changed to suit your flying style. It is advisable to fly with the original setting for a period of time to get used to the actual behaviour of the SKIN 3. In case it is necessary to modify the brake length, loosen the knot, slide the line through the brake handle to the desired point and re-tighten the knot firmly. Only qualified personnel should carry out this adjustment. You must ensure that the modification does not affect the trailing edge and slow the glider down without pilot input. Both brake lines should be symmetrical and the same length. We recommend using a clove hitch or bowline knot.

When changing the brake length, it is necessary to check that they do not engage when the speed-bar is used. When we accelerate, the glider rotates over the C-riser and the trailing edge elevates. It is important to check that the brake is adjusted to take into consideration this extra distance during acceleration. With this profile deformation there is a risk of generating turbulence and causing a frontal or asymmetric collapse.

## 3. THE FIRST FLIGHT

### 3.1 CHOOSE THE RIGHT PLACE

For the first flight we recommend going to your usual flying area and that a qualified instructor is present and supervising the entire procedure.

### 3.2 PREPARATION

Repeat the procedures detailed in chapter 2 UNPACKING AND ASSEMBLY in order to prepare your equipment.

### 3.3 FLIGHT PLAN

Planning a flight before taking off to avoid possible problems later is always a good idea.

### 3.4 PRE-FLIGHT CHECK LIST

Once ready, but before taking off, conduct another equipment inspection. Conduct a thorough visual check of your gear with the wing fully open, the lines untangled and properly laid out on the ground to ensure that all is in working order. Be certain the weather conditions are suited to your flying skill level.

### 3.5 WING INFLATION, CONTROL, AND TAKE-OFF

The SKIN 3 comes up easily, without requiring additional energy, and does not overfly you. It is a straight-forward exercise, leaving enough time for you to decide whether to accelerate and take off or not.

If the wind permits, we recommend a reverse launch, as this allows a better visual inspection of the wing during inflation. In “strong” winds, the SKIN 3 is especially easy to control using this launch technique. Winds of 25 to 30 km/h are considered strong for paragliding.

Correctly setting up the wing on the ground before takeoff is especially important. Choose an appropriate location facing the wind. Position the paraglider in a crescent configuration to facilitate inflation. A clean wing layout will ensure a trouble-free take off.

### 3.6 LANDING

Landing the SKIN 3 is like landing any other paraglider. Correctly executing the different landing phases will make the touchdown more accurate and safe, even in nil-wind.

- On final glide it is recommended to speed up the wing. We recommend opening the trimmers by 1/3 and to release the brake pressure by raising the hands.

- Close to the ground, determined braking ensures an effective roundout and sufficient the horizontal speed.

- Only a few steps might be needed.

We do not recommend taking a wrap to increase the efficiency of the brakes.

### 3.7 PACKING

The SKIN 3 has a complex leading edge, manufactured using a variety of different materials and it must be packed carefully. A correct folding method is very important to extend the useful life of your paraglider.

It should be concertina-packed, with the leading edge reinforcements flat and the flexible rods stacked one on top of the other. This method will keep the profile in its original shape and protect the integrity of the wing over time. Make sure the reinforcements are not bent or folded. It should not be folded too tightly to avoid damage to the cloth and/or lines.

At Niviuk we have designed the NKare Bag, a bag designed to assist you with rapid packing which helps maintain the integrity of the leading edge and its internal structures in perfect condition.

The NKare Bag guides you through the folding process, allowing you to concertina pack the wing with each rod on top of the other and then fold the wing as required. This folding system ensures that both the fabric and the reinforcements of the internal structure are kept in perfect condition.

## 4. IN FLIGHT

We recommend that you read the certification test report.

The report contains all the necessary information on the SKIN 3 reacts during each of the tested manoeuvres.

It is important to point out that the appropriate response to each adverse manoeuvre can vary from size to size; even within the same size at maximum or minimum load the behaviour and reactions of the wing may vary.

Having the knowledge that the testing house provides through the test report is fundamental to learning how to deal with possible situations.

To become familiar with the manoeuvres described below, we recommend practising within the auspices of a licensed training outfit.

### 4.1 FLYING IN TURBULENCE

The SKIN 3 has an excellent profile to deal with incidents; it is very stable in all conditions and has a high degree of passive safety, even in turbulent conditions.

All paragliders must be piloted for the prevailing conditions and the pilot is the ultimate safety factor.

We recommend active flying in turbulent conditions, always taking measures to maintain control of the wing, preventing it from collapsing and restoring the speed required by the wing after each correction.

Do not correct the glider (braking) for too long in case this provokes a stall. If you have to take corrective action, make the input then re-establish the correct flying speed.

### 4.2 POSSIBLE CONFIGURATIONS

To become familiar with the manoeuvres described below, we recommend practising within the environment of a licensed training outfit. You must adapt your use of the brakes depending on the wing-loading and avoid over-steering.

It is important to note that the type of reaction to a manoeuvre can vary from one size of wing to another, and even within the same size the behaviour and reactions may be different depending on the wing-loading.

In the test report, you will find all the necessary information on how to handle your new wing during each of the tested manoeuvres. Having this information is crucial to know how to react during these manoeuvres in real flight, so you can deal with these situations as safely as possible.

#### Asymmetric collapse

In spite of the SKIN 3 's profile stability, strong turbulent air may cause the wing to collapse asymmetrically in very strong turbulence, especially if you do not fly actively and prevent the collapse. In this case the glider conveys a loss of pressure through the brake lines and the harness.

To prevent the collapse from happening, pull the brake handle on the affected side of the wing. It will increase the incidence of the wing (angle of attack). If the collapse does happen, the SKIN 3 will not react violently, the turning tendency is gradual and easily controlled. Weight-shift toward the open, flying side (the opposite side of the collapse) to keep the wing flying straight, while applying light brake pressure to that side if necessary. Normally, the collapsed side of the wing should then recover and reopen by itself. If it does not, try to weight-shift towards the collapsed side. If this does not resolve the issue, pull the brake handle on the collapsed side decisively and quickly all the way (100%) down and release it back up immediately. You may have to repeat this action to provoke the re-opening of the collapsed glider side. Do not over-brake or slow down the flying side of the wing (control the turn). Once the collapsed side is open make sure you return to normal flying speed.

### Frontal collapse

Due to the SKIN 3 's design, in normal flying conditions frontal collapses are unlikely to take place. The wing's profile has great buffering abilities when dealing with extreme incidence changes. A frontal collapse may occur in strong turbulent conditions, entering or exiting powerful thermals. Frontal collapses usually re-inflate without the glider turning, but a symmetrically applied quick braking action with a quick deep pump of both brakes will accelerate the re-inflation if necessary. Release the brake lines immediately to return to default glider air speed.

### Negative spin

A negative spin does not conform to the SKIN 3 's normal flight behaviour. Certain circumstances however, may provoke a negative spin (such as trying to turn when flying at very low air speed whilst applying a lot of brake). It is not easy to give any specific recommendation about this situation other than quickly restoring the wing's default air speed and angle of attack by progressively reducing the tension on the brake lines. The normal wing reaction will be to have a lateral surge on the re-accelerated side with a rotation not greater than 360° before returning to default air speed and a straight flight path trajectory.

### Parachutal stall

The possibility of entering or remaining in a parachutal stall have been eliminated from the SKIN 3 .

A parachutal stall is virtually impossible with this wing. If it did enter into a parachutal stall, the wing loses forward motion, becomes unstable and there is a lack of pressure on the brake lines, although the canopy appears to be fully inflated. To regain normal air speed, release brake line tension symmetrically and manually push on the A-lines or weight-shift your body to any side WITHOUT PULLING ON THE BRAKE LINES.

### Deep Stall

The possibility of the SKIN 3 stalling during normal flight is very unlikely. It could only happen if you are flying at a very low air speed, whilst over-steering or performing dangerous manoeuvres in turbulent air.

To provoke a deep stall, the wing has to be slowed down to its minimum air speed by symmetrically pulling the brake lines all the way (100%) down until the stall point is reached and held there. The glider will first pitch rearward and then reposition itself overhead, rocking slightly, depending on how the manoeuvre is done.

When entering a stall, remain clear-headed and ease off the brake lines until reaching the half-way point of the total brake travel. The wing will then surge violently forward and could reach a point below you. It is most important to maintain brake pressure until the glider has returned to its default overhead flying position.

To resume normal flight conditions, progressively and symmetrically release the brake line tension to regain air speed. When the wing reaches the overhead position, the brakes must be fully released. The wing will then surge forward to regain full air speed. Do not brake excessively at this moment as the wing needs to accelerate to pull away from the stall configuration. If you have to control a possible frontal collapse, briefly pull both brake handles down to bring the wing back up and release them immediately while the glider is still in transition to reposition itself overhead.

### Cravat

A cravat may happen after an asymmetric collapse, when the end of the wing is trapped between the lines. Depending on the nature of the tangle, this situation could rapidly cause the wing to spin. The corrective manoeuvres to use are the same as those applied in case of an asymmetric collapse: control the turn/spin by applying tension on the opposite brake and weight shift opposite to the turn. Then locate the 3STI stablo line (attached to the wing tip) trapped between the other lines. This line has a different colour and is located on the outside position of the B-riser.

Pull this line until it is taut. This action will help to release the cravat. If ineffective, fly down to the nearest possible landing spot, controlling the direction with both weight-shift and the use of the brake opposite to the tangled side. Be cautious when attempting to undo a tangle while flying near terrain or other paragliders; it may not be possible to continue on the intended flight path.

#### Over-controlling

Most flying problems are caused by wrong pilot input, which then escalates into a cascade of unwanted and unpredicted incidents. We should note that the wrong inputs can lead to loss of control of the glider. The SKIN 3 was designed to recover by itself in most cases. Do not try to over-correct it!

Generally speaking, the reactions of the wing, which are caused by too much input, are due to the length of time the pilot continues to over-control the wing. You have to allow the glider to re-establish normal flying speed and attitude after any type of incident.

#### 4.3 ACCELERATED FLIGHT

The SKIN 3's profile was designed for stable flight throughout its entire speed range. The speed-bar can be used in strong winds or significant sink.

When accelerating the wing, the profile becomes more sensitive to turbulence and closer to a possible frontal collapse. If a loss in internal wing pressure is felt, tension on the speed-bar should be reduced to a minimum and a slight pull on the brake lines is recommended to increase the wing's incidence angle. Remember to re-establish the air speed after correcting the angle of attack.

It is NOT recommended to accelerate near obstacles or in very turbulent conditions. If necessary, constantly adjust the movements and pressure on the speed-bar whilst doing the same to the brake lines. This balance is considered to be 'active piloting'.

#### 4.4 FLYING WITHOUT BRAKE LINES

If, for any reason at all, the SKIN 3's brake lines become disabled in flight, it will become necessary to pilot the wing with the D-risers and weight shifting until landing. These risers steer easily because are not under significant tension. You will have to be careful and not handle them too heavily in case this causes a stall or negative spin. The wing must be flown at full speed (not accelerated) during the landing approach, and the D-risers will have to be pulled symmetrically all the way down shortly before contact with the ground. This braking method is not as effective as using the brake lines, and hence the wing will land with a higher ground speed.

#### 4.5 LINE KNOT(S) IN FLIGHT

The best way to avoid knots and tangles is to thoroughly inspect the lines as part of a systematic pre-flight check. If a knot is spotted during the take off phase, immediately abort the launch sequence and stop.

If inadvertently taking off with a knotted line, the glider drift will need to be compensated by weight-shifting to the opposite side and applying a slight brake pull to that side. Gently pull the brake line to see if the knot can be undone or try to locate the problem line. Try pulling it to see if the knot can be undone. Beware of trying to clear a knotted line or untangle a line in flight when close to the terrain. If the knot is too tight and cannot be undone, carefully and safely fly to the nearest landing zone. Be careful: do not pull too hard on the brake handles because there will be an increased risk of stalling the wing or entering a negative spin. Before attempting to clear a knot, make sure there are no other pilots flying in the vicinity.

## 5. LOSING ALTITUDE

Knowledge of different descent techniques could become vital in certain situations. The most suitable descent method will depend on the particular situation.

To become familiar with the manoeuvres described below, we recommend practising within the environment of a licensed training outfit.

### 5.1 BIG EARS

The “Big ears” is a moderate descent technique, able to increase the sink rate to  $-3$  or  $-4$  m/s and reduces the ground speed by 3 to 5 km/h. The angle of attack and effective wing-loading will also increase due to the smaller surface area of the wing.

#### Standard technique

To perform the ‘Big ears’ manoeuvre, take the outermost line on each A-riser (the 3A2 line on the SKIN 3 ) and simultaneously, smoothly pull them outward and downward. The wingtips will fold in. To re-establish forward speed and the correct angle of attack, accelerate once the ears are pulled.

Keep the ears pulled in until you have lost the desired altitude. Let go of the lines to re-inflate the tips automatically. If they do not, try progressively pulling one brake then the other. Asymmetric reopening is recommended in order to avoid compromising the angle of attack, particularly flying near the ground or in turbulent conditions.

#### **Beware of the risk of stalling!**

The action of reaching for the outermost A-lines “3A2” to make ears, can inadvertently mean pulling the brakes. The same can happen when we are holding the tips down with the outermost A-lines “3A2”, it is possible to accidentally affect the brakes. This can obviously lead to a significant

speed decrease. In SKIN 3s with a very pronounced arc, pulling big ears means an increase in drag. On a very arched wing, the ears do not fold, they just hang. The increase of drag is more pronounced than on wings with a less pronounced arc.

The SKIN 3 is designed with little chord, which is good in normal flight conditions. However, this same damping is what can cause us to have problems to regain normal flying speed after a high increase of the angle of attack and the added drag of the ears.

These particularities, together with turbulent thermic conditions, could cause an unintentional stall.

The solution: big ears may still be applied but you must be fully aware of the above-mentioned points and act accordingly. To avoid the stall, simply use half speed-bar (this is sufficient) to increase the speed and decrease the angle of incidence. This should allow you to maintain sufficient speed to prevent the stall. Take care not to pull the brakes while making the ears as this will make a stall more likely!

### 5.2 B3 TECHNIQUE

On the new SKIN 3's generation the application of big ears can create a high degree of trailing edge turbulence. In addition, with the length of the chord and the arc of the wing, the ears have a tendency to “flap”, increasing the turbulence and causing the SKIN 3 to lose too much airspeed, making it necessary for the pilot to recover it, either using the speed-bar or releasing the ears.

This new rapid descent technique was first discovered by our Niviuk team pilots in 2009 while flying a competition prototype wing, which, because of its line plan and high aspect ratio would not allow big ears to be applied. In fact, big ears on 2-liner wings can often prove difficult.

With the current 2 or 3-liner wings, the inability to pull big ears, or the risk involved in doing so, concerns many pilots who want to have a controlled rapid descent technique. For the above reasons we recommend using the “3B2” line.

This technique easily increases the descent rate without causing problems and without the risk of causing a collapse while maintaining high speed.

How? Locate the “3B2” line on your risers and, as you would when applying big ears, simply pull down firmly and smoothly until you see both wingtips drop back slightly. The forward speed of the glider will then reduce slightly, quickly stabilise and then increase. You will then experience a descent rate of around 5-6m/s.

We recommend the application of the speed bar whilst using this technique. Controlled turning of the wing can easily be maintained by weight shifting, exactly the same as you would with big ears. During this manoeuvre, the first sensation is a decrease in relative wind and a slight backwards inclination of the wing, as if going backwards.

To exit the manoeuvre release the lines as you would with big ears, control the pitch and the wing will quickly adopt normal flight. This new technique allows a comfortable and controllable rapid descent without the risk of experiencing a cravat. It is very comfortable and makes turning simple. We advise you to first try this technique in smooth conditions with sufficient altitude above appropriate terrain.

This is a new controlled descent technique that only needs a little practise to be executed with total comfort and effectiveness.

### 5.3 B-LINE STALL

When carrying out this manoeuvre, the wing stops flying, loses all horizontal speed and the pilot is no longer in control of the SKIN 3.

The airflow over the profile is interrupted and the wing enters a situation similar to parachuting.

To enter this manoeuvre, the B-risers are gripped below the maillons and symmetrically pulled down together (approx. 20-30 cm) and maintained in that position.

Initiating the maneuver is physically demanding because it can take

some strength to pull the risers down until the wing is deformed. After this, the physical effort is less. Continue to hold the risers in position. Once the wing is deformed, its horizontal speed will drop to 0 km/h; vertical descending speed increases to -6 to -8 m/s, depending on the conditions and how the manoeuvre is performed.

To exit the manoeuvre, simultaneously release both risers. The wing will then slightly surge forward and automatically return to normal flight. It is better to let go of the lines quickly rather than slowly.

This is an easy descent technique to perform, but remember that the wing will stop flying, will lose all forward horizontal speed, and its reactions will change markedly when compared to a normal flight configuration.

### 5.4 SPIRAL DIVE

This is a more effective way to rapidly lose altitude. Beware that the wing will experience and be subjected to a tremendous amount of descending and rotating speed (g-force), which can cause a loss of orientation and consciousness (blackout). This manoeuvre must therefore be done gradually to increase one's capacity to resist the g-force exerted on the body. With practise, you will fully appreciate and understand it. Only practise this manoeuvre at high altitude and with enough ground clearance.

To start the manoeuvre, first weight shift and pull the brake handle located on the inner side of the turn. The intensity of the turn can be controlled by braking slightly using the outer brake handle.

The SKIN 3 flying at its maximum rotating speed can reach -20 m/s, or the equivalent of a 70 km/h vertical descent, and will stabilise in a spiral dive from 15m/s onwards.

Good enough reasons to familiarise yourself with the manoeuvre and understand how to exit it.

To exit this manoeuvre, the inner brake handle (down side of the turn) must progressively be relaxed while momentarily applying tension to the outer brake handle opposite to the turn. The pilot must also weight shift and lean towards the opposite side of the turn at the same time.

The exit should be performed gradually and smoothly so that the changes in pressure and speed can be noted.

When exiting the spiral, the glider will briefly experience an asymmetrical acceleration and dive, depending on how the manoeuvre was carried out.

Practise these manoeuvres at sufficient altitude and carefully.

## 5.5 SLOW DESCENT TECHNIQUE

This technique allows descent without straining the wing or taxing the pilot. Glide normally while searching for descending air and begin to turn as if climbing in a thermal, but with the intention to sink.

Common sense has to be used to avoid dangerous areas of rotor when looking for descending air. Safety first!

## 6. SPECIAL METHODS

### 6.1 TOWING

The SKIN 3 does not experience any problem whilst being towed. Only qualified winch personnel should handle the certified equipment to carry out this operation. The wing must be inflated similarly as during a normal take off.

It is important to use the brakes to correct the flight path alignment, especially if the glider begins to turn. Since the wing is subject to a slow

airspeed and with a high positive angle of attack, we must make any corrections with a high degree of feel and delicacy, in order to avoid a stall.

## 6.2 ACROBATIC FLIGHT

Although the SKIN 3 was tested by expert acrobatic pilots in extreme situations, it was not designed for it. We do not recommend using this glider for acrobatic flying!!!

We consider acrobatic flights to be any form of piloting different than standard flights. Learning acrobatic manoeuvres should be conducted under the supervision of qualified instructors within a school environment and over water with all safety/rescue elements in place. Centrifugal forces as high as 4 to 5 g can be exerted on the body and wing during extreme manoeuvres.

## 7. FOLDING INSTRUCTIONS

### 7.1 MAINTENANCE

Niviuk we are firmly committed to make technology accessible to all pilots. Therefore our wings are equipped with the latest technological advances gained from the experience of our R&D team.

Careful maintenance of your equipment will ensure continued top performance. Apart from the general checks, we recommend actively maintaining your equipment.

A pre-flight check is obligatory before each flight. If there is any damage to the equipment or you suspect any areas of the wing are susceptible to wear, you should inspect these and act accordingly.

All incidents involving the leading edge should be reviewed. A hard



impact of the leading edge against a hard surface can damage the sail cloth.

Unsheathed lines provide increased performance, but this means more care should be taken when using and maintaining the wing.

Thanks to TNT, the wing has more safety and performance, but this means being more careful with the material. If any Nitinol rod is damaged, they are easily replaceable.

The fabric and the lines do not need to be washed. If they become dirty, clean them with a soft damp cloth, using only water. Do not use detergents or other chemicals.

If your wing is wet from contact with water, place it in a dry area, air it and keep it away from direct sunlight.

Direct sunlight may damage the wing's materials and cause premature aging. After landing, do not leave the wing exposed to the sun. Pack it properly and stow it away in its backpack.

If your wing is wet from contact with salt water, immerse it in fresh water and dry it away from direct sunlight.

## 7.2 STORAGE

It is important for the wing to be correctly folded when stored. Keep it in the in a cool, dry place away from solvents, fuels, oils.

Do not leave your gear inside a car boot, as cars left in the sun can become very hot. A rucksack can reach temperatures up to 60°C.

Weight should not be laid on top of the equipment.

It is very important to pack the wing correctly before storage.

In case of long-term storage it is advisable, if possible, that the wing is not compressed and it should be stored loosely without direct contact with the ground. Humidity and heating can have an adverse effect on the equipment.

## 7.3 CHECKS AND INSPECTIONS

The SKIN 3 must be periodically serviced. An inspection must be scheduled every 100 flying hours or every two years whichever comes first (EN/LTF norm).

We strongly recommend that any repairs should be done in a specialist repair shop by qualified personnel.

This will guarantee the airworthiness and continued certification of your SKIN 3 .

A thorough pre-flight check must be performed before every flight.

## 7.4 REPAIRS

In the case of small tears, you can temporarily repair these by using the Ripstop tape included in the repair kit, as long as no stitching is required to mend the fabric.

Any other tears or repairs should be done in a specialist repair shop by qualified personnel.

Damaged lines must be repaired or exchanged immediately.

Please refer to the line plan at the end of this manual.

Any repair should be done in a specialist repair shop by qualified personnel.

Niviuk cannot be held responsible for any damage caused by incorrect repairs.

## 8. SAFETY AND RESPONSIBILITY

It is well known that free-flying with a paraglider is considered a high-risk sport, where safety depends on the person who is practicing it.

Incorrect use of this equipment may cause severe, life-changing injuries to the pilot, or even death. Manufacturers and dealers cannot be held responsible for your decisions, actions or accidents that may result from participating in this sport.

You must not use this equipment if you have not been properly trained to use it. Do not take advice or accept any informal training from anyone who is not properly qualified as a flight instructor.

## 9. GARANTEE

The equipment and components are covered by a 2-year warranty against any manufacturing defect.

The warranty does not cover misuse of the equipment.

## 10. ANNEXES



## 10. TECHNICAL DATA

### 10.1 TECHNICAL DATA

<b>SKIN 3</b>			<b>16</b>	<b>18</b>	<b>20</b>
CELLS	NUMBER		45	45	45
ASPECT RATIO	FLAT		5,5	5,5	5,5
AREA	FLAT	M2	16	18	20
	PROJECTED	M2	13,52	15,21	16,9
SPAN	FLAT	M	9,38	9,95	10,49
CORD	MAXIMUM	M	2,04	2,17	2,29
LINES	TOTAL	M	251	267	282
	MAIN		2/3/2/2	2/3/2/2	2/3/2/2
RISERS	NUMBER	4	A/B/C/D	A/B/C/D	A/B/C/D
	ACCELERATOR	MM	45	45	45
TOTAL WEIGHT IN FLIGHT	MIN-MAX	KG	60-85	70-90	85-110
GLIDER WEIGHT		KG	2,2	2,4	2,6
CERTIFICATION	EN/LTF		926-1	B	B

## 10.2 MATERIALS DESCRIPTION

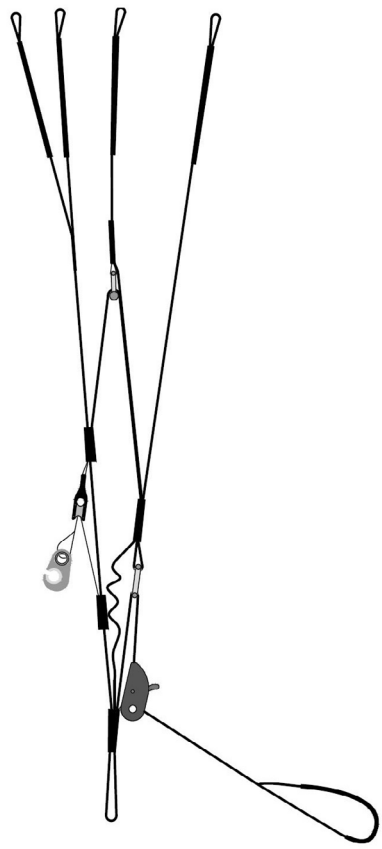
CANOPY	FABRIC CODE	SUPPLIER
UPPER SURFACE	70032 E3W	PORCHER IND (FRANCE)
BOTTOM SURFACE	70000 E3H	PORCHER IND (FRANCE)
RIBS	70032 E4D	PORCHER IND (FRANCE)
LOOPS	LKI - 10	KOLON IND. (KOREA)
TRAILING EDGE REINFOR- CEMENT	MYLAR 20	D-P (GERMANY)
RIB REINFORCEMENT	LTN-0.8 STICK	SPORTWARE CO. (CHINA)
THREAD	SERAFIL 60	AMAN (GERMANY)

SUSPENSION LINES	FABRIC CODE	SUPPLIER
UPPER CASCADES	DC - 40	LIROS GMHB (GERMANY)
UPPER CASCADES	DC - 60	LIROS GMHB (GERMANY)
MIDDLE CASCADES	DC - 60	LIROS GMHB (GERMANY)
MIDDLE CASCADES	8000/U - 90	EDELRID (GERMANY)
MIDDLE CASCADES	TNL-80	TEIJIM LIMITED (JAPAN)
MIDDLE CASCADES	TNL-140	TEIJIM LIMITED (JAPAN)
MAIN	TNL-220	TEIJIM LIMITED (JAPAN)
MAIN	TNL-280	TEIJIM LIMITED (JAPAN)
MAIN BREAK	TARAX 200	EDERLID (GERMANY)
THREAD	SERAFIL 60	AMAN (GERMANY)

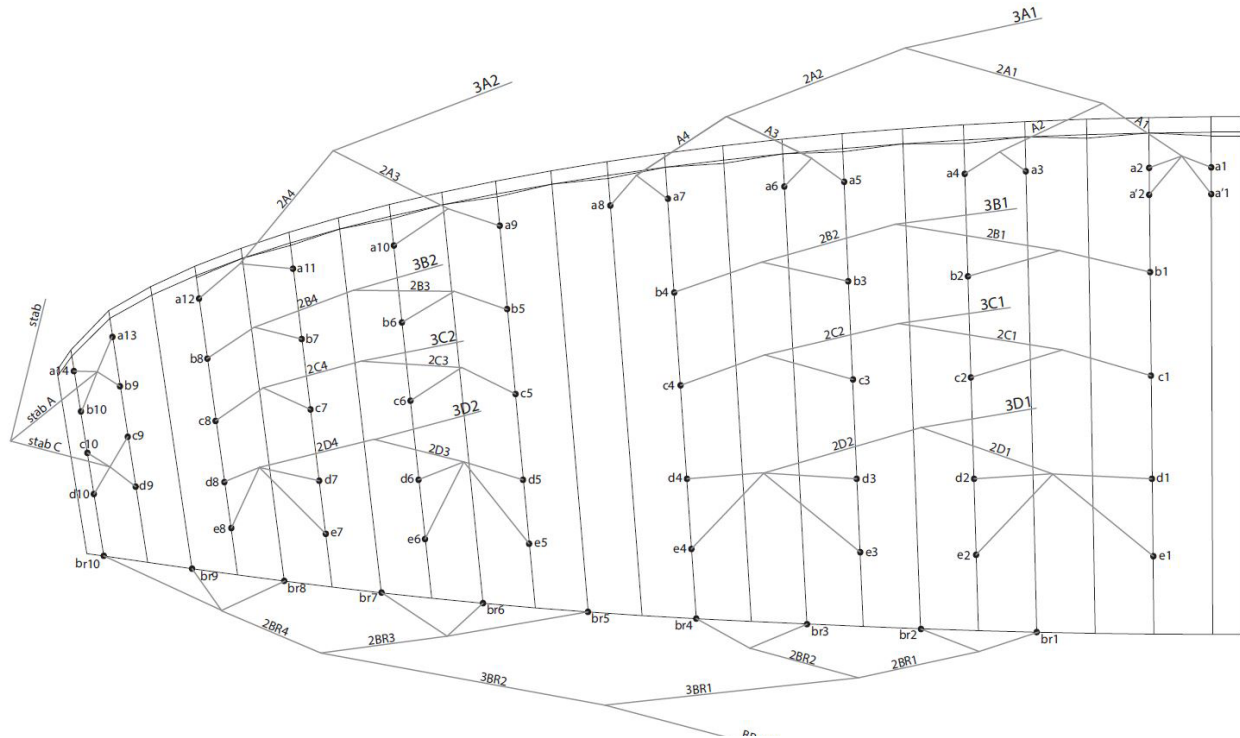
RISERS	FABRIC CODE	SUPPLIER
MATERIAL	3455	COUSIN (FRANCE)
COLOR INDICATOR	210D	TECNI SANGLES (FRANCE)
THREAD	V138	COATS (ENGLAND)
MAILLONS	3.5	ANSUNG PRECISION (KOREA)
PULLEYS	PY - 1304-2	ANSUNG PRECISION (KOREA)

10.3 RISERS PLAN

A	B	C	D
3A1	3B1	3C1	3D1
3A2	3B2	3C2	3D2
	stab		



# 10.4 SUSPENSION PLAN



## 10.5 DIMENSIONS SKIN 3 16

LINES HEIGHT mm							
	A	a'	B	C	D	E	br
1	6171	6230	6033	6052	6069	6141	6140
2	6081	6149	5925	5935	5957	6029	5959
3	6001		5886	5892	5898	5969	5800
4	5994		5888	5891	5901	5959	5816
5	5970		5768	5756	5781	5847	5685
6	5939		5663	5651	5672	5736	5562
7	5928		5583	5579	5598	5653	5543
8	5953		5560	5554	5574	5616	5495
9	5813		5361	5376	5420		5513
10	5689		5327	5338	5384		5631
11	5606						
12	5572						
13	5401						
14	5339						

RISERS LENGHT mm					
	A	B	C	D	
	480	480	480	480	STANDARD
	440	440	460	480	ACCELERATED
	480	480	505	530	TRIM OPEN
	440	440	485	530	ACCELERATED + TRIM OPEN

## 10.6 DIMENSIONS SKIN 3 18

LINES HEIGHT mm							
	A	a'	B	C	D	E	br
1	6570	6628	6404	6413	6445	6528	6521
2	6476	6541	6293	6296	6331	6411	6333
3	6398		6258	6253	6276	6348	6165
4	6392		6262	6253	6278	6343	6183
5	6342		6124	6119	6139	6212	6052
6	6308		6009	6008	6029	6093	5924
7	6295		5934	5931	5952	6008	5903
8	6325		5909	5902	5926	5973	5854
9	6170		5697	5709	5754		5872
10	6037		5656	5669	5717		5995
11	5956						
12	5918						
13	5737						
14	5670						

RISERS LENGHT mm					
	A	B	C	D	
	480	480	480	480	STANDARD
	440	440	460	480	ACCELERATED
	480	480	505	530	TRIM OPEN
	440	440	485	530	ACCELERATED + TRIM OPEN



## 10.7 DIMENSIONS SKIN 3 20

LINES HEIGHT mm

	A	a'	B	C	D	E	br
1	6917	6971	6745	6753	6790	6877	6892
2	6813	6882	6627	6632	6678	6757	6694
3	6727		6592	6600	6607	6689	6519
4	6720		6594	6596	6608	6678	6536
5	6687		6456	6459	6464	6550	6391
6	6656		6338	6337	6351	6423	6255
7	6651		6258	6252	6273	6336	6230
8	6679		6237	6229	6250	6296	6180
9	6514		6017	6033	6079		6200
10	6375		5977	5989	6037		6329
11	6288						
12	6251						
13	6059						
14	5991						

RISERS LENGHT mm

	A	B	C	D	
	480	480	480	480	STANDARD
	440	440	460	480	ACCELERATED
	480	480	505	530	TRIM OPEN
	440	440	485	530	ACCELERATED + TRIM OPEN

## 10.10 CERTIFICATION SPECIMEN TEST

### SKIN 3 18

AIR TURQUOISE SA | PARA-TEST.COM

Route du Pré-au-Comte 8 • CH-1844 Villeneuve • +41 (0)21 955 65 65

Test laboratory for paragliders, paraglider harnesses and paraglider reserve parachutes.



**AK NIVIUK**

Classification: **B**

In accordance with standards EN 926-1:2015, EN 926-2:2013 and LTF NFL II-91/09:

Date of issue (DMY):

Manufacturer:

Model:

Serial number:

PG\_1568.2019

29.10.2019

Niviuk Gliders / Air Games S.L.

Skin 3 18

OIKT3188V1

#### Configuration during flight tests

Paraglider		Accessories	
Maximum weight in flight (kg)	90	Range of speed system (cm)	0
Minimum weight in flight (kg)	70	Speed range using brakes (km/h)	13
Glider's weight (kg)	2.4	Total speed range with accessories (km/h)	0
Number of risers	4	Range of trimmers (cm)	0
Projected area (m2)	15.21		

#### Harness used for testing (max weight)

Inspections (whichever happens first)	
Harness type	<b>ABS</b> every 24 months or every 100 flying hours
Harness brand	<b>Supair</b> Warning! Before use refer to user's manual
Harness model	<b>Altiplume M</b> Person or company having presented the glider for testing: <b>None</b>
Harness to risers distance (cm)	<b>44</b>
Distance between risers (cm)	<b>44</b>

1 2 3 4 5 6 7 8 9 10 11 12 13 14 15 16 17 18 19 20 21 22 23  
A A B A 0 0 A A A A B A B B A A A A A 0 A 0

### SKIN 3 20

AIR TURQUOISE SA | PARA-TEST.COM

Route du Pré-au-Comte 8 • CH-1844 Villeneuve • +41 (0)21 955 65 65

Test laboratory for paragliders, paraglider harnesses and paraglider reserve parachutes.



**AK NIVIUK**

Classification: **B**

In accordance with standards EN 926-1:2015, EN 926-2:2013 and LTF NFL II-91/09:

Date of issue (DMY):

Manufacturer:

Model:

Serial number:

PG\_1570.2019

29.10.2019

Niviuk Gliders / Air Games S.L.

Skin 3 20

OISK32OPS

#### Configuration during flight tests

Paraglider		Accessories	
Maximum weight in flight (kg)	110	Range of speed system (cm)	0
Minimum weight in flight (kg)	85	Speed range using brakes (km/h)	13
Glider's weight (kg)	2.5	Total speed range with accessories (km/h)	0
Number of risers	4	Range of trimmers (cm)	0
Projected area (m2)	16.9		

#### Harness used for testing (max weight)

Inspections (whichever happens first)	
Harness type	<b>ABS</b> every 24 months or every 100 flying hours
Harness brand	<b>Advance</b> Warning! Before use refer to user's manual
Harness model	<b>Success 4 M</b> Person or company having presented the glider for testing: <b>None</b>
Harness to risers distance (cm)	<b>44</b>
Distance between risers (cm)	<b>46</b>

1 2 3 4 5 6 7 8 9 10 11 12 13 14 15 16 17 18 19 20 21 22 23  
A A B A 0 0 A A A A B A B A A A A A 0 A 0

