

QUBIK

Technical *specifications*



PIVIUK BEYOND
THE GLIDE

TECHNICAL SPECIFICATIONS

			19	21	23	25	27
Cells	Number		59	59	59	59	59
Aspect ratio	Flat		5,5	5,5	5,5	5,5	5,5
	Projected		4,25	4,25	4,25	4,25	4,25
Area	Flat	m ²	19	21	23	25,5	27,5
	Projected	m ²	16,47	18,2	19,94	22,1	23,84
Span	Flat	m	10,22	10,75	11,25	11,84	12,3
Chord	Maximum	m	2,29	2,41	2,51	2,62	2,72
Lines	Total	m	262	277	291	307	320
	Main		2+1/4/3/2	2+1/4/3/2	2+1/4/3/2	2+1/4/3/2	2+1/4/3/2
Risers	Number		A+A'/B/C/D	A+A'/B/C/D	A+A'/B/C/D	A+A'/B/C/D	A+A'/B/C/D
	Speed-bar	mm	80	80	80	80	80
	Trimmers	mm	140	140	140	140	140
Speed range	Closed trim	km/h	40 (± 2 km/h)	40 (± 2 km/h)	40 (± 2 km/h)	40 (± 2 km/h)	40 (± 2 km/h)
	Open trim	km/h	56 (± 2 km/h)	56 (± 2 km/h)	56 (± 2 km/h)	56 (± 2 km/h)	56 (± 2 km/h)
	Top speed	km/h	65 (± 2 km/h)	65 (± 2 km/h)	65 (± 2 km/h)	65 (± 2 km/h)	65 (± 2 km/h)
Glider weight		kg	4,7	5,1	5,4	5,9	6,3
Total weight in flight	Min-Max	kg	60-100	70-120	80-140	100-160	110-180
Certification			DGAC/EN 926-1	DGAC/EN 926-1	DGAC/EN 926-1	DGAC/EN 926-1	DGAC/EN 926-1

The total weight of the wing may differ ±2% due to variations in the weight of the fabric supplied by the manufacturers.

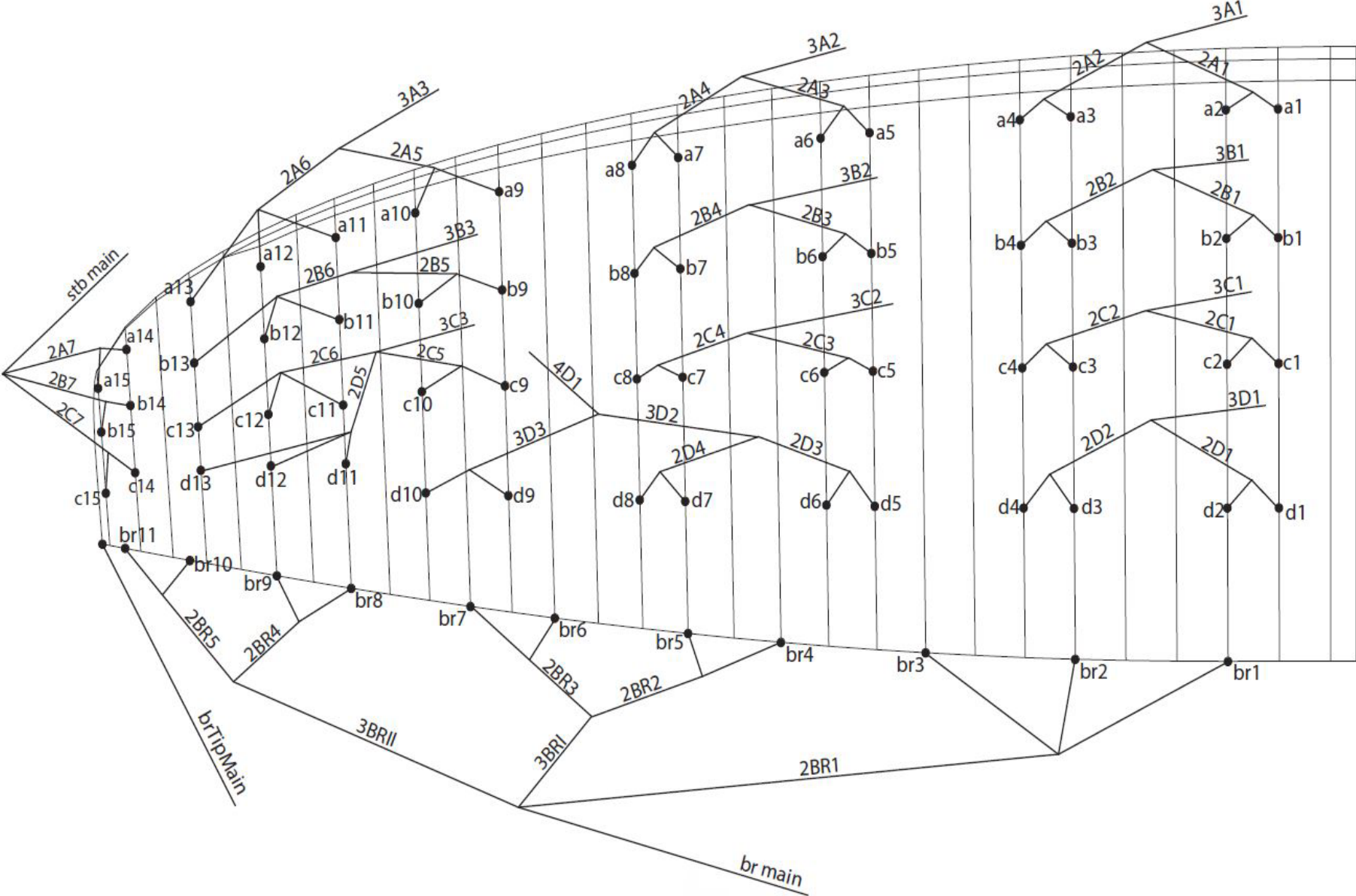
MATERIALS

CANOPY	FABRIC CODE	SUPPLIER
UPPER SURFACE	N20 DMF	DOMINICO TEX CO (KOREA)
BOTTOM SURFACE	N20 DMF	DOMINICO TEX CO (KOREA)
PROFILES	9017 E29	PORCHER IND (FRANCE)
DIAGONALS	9017 E29	PORCHER IND (FRANCE)
LOOPS	LKI - 10	KOLON IND. (KOREA)
REINFORCEMENT LOOPS	W-420	D-P (GERMANY)
TRAILING EDGE REINFORCEMENT	MYLAR	D-P (GERMANY)
RIBS REINFORCEMENT	LTN-0.8 STICK	SPORTWARE CO.CHINA
THREAD	SERAFIL 60	AMAN (GERMANY)

SUSPENSION LINES	FABRIC CODE	SUPPLIER
UPPER CASCADES	TNL - 80	TEIJIM LIMITED (JAPAN)
UPPER CASCADES	TNL - 140	TEIJIM LIMITED (JAPAN)
MIDDLE CASCADES	TNL - 80	TEIJIM LIMITED (JAPAN)
MIDDLE CASCADES	TNL - 140	TEIJIM LIMITED (JAPAN)
MIDDLE CASCADES	TNL - 220	TEIJIM LIMITED (JAPAN)
MAIN	TNL - 140	TEIJIM LIMITED (JAPAN)
MAIN	TNL - 220	TEIJIM LIMITED (JAPAN)
MAIN	TNL - 280	TEIJIM LIMITED (JAPAN)
MAIN	TNL - 400	TEIJIM LIMITED (JAPAN)
MAIN BREAK	TNL - 280	TEIJIM LIMITED (JAPAN)
THREAD	SERAFIL 60	AMAN (GERMANY)

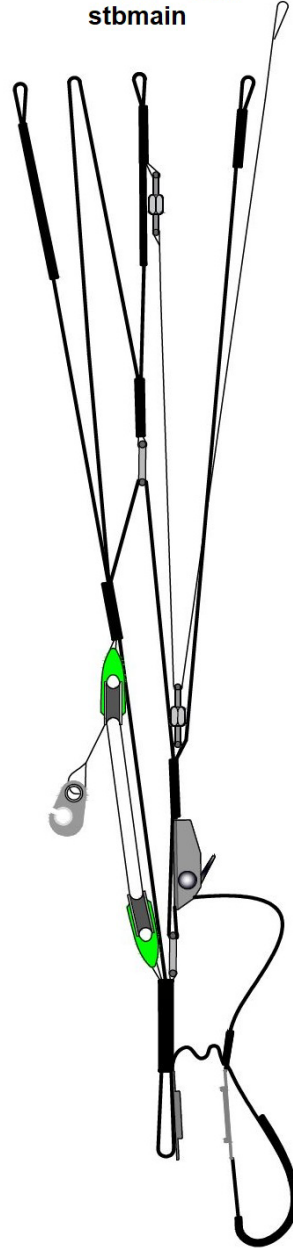
RISERS	FABRIC CODE	SUPPLIER
MATERIAL	WD103	COUSIN (FRANCE)
COLOR INDICATOR	PAD	TECNI SANGLES (FRANCE)
THREAD	V138	COATS (ENGLAND)
MAILLONS	MRI4	ANSUNG PRECISION (KOREA)
PULLEYS	ID018041	RONSTAN (AUSTRALIA)

LINE PLAN



RISER PLAN

A	A'	B	C	D
3A1	3A3	3B1	3C1	3D1
3A2		3B2	3C2	4D1
		3B3	3C3	
		stbmain		



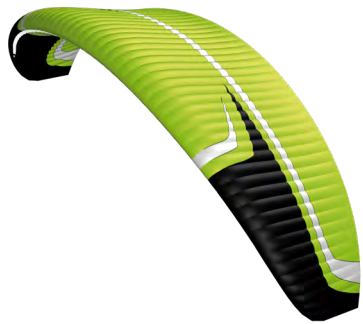
COLORS



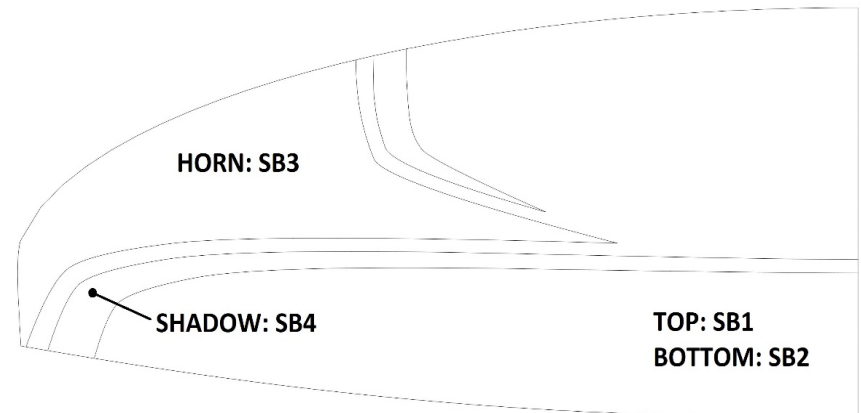
THUNDER	SB1	GOLD	TOP	REF: 939
	SB2	GOLD	BOTTOM	REF: 939
	SB3	BLACK	HORN	REF: 102
	SB4	WHITE	SHADOW	REF: 001



THUNDER	SB1	RED	TOP	REF: 636
	SB2	RED	BOTTOM	REF: 636
	SB3	BLACK	HORN	REF: 102
	SB4	WHITE	SHADOW	REF: 001



THUNDER	SB1	LIMA	TOP	REF: 500
	SB2	LIMA	BOTTOM	REF: 500
	SB3	BLACK	HORN	REF: 102
	SB4	WHITE	SHADOW	REF: 001



WING LOAD

QUBIK

19		21		23		25		27	
P.T.V.	KG/M2	P.T.V.	KG/M2	P.T.V.	KG/M2	P.T.V.	KG/M2	P.T.V.	KG/M2
60	= 3,16	70	= 3,33	80	= 3,48	100	= 3,92	110	= 4,00
65	= 3,42	75	= 3,57	85	= 3,70	105	= 4,12	115	= 4,18
70	= 3,68	80	= 3,81	90	= 3,91	110	= 4,31	120	= 4,36
75	= 3,95	85	= 4,05	95	= 4,13	115	= 4,51	125	= 4,55
80	= 4,21	90	= 4,29	100	= 4,35	120	= 4,71	130	= 4,73
85	= 4,47	95	= 4,52	105	= 4,57	125	= 4,90	135	= 4,91
90	= 4,74	100	= 4,76	110	= 4,78	130	= 5,10	140	= 5,09
95	= 5,00	105	= 5,00	115	= 5,00	135	= 5,29	145	= 5,27
100	= 5,26	110	= 5,24	120	= 5,22	140	= 5,49	150	= 5,45
		115	= 5,48	125	= 5,43	145	= 5,69	155	= 5,64
		120	= 5,71	130	= 5,65	150	= 5,88	160	= 5,82
				135	= 5,87	155	= 6,08	165	= 6,00
				140	= 6,09	160	= 6,27	170	= 6,18
								175	= 6,36
								180	= 6,55

LINES TECHNICAL DATA

QUBIK 19

REF.	MAT.	kg	COLOR	mm	REF.	MAT.	kg	COLOR	mm	REF.	MAT.	kg	COLOR	mm	REF.	MAT.	kg	COLOR	mm	REF.	MAT.	kg	COLOR	mm	
A					B					C					D					BRAKE					
a1	TNL	140	GREEN	284	b1	TNL	140	BLUE	281	c1	TNL	80	BLUE	283	d1	TNL	80	BLUE	286	br1	TNL	80	RED	1736	
a2	TNL	140	GREEN	241	b2	TNL	140	BLUE	239	c2	TNL	80	BLUE	232	d2	TNL	80	BLUE	228	br2	TNL	80	RED	1343	
a3	TNL	140	GREEN	250	b3	TNL	140	BLUE	247	c3	TNL	80	BLUE	240	d3	TNL	80	BLUE	235	br3	TNL	80	RED	1164	
a4	TNL	140	GREEN	273	b4	TNL	140	BLUE	270	c4	TNL	80	BLUE	273	d4	TNL	80	BLUE	277	br4	TNL	80	RED	728	
a5	TNL	140	GREEN	266	b5	TNL	80	BLUE	262	c5	TNL	80	BLUE	264	d5	TNL	80	BLUE	270	br5	TNL	80	RED	627	
a6	TNL	140	GREEN	235	b6	TNL	80	BLUE	233	c6	TNL	80	BLUE	227	d6	TNL	80	BLUE	211	br6	TNL	80	RED	607	
a7	TNL	80	GREEN	300	b7	TNL	80	BLUE	215	c7	TNL	80	BLUE	209	d7	TNL	80	BLUE	219	br7	TNL	80	RED	646	
a8	TNL	80	GREEN	328	b8	TNL	80	BLUE	246	c8	TNL	80	BLUE	247	d8	TNL	80	BLUE	245	br8	TNL	80	RED	592	
a9	TNL	80	GREEN	993	b9	TNL	80	BLUE	918	c9	TNL	80	BLUE	764	d9	TNL	80	BLUE	484	br9	TNL	80	RED	490	
a10	TNL	80	GREEN	927	b10	TNL	80	BLUE	858	c10	TNL	80	BLUE	669	d10	TNL	80	BLUE	546	br10	TNL	80	RED	750	
a11	TNL	80	GREEN	948	b11	TNL	80	BLUE	877	c11	TNL	80	BLUE	693	d11	TNL	80	BLUE	714	br11	TNL	80	RED	622	
a12	TNL	80	GREEN	894	b12	TNL	80	BLUE	833	c12	TNL	80	BLUE	637	d12	TNL	80	BLUE	655						
a13	TNL	80	GREEN	905	b13	TNL	80	BLUE	852	c13	TNL	80	BLUE	665	d13	TNL	80	BLUE	678						
a14	TNL	80	RED	319	b14	TNL	80	RED	261	c14	TNL	80	RED	235											
a15	TNL	80	RED	275	b15	TNL	80	RED	239	c15	TNL	80	RED	229											
2A1	TNL	220	GREEN	1515	2B1	TNL	220	BLUE	1499	2C1	TNL	140	BLUE	1195	2D1	TNL	140	BLUE	1020	2BR1	TNL	80	red	2414	
2A2	TNL	220	GREEN	1469	2B2	TNL	220	BLUE	1457	2C2	TNL	140	BLUE	1152	2D2	TNL	140	BLUE	981	2BR2	TNL	80	RED	1034	
2A3	TNL	220	GREEN	1381	2B3	TNL	140	BLUE	1.355	2C3	TNL	140	BLUE	1071	2D3	TNL	80	BLUE	1025	2BR3	TNL	80	RED	1007	
2A4	TNL	140	GREEN	1302	2B4	TNL	140	BLUE	1372	2C4	TNL	140	BLUE	1.090	2D4	TNL	80	BLUE	957	2BR4	TNL	80	RED	851	
2A5	TNL	140	GREEN	953	2B5	TNL	140	BLUE	880	2C5	TNL	140	BLUE	709	2D5	TNL	140	BLUE	647	2BR5	TNL	80	RED	403	
2A6	TNL	140	GREEN	886	2B6	TNL	140	BLUE	824	2C6	TNL	140	BLUE	628											
2A7	TNL	140	RED	708	2B7	TNL	140	RED	737	2C7	TNL	140	RED	811							3BRI	TNL	80	RED	1658
																					3BRII	TNL	80	RED	1740
3A1	TNL	400	GREEN	3876	3B1	TNL	400	BLUE	3811	3C1	TNL	280	BLUE	4149	3D1	TNL	220	BLUE	4423	BRTPMAIR	TNL	280	RED	5354	
3A2	TNL	280	GREEN	3931	3B2	TNL	280	BLUE	3888	3C2	TNL	220	BLUE	4199	3D2	TNL	140	BLUE	837	KNOT POINT:				5204	
3A3	TNL	220	GREEN	3566	3B3	TNL	220	BLUE	3668	3C3	TNL	140	BLUE	4059	3D3	TNL	140	BLUE	1553						
															4D1	TNL	220	BLUE	3560	BRMAIN	TNL	280	RED	2820	
										STB MAIN	TNL	140	RED								KNOT POINT 1:			2620	
																					KNOT POINT 2:			2700	

LINES TECHNICAL DATA

QUBIK 21

REF.	MAT.	kg	COLOR	mm	REF.	MAT.	kg	COLOR	mm	REF.	MAT.	kg	COLOR	mm	REF.	MAT.	kg	COLOR	mm	REF.	MAT.	kg	COLOR	mm	
A					B					C					D					BRAKE					
a1	TNL	140	GREEN	298	b1	TNL	140	BLUE	295	c1	TNL	80	BLUE	298	d1	TNL	80	BLUE	301	br1	TNL	80	RED	1824	
a2	TNL	140	GREEN	254	b2	TNL	140	BLUE	252	c2	TNL	80	BLUE	244	d2	TNL	80	BLUE	240	br2	TNL	80	RED	1418	
a3	TNL	140	GREEN	262	b3	TNL	140	BLUE	259	c3	TNL	80	BLUE	252	d3	TNL	80	BLUE	247	br3	TNL	80	RED	1240	
a4	TNL	140	GREEN	287	b4	TNL	140	BLUE	284	c4	TNL	80	BLUE	287	d4	TNL	80	BLUE	291	br4	TNL	80	RED	765	
a5	TNL	140	GREEN	279	b5	TNL	80	BLUE	275	c5	TNL	80	BLUE	278	d5	TNL	80	BLUE	284	br5	TNL	80	RED	659	
a6	TNL	140	GREEN	247	b6	TNL	80	BLUE	246	c6	TNL	80	BLUE	239	d6	TNL	80	BLUE	222	br6	TNL	80	RED	638	
a7	TNL	80	GREEN	315	b7	TNL	80	BLUE	226	c7	TNL	80	BLUE	219	d7	TNL	80	BLUE	230	br7	TNL	80	RED	679	
a8	TNL	80	GREEN	345	b8	TNL	80	BLUE	258	c8	TNL	80	BLUE	260	d8	TNL	80	BLUE	258	br8	TNL	80	RED	623	
a9	TNL	80	GREEN	1044	b9	TNL	80	BLUE	965	c9	TNL	80	BLUE	803	d9	TNL	80	BLUE	508	br9	TNL	80	RED	508	
a10	TNL	80	GREEN	975	b10	TNL	80	BLUE	902	c10	TNL	80	BLUE	704	d10	TNL	80	BLUE	575	br10	TNL	80	RED	789	
a11	TNL	80	GREEN	997	b11	TNL	80	BLUE	922	c11	TNL	80	BLUE	729	d11	TNL	80	BLUE	750	br11	TNL	80	RED	643	
a12	TNL	80	GREEN	940	b12	TNL	80	BLUE	876	c12	TNL	80	BLUE	670	d12	TNL	80	BLUE	689						
a13	TNL	80	GREEN	952	b13	TNL	80	BLUE	897	c13	TNL	80	BLUE	700	d13	TNL	80	BLUE	714						
a14	TNL	80	RED	336	b14	TNL	80	RED	274	c14	TNL	80	RED	247											
a15	TNL	80	RED	289	b15	TNL	80	RED	251	c15	TNL	80	RED	240											
2A1	TNL	220	GREEN	1592	2B1	TNL	220	BLUE	1575	2C1	TNL	140	BLUE	1255	2D1	TNL	140	BLUE	1071	2BR1	TNL	80	red	2681	
2A2	TNL	220	GREEN	1546	2B2	TNL	220	BLUE	1534	2C2	TNL	140	BLUE	1213	2D2	TNL	140	BLUE	1033	2BR2	TNL	80	RED	1087	
2A3	TNL	220	GREEN	1451	2B3	TNL	140	BLUE	1.423	2C3	TNL	140	BLUE	1125	2D3	TNL	80	BLUE	1077	2BR3	TNL	80	RED	1059	
2A4	TNL	140	GREEN	1370	2B4	TNL	140	BLUE	1444	2C4	TNL	140	BLUE	1.147	2D4	TNL	80	BLUE	1007	2BR4	TNL	80	RED	894	
2A5	TNL	140	GREEN	1001	2B5	TNL	140	BLUE	925	2C5	TNL	140	BLUE	745	2D5	TNL	140	BLUE	680	2BR5	TNL	80	RED	403	
2A6	TNL	140	GREEN	932	2B6	TNL	140	BLUE	866	2C6	TNL	140	BLUE	661											
2A7	TNL	140	RED	745	2B7	TNL	140	RED	775	2C7	TNL	140	RED	853							3BRI	TNL	80	RED	1913
																					3BRII	TNL	80	RED	1987
3A1	TNL	400	GREEN	4095	3B1	TNL	400	BLUE	4026	3C1	TNL	280	BLUE	4381	3D1	TNL	220	BLUE	4670	BRTPMAIR	TNL	280	RED	5645	
3A2	TNL	280	GREEN	4159	3B2	TNL	280	BLUE	4113	3C2	TNL	220	BLUE	4440	3D2	TNL	140	BLUE	878	KNOT POINT:				5495	
3A3	TNL	220	GREEN	3777	3B3	TNL	220	BLUE	3884	3C3	TNL	140	BLUE	4296	3D3	TNL	140	BLUE	1634						
															4D1	TNL	220	BLUE	3769	BRMAIN	TNL	280	RED	2780	
										STB MAIN	TNL	140	RED	4359							KNOT POINT 1:			2580	
																					KNOT POINT 2:			2660	

LINES TECHNICAL DATA

QUBIK 23

REF.	MAT.	kg	COLOR	mm	REF.	MAT.	kg	COLOR	mm	REF.	MAT.	kg	COLOR	mm	REF.	MAT.	kg	COLOR	mm	REF.	MAT.	kg	COLOR	mm
A					B					C					D					BRAKE				
a1	TNL	140	GREEN	312	b1	TNL	140	BLUE	309	c1	TNL	80	BLUE	312	d1	TNL	80	BLUE	315	br1	TNL	80	RED	1907
a2	TNL	140	GREEN	266	b2	TNL	140	BLUE	264	c2	TNL	80	BLUE	256	d2	TNL	80	BLUE	251	br2	TNL	80	RED	1489
a3	TNL	140	GREEN	274	b3	TNL	140	BLUE	270	c3	TNL	80	BLUE	263	d3	TNL	80	BLUE	258	br3	TNL	80	RED	1310
a4	TNL	140	GREEN	300	b4	TNL	140	BLUE	298	c4	TNL	80	BLUE	301	d4	TNL	80	BLUE	305	br4	TNL	80	RED	800
a5	TNL	140	GREEN	292	b5	TNL	80	BLUE	288	c5	TNL	80	BLUE	290	d5	TNL	80	BLUE	297	br5	TNL	80	RED	689
a6	TNL	140	GREEN	259	b6	TNL	80	BLUE	257	c6	TNL	80	BLUE	250	d6	TNL	80	BLUE	233	br6	TNL	80	RED	668
a7	TNL	80	GREEN	329	b7	TNL	80	BLUE	236	c7	TNL	80	BLUE	229	d7	TNL	80	BLUE	241	br7	TNL	80	RED	711
a8	TNL	80	GREEN	361	b8	TNL	80	BLUE	271	c8	TNL	80	BLUE	272	d8	TNL	80	BLUE	270	br8	TNL	80	RED	651
a9	TNL	80	GREEN	1092	b9	TNL	80	BLUE	1010	c9	TNL	80	BLUE	840	d9	TNL	80	BLUE	531	br9	TNL	80	RED	525
a10	TNL	80	GREEN	1020	b10	TNL	80	BLUE	944	c10	TNL	80	BLUE	737	d10	TNL	80	BLUE	601	br10	TNL	80	RED	826
a11	TNL	80	GREEN	1044	b11	TNL	80	BLUE	965	c11	TNL	80	BLUE	763	d11	TNL	80	BLUE	785	br11	TNL	80	RED	664
a12	TNL	80	GREEN	985	b12	TNL	80	BLUE	917	c12	TNL	80	BLUE	702	d12	TNL	80	BLUE	721					
a13	TNL	80	GREEN	998	b13	TNL	80	BLUE	939	c13	TNL	80	BLUE	733	d13	TNL	80	BLUE	748					
a14	TNL	80	RED	351	b14	TNL	80	RED	287	c14	TNL	80	RED	259										
a15	TNL	80	RED	302	b15	TNL	80	RED	263	c15	TNL	80	RED	252										
2A1	TNL	220	GREEN	1665	2B1	TNL	220	BLUE	1647	2C1	TNL	140	BLUE	1312	2D1	TNL	140	BLUE	1120	2BR1	TNL	80	red	2937
2A2	TNL	220	GREEN	1620	2B2	TNL	220	BLUE	1607	2C2	TNL	140	BLUE	1271	2D2	TNL	140	BLUE	1082	2BR2	TNL	80	RED	1137
2A3	TNL	220	GREEN	1517	2B3	TNL	140	BLUE	1.489	2C3	TNL	140	BLUE	1176	2D3	TNL	80	BLUE	1127	2BR3	TNL	80	RED	1107
2A4	TNL	140	GREEN	1435	2B4	TNL	140	BLUE	1512	2C4	TNL	140	BLUE	1.201	2D4	TNL	80	BLUE	1055	2BR4	TNL	80	RED	935
2A5	TNL	140	GREEN	1048	2B5	TNL	140	BLUE	968	2C5	TNL	140	BLUE	780	2D5	TNL	140	BLUE	712	2BR5	TNL	80	RED	405
2A6	TNL	140	GREEN	976	2B6	TNL	140	BLUE	907	2C6	TNL	140	BLUE	692										
2A7	TNL	140	RED	779	2B7	TNL	140	RED	811	2C7	TNL	140	RED	892						3BRI	TNL	80	RED	2156
																				3BRII	TNL	80	RED	2225
3A1	TNL	400	GREEN	4303	3B1	TNL	400	BLUE	4232	3C1	TNL	280	BLUE	4603	3D1	TNL	220	BLUE	4906	BRTPMAIR	TNL	280	RED	5984
3A2	TNL	280	GREEN	4375	3B2	TNL	280	BLUE	4328	3C2	TNL	220	BLUE	4670	3D2	TNL	140	BLUE	917	KNOT POINT:				5834
3A3	TNL	220	GREEN	3979	3B3	TNL	220	BLUE	4090	3C3	TNL	140	BLUE	4522	3D3	TNL	140	BLUE	1711					
										3979					4D1	TNL	220	BLUE	3969	BRMAIN	TNL	280	RED	2720
										STB MAIN	TNL	140	RED	4588						KNOT POINT 1:				2520
																				KNOT POINT 2:				2600

LINES TECHNICAL DATA

QUBIK 25

REF.	MAT.	kg	COLOR	mm	REF.	MAT.	kg	COLOR	mm	REF.	MAT.	kg	COLOR	mm	REF.	MAT.	kg	COLOR	mm	REF.	MAT.	kg	COLOR	mm
A					B					C					D					BRAKE				
a1	TNL	140	GREEN	329	b1	TNL	140	BLUE	325	c1	TNL	80	BLUE	328	d1	TNL	80	BLUE	331	br1	TNL	80	RED	2006
a2	TNL	140	GREEN	281	b2	TNL	140	BLUE	278	c2	TNL	80	BLUE	270	d2	TNL	80	BLUE	265	br2	TNL	80	RED	1573
a3	TNL	140	GREEN	288	b3	TNL	140	BLUE	284	c3	TNL	80	BLUE	277	d3	TNL	80	BLUE	271	br3	TNL	80	RED	1393
a4	TNL	140	GREEN	316	b4	TNL	140	BLUE	314	c4	TNL	80	BLUE	317	d4	TNL	80	BLUE	321	br4	TNL	80	RED	843
a5	TNL	140	GREEN	307	b5	TNL	80	BLUE	303	c5	TNL	80	BLUE	306	d5	TNL	80	BLUE	313	br5	TNL	80	RED	726
a6	TNL	140	GREEN	273	b6	TNL	80	BLUE	271	c6	TNL	80	BLUE	264	d6	TNL	80	BLUE	246	br6	TNL	80	RED	703
a7	TNL	80	GREEN	347	b7	TNL	80	BLUE	249	c7	TNL	80	BLUE	241	d7	TNL	80	BLUE	253	br7	TNL	80	RED	748
a8	TNL	80	GREEN	381	b8	TNL	80	BLUE	285	c8	TNL	80	BLUE	287	d8	TNL	80	BLUE	284	br8	TNL	80	RED	685
a9	TNL	80	GREEN	1150	b9	TNL	80	BLUE	1063	c9	TNL	80	BLUE	884	d9	TNL	80	BLUE	559	br9	TNL	80	RED	546
a10	TNL	80	GREEN	1074	b10	TNL	80	BLUE	994	c10	TNL	80	BLUE	776	d10	TNL	80	BLUE	633	br10	TNL	80	RED	870
a11	TNL	80	GREEN	1099	b11	TNL	80	BLUE	1.016	c11	TNL	80	BLUE	804	d11	TNL	80	BLUE	827	br11	TNL	80	RED	690
a12	TNL	80	GREEN	1037	b12	TNL	80	BLUE	966	c12	TNL	80	BLUE	739	d12	TNL	80	BLUE	760					
a13	TNL	80	GREEN	1051	b13	TNL	80	BLUE	989	c13	TNL	80	BLUE	773	d13	TNL	80	BLUE	788					
a14	TNL	80	RED	370	b14	TNL	80	RED	302	c14	TNL	80	RED	272										
a15	TNL	80	RED	318	b15	TNL	80	RED	277	c15	TNL	80	RED	265										
2A1	TNL	220	GREEN	1751	2B1	TNL	220	BLUE	1732	2C1	TNL	140	BLUE	1380	2D1	TNL	140	BLUE	1178	2BR1	TNL	80	red	3244
2A2	TNL	220	GREEN	1708	2B2	TNL	220	BLUE	1694	2C2	TNL	140	BLUE	1340	2D2	TNL	140	BLUE	1142	2BR2	TNL	80	RED	1198
2A3	TNL	220	GREEN	1596	2B3	TNL	140	BLUE	1.566	2C3	TNL	140	BLUE	1237	2D3	TNL	80	BLUE	1186	2BR3	TNL	80	RED	1166
2A4	TNL	140	GREEN	1512	2B4	TNL	140	BLUE	1593	2C4	TNL	140	BLUE	1.266	2D4	TNL	80	BLUE	1111	2BR4	TNL	80	RED	983
2A5	TNL	140	GREEN	1103	2B5	TNL	140	BLUE	1019	2C5	TNL	140	BLUE	821	2D5	TNL	140	BLUE	750	2BR5	TNL	80	RED	408
2A6	TNL	140	GREEN	1028	2B6	TNL	140	BLUE	955	2C6	TNL	140	BLUE	729										
2A7	TNL	140	RED	821	2B7	TNL	140	RED	854	2C7	TNL	140	RED	939						3BRI	TNL	80	RED	2445
																				3BRII	TNL	80	RED	2509
3A1	TNL	400	GREEN	4552	3B1	TNL	400	BLUE	4477	3C1	TNL	280	BLUE	4868	3D1	TNL	220	BLUE	5187	BRTPMAIR	TNL	280	RED	6233
3A2	TNL	280	GREEN	4633	3B2	TNL	280	BLUE	4583	3C2	TNL	220	BLUE	4944	3D2	TNL	140	BLUE	964	KNOT POINT:				6083
3A3	TNL	220	GREEN	4219	3B3	TNL	220	BLUE	4336	3C3	TNL	140	BLUE	4791	3D3	TNL	140	BLUE	1803					
										3979					4D1	TNL	220	BLUE	4207	BRMAIN	TNL	280	RED	2680
										STB MAIN	TNL	140	RED	4862						KNOT POINT 1:				2480
																				KNOT POINT 2:				2560

LINE MEASUREMENTS

QUBIK - 19

LINES HEIGHT MM

	A	B	C	D	br
1	5660	5576	5612	5714	6760
2	5617	5534	5561	5656	6367
3	5580	5500	5526	5624	6188
4	5603	5523	5559	5666	6030
5	5563	5490	5519	5677	5929
6	5532	5461	5482	5618	5882
7	5518	5460	5483	5558	5921
8	5546	5491	5521	5584	5793
9	5497	5451	5517	5582	5691
10	5431	5391	5422	5644	5503
11	5385	5354	5365	5405	5375
12	5331	5310	5309	5346	5194
13	5342	5329	5337	5369	
14	5130	5101	5149		
15	5086	5079	5143		

RISERS LENGHT MM

	A	B	C	D	
	485	485	485	520	STANDARD
	485	555	625	730	TRIMMER OPENED
	406	515	625	770	ACCELERATED

QUBIK - 21

LINES HEIGHT MM

	A	B	C	D	br
1	5970	5881	5919	6027	7075
2	5926	5838	5865	5966	6669
3	5888	5804	5831	5935	6491
4	5913	5829	5866	5979	6335
5	5874	5796	5828	5993	6229
6	5842	5767	5789	5931	6180
7	5829	5768	5791	5869	6221
8	5859	5800	5832	5897	6074
9	5807	5759	5829	5896	5959
10	5738	5696	5730	5963	5749
11	5691	5657	5671	5711	5603
12	5634	5611	5612	5650	5485
13	5646	5632	5642	5675	
14	5425	5393	5444		
15	5378	5370	5437		

RISERS LENGHT MM

	A	B	C	D	
	485	485	485	520	STANDARD
	485	555	625	730	TRIMMER OPENED
	406	515	625	770	ACCELERATED

LINE MEASUREMENTS

QUBIK - 23

LINES HEIGHT MM

	A	B	C	D	br
1	6265	6173	6212	6326	7354
2	6219	6128	6156	6262	6936
3	6182	6094	6122	6231	6757
4	6208	6122	6160	6278	6603
5	6169	6090	6121	6295	6492
6	6136	6059	6081	6231	6441
7	6124	6061	6085	6167	6484
8	6156	6096	6128	6196	6321
9	6104	6053	6127	6196	6195
10	6032	5987	6024	6266	5966
11	5984	5947	5962	6004	5804
12	5925	5899	5901	5940	5824
13	5938	5921	5932	5967	
14	5703	5671	5724		
15	5654	5647	5717		

RISERS LENGHT MM

	A	B	C	D	
	485	485	485	520	STANDARD
	485	555	625	730	TRIMMER OPENED
	406	515	625	770	ACCELERATED

QUBIK - 25

LINES HEIGHT MM

	A	B	C	D	br
1	6617	6519	6561	6681	7720
2	6569	6472	6503	6615	7287
3	6533	6440	6470	6585	7107
4	6561	6470	6510	6635	6956
5	6521	6437	6472	6655	6839
6	6487	6405	6430	6588	6784
7	6477	6410	6436	6520	6829
8	6511	6446	6482	6551	6647
9	6457	6403	6481	6554	6508
10	6381	6334	6373	6628	6257
11	6331	6292	6309	6353	6077
12	6269	6242	6244	6286	6073
13	6283	6265	6278	6314	
14	6038	6003	6058		
15	5986	5978	6051		

RISERS LENGHT MM

	A	B	C	D	
	485	485	485	520	STANDARD
	485	555	625	730	TRIMMER OPENED
	406	515	625	770	ACCELERATED

LINE MEASUREMENTS

QUBIK - 27

LINES HEIGHT MM

	A	B	C	D	br
1	6886	6785	6827	6953	8056
2	6837	6737	6768	6885	7611
3	6801	6704	6735	6855	7430
4	6831	6735	6777	6908	7281
5	6792	6704	6739	6930	7159
6	6757	6672	6696	6860	7102
7	6747	6677	6704	6792	7149
8	6782	6715	6752	6824	6953
9	6728	6671	6753	6828	6804
10	6650	6600	6641	6906	6539
11	6598	6556	6573	6620	6345
12	6534	6505	6507	6550	6370
13	6548	6529	6542	6580	
14	6293	6257	6314		
15	6239	6231	6306		

RISERS LENGHT MM

	A	B	C	D	
	485	485	485	520	STANDARD
	485	555	625	730	TRIMMER OPENED
	406	515	625	770	ACCELERATED

SUSPENSION TECHNICAL DATA

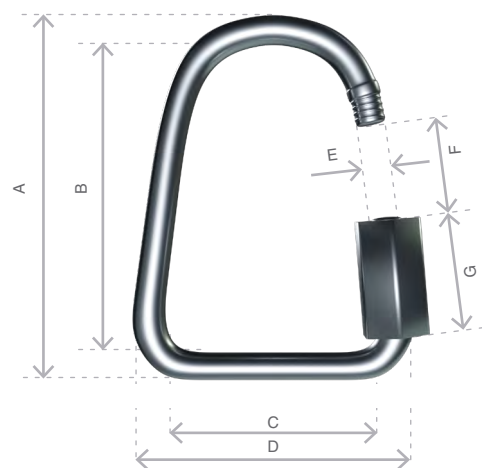
MATERIAL CODE		TNL	TNL	TNL	TNL	TNL
STRENGTH CODE		080	140	220	280	400
DIAMETER m/m	∅	1,1	1,4	1,6	1,8	2,3
CORE MATERIAL		TECHNORA	TECHNORA	TECHNORA	TECHNORA	TECHNORA
SLEEVE MATERIAL		POLYESTER	POLYESTER	POLYESTER	POLYESTER	POLYESTER
WEIGHT G/M	TOTAL	1,1	1,2	1,6	2,7	4
BREAKING STRENGTH daN	MINIMUM	80	140	220	280	314
	MAXIMUM	92	160	250	320	360
STRENGTH AFTER						
5.000 BENDING	TEST EN	36,7	76,1	114,2	134,7	184,4
CYCLES						
ELONGATION AT	5 daN en %	0,3	0,2	0,2	0,2	0,05
	10 daN en %	0,5	0,3	0,3	0,3	0,1
	15 daN en %	0,7	0,5	0,5	0,4	0,2
	20 daN en %	1	0,6	0,6	0,4	0,2
	25 daN en %	1,3	0,8	0,7	0,5	0,3
	30 daN en %	2,3	1,5	1,2	0,9	0,6
	75 daN en %	2,8	2,3	1,8	1,3	0,8
	100 daN en %		2,7	2,2	1,7	1,1
	125 daN en %		3,2	2,7	2	1,4
	150 daN en %			3	2,3	1,7
	175 daN en %			3,3	2,7	2
	200 daN en %			3,8	2,8	2,2
ELONGATION MAX. BREAKING STRENGTH %	3	3,4	4	4,1	4,6	4,3

MAILLON & PULLEY TECHNICAL DATA

DESCRIPTION

MAILLON	DELTA
CODE	3.5
MATERIAL	STAINLESS STEEL
SIZE	3 m/m
WEIGHT	5 G/PIECE
QUANTITY	8 PIECES
INSERTS	4 GREEN / 4 BLACK

TECHNICAL SPECIFICATIONS



DIMENSIONS	m/m
A	28
B	20
C	38
D	30
E	4
F	11
G	4
LOAD	KG
WORKING LIMIT	150
BREAKING	750

MATERIAL

AISI 304 STAINLESS STEEL	STANDARD
--------------------------	----------

CLOSING APPLIED BY MANUAL & ENTIRE SCREWING OF THE NUT
TO GUARANTEE THE HIGHEST SAFETY (NO THREAD SHOULD BE OBVIOUS)

SYSTEMATIC CONTROL OF MAILLON QUICK-LINKS BEFORE EVERY FLIGHT

THREAD TECHNICAL DATA

SAIL MAKING

NAME	SERAFIL
NUM. OF REFERENCE	60
MATERIAL	POLYESTER
TYPE OF FINISH	SILK
LINEAR DENSITY	NM 61 / 3 (DTEX 163 * 3)
BREAKING STRENGTH	3,000 CN
ELONGATION	17,00%

PROPIETIES SERAFIL

SOLIDITY ARTIFICIAL LIGTH	ISO 105 B02 > 5 - 6
SOLIDITY SWEAT	ISO 105 E04 > 4
SOLIDITY WASHING	ISO 105 C04 > 3
SOLIDITY GRAZE IN DRY	ISO 105 X12 > 4
SOLIDITY WASHING IN DRY	ISO 105 D01 > 3 - 4

TREATMENT WATER REPELLENT	WR
---------------------------	----

RISERS MAKING

NAME	COATS BONDED C.F.P.
NUM. OF REFERENCE	V138
MATERIAL	POLYESTER
TYPE OF FINISH	SILK
BREAKING STRENGTH	9,5 KG
ELONGATION	19%

RISERS TECHNICAL DATA

RISERS

NUM. OF REFERENCE	WD103
MATERIAL	POLYESTER & TECHNORA
WIDTH	19 M/M
THICKNESS	1,6 M/M
BREAKING STRENGTH	850 KG
ELONGATION	MAX. 12%
WEIGHT	23 G/M
COLOR	BLACK

COLOR INDICATOR

NUM. OF REFERENCE	IC-G 1-2
MATERIAL	POLYESTER
WIDTH	70 M/M
THICKNESS	0,80 M/M
BREAKING STRENGTH	130 DN
ELONGATION	35 %
WEIGHT	32 G * L.M.
COLOR	GREEN

LOOPS

NUM. OF REFERENCE	LKI - 10
MATERIAL	NYLON
WIDTH	10 M/M
BREAKING STRENGTH	84 KG
ELONGATION	30 %
WEIGHT	5,5 G/M
COLOR	WHITE



Niviuk Paragliders

C/ Del Ter 6 - nave D

17165 La Cellera de Ter - Girona - Spain

+34 972 422 878 | info@niviuk.com

www.niviuk.com