



KOYOT 4

Technical specifications

TECHNICAL DATA

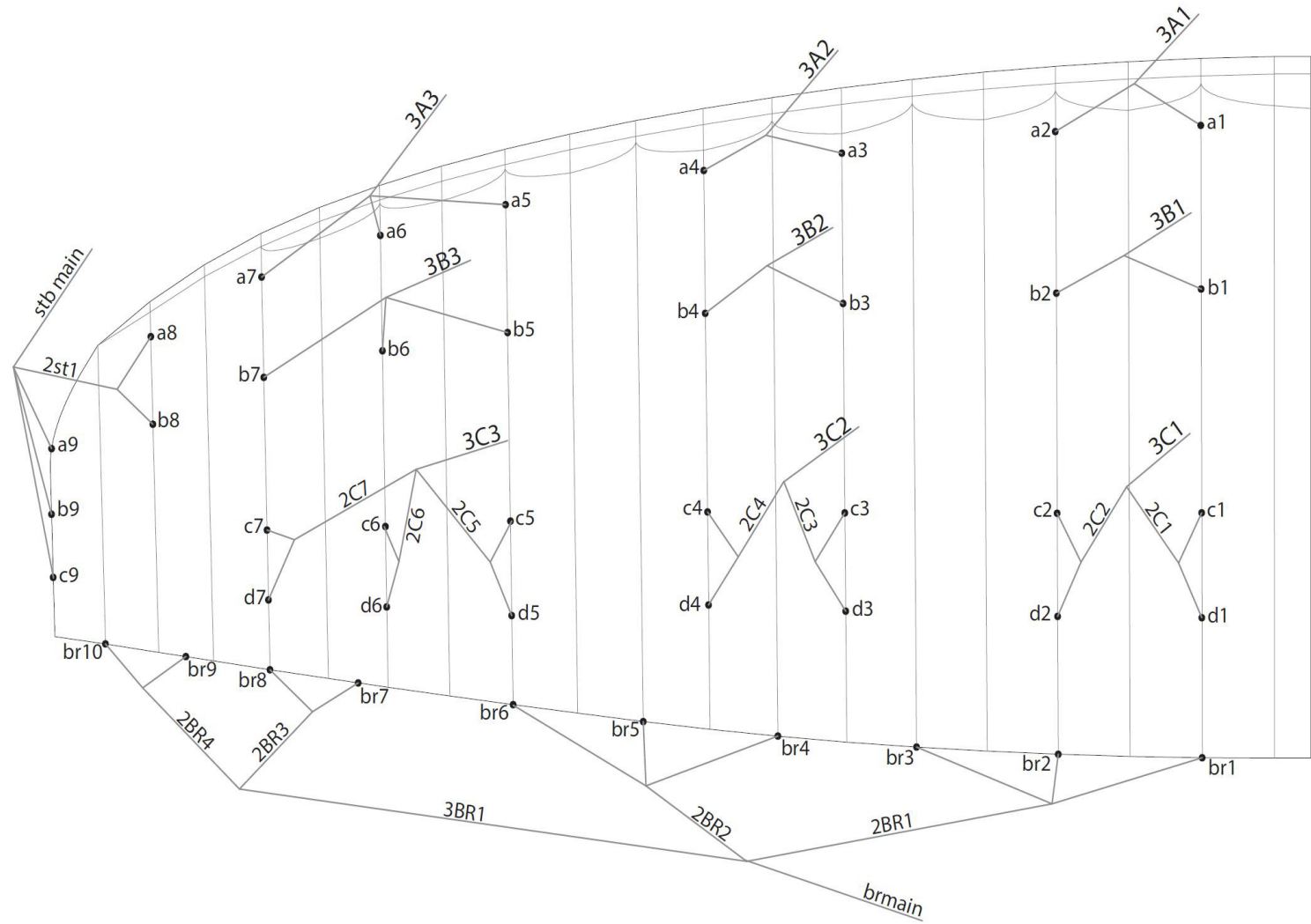
KOYOT 4			22	24	26	28	31
CELLS	NUMBER		39	39	39	39	39
ASPECT RATIO	FLAT		4,75	4,75	4,75	4,75	4,75
AREA	FLAT	M2	22	24	26	28	31
	PROJECTED	M2	18,75	20,45	22,16	23,86	26,42
CORD	MAXIMUM	M	2,64	2,76	2,87	2,98	3,14
LINES	TOTAL	M	220	226	240	245	263
	MAIN		2+1/3/2	2+1/3/2	2+1/3/2	2+1/3/2	2+1/3/2
RISERS	NUMBER	3+1	A+A'/B/C	A+A'/B/C	A+A'/B/C	A+A'/B/C	A+A'/B/C
	ACCELERATOR	MM	130	130	130	130	130
TOTAL WEIGHT IN FLIGHT	MIN-MAX	KG	45-70	60-80	75-95	90-115	110-135
GLIDER WEIGHT		KG	4,2	4,5	4,8	5,1	5,5
CERTIFICATION			A	A	A	A	A

MATERIALS TECHNICAL DATA

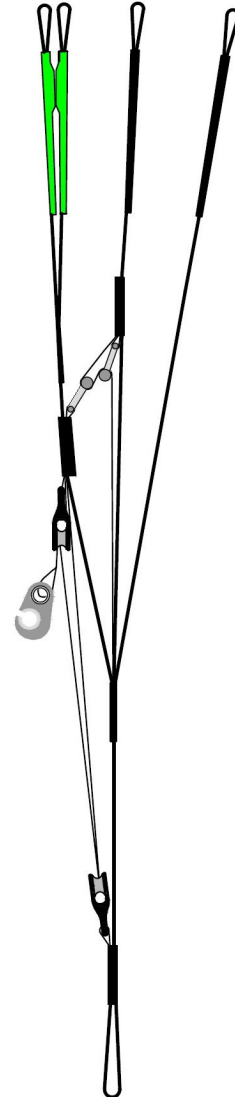
CANOPY	FABRIC CODE	SUPPLIER
UPPER SURFACE	N20 DMF	DOMINICO TEX CO (KOREA)
BOTTOM SURFACE	N20 DMF	DOMINICO TEX CO (KOREA)
PROFILES	9017 E29	PORCHER IND (FRANCE)
DIAGONALS	9017 E29	PORCHER IND (FRANCE)
LOOPS	LKI - 10	KOLON IND. (KOREA)
REINFORCEMENT LOOPS	W-420	D-P (GERMANY)
TRAILING EDGE REINFORCEMENT	MYLAR	D-P (GERMANY)
RIBS REINFORCEMENT	LTN-0.8/1 STICK	SPORTWARE CO.CHINA
THREAD	SERAFIL 60	AMAN (GERMANY)

SUSPENSION LINES	FABRIC CODE	SUPPLIER
UPPER CASCADES	TNL - 80	TEIJIM LIMITED (JAPAN)
UPPER CASCADES	TNL - 140	TEIJIM LIMITED (JAPAN)
MIDDLE CASCADES	TNL - 80	TEIJIM LIMITED (JAPAN)
MIDDLE CASCADES	TNL - 140	TEIJIM LIMITED (JAPAN)
MAIN	TNL - 220	TEIJIM LIMITED (JAPAN)
MAIN	TNL - 280	TEIJIM LIMITED (JAPAN)
MAIN BREAK	TNL - 280	TEIJIM LIMITED (JAPAN)
THREAD	SERAFIL 60	AMAN (GERMANY)

RISERS	FABRIC CODE	SUPPLIER
MATERIAL	3455	COUSIN (FRANCE)
COLOR INDICATOR	210D	TECNI SANGLES (FRANCE)
THREAD	V138	COATS (ENGLAND)
MAILLONS	3.5	ANSUNG PRECISION (KOREA)

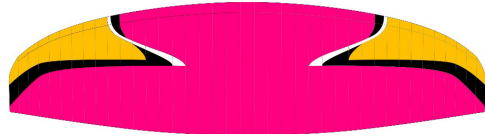


A	A'	B	C
3A1	3A3	3B1	3C1
3A2		3B2	3C2
		3B3	3C3
		stb main	



COLORS TECHNICAL DATA

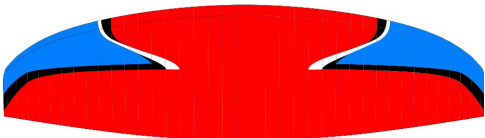
HOLI	SB1	PINK	TOP	REF: 19-2047
	SB2	WHITE	BOTTOM - ALL WHITE	REF: 001
	SB3	GOLD	HORN	REF: 939
	SB4	BLACK	SHADOW	REF: 102
	SB5	WHITE	VOLUME SHADOW	REF: 001



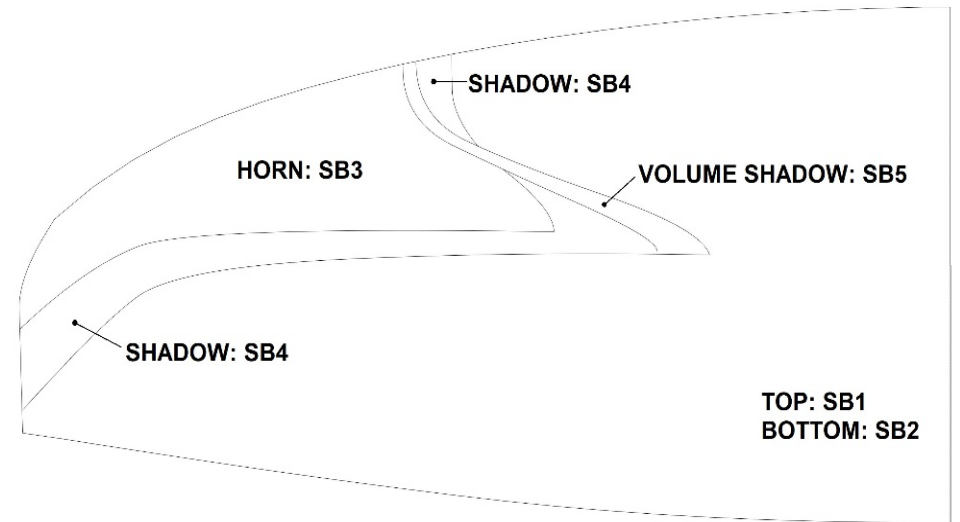
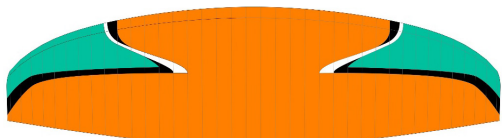
MINT	SB1	SPECTRA GREEN	TOP	REF: 17-5335
	SB2	WHITE	BOTTOM - ALL WHITE	REF: 001
	SB3	LIMA	HORN	REF: 500
	SB4	BLACK	SHADOW	REF: 102
	SB5	WHITE	VOLUME SHADOW	REF: 001



PRIME	SB1	DRAGON RED	TOP	REF: 636
	SB2	WHITE	BOTTOM - ALL WHITE	REF: 001
	SB3	ROYAL BLUE	HORN	REF: 317
	SB4	BLACK	SHADOW	REF: 102
	SB5	WHITE	VOLUME SHADOW	REF: 001



LAVA	SB1	ORANGE	TOP	REF: 744
	SB2	WHITE	BOTTOM - ALL WHITE	REF: 001
	SB3	SPECTRA GREEN	HORN	REF: 17-5335
	SB4	BLACK	SHADOW	REF: 102
	SB5	WHITE	VOLUME SHADOW	REF: 001



WING LOAD TECHNICAL DATA

KOYOT 4

22		24		26		28		31	
P.T.V.	KG/M2	P.T.V.	KG/M2	P.T.V.	KG/M2	P.T.V.	KG/M2	P.T.V.	KG/M2
45	= 2,05	60	= 2,50	75	= 2,88	90	= 3,21	110	= 3,55
50	= 2,27	65	= 2,71	80	= 3,08	95	= 3,39	115	= 3,71
55	= 2,50	70	= 2,92	85	= 3,27	100	= 3,57	120	= 3,87
60	= 2,73	75	= 3,13	90	= 3,46	105	= 3,75	125	= 4,03
65	= 2,95	80	= 3,33	95	= 3,65	110	= 3,93	130	= 4,19
70	= 3,18					115	= 4,11	135	= 4,35
75	= 3,41								

LINES TECHNICAL DATA

KOYOT 4 22

REF.	MAT.	kg	COLOUR	mm	REF.	MAT.	kg	COLOUR	mm	REF.	MAT.	kg	COLOUR	mm	REF.	MAT.	kg	COLOUR	mm	ref.	mat.	kg	COLOUR	mm
a1	TNL	140	GREEN	1348	b1	TNL	140	BLUE	1334	c1	TNL	80	BLUE	955	d1	TNL	80	BLUE	1065	br1	TNL	80	RED	1681
a2	TNL	140	GREEN	1314	b2	TNL	140	BLUE	1299	c2	TNL	80	BLUE	936	d2	TNL	80	BLUE	1048	br2	TNL	80	RED	1359
a3	TNL	140	GREEN	1278	b3	TNL	140	BLUE	1254	c3	TNL	80	BLUE	889	d3	TNL	80	BLUE	996	br3	TNL	80	RED	1236
a4	TNL	140	GREEN	1242	b4	TNL	140	BLUE	1222	c4	TNL	80	BLUE	847	d4	TNL	80	BLUE	946	br4	TNL	80	RED	1472
a5	TNL	80	GREEN	1951	b5	TNL	80	BLUE	1874	c5	TNL	80	BLUE	663	d5	TNL	80	BLUE	768	br5	TNL	80	RED	1308
a6	TNL	80	GREEN	1844	b6	TNL	80	BLUE	1779	c6	TNL	80	BLUE	735	d6	TNL	80	BLUE	827	br6	TNL	80	RED	1319
a7	TNL	80	GREEN	1779	b7	TNL	80	BLUE	1735	c7	TNL	80	BLUE	494	d7	TNL	80	BLUE	565	br7	TNL	80	RED	510
a8	TNL	80	RED	924	b8	TNL	80	RED	877	c9	TNL	80	RED	1670						br8	TNL	80	RED	374
a9	TNL	80	RED	1577	b9	TNL	80	RED	1605										br9	TNL	80	RED	559	
																			br10	TNL	80	RED	470	
					2ST1	TNL	80	RED	885	2C1	TNL	140	BLUE	210					2BR1	TNL	80	RED	2.226	
					STB MAIN	TNL	80	RED	3.558	2C2	TNL	140	BLUE	199					2BR2	TNL	80	RED	1.843	
										2C3	TNL	140	BLUE	209					2BR3	TNL	80	RED	620	
										2C4	TNL	140	BLUE	225					2BR4	TNL	80	RED	296	
										2C5	TNL	80	BLUE	943					3BR1	TNL	80	RED	2.089	
										2C6	TNL	80	BLUE	764										
										2C7	TNL	80	RED	980										
3A1	TNL	280	GREEN	4529	3B1	TNL	280	BLUE	4.446	3C1	TNL	280	BLUE	4674										
3A2	TNL	280	GREEN	4525	3B2	TNL	280	BLUE	4.459	3C2	TNL	280	BLUE	4685					BRMAIN	TNL	280	RED	3082	
3A3	TNL	220	GREEN	3753	3B3	TNL	220	BLUE	3.765	3C3	TNL	220	BLUE	4130									KNOT POINT	2882

LINES TECHNICAL DATA

KOYOT 4 **24**

REF.	MAT.	kg	COLOUR	mm	REF.	MAT.	kg	COLOUR	mm	REF.	MAT.	kg	COLOUR	mm	REF.	MAT.	kg	COLOUR	mm	ref.	mat.	kg	COLOUR	mm
a1	TNL	140	GREEN	1407	b1	TNL	140	BLUE	1392	c1	TNL	80	BLUE	997	d1	TNL	80	BLUE	1113	br1	TNL	80	RED	1756
a2	TNL	140	GREEN	1374	b2	TNL	140	BLUE	1358	c2	TNL	80	BLUE	978	d2	TNL	80	BLUE	1094	br2	TNL	80	RED	1420
a3	TNL	140	GREEN	1335	b3	TNL	140	BLUE	1309	c3	TNL	80	BLUE	929	d3	TNL	80	BLUE	1040	br3	TNL	80	RED	1292
a4	TNL	140	GREEN	1298	b4	TNL	140	BLUE	1277	c4	TNL	80	BLUE	884	d4	TNL	80	BLUE	988	br4	TNL	80	RED	1536
a5	TNL	80	GREEN	2038	b5	TNL	80	BLUE	1958	c5	TNL	80	BLUE	692	d5	TNL	80	BLUE	802	br5	TNL	80	RED	1366
a6	TNL	80	GREEN	1927	b6	TNL	80	BLUE	1859	c6	TNL	80	BLUE	768	d6	TNL	80	BLUE	864	br6	TNL	80	RED	1379
a7	TNL	80	GREEN	1859	b7	TNL	80	BLUE	1813	c7	TNL	80	BLUE	516	d7	TNL	80	BLUE	590	br7	TNL	80	RED	533
a8	TNL	80	RED	965	b8	TNL	80	RED	916	c9	TNL	80	RED	1744						br8	TNL	80	RED	391
a9	TNL	80	RED	1647	b9	TNL	80	RED	1676											br9	TNL	80	RED	583
																				br10	TNL	80	RED	491
					2ST1	TNL	80	RED	924	2C1	TNL	140	BLUE	219						2BR1	TNL	80	RED	2.322
					STB MAIN	TNL	80	RED	3.745	2C2	TNL	140	BLUE	208						2BR2	TNL	80	RED	1.925
										2C3	TNL	140	BLUE	217						2BR3	TNL	80	RED	647
										2C4	TNL	140	BLUE	235						2BR4	TNL	80	RED	310
										2C5	TNL	80	BLUE	985						3BR1	TNL	80	RED	2.186
										2C6	TNL	80	BLUE	798										
										2C7	TNL	80	RED	1024										
3A1	TNL	280	GREEN	4752	3B1	TNL	280	BLUE	4.663	3C1	TNL	280	BLUE	4903										
3A2	TNL	280	GREEN	4751	3B2	TNL	280	BLUE	4.682	3C2	TNL	280	BLUE	4919						BR- MAIN	TNL	280	RED	3233
3A3	TNL	220	GREEN	3947	3B3	TNL	220	BLUE	3.960	3C3	TNL	220	BLUE	4340										KNOT POINT 3033

LINES TECHNICAL DATA

KOYOT 4

26

REF.	MAT.	KG	COLOUR	MM	REF.	MAT.	KG	COLOUR	MM	REF.	MAT.	KG	COLOUR	MM	REF.	MAT.	KG	COLOUR	MM	REF.	MAT.	KG	COLOUR	MM
a1	TNL	140	GREEN	1464	b1	TNL	140	BLUE	1448	c1	TNL	80	BLUE	1038	d1	TNL	80	BLUE	1158	br1	TNL	80	RED	1827
a2	TNL	140	GREEN	1431	b2	TNL	140	BLUE	1414	c2	TNL	80	BLUE	1018	d2	TNL	80	BLUE	1139	br2	TNL	80	RED	1479
a3	TNL	140	GREEN	1389	b3	TNL	140	BLUE	1362	c3	TNL	80	BLUE	967	d3	TNL	80	BLUE	1083	br3	TNL	80	RED	1346
a4	TNL	140	GREEN	1352	b4	TNL	140	BLUE	1330	c4	TNL	80	BLUE	921	d4	TNL	80	BLUE	1028	br4	TNL	80	RED	1598
a5	TNL	80	GREEN	2121	b5	TNL	80	BLUE	2037	c5	TNL	80	BLUE	721	d5	TNL	80	BLUE	834	br5	TNL	80	RED	1422
a6	TNL	80	GREEN	2006	b6	TNL	80	BLUE	1935	c6	TNL	80	BLUE	799	d6	TNL	80	BLUE	899	br6	TNL	80	RED	1436
a7	TNL	80	GREEN	1936	b7	TNL	80	BLUE	1888	c7	TNL	80	BLUE	537	d7	TNL	80	BLUE	614	br7	TNL	80	RED	555
a8	TNL	80	RED	1004	b8	TNL	80	RED	953	c9	TNL	80	RED	1815						br8	TNL	80	RED	407
a9	TNL	80	RED	1715	b9	TNL	80	RED	1745											br9	TNL	80	RED	607
																				br10	TNL	80	RED	511
					2ST1	TNL	80	RED	962	2C1	TNL	140	BLUE	227						2BR1	TNL	80	RED	2.413
					STB MAIN	TNL	80	RED	3.925	2C2	TNL	140	BLUE	218						2BR2	TNL	80	RED	2.004
										2C3	TNL	140	BLUE	226						2BR3	TNL	80	RED	672
										2C4	TNL	140	BLUE	245						2BR4	TNL	80	RED	323
										2C5	TNL	80	BLUE	1025						3BR1	TNL	80	RED	2.278
										2C6	TNL	80	BLUE	831										
										2C7	TNL	80	RED	1066										
3A1	TNL	280	GREEN	4967	3B1	TNL	280	BLUE	4.873	3C1	TNL	280	BLUE	5124										
3A2	TNL	280	GREEN	4969	3B2	TNL	280	BLUE	4.896	3C2	TNL	280	BLUE	5143						BRMAIN	TNL	280	RED	3377
3A3	TNL	220	GREEN	4134	3B3	TNL	220	BLUE	4.148	3C3	TNL	220	BLUE	4543										KNOT POINT 3177

LINES TECHNICAL DATA

KOYOT 4

28

REF.	MAT.	kg	COLOUR	mm	REF.	MAT.	kg	COLOUR	mm	REF.	MAT.	kg	COLOUR	mm	REF.	MAT.	kg	COLOUR	mm	ref.	mat.	kg	COLOUR	mm
a1	TNL	140	GREEN	1519	b1	TNL	140	BLUE	1503	c1	TNL	80	BLUE	1077	d1	TNL	80	BLUE	1202	br1	TNL	80	RED	1895
a2	TNL	140	GREEN	1486	b2	TNL	140	BLUE	1469	c2	TNL	80	BLUE	1057	d2	TNL	80	BLUE	1182	br2	TNL	80	RED	1535
a3	TNL	140	GREEN	1441	b3	TNL	140	BLUE	1413	c3	TNL	80	BLUE	1003	d3	TNL	80	BLUE	1124	br3	TNL	80	RED	1398
a4	TNL	140	GREEN	1404	b4	TNL	140	BLUE	1381	c4	TNL	80	BLUE	955	d4	TNL	80	BLUE	1067	br4	TNL	80	RED	1658
a5	TNL	80	GREEN	2201	b5	TNL	80	BLUE	2114	c5	TNL	80	BLUE	748	d5	TNL	80	BLUE	866	br5	TNL	80	RED	1476
a6	TNL	80	GREEN	2082	b6	TNL	80	BLUE	2008	c6	TNL	80	BLUE	829	d6	TNL	80	BLUE	933	br6	TNL	80	RED	1492
a7	TNL	80	GREEN	2010	b7	TNL	80	BLUE	1960	c7	TNL	80	BLUE	557	d7	TNL	80	BLUE	638	br7	TNL	80	RED	575
a8	TNL	80	RED	1042	b8	TNL	80	RED	989	c9	TNL	80	RED	1883						br8	TNL	80	RED	423
a9	TNL	80	RED	1779	b9	TNL	80	RED	1810										br9	TNL	80	RED	629	
																			BR10	TNL	80	RED	530	
					2ST1	TNL	80	RED	998	2C1	TNL	140	BLUE	235					2BR1	TNL	80	RED	2.502	
					STB MAIN	TNL	80	RED	4.098	2C2	TNL	140	BLUE	227					2BR2	TNL	80	RED	2.080	
										2C3	TNL	140	BLUE	234					2BR3	TNL	80	RED	697	
										2C4	TNL	140	BLUE	255					2BR4	TNL	80	RED	336	
										2C5	TNL	80	BLUE	1063					3BR1	TNL	80	RED	2.367	
										2C6	TNL	80	BLUE	863										
										2C7	TNL	80	RED	1107										
3A1	TNL	280	GREEN	5173	3B1	TNL	280	BLUE	5.074	3C1	TNL	280	BLUE	5336										
3A2	TNL	280	GREEN	5178	3B2	TNL	280	BLUE	5.103	3C2	TNL	280	BLUE	5359					BRMAIN	TNL	280	RED	3516	
3A3	TNL	220	GREEN	4314	3B3	TNL	220	BLUE	4.328	3C3	TNL	220	BLUE	4739										KNOT POINT 3316

LINES TECHNICAL DATA

KOYOT 4

31

REF.	MAT.	KG	COLOUR	MM	REF.	MAT.	KG	COLOUR	MM	REF.	MAT.	KG	COLOUR	MM	REF.	MAT.	KG	COLOUR	MM	REF.	MAT.	KG	COLOUR	MM	
a1	TNL	140	GREEN	1597	b1	TNL	140	BLUE	1580	c1	TNL	80	BLUE	1133	d1	TNL	80	BLUE	1265	br1	TNL	80	RED	1994	
a2	TNL	140	GREEN	1565	b2	TNL	140	BLUE	1547	c2	TNL	80	BLUE	1112	d2	TNL	80	BLUE	1244	br2	TNL	80	RED	1615	
a3	TNL	140	GREEN	1516	b3	TNL	140	BLUE	1487	c3	TNL	80	BLUE	1056	d3	TNL	80	BLUE	1182	br3	TNL	80	RED	1473	
a4	TNL	140	GREEN	1478	b4	TNL	140	BLUE	1454	c4	TNL	80	BLUE	1005	d4	TNL	80	BLUE	1123	br4	TNL	80	RED	1744	
a5	TNL	80	GREEN	2316	b5	TNL	80	BLUE	2224	c5	TNL	80	BLUE	787	d5	TNL	80	BLUE	911	br5	TNL	80	RED	1554	
a6	TNL	80	GREEN	2191	b6	TNL	80	BLUE	2114	c6	TNL	80	BLUE	873	d6	TNL	80	BLUE	982	br6	TNL	80	RED	1571	
a7	TNL	80	GREEN	2116	b7	TNL	80	BLUE	2063	c7	TNL	80	BLUE	586	d7	TNL	80	BLUE	671	br7	TNL	80	RED	605	
a8	TNL	80	RED	1096	b8	TNL	80	RED	1041	c9	TNL	80	RED	1982						br8	TNL	80	RED	446	
a9	TNL	80	RED	1872	b9	TNL	80	RED	1905											br9	TNL	80	RED	662	
																				br10	TNL	80	RED	558	
					2ST1	TNL	80	RED	1.050	2C1	TNL	140	BLUE	246						2BR1	TNL	80	RED	2.628	
					STB MAIN	TNL	80	RED	4.347	2C2	TNL	140	BLUE	240						2BR2	TNL	80	RED	2.188	
										2C3	TNL	140	BLUE	246						2BR3	TNL	80	RED	733	
										2C4	TNL	140	BLUE	269						2BR4	TNL	80	RED	355	
										2C5	TNL	80	BLUE	1118						3BR1	TNL	80	RED	2.495	
										2C6	TNL	80	BLUE	908											
										2C7	TNL	80	RED	1165											
3A1	TNL	280	GREEN	5468	3B1	TNL	280	BLUE	5.364	3C1	TNL	280	BLUE	5640											
3A2	TNL	280	GREEN	5478	3B2	TNL	280	BLUE	5.398	3C2	TNL	280	BLUE	5669						BRMAIN	TNL	280	RED	3715	
3A3	TNL	220	GREEN	4571	3B3	TNL	220	BLUE	4.587	3C3	TNL	220	BLUE	5018										KNOT POINT	3515

NIVIUK KOYOT 4 22

LINES HEIGHT mm

	A	B	C	D	BR
1	5873	5776	5825	5935	6769
2	5839	5741	5795	5907	6447
3	5799	5709	5769	5876	6324
4	5763	5677	5743	5842	6177
5	5702	5637	5724	5825	6013
6	5595	5542	5617	5705	6024
7	5530	5498	5592	5659	6071
8	5358	5311	5224		5935
9	5131	5159			5796
10					5707

RISERS LENGHT mm

	A	A'	B	C	
	470	470	470	470	STANDARD
	340	340	383	470	ACCELERATED

NIVIUK KOYOT 4 24

LINES HEIGHT mm

	A	B	C	D	BR
1	6155	6051	6105	6221	7091
2	6122	6017	6075	6191	6755
3	6082	5987	6051	6162	6627
4	6045	5955	6024	6128	6474
5	5983	5916	6005	6111	6304
6	5872	5817	5894	5986	6317
7	5804	5771	5868	5938	6369
8	5625	5576	5485		6227
9	5388	5417			6082
10					5990

RISERS LENGHT mm

	A	A'	B	C	
	470	470	470	470	STANDARD
	340	340	383	470	ACCELERATED

NIVIUK KOYOT 4 26

LINES HEIGHT mm

	A	B	C	D	BR
1	6427	6317	6375	6495	7397
2	6394	6283	6346	6467	7049
3	6354	6254	6322	6438	6916
4	6317	6222	6295	6402	6759
5	6253	6183	6277	6386	6583
6	6138	6081	6161	6257	6597
7	6068	6034	6134	6207	6652
8	5882	5831	5736		6504
9	5636	5666			6355
10					6259

RISERS LENGHT mm

	A	A'	B	C	
	470	470	470	470	STANDARD
	340	340	383	470	ACCELERATED

NIVIUK KOYOT 4 28

LINES HEIGHT mm

	A	B	C	D	BR
1	6688	6573	6634	6759	7693
2	6655	6539	6606	6731	7333
3	6615	6512	6582	6703	7196
4	6578	6480	6555	6667	7034
5	6513	6440	6538	6657	6852
6	6394	6334	6419	6524	6868
7	6322	6286	6391	6473	6925
8	6129	6076	5977		6773
9	5873	5904			6618
10					6519

RISERS LENGHT mm

	A	A'	B	C	
	470	470	470	470	STANDARD
	340	340	383	470	ACCELERATED

LINES HEIGHT mm

	A	B	C	D	BR
1	7061	6940	7005	7137	8117
2	7029	6907	6978	7110	7738
3	6990	6881	6957	7083	7596
4	6952	6848	6929	7047	7427
5	6891	6809	6911	7031	7237
6	6766	6699	6787	6892	7254
7	6685	6648	6757	6838	7318
8	6478	6429	6325		7159
9	6209	6248			6997
10					6893

RISERS LENGHT mm

	A	A'	B	C	
	470	470	470	470	STANDARD
	340	340	383	470	ACCELERATED

SUSPENSION TECHNICAL DATA

KOYOT 4

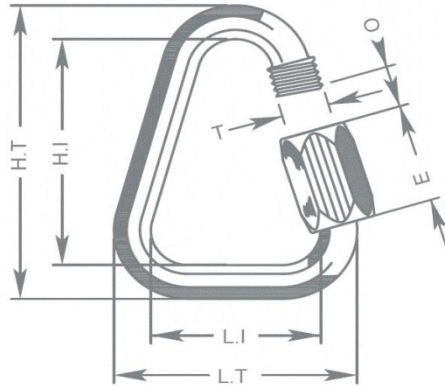
MATERIAL CODE		TNL	TNL	TNL	TNL
STRENGTH CODE		080	140	220	280
DIAMETER mm	Ø	1,1	1,4	1,6	1,8
CORE MATERIAL		TECHNORA	TECHNORA	TECHNORA	TECHNORA
SLEEVE MATERIAL		POLYESTER	POLYESTER	POLYESTER	POLYESTER
WEIGHT G/M	TOTAL	1,1	1,2	1,6	2,7
BREAKING STRENGTH	MINIMUM	80	140	220	280
	MAXIMUM	92	160	250	320
STRENGTH AFTER					
5.000 BENDING	TEST EN	36,7	76,1	114,2	134,7
CYCLES					
ELONGATION AT	5 DAN EN %	0,3	0,2	0,2	0,2
	10 DAN EN %	0,5	0,3	0,3	0,3
	15 DAN EN %	0,7	0,5	0,5	0,4
	20 DAN EN %	1	0,6	0,6	0,4
	25 DAN EN %	1,3	0,8	0,7	0,5
	30 DAN EN %	2,3	1,5	1,2	0,9
	75 DAN EN %	2,8	2,3	1,8	1,3
	100 DAN EN %		2,7	2,2	1,7
	125 DAN EN %		3,2	2,7	2
	150 DAN EN %			3	2,3
	175 DAN EN %			3,3	2,7
	200 DAN EN %			3,8	2,8
ELONGATION MAX. BREAKING STRENGTH %		3	3,4	4	4,1

MAILLON TECHNICAL DATA

DESCRIPTION

MAILLON	DELTA
CODE	MRI4
MATERIAL	STAINLESS STEEL
SIZE	4,3 m/m
WEIGHT	12 G/PIECE
QUANTITY	8 PIECES
INSERTS	4 GREEN / 4 BLACK

TECHNICAL SPECIFICATIONS



DIMENSIONS	mm
L.T.	28
L.I.	20
H.T.	38
H.I.	30
O	4
E	11
T	4
LOAD	KG
WORKING LIMIT	150
BREAKING	750

MATERIAL

AISI 304 STAINLESS STEEL STANDARD

CLOSING APPLIED BY MANUAL & ENTIRE SCREWING OF THE NUT
 TO GUARANTEE THE HIGHEST SAFETY (NO THREAD SHOULD BE OBVIOUS)

SYSTEMATIC CONTROL OF MAILLON QUICK-LINKS BEFORE EVERY FLIGHT

THREAD TECHNICAL DATA**SAIL MAKING**

NAME	SERAFIL
N° OF REFERENCE	60
MATERIAL	POLYESTER
TYPE OF FINISH	SILK
LINEAR DENSITY	NM 61 / 3 (DTEX 163 * 3)
BREAKING STRENGTH	3,000 CN
ELONGATION	17,00%

SERAFIL PROPERTIES

SOLIDITY ARTIFICIAL LIGTH	ISO 105 B02 > 5 - 6
SOLIDITY SWEAT	ISO 105 E04 > 4
SOLIDITY WASHING	ISO 105 C04 > 3
SOLIDITY GRAZE IN DRY	ISO 105 X12 > 4
SOLIDITY WASHING IN DRY	ISO 105 D01 > 3 - 4

TREATMENT WATER REPELLENT	WR
---------------------------	----

RISERS MAKING

NAME	COATS BONDED C.F.P.
N° OF REFERENCE	V138
MATERIAL	POLYESTER
TYPE OF FINISH	SILK
BREAKING STRENGTH	9,5 KG
ELONGATION	19%

RISERS TECHNICAL DATA**RISERS**

N° OF REFERENCE	WD103
MATERIAL	POLYESTER & TECHNORA
WIDTH	19 M/M
THICKNESS	1,6 M/M
BREAKING STRENGTH	850 KG
ELONGATION	MAX. 12%
WEIGHT	23 G/M
COLOR	BLACK

COLOR INDICATOR

N° OF REFERENCE	IC-G 1-2
MATERIAL	POLYESTER
WIDTH	70 Mm
THICKNESS	0,80 Mm
BREAKING STRENGTH	130 DN
ELONGATION	35 %
WEIGHT	32 G * L.M.
COLOR	GREEN

LOOPS

N° OF REFERENCE	LKI - 10
MATERIAL	NYLON
WIDTH	10 Mm
BREAKING STRENGTH	84 KG
ELONGATION	30 %
WEIGHT	5,5 G/M
COLOR	WHITE

