

KODE P

Technical *specifications*



TECHNICAL SPECIFICATIONS

			12	14	16	18	20	22	24	26
Cells	Number		34	34	34	34	34	34	34	34
Aspect ratio	Flat		4,75	4,75	4,75	4,75	4,75	4,75	4,75	4,75
	Projected		3,83	3,83	3,83	3,83	3,83	3,83	3,83	3,83
Area	Flat	m ²	12,5	14	16	18	20	22	24	26,5
	Projected	m ²	11,21	12,56	14,35	16,05	17,61	19,37	21,13	23,33
Span	Flat	m	7,71	8,16	8,72	9,25	9,75	10,22	10,68	11,22
Chord	Max	m	2	2,11	2,26	2,39	2,52	2,65	2,76	2,9
Lines	Total	m	190	202	218	231	243	255	267	281
	Main		3/3/2	3/3/2	3/3/2	3/3/2	2+1/3/2	2+1/3/2	2+1/3/2	2+1/3/2
Risers	Number	3+1	A/B/C	A/B/C	A/B/C	A/B/C	A+A'/B/C	A+A'/B/C	A+A'/B/C	A+A'/B/C
	Speed-bar	mm	100	100	100	100	160	160	160	160
Glider weight		kg	1,55	1,65	1,8	1,95	2,24	2,41	2,6	2,8
Glider volume		L	9	9,5	10	10,5	11	11,5	12	12,5
Certification	Max 110 kg		EN 926-1	EN 926-1	-	-	-	-	-	-
Total weight in flight EN/LTF A	Min-Max	kg	-	-	-	50-70	60-85	65-90	70-95	90-115
Total weight in flight EN/LTF B	Min-Max	kg	-	-	45-70	70-80	-	-	-	-
Total weight in flight EN/LTF C	Min-Max	kg	-	-	70-90	80-100	-	-	-	-

The total weight of the wing may differ ±2% due to variations in the weight of the fabric supplied by the manufacturers.

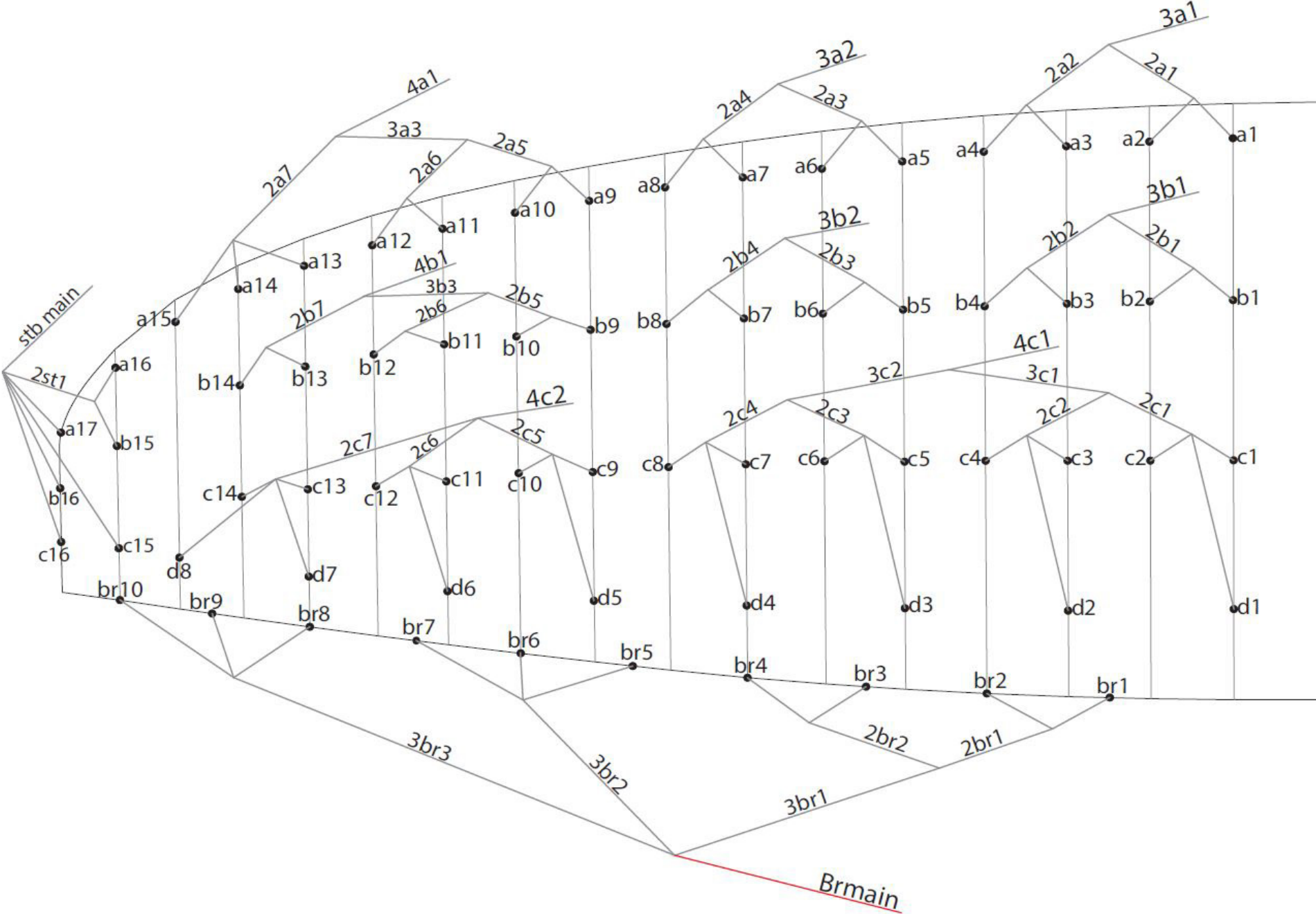
MATERIALS

CANOPY	FABRIC CODE	SUPPLIER
UPPER SURFACE	D20 / N10	DOMINICO TEX CO (KOREA)
BOTTOM SURFACE	N10	DOMINICO TEX CO (KOREA)
PROFILES	70000 E91	PORCHER IND (FRANCE)
	2044 FM	DOMINICO TEX CO (KOREA)
DIAGONALS	70000 E91	PORCHER IND (FRANCE)
TENSION BANDS	2044 32 FM	DOMINICO TEX CO (KOREA)
LOOPS	LKI - 12	KOLON IND. (KOREA)
REINFORCEMENT LOOPS	30D ST	DOMINICO TEX CO (KOREA)
TRAILING EDGE REINFORCEMENT	MYLAR	D-P (GERMANY)
RIBS REINFORCEMENT	LTN-0.5/0.8 STICK	SPORTWARE CO.CHINA
THREAD	SERAFIL 60	AMAN (GERMANY)

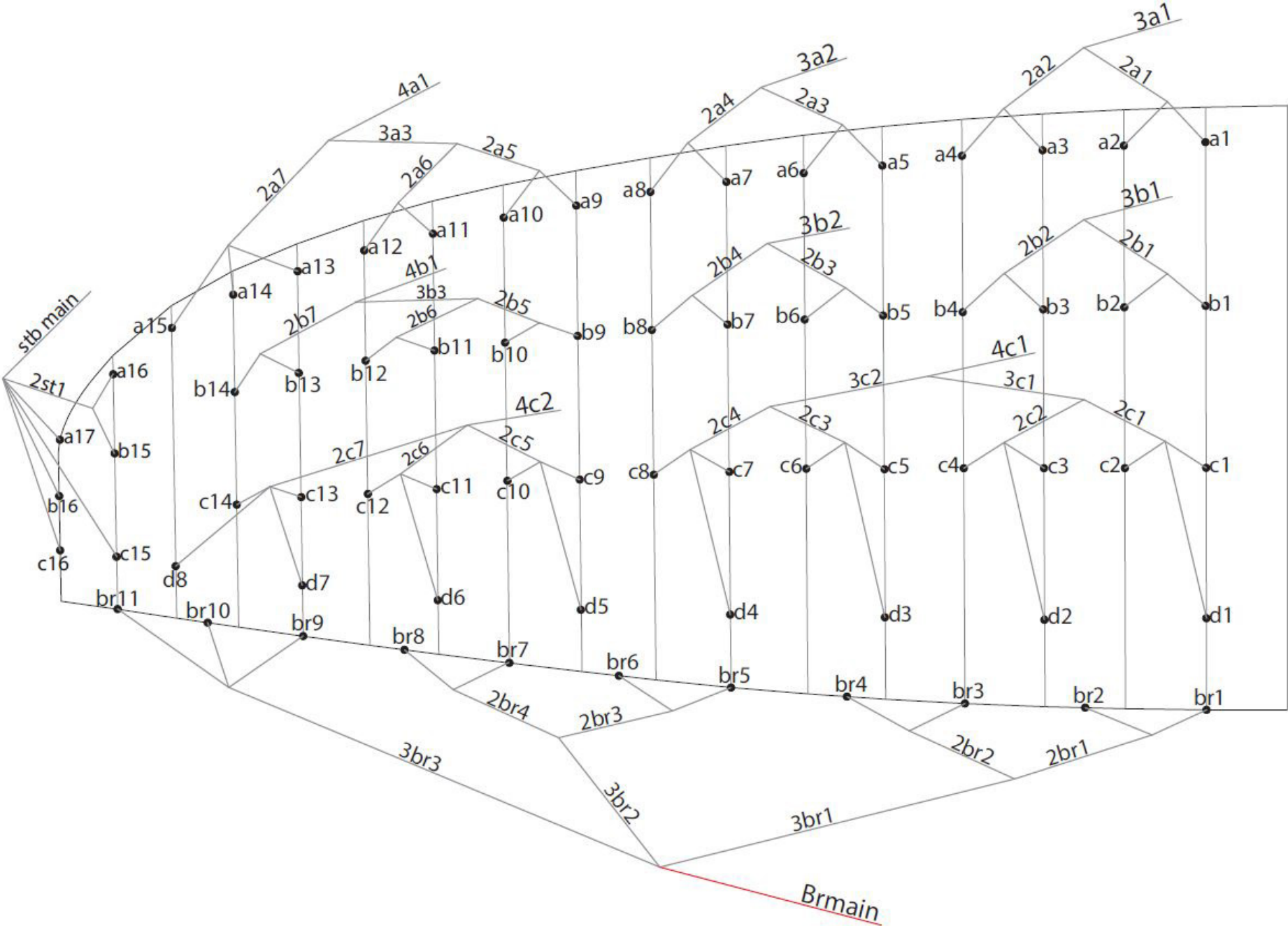
SUSPENSION LINES	FABRIC CODE	SUPPLIER
UPPER CASCADES	DC - 60	LIROS GMHB (GERMANY)
UPPER CASCADES	A-8001/U 50	EDELRID (GERMANY)
UPPER CASCADES	A-8001/U 70	EDELRID (GERMANY)
MIDDLE CASCADES	A-8001/U 70	EDELRID (GERMANY)
MIDDLE CASCADES	A-8001/U 90	EDELRID (GERMANY)
MIDDLE CASCADES	A-8001/U 130	EDELRID (GERMANY)
MAIN	A-8001/U 130	EDELRID (GERMANY)
MAIN	A-8001/U 190	EDELRID (GERMANY)
MAIN	A-8001/U 230	EDELRID (GERMANY)
MAIN BREAK	TARAX-200	EDELRID (GERMANY)

RISERS	FABRIC CODE	SUPPLIER
MATERIAL	3455 / CSAR7	COUSIN (FRANCE)
COLOR INDICATOR	210D	TECNI SANGLES (FRANCE)
THREAD	V138	COATS (ENGLAND)
PULLEYS	RF25109	RONSTAN (AUSTRALIA)

SUSPENSION PLAN (SIZE 12 - 14)



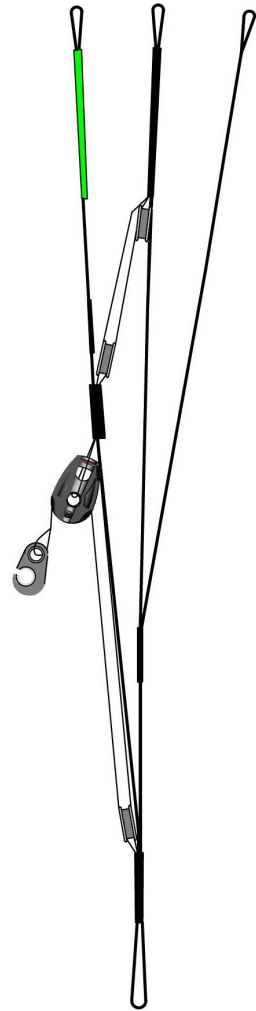
SUSPENSION PLAN (SIZE 16 - 26)



RISER PLAN

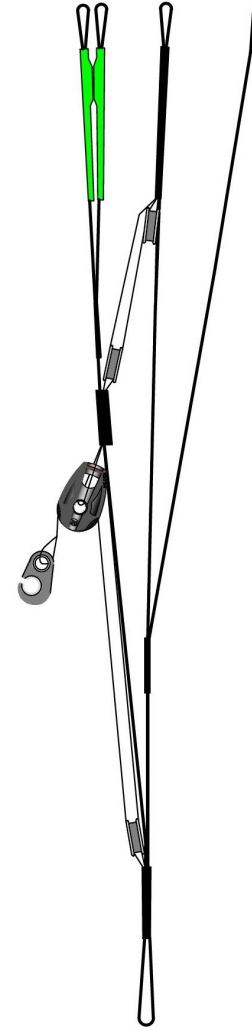
SIZE 12-14-16-18

A	B	C
3a1	3b1	4c1
3a2	3b2	4c2
4a1	4b1	
stb main		

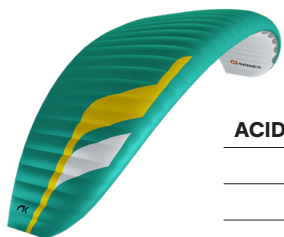


SIZE 20-22-24-26

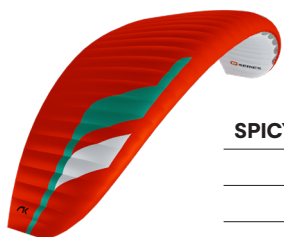
A	A'	B	C
3a1	4a1	3b1	4c1
3a2		3b2	4c2
		4b1	
stb main			



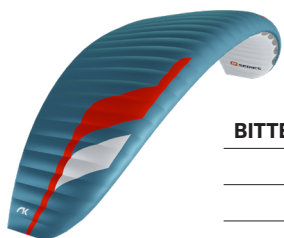
COLORS



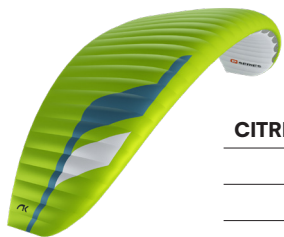
ACID	SB1	SPECTRA GREEN	TOP	REF: 5335
	SB2	WHITE	BOTTOM - ALL WHITE	REF: 001
	SB3	WHITE	HORN	REF: 001
	SB4	GOLD	SHADOW	REF: 939



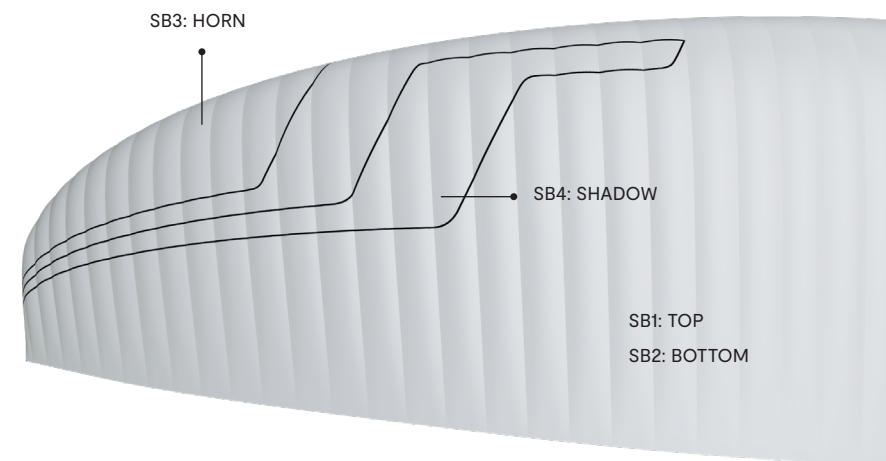
SPICY	SB1	DRAGON RED	TOP	REF: 636
	SB2	WHITE	BOTTOM - ALL WHITE	REF: 001
	SB3	WHITE	HORN	REF: 001
	SB4	SPECTRA GREEN	SHADOW	REF: 5335



BITTER	SB1	SLATE BLUE	TOP	REF: 317
	SB2	WHITE	BOTTOM - ALL WHITE	REF: 001
	SB3	WHITE	HORN	REF: 001
	SB4	DRAGON RED	SHADOW	REF: 636



CITRIK	SB1	LIMA	TOP	REF: 500
	SB2	WHITE	BOTTOM - ALL WHITE	REF: 001
	SB3	WHITE	HORN	REF: 001
	SB4	SLATE BLUE	SHADOW	REF: 317



WING LOAD

KODE P

12		14		16		18		20		22		24		26	
P.T.V.	KG/M2	P.T.V.	KG/M2	P.T.V.	KG/M2	P.T.V.	KG/M2	P.T.V.	KG/M2	P.T.V.	KG/M2	P.T.V.	KG/M2	P.T.V.	KG/M2
45	= 3,60	45	= 3,21	45	= 2,81	50	= 2,78	60	= 3,00	65	= 2,95	70	= 2,92	90	= 3,40
50	= 4,00	50	= 3,57	50	= 3,13	55	= 3,06	65	= 3,25	70	= 3,18	75	= 3,13	95	= 3,58
55	= 4,40	55	= 3,93	55	= 3,44	60	= 3,33	70	= 3,50	75	= 3,41	80	= 3,33	100	= 3,77
60	= 4,80	60	= 4,29	60	= 3,75	65	= 3,61	75	= 3,75	80	= 3,64	85	= 3,54	105	= 3,96
65	= 5,20	65	= 4,64	65	= 4,06	70	= 3,89	80	= 4,00	85	= 3,86	90	= 3,75	110	= 4,15
70	= 5,60	70	= 5,00	70	= 4,38	75	= 4,17	85	= 4,25	90	= 4,09	95	= 3,96	115	= 4,34
75	= 6,00	75	= 5,36	75	= 4,69	80	= 4,44								
80	= 6,40	80	= 5,71	80	= 5,00	85	= 4,72								
85	= 6,80	85	= 6,07	85	= 5,31	90	= 5,00								
90	= 7,20	90	= 6,43	90	= 5,63	95	= 5,28								
						100	= 5,56								

LINES

KODE P 12

REF.	MAT.	kg	COLOR	mm	REF.	MAT.	kg	COLOR	mm	REF.	MAT.	kg	COLOR	mm	REF.	MAT.	kg	COLOR	mm	REF.	MAT.	kg	COLOR	mm		
A					B					C					D					BRAKE						
a1	A/8001U	70	ORANGE	664	b1	A/8001U	70	BLUE	657	c1	A/8001U	50	BLUE	633	d1	A/8001U	50	BLUE	727	br1	DC	60	WHT	563		
a2	A/8001U	70	ORANGE	609	b2	A/8001U	70	BLUE	604	c2	A/8001U	50	BLUE	542	d2	A/8001U	50	BLUE	728	br2	DC	60	WHT	375		
a3	A/8001U	70	ORANGE	609	b3	A/8001U	70	BLUE	604	c3	A/8001U	50	BLUE	625	d3	A/8001U	50	BLUE	709	br3	DC	60	WHT	504		
a4	A/8001U	70	ORANGE	640	b4	A/8001U	70	BLUE	636	c4	A/8001U	50	BLUE	651	d4	A/8001U	50	BLUE	656	br4	DC	60	WHT	512		
a5	A/8001U	70	ORANGE	619	b5	A/8001U	70	BLUE	606	c5	A/8001U	50	BLUE	610	d5	A/8001U	50	BLUE	673	br5	DC	60	WHT	990		
a6	A/8001U	70	ORANGE	582	b6	A/8001U	70	BLUE	571	c6	A/8001U	50	BLUE	611	d6	A/8001U	50	BLUE	607	br6	DC	60	WHT	949		
a7	A/8001U	70	ORANGE	582	b7	A/8001U	70	BLUE	572	c7	A/8001U	50	BLUE	558	d7	A/8001U	50	BLUE	796	br7	DC	60	WHT	981		
a8	A/8001U	70	ORANGE	609	b8	A/8001U	70	BLUE	602	c8	A/8001U	50	BLUE	650	d8	A/8001U	50	BLUE	774	br8	DC	60	WHT	793		
a9	A/8001U	70	ORANGE	528	b9	A/8001U	50	BLUE	517	c9	A/8001U	50	BLUE	573							br9	DC	60	WHT	758	
a10	A/8001U	70	ORANGE	462	b10	A/8001U	50	BLUE	458	c10	A/8001U	50	BLUE	536							br10	DC	60	WHT	796	
a11	A/8001U	70	ORANGE	505	b11	A/8001U	50	BLUE	487	c11	A/8001U	50	BLUE	521												
a12	A/8001U	70	ORANGE	490	b12	A/8001U	50	BLUE	478	c12	A/8001U	50	BLUE	502												
a13	A/8001U	70	ORANGE	1000	b13	A/8001U	50	BLUE	476	c13	A/8001U	50	BLUE	730												
a14	A/8001U	70	ORANGE	959	b14	A/8001U	50	BLUE	470	c14	A/8001U	50	BLUE	718												
a15	A/8001U	70	ORANGE	962	b15	A/8001U	50	BLUE	417	c15	A/8001U	50	BLUE	899												
a16	A/8001U	50	BLUE	446	b16	A/8001U	50	BLUE	879	c16	A/8001U	50	BLUE	933												
a17	A/8001U	50	BLUE	859																						
2a1	A/8001U	130	ORANGE	623	2b1	A/8001U	130	BLUE	617	2c1	A/8001U	70	BLUE	370							2br1	A/8001U	70	BLUE	714	
2a2	A/8001U	130	ORANGE	612	2b2	A/8001U	130	BLUE	607	2c2	A/8001U	70	BLUE	242								2br2	A/8001U	70	BLUE	493
2a3	A/8001U	130	ORANGE	588	2b3	A/8001U	130	BLUE	576	2c3	A/8001U	70	BLUE	224								3br1	A/8001U	70	BLUE	1161
2a4	A/8001U	130	ORANGE	584	2b4	A/8001U	130	BLUE	575	2c4	A/8001U	70	BLUE	325								3br2	A/8001U	70	BLUE	1085
2a5	A/8001U	130	ORANGE	656	2b5	A/8001U	90	BLUE	649	2c5	A/8001U	90	BLUE	1235								3br3	A/8001U	70	BLUE	1292
2a6	A/8001U	90	ORANGE	574	2b6	A/8001U	90	BLUE	586	2c6	A/8001U	90	BLUE	1207												
2a7	A/8001U	130	ORANGE	1092	2b7	A/8001U	90	BLUE	1267	2c7	A/8001U	90	BLUE	955												
3a3	A/8001U	130	ORANGE	1076	3b3	A/8001U	130	BLUE	712	3c1	A/8001U	130	BLUE	920												
					2st1	A/8001U	70	BLUE	416	3c2	A/8001U	130	BLUE	968												
					STB MAIN	A/8001U	70	BLUE	3209																	
3a1	A/8001U	230	ORANGE	3067	3b1	A/8001U	190	BLUE	3.005	4c1	A/8001U	190	BLUE	2482												
3a2	A/8001U	230	ORANGE	3108	3b2	A/8001U	190	BLUE	3.065	4c2	A/8001U	130	BLUE	2496								BRMAIN	TARAX	200	RED	2.676
4a1	A/8001U	190	ORANGE	2063	4b1	A/8001U	130	BLUE	2.383													KNOT POINT:			2.476	

LINES

KODE P 14

REF.	MAT.	kg	COLOR	mm	REF.	MAT.	kg	COLOR	mm	REF.	MAT.	kg	COLOR	mm	REF.	MAT.	kg	COLOR	mm	REF.	MAT.	kg	COLOR	mm
A					B					C					D					BRAKE				
a1	A/8001U	70	ORANGE	701	b1	A/8001U	70	BLUE	693	c1	A/8001U	50	BLUE	670	d1	A/8001U	50	BLUE	770	br1	DC	60	WHT	595
a2	A/8001U	70	ORANGE	645	b2	A/8001U	70	BLUE	639	c2	A/8001U	50	BLUE	575	d2	A/8001U	50	BLUE	770	br2	DC	60	WHT	398
a3	A/8001U	70	ORANGE	645	b3	A/8001U	70	BLUE	639	c3	A/8001U	50	BLUE	661	d3	A/8001U	50	BLUE	750	br3	DC	60	WHT	532
a4	A/8001U	70	ORANGE	678	b4	A/8001U	70	BLUE	675	c4	A/8001U	50	BLUE	690	d4	A/8001U	50	BLUE	694	br4	DC	60	WHT	543
a5	A/8001U	70	ORANGE	654	b5	A/8001U	70	BLUE	640	c5	A/8001U	50	BLUE	646	d5	A/8001U	50	BLUE	713	br5	DC	60	WHT	1046
a6	A/8001U	70	ORANGE	616	b6	A/8001U	70	BLUE	605	c6	A/8001U	50	BLUE	648	d6	A/8001U	50	BLUE	643	br6	DC	60	WHT	1005
a7	A/8001U	70	ORANGE	616	b7	A/8001U	70	BLUE	605	c7	A/8001U	50	BLUE	590	d7	A/8001U	50	BLUE	842	br7	DC	60	WHT	1039
a8	A/8001U	70	ORANGE	645	b8	A/8001U	70	BLUE	638	c8	A/8001U	50	BLUE	689	d8	A/8001U	50	BLUE	819	br8	DC	60	WHT	839
a9	A/8001U	70	ORANGE	559	b9	A/8001U	50	BLUE	547	c9	A/8001U	50	BLUE	607						br9	DC	60	WHT	802
a10	A/8001U	70	ORANGE	490	b10	A/8001U	50	BLUE	485	c10	A/8001U	50	BLUE	568						br10	DC	60	WHT	843
a11	A/8001U	70	ORANGE	534	b11	A/8001U	50	BLUE	515	c11	A/8001U	50	BLUE	551										
a12	A/8001U	70	ORANGE	519	b12	A/8001U	50	BLUE	506	c12	A/8001U	50	BLUE	531										
a13	A/8001U	70	ORANGE	1058	b13	A/8001U	50	BLUE	503	c13	A/8001U	50	BLUE	772										
a14	A/8001U	70	ORANGE	1015	b14	A/8001U	50	BLUE	498	c14	A/8001U	50	BLUE	760										
a15	A/8001U	70	ORANGE	1019	b15	A/8001U	50	BLUE	442	c15	A/8001U	50	BLUE	951										
a16	A/8001U	50	BLUE	472	b16	A/8001U	50	BLUE	930	c16	A/8001U	50	BLUE	987										
a17	A/8001U	50	BLUE	910																				
2a1	A/8001U	130	ORANGE	659	2b1	A/8001U	130	BLUE	652	2c1	A/8001U	70	BLUE	391						2br1	A/8001U	70	BLUE	755
2a2	A/8001U	130	ORANGE	648	2b2	A/8001U	130	BLUE	644	2c2	A/8001U	70	BLUE	258						2br2	A/8001U	70	BLUE	523
2a3	A/8001U	130	ORANGE	622	2b3	A/8001U	130	BLUE	609	2c3	A/8001U	70	BLUE	235						3br1	A/8001U	70	BLUE	1224
2a4	A/8001U	130	ORANGE	618	2b4	A/8001U	130	BLUE	609	2c4	A/8001U	70	BLUE	344						3br2	A/8001U	70	BLUE	1149
2a5	A/8001U	130	ORANGE	694	2b5	A/8001U	90	BLUE	687	2c5	A/8001U	90	BLUE	1307						3br3	A/8001U	70	BLUE	1371
2a6	A/8001U	90	ORANGE	608	2b6	A/8001U	90	BLUE	621	2c6	A/8001U	90	BLUE	1277										
2a7	A/8001U	130	ORANGE	1157	2b7	A/8001U	90	BLUE	1342	2c7	A/8001U	90	BLUE	1012										
3a3	A/8001U	130	ORANGE	1139	3b3	A/8001U	130	BLUE	753	3c1	A/8001U	130	BLUE	971										
					2st1	A/8001U	70	BLUE	440	3c2	A/8001U	130	BLUE	1027										
					STB MAIN	A/8001U	70	BLUE	3433															
3a1	A/8001U	230	ORANGE	3275	3b1	A/8001U	190	BLUE	3.208	4c1	A/8001U	190	BLUE	2658										
3a2	A/8001U	230	ORANGE	3322	3b2	A/8001U	190	BLUE	3.277	4c2	A/8001U	130	BLUE	2676						BRMAIN	TARAX	200	RED	2.851
4a1	A/8001U	190	ORANGE	2219	4b1	A/8001U	130	BLUE	2.558											KNOT POINT:				2.651

LINES

KODE P 16

REF.	MAT.	kg	COLOR	mm	REF.	MAT.	kg	COLOR	mm	REF.	MAT.	kg	COLOR	mm	REF.	MAT.	kg	COLOR	mm	REF.	MAT.	kg	COLOR	mm
A					B					C					D					BRAKE				
a1	A/8001U	70	ORANGE	748	b1	A/8001U	70	BLUE	740	c1	A/8001U	50	BLUE	717	d1	A/8001U	50	BLUE	824	br1	DC	60	WHT	645
a2	A/8001U	70	ORANGE	689	b2	A/8001U	70	BLUE	683	c2	A/8001U	50	BLUE	616	d2	A/8001U	50	BLUE	823	br2	DC	60	WHT	350
a3	A/8001U	70	ORANGE	689	b3	A/8001U	70	BLUE	683	c3	A/8001U	50	BLUE	706	d3	A/8001U	50	BLUE	802	br3	DC	60	WHT	604
a4	A/8001U	70	ORANGE	727	b4	A/8001U	70	BLUE	723	c4	A/8001U	50	BLUE	739	d4	A/8001U	50	BLUE	741	br4	DC	60	WHT	575
a5	A/8001U	70	ORANGE	698	b5	A/8001U	70	BLUE	683	c5	A/8001U	50	BLUE	690	d5	A/8001U	50	BLUE	762	br5	DC	60	WHT	594
a6	A/8001U	70	ORANGE	658	b6	A/8001U	70	BLUE	647	c6	A/8001U	50	BLUE	694	d6	A/8001U	50	BLUE	687	br6	DC	60	WHT	460
a7	A/8001U	70	ORANGE	658	b7	A/8001U	70	BLUE	647	c7	A/8001U	50	BLUE	630	d7	A/8001U	50	BLUE	899	br7	DC	60	WHT	473
a8	A/8001U	70	ORANGE	691	b8	A/8001U	70	BLUE	683	c8	A/8001U	50	BLUE	737	d8	A/8001U	50	BLUE	876	br8	DC	60	WHT	544
a9	A/8001U	70	ORANGE	598	b9	A/8001U	50	BLUE	585	c9	A/8001U	50	BLUE	649						br9	DC	60	WHT	1057
a10	A/8001U	70	ORANGE	524	b10	A/8001U	50	BLUE	519	c10	A/8001U	50	BLUE	607						br10	DC	60	WHT	978
a11	A/8001U	70	ORANGE	571	b11	A/8001U	50	BLUE	550	c11	A/8001U	50	BLUE	590						br11	DC	60	WHT	848
a12	A/8001U	70	ORANGE	555	b12	A/8001U	50	BLUE	541	c12	A/8001U	50	BLUE	569										
a13	A/8001U	70	ORANGE	1130	b13	A/8001U	50	BLUE	538	c13	A/8001U	50	BLUE	825										
a14	A/8001U	70	ORANGE	1085	b14	A/8001U	50	BLUE	533	c14	A/8001U	50	BLUE	812										
a15	A/8001U	70	ORANGE	1090	b15	A/8001U	50	BLUE	472	c15	A/8001U	50	BLUE	1.017										
a16	A/8001U	50	BLUE	505	b16	A/8001U	50	BLUE	994	c16	A/8001U	50	BLUE	1055										
a17	A/8001U	50	BLUE	973																				
2a1	A/8001U	130	ORANGE	704	2b1	A/8001U	130	BLUE	697	2c1	A/8001U	70	BLUE	416						2br1	A/8001U	70	BLUE	897
2a2	A/8001U	130	ORANGE	694	2b2	A/8001U	130	BLUE	689	2c2	A/8001U	70	BLUE	278						2br2	A/8001U	70	BLUE	469
2a3	A/8001U	130	ORANGE	664	2b3	A/8001U	130	BLUE	651	2c3	A/8001U	70	BLUE	249						2br3	A/8001U	70	BLUE	609
2a4	A/8001U	130	ORANGE	661	2b4	A/8001U	130	BLUE	652	2c4	A/8001U	70	BLUE	369						2br4	A/8001U	70	BLUE	568
2a5	A/8001U	130	ORANGE	741	2b5	A/8001U	90	BLUE	734	2c5	A/8001U	90	BLUE	1396						3br1	A/8001U	70	BLUE	1866
2a6	A/8001U	90	ORANGE	650	2b6	A/8001U	90	BLUE	665	2c6	A/8001U	90	BLUE	1365						3br2	A/8001U	70	BLUE	1632
2a7	A/8001U	130	ORANGE	1238	2b7	A/8001U	90	BLUE	1436	2c7	A/8001U	90	BLUE	1083						3br2	A/8001U	70	BLUE	1631
3a3	A/8001U	130	ORANGE	1218	3b3	A/8001U	130	BLUE	805	3c1	A/8001U	130	BLUE	1034										
					2st1	A/8001U	70	BLUE	471	3c2	A/8001U	130	BLUE	1101										
					STB MAIN	A/8001U	70	BLUE	3715															
3a1	A/8001U	230	ORANGE	3535	3b1	A/8001U	190	BLUE	3.463	4c1	A/8001U	190	BLUE	2878										
3a2	A/8001U	230	ORANGE	3591	3b2	A/8001U	190	BLUE	3.543	4c2	A/8001U	130	BLUE	2914						BRMAIN	TARAX	200	RED	2.655
4a1	A/8001U	190	ORANGE	2415	4b1	A/8001U	130	BLUE	2.778										KNOT POINT:				2.455	

LINES

KODE P 18

REF.	MAT.	kg	COLOR	mm	REF.	MAT.	kg	COLOR	mm	REF.	MAT.	kg	COLOR	mm	REF.	MAT.	kg	COLOR	mm	REF.	MAT.	kg	COLOR	mm
A					B					C					D					BRAKE				
a1	A/8001U	70	ORANGE	793	b1	A/8001U	70	BLUE	783	c1	A/8001U	50	BLUE	760	d1	A/8001U	50	BLUE	874	br1	DC	60	WHT	685
a2	A/8001U	70	ORANGE	731	b2	A/8001U	70	BLUE	724	c2	A/8001U	50	BLUE	654	d2	A/8001U	50	BLUE	873	br2	DC	60	WHT	372
a3	A/8001U	70	ORANGE	731	b3	A/8001U	70	BLUE	724	c3	A/8001U	50	BLUE	749	d3	A/8001U	50	BLUE	850	br3	DC	60	WHT	641
a4	A/8001U	70	ORANGE	770	b4	A/8001U	70	BLUE	767	c4	A/8001U	50	BLUE	783	d4	A/8001U	50	BLUE	787	br4	DC	60	WHT	610
a5	A/8001U	70	ORANGE	742	b5	A/8001U	70	BLUE	726	c5	A/8001U	50	BLUE	732	d5	A/8001U	50	BLUE	807	br5	DC	60	WHT	630
a6	A/8001U	70	ORANGE	698	b6	A/8001U	70	BLUE	685	c6	A/8001U	50	BLUE	735	d6	A/8001U	50	BLUE	728	br6	DC	60	WHT	484
a7	A/8001U	70	ORANGE	698	b7	A/8001U	70	BLUE	686	c7	A/8001U	50	BLUE	669	d7	A/8001U	50	BLUE	960	br7	DC	60	WHT	506
a8	A/8001U	70	ORANGE	730	b8	A/8001U	70	BLUE	721	c8	A/8001U	50	BLUE	780	d8	A/8001U	50	BLUE	926	br8	DC	60	WHT	575
a9	A/8001U	70	ORANGE	633	b9	A/8001U	50	BLUE	619	c9	A/8001U	50	BLUE	688						br9	DC	60	WHT	1129
a10	A/8001U	70	ORANGE	551	b10	A/8001U	50	BLUE	546	c10	A/8001U	50	BLUE	640						br10	DC	60	WHT	1039
a11	A/8001U	70	ORANGE	606	b11	A/8001U	50	BLUE	585	c11	A/8001U	50	BLUE	625						br11	DC	60	WHT	895
a12	A/8001U	70	ORANGE	585	b12	A/8001U	50	BLUE	571	c12	A/8001U	50	BLUE	598										
a13	A/8001U	70	ORANGE	1201	b13	A/8001U	50	BLUE	572	c13	A/8001U	50	BLUE	881										
a14	A/8001U	70	ORANGE	1149	b14	A/8001U	50	BLUE	562	c14	A/8001U	50	BLUE	862										
a15	A/8001U	70	ORANGE	1149	b15	A/8001U	50	BLUE	503	c15	A/8001U	50	BLUE	1.083										
a16	A/8001U	50	BLUE	537	b16	A/8001U	50	BLUE	1.054	c16	A/8001U	50	BLUE	1119										
a17	A/8001U	50	BLUE	1031																				
2a1	A/8001U	130	ORANGE	746	2b1	A/8001U	130	BLUE	738	2c1	A/8001U	70	BLUE	441						2br1	A/8001U	70	BLUE	952
2a2	A/8001U	130	ORANGE	736	2b2	A/8001U	130	BLUE	730	2c2	A/8001U	70	BLUE	294						2br2	A/8001U	70	BLUE	498
2a3	A/8001U	130	ORANGE	705	2b3	A/8001U	130	BLUE	691	2c3	A/8001U	70	BLUE	267						2br3	A/8001U	70	BLUE	652
2a4	A/8001U	130	ORANGE	700	2b4	A/8001U	130	BLUE	690	2c4	A/8001U	70	BLUE	389						2br4	A/8001U	70	BLUE	595
2a5	A/8001U	130	ORANGE	792	2b5	A/8001U	90	BLUE	780	2c5	A/8001U	90	BLUE	1487						3br1	A/8001U	70	BLUE	1990
2a6	A/8001U	90	ORANGE	686	2b6	A/8001U	90	BLUE	698	2c6	A/8001U	90	BLUE	1447						3br2	A/8001U	70	BLUE	1733
2a7	A/8001U	130	ORANGE	1299	2b7	A/8001U	90	BLUE	1511	2c7	A/8001U	90	BLUE	1132						3br3	A/8001U	70	BLUE	1709
3a3	A/8001U	130	ORANGE	1291	3b3	A/8001U	130	BLUE	857	3c1	A/8001U	130	BLUE	1099										
					2st1	A/8001U	70	BLUE	501	3c2	A/8001U	130	BLUE	1165										
					STB MAIN	A/8001U	70	BLUE	3924															
3a1	A/8001U	230	ORANGE	3778	3b1	A/8001U	190	BLUE	3.702	4c1	A/8001U	190	BLUE	3080										
3a2	A/8001U	230	ORANGE	3834	3b2	A/8001U	190	BLUE	3.783	4c2	A/8001U	130	BLUE	3103						BRMAIN	TARAX	200	RED	2.780
4a1	A/8001U	190	ORANGE	2575	4b1	A/8001U	130	BLUE	2.959										KNOT POINT:				2.580	

LINES

KODE P 20

REF.	MAT.	kg	COLOR	mm	REF.	MAT.	kg	COLOR	mm	REF.	MAT.	kg	COLOR	mm	REF.	MAT.	kg	COLOR	mm	REF.	MAT.	kg	COLOR	mm	
A					B					C					D					BRAKE					
a1	A/8001U	70	ORANGE	839	b1	A/8001U	70	BLUE	829	c1	A/8001U	50	BLUE	798	d1	A/8001U	50	BLUE	917	br1	DC	60	WHT	720	
a2	A/8001U	70	ORANGE	770	b2	A/8001U	70	BLUE	762	c2	A/8001U	50	BLUE	681	d2	A/8001U	50	BLUE	924	br2	DC	60	WHT	384	
a3	A/8001U	70	ORANGE	770	b3	A/8001U	70	BLUE	762	c3	A/8001U	50	BLUE	793	d3	A/8001U	50	BLUE	895	br3	DC	60	WHT	680	
a4	A/8001U	70	ORANGE	800	b4	A/8001U	70	BLUE	793	c4	A/8001U	50	BLUE	816	d4	A/8001U	50	BLUE	836	br4	DC	60	WHT	641	
a5	A/8001U	70	ORANGE	786	b5	A/8001U	70	BLUE	768	c5	A/8001U	50	BLUE	771	d5	A/8001U	50	BLUE	852	br5	DC	60	WHT	665	
a6	A/8001U	70	ORANGE	735	b6	A/8001U	70	BLUE	720	c6	A/8001U	50	BLUE	767	d6	A/8001U	50	BLUE	770	br6	DC	60	WHT	493	
a7	A/8001U	70	ORANGE	735	b7	A/8001U	70	BLUE	721	c7	A/8001U	50	BLUE	711	d7	A/8001U	50	BLUE	1000	br7	DC	60	WHT	532	
a8	A/8001U	70	ORANGE	755	b8	A/8001U	70	BLUE	744	c8	A/8001U	50	BLUE	814	d8	A/8001U	50	BLUE	990	br8	DC	60	WHT	607	
a9	A/8001U	70	ORANGE	670	b9	A/8001U	50	BLUE	658	c9	A/8001U	50	BLUE	726						br9	DC	60	WHT	1194	
a10	A/8001U	70	ORANGE	576	b10	A/8001U	50	BLUE	574	c10	A/8001U	50	BLUE	668						br10	DC	60	WHT	1104	
a11	A/8001U	70	ORANGE	641	b11	A/8001U	50	BLUE	619	c11	A/8001U	50	BLUE	660						br11	DC	60	WHT	931	
a12	A/8001U	70	ORANGE	624	b12	A/8001U	50	BLUE	611	c12	A/8001U	50	BLUE	638											
a13	A/8001U	70	ORANGE	1252	b13	A/8001U	50	BLUE	595	c13	A/8001U	50	BLUE	916											
a14	A/8001U	70	ORANGE	1203	b14	A/8001U	50	BLUE	592	c14	A/8001U	50	BLUE	904											
a15	A/8001U	70	ORANGE	1201	b15	A/8001U	50	BLUE	551	c15	A/8001U	50	BLUE	1.200											
a16	A/8001U	50	BLUE	585	b16	A/8001U	50	BLUE	1.096	c16	A/8001U	50	BLUE	1166											
a17	A/8001U	50	BLUE	1073																					
2a1	A/8001U	130	ORANGE	788	2b1	A/8001U	130	BLUE	779	2c1	A/8001U	70	BLUE	468						2br1	A/8001U	70	BLUE	1013	
2a2	A/8001U	130	ORANGE	769	2b2	A/8001U	130	BLUE	761	2c2	A/8001U	70	BLUE	292							2br2	A/8001U	70	BLUE	507
2a3	A/8001U	130	ORANGE	745	2b3	A/8001U	130	BLUE	729	2c3	A/8001U	70	BLUE	294							2br3	A/8001U	70	BLUE	702
2a4	A/8001U	130	ORANGE	730	2b4	A/8001U	130	BLUE	718	2c4	A/8001U	70	BLUE	400							2br4	A/8001U	70	BLUE	611
2a5	A/8001U	130	ORANGE	839	2b5	A/8001U	90	BLUE	834	2c5	A/8001U	90	BLUE	1574							3br1	A/8001U	70	BLUE	2139
2a6	A/8001U	90	ORANGE	717	2b6	A/8001U	90	BLUE	741	2c6	A/8001U	90	BLUE	1523							3br2	A/8001U	70	BLUE	1813
2a7	A/8001U	130	ORANGE	1393	2b7	A/8001U	90	BLUE	1618	2c7	A/8001U	90	BLUE	1221							3br3	A/8001U	70	BLUE	1774
3a3	A/8001U	130	ORANGE	1361	3b3	A/8001U	130	BLUE	897	3c1	A/8001U	130	BLUE	1172											
					2st1	A/8001U	70	BLUE	549	3c2	A/8001U	130	BLUE	1208											
					STB MAIN	A/8001U	70	BLUE	4039																
3a1	A/8001U	230	ORANGE	3973	3b1	A/8001U	190	BLUE	3.908	4c1	A/8001U	190	BLUE	3245											
3a2	A/8001U	230	ORANGE	4024	3b2	A/8001U	190	BLUE	3.973	4c2	A/8001U	130	BLUE	3203							BRMAIN	TARAX	200	RED	4.239
4a1	A/8001U	190	ORANGE	2656	4b1	A/8001U	130	BLUE	3.057												KNOT POINT:			4.039	

LINES

KODE P 22

REF.	MAT.	kg	COLOR	mm	REF.	MAT.	kg	COLOR	mm	REF.	MAT.	kg	COLOR	mm	REF.	MAT.	kg	COLOR	mm	REF.	MAT.	kg	COLOR	mm
A					B					C					D					BRAKE				
a1	A/8001U	70	ORANGE	879	b1	A/8001U	70	BLUE	868	c1	A/8001U	50	BLUE	837	d1	A/8001U	50	BLUE	962	br1	DC	60	WHT	755
a2	A/8001U	70	ORANGE	808	b2	A/8001U	70	BLUE	799	c2	A/8001U	50	BLUE	716	d2	A/8001U	50	BLUE	969	br2	DC	60	WHT	403
a3	A/8001U	70	ORANGE	808	b3	A/8001U	70	BLUE	799	c3	A/8001U	50	BLUE	832	d3	A/8001U	50	BLUE	939	br3	DC	60	WHT	712
a4	A/8001U	70	ORANGE	840	b4	A/8001U	70	BLUE	833	c4	A/8001U	50	BLUE	857	d4	A/8001U	50	BLUE	877	br4	DC	60	WHT	673
a5	A/8001U	70	ORANGE	824	b5	A/8001U	70	BLUE	805	c5	A/8001U	50	BLUE	808	d5	A/8001U	50	BLUE	893	br5	DC	60	WHT	698
a6	A/8001U	70	ORANGE	771	b6	A/8001U	70	BLUE	755	c6	A/8001U	50	BLUE	806	d6	A/8001U	50	BLUE	807	br6	DC	60	WHT	518
a7	A/8001U	70	ORANGE	771	b7	A/8001U	70	BLUE	756	c7	A/8001U	50	BLUE	745	d7	A/8001U	50	BLUE	1049	br7	DC	60	WHT	557
a8	A/8001U	70	ORANGE	793	b8	A/8001U	70	BLUE	781	c8	A/8001U	50	BLUE	854	d8	A/8001U	50	BLUE	1040	br8	DC	60	WHT	637
a9	A/8001U	70	ORANGE	702	b9	A/8001U	50	BLUE	690	c9	A/8001U	50	BLUE	761						br9	DC	60	WHT	1251
a10	A/8001U	70	ORANGE	604	b10	A/8001U	50	BLUE	602	c10	A/8001U	50	BLUE	701						br10	DC	60	WHT	1159
a11	A/8001U	70	ORANGE	672	b11	A/8001U	50	BLUE	650	c11	A/8001U	50	BLUE	692						br11	DC	60	WHT	977
a12	A/8001U	70	ORANGE	655	b12	A/8001U	50	BLUE	641	c12	A/8001U	50	BLUE	670										
a13	A/8001U	70	ORANGE	1313	b13	A/8001U	50	BLUE	624	c13	A/8001U	50	BLUE	960										
a14	A/8001U	70	ORANGE	1262	b14	A/8001U	50	BLUE	621	c14	A/8001U	50	BLUE	948										
a15	A/8001U	70	ORANGE	1260	b15	A/8001U	50	BLUE	578	c15	A/8001U	50	BLUE	1.259										
a16	A/8001U	50	BLUE	614	b16	A/8001U	50	BLUE	1.150	c16	A/8001U	50	BLUE	1222										
a17	A/8001U	50	BLUE	1126																				
2a1	A/8001U	130	ORANGE	826	2b1	A/8001U	130	BLUE	817	2c1	A/8001U	70	BLUE	490						2br1	A/8001U	70	BLUE	1062
2a2	A/8001U	130	ORANGE	807	2b2	A/8001U	130	BLUE	799	2c2	A/8001U	70	BLUE	307						2br2	A/8001U	70	BLUE	533
2a3	A/8001U	130	ORANGE	781	2b3	A/8001U	130	BLUE	764	2c3	A/8001U	70	BLUE	307						2br3	A/8001U	70	BLUE	735
2a4	A/8001U	130	ORANGE	767	2b4	A/8001U	130	BLUE	754	2c4	A/8001U	70	BLUE	420						2br4	A/8001U	70	BLUE	642
2a5	A/8001U	130	ORANGE	879	2b5	A/8001U	90	BLUE	874	2c5	A/8001U	90	BLUE	1651						3br1	A/8001U	70	BLUE	2240
2a6	A/8001U	90	ORANGE	752	2b6	A/8001U	90	BLUE	778	2c6	A/8001U	90	BLUE	1598						3br2	A/8001U	70	BLUE	1902
2a7	A/8001U	130	ORANGE	1461	2b7	A/8001U	90	BLUE	1698	2c7	A/8001U	90	BLUE	1281						3br3	A/8001U	70	BLUE	1865
3a3	A/8001U	130	ORANGE	1427	3b3	A/8001U	130	BLUE	941	3c1	A/8001U	130	BLUE	1239										
					2st1	A/8001U	70	BLUE	575	3c2	A/8001U	130	BLUE	1269										
					STB MAIN	A/8001U	70	BLUE	4268															
3a1	A/8001U	230	ORANGE	4209	3b1	A/8001U	190	BLUE	4.135	4c1	A/8001U	190	BLUE	3430										
3a2	A/8001U	230	ORANGE	4249	3b2	A/8001U	190	BLUE	4.195	4c2	A/8001U	130	BLUE	3388						BRMAIN	TARAX	200	RED	3.107
4a1	A/8001U	190	ORANGE	2817	4b1	A/8001U	130	BLUE	3.237											KNOT POINT:				2.907

LINES

KODE P 24

REF.	MAT.	kg	COLOR	mm	REF.	MAT.	kg	COLOR	mm	REF.	MAT.	kg	COLOR	mm	REF.	MAT.	kg	COLOR	mm	REF.	MAT.	kg	COLOR	mm
A					B					C					D					BRAKE				
a1	A/8001U	70	ORANGE	918	b1	A/8001U	70	BLUE	906	c1	A/8001U	50	BLUE	874	d1	A/8001U	50	BLUE	1005	br1	DC	60	WHT	789
a2	A/8001U	70	ORANGE	844	b2	A/8001U	70	BLUE	835	c2	A/8001U	50	BLUE	749	d2	A/8001U	50	BLUE	1012	br2	DC	60	WHT	422
a3	A/8001U	70	ORANGE	844	b3	A/8001U	70	BLUE	835	c3	A/8001U	50	BLUE	869	d3	A/8001U	50	BLUE	981	br3	DC	60	WHT	744
a4	A/8001U	70	ORANGE	878	b4	A/8001U	70	BLUE	872	c4	A/8001U	50	BLUE	896	d4	A/8001U	50	BLUE	915	br4	DC	60	WHT	703
a5	A/8001U	70	ORANGE	860	b5	A/8001U	70	BLUE	840	c5	A/8001U	50	BLUE	844	d5	A/8001U	50	BLUE	933	br5	DC	60	WHT	729
a6	A/8001U	70	ORANGE	805	b6	A/8001U	70	BLUE	789	c6	A/8001U	50	BLUE	843	d6	A/8001U	50	BLUE	843	br6	DC	60	WHT	542
a7	A/8001U	70	ORANGE	806	b7	A/8001U	70	BLUE	790	c7	A/8001U	50	BLUE	778	d7	A/8001U	50	BLUE	1095	br7	DC	60	WHT	582
a8	A/8001U	70	ORANGE	828	b8	A/8001U	70	BLUE	816	c8	A/8001U	50	BLUE	892	d8	A/8001U	50	BLUE	1087	br8	DC	60	WHT	665
a9	A/8001U	70	ORANGE	734	b9	A/8001U	50	BLUE	721	c9	A/8001U	50	BLUE	795						br9	DC	60	WHT	1306
a10	A/8001U	70	ORANGE	631	b10	A/8001U	50	BLUE	630	c10	A/8001U	50	BLUE	733						br10	DC	60	WHT	1210
a11	A/8001U	70	ORANGE	702	b11	A/8001U	50	BLUE	678	c11	A/8001U	50	BLUE	723						br11	DC	60	WHT	1021
a12	A/8001U	70	ORANGE	684	b12	A/8001U	50	BLUE	670	c12	A/8001U	50	BLUE	700										
a13	A/8001U	70	ORANGE	1372	b13	A/8001U	50	BLUE	652	c13	A/8001U	50	BLUE	1003										
a14	A/8001U	70	ORANGE	1318	b14	A/8001U	50	BLUE	648	c14	A/8001U	50	BLUE	990										
a15	A/8001U	70	ORANGE	1317	b15	A/8001U	50	BLUE	603	c15	A/8001U	50	BLUE	1.316										
a16	A/8001U	50	BLUE	641	b16	A/8001U	50	BLUE	1.201	c16	A/8001U	50	BLUE	1276										
a17	A/8001U	50	BLUE	1176																				
2a1	A/8001U	130	ORANGE	863	2b1	A/8001U	130	BLUE	853	2c1	A/8001U	70	BLUE	511						2br1	A/8001U	70	BLUE	1108
2a2	A/8001U	130	ORANGE	843	2b2	A/8001U	130	BLUE	836	2c2	A/8001U	70	BLUE	322						2br2	A/8001U	70	BLUE	558
2a3	A/8001U	130	ORANGE	815	2b3	A/8001U	130	BLUE	798	2c3	A/8001U	70	BLUE	319						2br3	A/8001U	70	BLUE	766
2a4	A/8001U	130	ORANGE	801	2b4	A/8001U	130	BLUE	788	2c4	A/8001U	70	BLUE	439						2br4	A/8001U	70	BLUE	672
2a5	A/8001U	130	ORANGE	918	2b5	A/8001U	90	BLUE	913	2c5	A/8001U	90	BLUE	1724						3br1	A/8001U	70	BLUE	2336
2a6	A/8001U	90	ORANGE	786	2b6	A/8001U	90	BLUE	813	2c6	A/8001U	90	BLUE	1669						3br2	A/8001U	70	BLUE	1987
2a7	A/8001U	130	ORANGE	1527	2b7	A/8001U	90	BLUE	1775	2c7	A/8001U	90	BLUE	1339						3br3	A/8001U	70	BLUE	1952
3a3	A/8001U	130	ORANGE	1491	3b3	A/8001U	130	BLUE	982	3c1	A/8001U	130	BLUE	1292										
					2st1	A/8001U	70	BLUE	601	3c2	A/8001U	130	BLUE	1328										
					STB MAIN	A/8001U	70	BLUE	4487															
3a1	A/8001U	230	ORANGE	4419	3b1	A/8001U	190	BLUE	4.341	4c1	A/8001U	190	BLUE	3606										
3a2	A/8001U	230	ORANGE	4463	3b2	A/8001U	190	BLUE	4.407	4c2	A/8001U	130	BLUE	3567						BRMAIN	TARAX	200	RED	4.687
4a1	A/8001U	190	ORANGE	2970	4b1	A/8001U	130	BLUE	3.409											KNOT POINT:				4.487

LINES

KODE P 26

REF.	MAT.	kg	COLOR	mm	REF.	MAT.	kg	COLOR	mm	REF.	MAT.	kg	COLOR	mm	REF.	MAT.	kg	COLOR	mm	REF.	MAT.	kg	COLOR	mm		
A					B					C					D					BRAKE						
a1	A/8001U	70	ORANGE	963	b1	A/8001U	70	BLUE	951	c1	A/8001U	50	BLUE	919	d1	A/8001U	50	BLUE	1056	br1	DC	60	WHT	829		
a2	A/8001U	70	ORANGE	887	b2	A/8001U	70	BLUE	877	c2	A/8001U	50	BLUE	788	d2	A/8001U	50	BLUE	1063	br2	DC	60	WHT	445		
a3	A/8001U	70	ORANGE	887	b3	A/8001U	70	BLUE	877	c3	A/8001U	50	BLUE	913	d3	A/8001U	50	BLUE	1031	br3	DC	60	WHT	781		
a4	A/8001U	70	ORANGE	924	b4	A/8001U	70	BLUE	917	c4	A/8001U	50	BLUE	942	d4	A/8001U	50	BLUE	961	br4	DC	60	WHT	740		
a5	A/8001U	70	ORANGE	903	b5	A/8001U	70	BLUE	882	c5	A/8001U	50	BLUE	887	d5	A/8001U	50	BLUE	981	br5	DC	60	WHT	766		
a6	A/8001U	70	ORANGE	846	b6	A/8001U	70	BLUE	829	c6	A/8001U	50	BLUE	886	d6	A/8001U	50	BLUE	886	br6	DC	60	WHT	570		
a7	A/8001U	70	ORANGE	847	b7	A/8001U	70	BLUE	830	c7	A/8001U	50	BLUE	817	d7	A/8001U	50	BLUE	1150	br7	DC	60	WHT	610		
a8	A/8001U	70	ORANGE	871	b8	A/8001U	70	BLUE	859	c8	A/8001U	50	BLUE	938	d8	A/8001U	50	BLUE	1143	br8	DC	60	WHT	699		
a9	A/8001U	70	ORANGE	771	b9	A/8001U	50	BLUE	758	c9	A/8001U	50	BLUE	836							br9	DC	60	WHT	1371	
a10	A/8001U	70	ORANGE	664	b10	A/8001U	50	BLUE	662	c10	A/8001U	50	BLUE	771							br10	DC	60	WHT	1271	
a11	A/8001U	70	ORANGE	738	b11	A/8001U	50	BLUE	713	c11	A/8001U	50	BLUE	760							br11	DC	60	WHT	1073	
a12	A/8001U	70	ORANGE	719	b12	A/8001U	50	BLUE	704	c12	A/8001U	50	BLUE	736												
a13	A/8001U	70	ORANGE	1441	b13	A/8001U	50	BLUE	685	c13	A/8001U	50	BLUE	1053												
a14	A/8001U	70	ORANGE	1386	b14	A/8001U	50	BLUE	682	c14	A/8001U	50	BLUE	1040												
a15	A/8001U	70	ORANGE	1384	b15	A/8001U	50	BLUE	634	c15	A/8001U	50	BLUE	1.384												
a16	A/8001U	50	BLUE	674	b16	A/8001U	50	BLUE	1.262	c16	A/8001U	50	BLUE	1341												
a17	A/8001U	50	BLUE	1236																						
2a1	A/8001U	130	ORANGE	906	2b1	A/8001U	130	BLUE	895	2c1	A/8001U	70	BLUE	536							2br1	A/8001U	70	BLUE	1163	
2a2	A/8001U	130	ORANGE	887	2b2	A/8001U	130	BLUE	879	2c2	A/8001U	70	BLUE	340								2br2	A/8001U	70	BLUE	588
2a3	A/8001U	130	ORANGE	856	2b3	A/8001U	130	BLUE	838	2c3	A/8001U	70	BLUE	333								2br3	A/8001U	70	BLUE	804
2a4	A/8001U	130	ORANGE	842	2b4	A/8001U	130	BLUE	828	2c4	A/8001U	70	BLUE	462								2br4	A/8001U	70	BLUE	707
2a5	A/8001U	130	ORANGE	964	2b5	A/8001U	90	BLUE	959	2c5	A/8001U	90	BLUE	1811								3br1	A/8001U	70	BLUE	2451
2a6	A/8001U	90	ORANGE	826	2b6	A/8001U	90	BLUE	855	2c6	A/8001U	90	BLUE	1753								3br2	A/8001U	70	BLUE	2089
2a7	A/8001U	130	ORANGE	1606	2b7	A/8001U	90	BLUE	1866	2c7	A/8001U	90	BLUE	1408								3br3	A/8001U	70	BLUE	2055
3a3	A/8001U	130	ORANGE	1566	3b3	A/8001U	130	BLUE	1032	3c1	A/8001U	130	BLUE	1355												
					2st1	A/8001U	70	BLUE	632	3c2	A/8001U	130	BLUE	1398												
					STB MAIN	A/8001U	70	BLUE	4748																	
3a1	A/8001U	230	ORANGE	4669	3b1	A/8001U	190	BLUE	4.586	4c1	A/8001U	190	BLUE	3817												
3a2	A/8001U	230	ORANGE	4719	3b2	A/8001U	190	BLUE	4.660	4c2	A/8001U	130	BLUE	3778								BRMAIN	TARAX	200	RED	3.398
4a1	A/8001U	190	ORANGE	3152	4b1	A/8001U	130	BLUE	3.614													KNOT POINT:			3.198	

KODE P - 12

LINES HEIGHT + RISER mm

	A	B	C	D	br
1	4829	4751	4871	4966	4972
2	4775	4698	4780	4838	4784
3	4763	4689	4735	4849	4691
4	4794	4721	4761	4896	4700
5	4790	4721	4750	4878	4609
6	4752	4686	4751	4783	4569
7	4748	4685	4798	4720	4601
8	4775	4715	4890	4698	4620
9	4789	4728	4778		4587
10	4724	4669	4741		4666
11	4685	4635	4697		
12	4671	4626	4678		
13	4631	4602	4654		
14	4590	4596	4642		
15	4593	4520	4591		
16	4548	4570	4625		
17	4551				

KODE P - 14

LINES HEIGHT + RISER mm

	A	B	C	D	br
1	5110	5027	5155	5255	5285
2	5053	4972	5060	5123	5087
3	5043	4964	5013	5136	4990
4	5076	4999	5043	5189	5000
5	5073	5000	5032	5169	4905
6	5034	4965	5034	5069	4864
7	5031	4965	5085	5003	4899
8	5060	4997	5183	4981	4920
9	5077	5012	5063		4886
10	5008	4950	5024		4973
11	4968	4914	4978		
12	4953	4905	4958		
13	4910	4880	4933		
14	4867	4875	4921		
15	4871	4793	4868		
16	4823	4846	4904		
17	4826				

KODE P - 16

LINES HEIGHT + RISER mm

	A	B	C	D	br
1	5462	5372	5512	5619	5923
2	5403	5315	5411	5479	5627
3	5393	5308	5362	5497	5453
4	5430	5348	5395	5556	5425
5	5428	5350	5385	5546	5349
6	5388	5314	5389	5440	5215
7	5386	5315	5444	5371	5187
8	5418	5351	5551	5347	5258
9	5438	5368	5433		5206
10	5364	5302	5391		5127
11	5321	5265	5343		5046
12	5306	5256	5322		
13	5260	5228	5296		
14	5215	5223	5283		
15	5219	5136	5215		
16	5169	5193	5254		
17	5171				

KODE P - 18

LINES HEIGHT + RISER mm

	A	B	C	D	br
1	5794	5701	5849	5962	6266
2	5732	5642	5743	5815	5953
3	5722	5634	5691	5832	5768
4	5761	5677	5725	5891	5737
5	5758	5678	5713	5874	5654
6	5713	5637	5716	5754	5508
7	5709	5637	5772	5672	5473
8	5741	5672	5883	5637	5542
9	5759	5688	5754		5481
10	5677	5615	5707		5391
11	5628	5571	5651		5303
12	5607	5557	5624		
13	5553	5523	5592		
14	5501	5513	5574		
15	5501	5411	5492		
16	5445	5466	5527		
17	5443				

KODE P - 20

LINES HEIGHT + RISER mm

	A	B	C	D	br
1	6076	5986	6148	6267	6639
2	6007	5918	6031	6098	6304
3	5987	5901	5967	6107	6093
4	6016	5932	5990	6154	6055
5	6025	5939	5983	6102	5947
6	5973	5891	5980	5969	5775
7	5960	5881	6029	5897	5723
8	5980	5904	6132	5887	5798
9	5987	5909	5976		5738
10	5893	5825	5919		5649
11	5838	5778	5859		5538
12	5822	5769	5837		
13	5772	5742	5813		
14	5723	5738	5801		
15	5721	5613	5718		
16	5647	5614	5684		
17	5592				

KODE P - 22

LINES HEIGHT + RISER mm

	A	B	C	D	br
1	6390	6289	6461	6586	7022
2	6319	6220	6340	6410	6671
3	6299	6203	6273	6410	6451
4	6331	6237	6298	6461	6412
5	6323	6233	6279	6405	6300
6	6270	6183	6277	6266	6120
7	6256	6174	6329	6191	6067
8	6278	6198	6438	6182	6146
9	6287	6205	6273		6084
10	6188	6117	6213		5992
11	6131	6068	6151		5876
12	6114	6059	6128		
13	6063	6031	6103		
14	6011	6027	6090		
15	6010	5895	6007		
16	5932	5897	5970		
17	5873				

KODE P - 24

LINES HEIGHT + RISER mm

	A	B	C	D	br
1	6674	6568	6748	6879	7310
2	6600	6497	6623	6697	6943
3	6581	6480	6554	6699	6715
4	6615	6517	6581	6754	6675
5	6608	6514	6562	6697	6559
6	6553	6462	6560	6552	6372
7	6540	6453	6616	6474	6318
8	6562	6480	6731	6466	6401
9	6573	6488	6558		6337
10	6471	6396	6496		6242
11	6411	6345	6432		6123
12	6394	6337	6408		
13	6340	6307	6382		
14	6287	6304	6369		
15	6285	6166	6282		
16	6203	6167	6243		
17	6142				

KODE P - 26

LINES HEIGHT + RISER mm

	A	B	C	D	br
1	7013	6901	7092	7229	7700
2	6937	6828	6961	7040	7316
3	6917	6811	6890	7044	7077
4	6955	6851	6919	7103	7036
5	6948	6849	6900	7042	6916
6	6891	6796	6899	6891	6720
7	6878	6787	6959	6810	6664
8	6902	6815	7080	6803	6753
9	6915	6825	6897		6687
10	6808	6729	6832		6587
11	6746	6676	6765		6464
12	6727	6667	6741		
13	6671	6636	6713		
14	6615	6633	6700		
15	6614	6488	6611		
16	6528	6489	6568		
17	6463				

SUSPENSION

MATERIAL CODE		DC	A-8001/U	A-8001/U	8001/U	A-8001/U	A-8001/U	TARAX
STRENGTH CODE		060	050	070	90	130	230	200
DIAMETER m/m	∅	0,6	0,5	0,7	0,8	0,9	1,1 x 1,4	1,7
CORE MATERIAL		DYNEEMA	ARAMID	ARAMID	ARAMID	ARAMID	ARAMID	DYNEEMA
SLEEVE MATERIAL		NO	NO	NO	NO	NO	NO	POLYESTER
WEIGHT G/M	TOTAL	0,24	0,3	0,4	0,5	0,8	1,4	2
BREAKING STRENGTH daN	MINIMUM	60	50	70	90	130	230	200
	MAXIMUM	84	59	78	110	144	255	
STRENGTH AFTER								
5.000 BENDING	TEST EN	74	26	39	49	88	69	
CYCLES								
ELONGATION AT	5 daN en %		0,4	0,5	0,4	0,4	0,3	0,1-0,3
	10 daN en %	0,43	0,7	0,7	0,6	0,6	0,5	0,2-0,6
	15 daN en %		1,1	1	0,8	0,8	0,6	0,3-0,7
	20 daN en %		1,5	1,3	1	0,9	0,7	0,3-0,9
	25 daN en %		1,9	1,5	1,3	1	0,8	0,4-1
	30 daN en %	1,2	3,3	2,8	2,3	1,8	1,3	
	75 daN en %			3,7	3,2	3,1	2,3	0,8-1,7
	100 daN en %						3,6	1,2-2
	125 daN en %						3,3	
	150 daN en %						3,6	1,6-2,4
	175 daN en %							
	200 daN en %							2-2,8
ELONGATION MAX. BREAKING STRENGTH %		3,2	3,8	3,9	4,3	4	4,4	

PULLEY

DESCRIPTION

PULLEY	20 m/m
CODE	RF25109
MATERIALS	STAINLESS STEEL NYLON CARBON ACETAL
BEARING	DELRIN®
WEIGHT	9 G/PIECE

TECHNICAL SPECIFICATIONS



DIMENSIONS	m/m
A	32
B	20
C	20
Ø	6 max
LOAD	KG
WORKING LIMIT	250
BREAKING	550

THREAD

SAIL MAKING

NAME	SERAFIL
N° OF REFERENCE	60
MATERIAL	POLYESTER
TYPE OF FINISH	SILK
LINEAR DENSITY	NM 61 / 3 (DTEX 163 * 3)
BREAKING STRENGTH	3,000 CN
ELONGATION	17,00%

PROPIETIES SERAFIL

SOLIDITY ARTIFICIAL LIGTH	ISO 105 B02 > 5 - 6
SOLIDITY SWEAT	ISO 105 E04 > 4
SOLIDITY WASHING	ISO 105 C04 > 3
SOLIDITY GRAZE IN DRY	ISO 105 X12 > 4
SOLIDITY WASHING IN DRY	ISO 105 D01 > 3 - 4
TREATMENT WATER REPELLENT	WR

RISERS MAKING

NAME	COATS BONDED C.F.P.
N° OF REFERENCE	V138
MATERIAL	POLYESTER
TYPE OF FINISH	SILK
BREAKING STRENGTH	9,5 KG
ELONGATION	19%

RISERS

RISERS

N° OF REFERENCE	CSAR7
MATERIAL	POLYESTER & TECHNORA
WIDTH	7 mm
THICKNESS	2,10 mm
BREAKING STRENGTH	600 DAN
ELONGATION	MAX. 8,1%
WEIGTH	13,6 G/M
COLOR	BLACK

N° OF REFERENCE

3455

MATERIAL	POLYESTER & TECHNORA
WIDTH	12 MM
THICKNESS	2,25 mm
BREAKING STRENGTH	1.100 daN
ELONGATION	MAX. 11%
WEIGTH	21,1 G/M
COLOR	BLACK

COLOR INDICATOR

N° OF REFERENCE	IC-G 1-2
MATERIAL	POLYESTER
WIDTH	70 M/M
THICKNESS	0,80 M/M
BREAKING STRENGTH	130 DN
ELONGATION	35 %
WEIGTH	32 G * L.M.
COLOR	GREEN



Niviuk Paragliders

C/ Del Ter 6 - nave D
17165 La Cellera de Ter - Girona - Spain
+34 972 422 878 | info@niviuk.com

www.niviuk.com