

KODE P

Technical *specifications*



TECHNICAL SPECIFICATIONS

| | | | 12 | 14 | 16 | 18 | 20 | 22 | 24 | 26 |
|--|------------|----------------|----------|----------|-------|--------|----------|----------|----------|----------|
| Cells | Number | | 34 | 34 | 34 | 34 | 34 | 34 | 34 | 34 |
| Aspect ratio | Flat | | 4,75 | 4,75 | 4,75 | 4,75 | 4,75 | 4,75 | 4,75 | 4,75 |
| | Projected | | 3,83 | 3,83 | 3,83 | 3,83 | 3,83 | 3,83 | 3,83 | 3,83 |
| Area | Flat | m ² | 12,5 | 14 | 16 | 18 | 20 | 22 | 24 | 26,5 |
| | Projected | m ² | 11,21 | 12,56 | 14,35 | 16,05 | 17,61 | 19,37 | 21,13 | 23,33 |
| Span | Flat | m | 7,71 | 8,16 | 8,72 | 9,25 | 9,75 | 10,22 | 10,68 | 11,22 |
| Chord | Max | m | 2 | 2,11 | 2,26 | 2,39 | 2,52 | 2,65 | 2,76 | 2,9 |
| Lines | Total | m | 190 | 202 | 218 | 231 | 243 | 255 | 267 | 281 |
| | Main | | 3/3/2 | 3/3/2 | 3/3/2 | 3/3/2 | 2+1/3/2 | 2+1/3/2 | 2+1/3/2 | 2+1/3/2 |
| Risers | Number | 3+1 | A/B/C | A/B/C | A/B/C | A/B/C | A+A'/B/C | A+A'/B/C | A+A'/B/C | A+A'/B/C |
| | Speed-bar | mm | 100 | 100 | 100 | 100 | 160 | 160 | 160 | 160 |
| Glider weight | | kg | 1,55 | 1,65 | 1,8 | 1,95 | 2,24 | 2,41 | 2,6 | 2,8 |
| Glider volume | | L | 9 | 9,5 | 10 | 10,5 | 11 | 11,5 | 12 | 12,5 |
| Certification | Max 110 kg | | EN 926-1 | EN 926-1 | - | - | - | - | - | - |
| Total weight in flight EN/LTF A | Min-Max | kg | - | - | - | 50-70 | 60-85 | 65-90 | 70-95 | 90-115 |
| Total weight in flight EN/LTF B | Min-Max | kg | - | - | 45-70 | 70-80 | - | - | - | - |
| Total weight in flight EN/LTF C | Min-Max | kg | - | - | 70-90 | 80-100 | - | - | - | - |

The total weight of the wing may differ ±2% due to variations in the weight of the fabric supplied by the manufacturers.

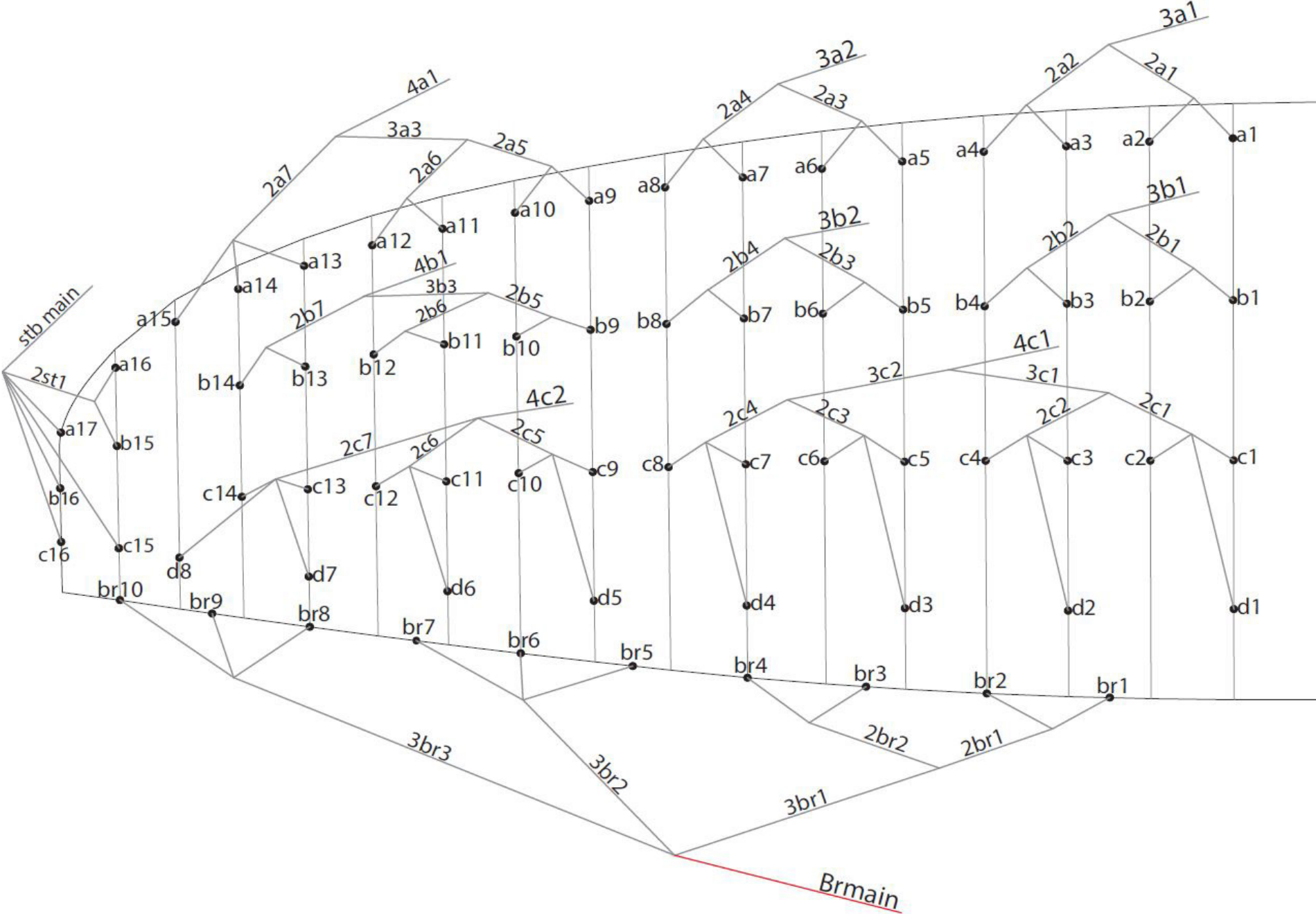
MATERIALS

| CANOPY | FABRIC CODE | SUPPLIER |
|-----------------------------|-------------------|-------------------------|
| UPPER SURFACE | D20 / N10 | DOMINICO TEX CO (KOREA) |
| BOTTOM SURFACE | N10 | DOMINICO TEX CO (KOREA) |
| PROFILES | 70000 E91 | PORCHER IND (FRANCE) |
| | 2044 FM | DOMINICO TEX CO (KOREA) |
| DIAGONALS | 70000 E91 | PORCHER IND (FRANCE) |
| TENSION BANDS | 2044 32 FM | DOMINICO TEX CO (KOREA) |
| LOOPS | LKI - 12 | KOLON IND. (KOREA) |
| REINFORCEMENT LOOPS | 30D ST | DOMINICO TEX CO (KOREA) |
| TRAILING EDGE REINFORCEMENT | MYLAR | D-P (GERMANY) |
| RIBS REINFORCEMNET | LTN-0.5/0.8 STICK | SPORTWARE CO.CHINA |
| THREAD | SERAFIL 60 | AMAN (GERMANY) |

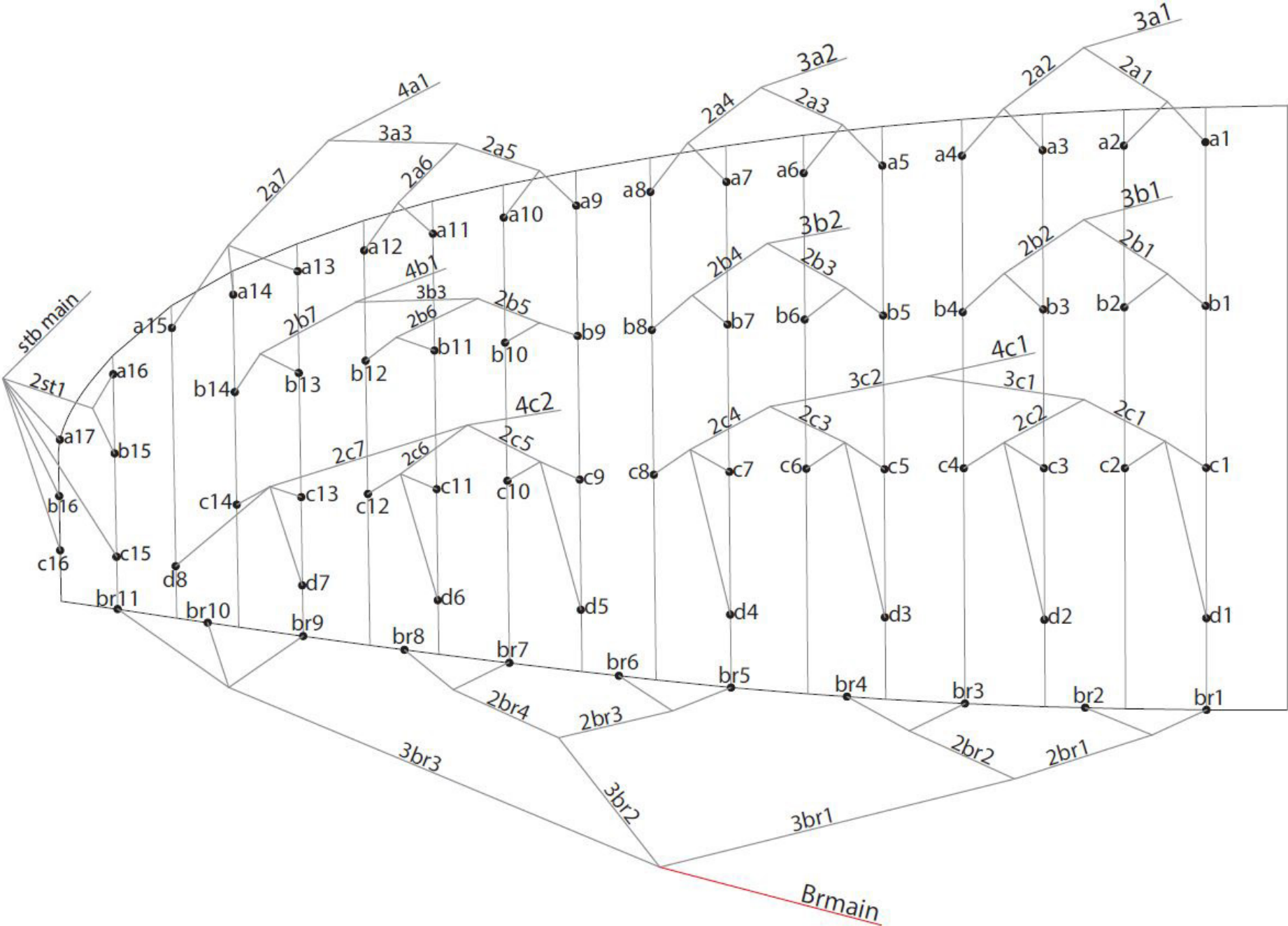
| SUSPENSION LINES | FABRIC CODE | SUPPLIER |
|------------------|--------------|----------------------|
| UPPER CASCADES | DC - 60 | LIROS GMHB (GERMANY) |
| UPPER CASCADES | A-8001/U 50 | EDELRID (GERMANY) |
| UPPER CASCADES | A-8001/U 70 | EDELRID (GERMANY) |
| MIDDLE CASCADES | A-8001/U 70 | EDELRID (GERMANY) |
| MIDDLE CASCADES | A-8001/U 90 | EDELRID (GERMANY) |
| MIDDLE CASCADES | A-8001/U 130 | EDELRID (GERMANY) |
| MAIN | A-8001/U 130 | EDELRID (GERMANY) |
| MAIN | A-8001/U 190 | EDELRID (GERMANY) |
| MAIN | A-8001/U 230 | EDELRID (GERMANY) |
| MAIN BREAK | TARAX-200 | EDELRID (GERMANY) |

| RISERS | FABRIC CODE | SUPPLIER |
|-----------------|--------------|------------------------|
| MATERIAL | 3455 / CSAR7 | COUSIN (FRANCE) |
| COLOR INDICATOR | 210D | TECNI SANGLES (FRANCE) |
| THREAD | V138 | COATS (ENGLAND) |
| PULLEYS | RF25109 | RONSTAN (AUSTRALIA) |

SUSPENSION PLAN (SIZE 12 - 14)



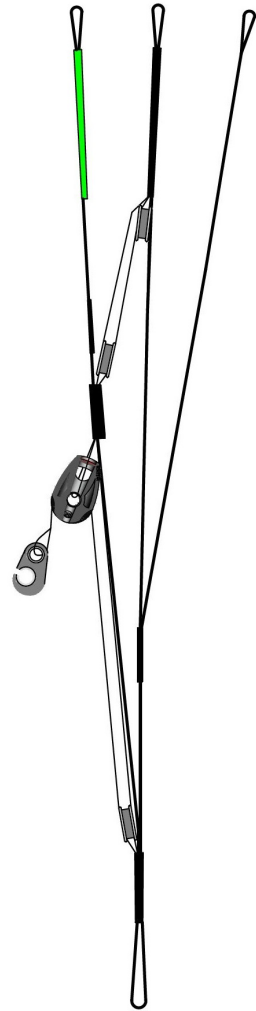
SUSPENSION PLAN (SIZE 16 - 26)



RISER PLAN

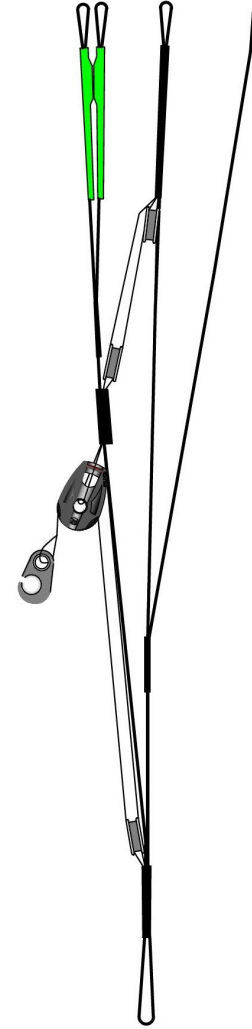
SIZE 12-14-16-18

| A | B | C |
|----------|-----|-----|
| 3a1 | 3b1 | 4c1 |
| 3a2 | 3b2 | 4c2 |
| 4a1 | 4b1 | |
| stb main | | |

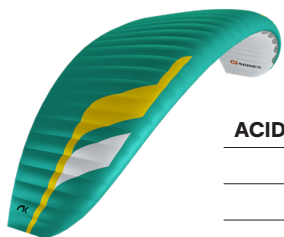


SIZE 20-22-24-26

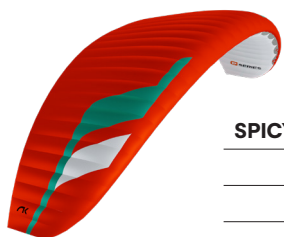
| A | A' | B | C |
|----------|-----|-----|-----|
| 3a1 | 4a1 | 3b1 | 4c1 |
| 3a2 | | 3b2 | 4c2 |
| | | 4b1 | |
| stb main | | | |



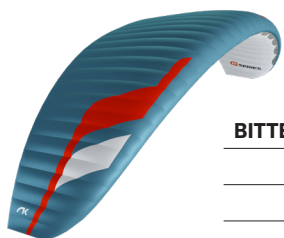
COLORS



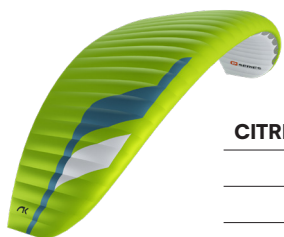
| | | | | |
|-------------|-----|---------------|--------------------|-----------|
| ACID | SB1 | SPECTRA GREEN | TOP | REF: 5335 |
| | SB2 | WHITE | BOTTOM - ALL WHITE | REF: 001 |
| | SB3 | WHITE | HORN | REF: 001 |
| | SB4 | GOLD | SHADOW | REF: 939 |



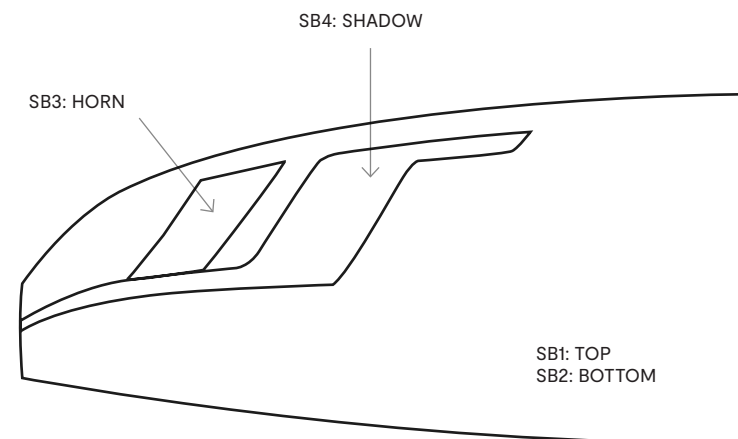
| | | | | |
|--------------|-----|---------------|--------------------|-----------|
| SPICY | SB1 | DRAGON RED | TOP | REF: 636 |
| | SB2 | WHITE | BOTTOM - ALL WHITE | REF: 001 |
| | SB3 | WHITE | HORN | REF: 001 |
| | SB4 | SPECTRA GREEN | SHADOW | REF: 5335 |



| | | | | |
|---------------|-----|------------|--------------------|----------|
| BITTER | SB1 | SLATE BLUE | TOP | REF: 317 |
| | SB2 | WHITE | BOTTOM - ALL WHITE | REF: 001 |
| | SB3 | WHITE | HORN | REF: 001 |
| | SB4 | DRAGON RED | SHADOW | REF: 636 |



| | | | | |
|---------------|-----|------------|--------------------|----------|
| CITRIK | SB1 | LIMA | TOP | REF: 500 |
| | SB2 | WHITE | BOTTOM - ALL WHITE | REF: 001 |
| | SB3 | WHITE | HORN | REF: 001 |
| | SB4 | SLATE BLUE | SHADOW | REF: 317 |



WING LOAD

KODE P

| 12 | | 14 | | 16 | | 18 | | 20 | | 22 | | 24 | | 26 | |
|--------|--------|--------|--------|--------|--------|--------|--------|--------|--------|--------|--------|--------|--------|--------|--------|
| P.T.V. | KG/M2 | P.T.V. | KG/M2 | P.T.V. | KG/M2 | P.T.V. | KG/M2 | P.T.V. | KG/M2 | P.T.V. | KG/M2 | P.T.V. | KG/M2 | P.T.V. | KG/M2 |
| 45 | = 3,60 | 45 | = 3,21 | 45 | = 2,81 | 50 | = 2,78 | 60 | = 3,00 | 65 | = 2,95 | 70 | = 2,92 | 90 | = 3,40 |
| 50 | = 4,00 | 50 | = 3,57 | 50 | = 3,13 | 55 | = 3,06 | 65 | = 3,25 | 70 | = 3,18 | 75 | = 3,13 | 95 | = 3,58 |
| 55 | = 4,40 | 55 | = 3,93 | 55 | = 3,44 | 60 | = 3,33 | 70 | = 3,50 | 75 | = 3,41 | 80 | = 3,33 | 100 | = 3,77 |
| 60 | = 4,80 | 60 | = 4,29 | 60 | = 3,75 | 65 | = 3,61 | 75 | = 3,75 | 80 | = 3,64 | 85 | = 3,54 | 105 | = 3,96 |
| 65 | = 5,20 | 65 | = 4,64 | 65 | = 4,06 | 70 | = 3,89 | 80 | = 4,00 | 85 | = 3,86 | 90 | = 3,75 | 110 | = 4,15 |
| 70 | = 5,60 | 70 | = 5,00 | 70 | = 4,38 | 75 | = 4,17 | 85 | = 4,25 | 90 | = 4,09 | 95 | = 3,96 | 115 | = 4,34 |
| 75 | = 6,00 | 75 | = 5,36 | 75 | = 4,69 | 80 | = 4,44 | | | | | | | | |
| 80 | = 6,40 | 80 | = 5,71 | 80 | = 5,00 | 85 | = 4,72 | | | | | | | | |
| 85 | = 6,80 | 85 | = 6,07 | 85 | = 5,31 | 90 | = 5,00 | | | | | | | | |
| 90 | = 7,20 | 90 | = 6,43 | 90 | = 5,63 | 95 | = 5,28 | | | | | | | | |
| | | | | | | 100 | = 5,56 | | | | | | | | |

LINES

KODE P 12

| REF. | MAT. | kg | COLOR | mm | REF. | MAT. | kg | COLOR | mm | REF. | MAT. | kg | COLOR | mm | REF. | MAT. | kg | COLOR | mm | REF. | MAT. | kg | COLOR | mm | |
|----------|---------|-----|--------|------|-------------|---------|-----|-------|-------|----------|---------|-----|-------|------|----------|---------|----|-------|-----|--------------|-------------|-------|-------|-------|-------|
| A | | | | | B | | | | | C | | | | | D | | | | | BRAKE | | | | | |
| a1 | A/8001U | 70 | ORANGE | 664 | b1 | A/8001U | 70 | BLUE | 657 | c1 | A/8001U | 50 | BLUE | 633 | d1 | A/8001U | 50 | BLUE | 727 | br1 | DC | 60 | WHT | 563 | |
| a2 | A/8001U | 70 | ORANGE | 609 | b2 | A/8001U | 70 | BLUE | 604 | c2 | A/8001U | 50 | BLUE | 542 | d2 | A/8001U | 50 | BLUE | 728 | br2 | DC | 60 | WHT | 375 | |
| a3 | A/8001U | 70 | ORANGE | 609 | b3 | A/8001U | 70 | BLUE | 604 | c3 | A/8001U | 50 | BLUE | 625 | d3 | A/8001U | 50 | BLUE | 709 | br3 | DC | 60 | WHT | 504 | |
| a4 | A/8001U | 70 | ORANGE | 640 | b4 | A/8001U | 70 | BLUE | 636 | c4 | A/8001U | 50 | BLUE | 651 | d4 | A/8001U | 50 | BLUE | 656 | br4 | DC | 60 | WHT | 512 | |
| a5 | A/8001U | 70 | ORANGE | 619 | b5 | A/8001U | 70 | BLUE | 606 | c5 | A/8001U | 50 | BLUE | 610 | d5 | A/8001U | 50 | BLUE | 673 | br5 | DC | 60 | WHT | 990 | |
| a6 | A/8001U | 70 | ORANGE | 582 | b6 | A/8001U | 70 | BLUE | 571 | c6 | A/8001U | 50 | BLUE | 611 | d6 | A/8001U | 50 | BLUE | 607 | br6 | DC | 60 | WHT | 949 | |
| a7 | A/8001U | 70 | ORANGE | 582 | b7 | A/8001U | 70 | BLUE | 572 | c7 | A/8001U | 50 | BLUE | 558 | d7 | A/8001U | 50 | BLUE | 796 | br7 | DC | 60 | WHT | 981 | |
| a8 | A/8001U | 70 | ORANGE | 609 | b8 | A/8001U | 70 | BLUE | 602 | c8 | A/8001U | 50 | BLUE | 650 | d8 | A/8001U | 50 | BLUE | 774 | br8 | DC | 60 | WHT | 793 | |
| a9 | A/8001U | 70 | ORANGE | 528 | b9 | A/8001U | 50 | BLUE | 517 | c9 | A/8001U | 50 | BLUE | 573 | | | | | | br9 | DC | 60 | WHT | 758 | |
| a10 | A/8001U | 70 | ORANGE | 462 | b10 | A/8001U | 50 | BLUE | 458 | c10 | A/8001U | 50 | BLUE | 536 | | | | | | br10 | DC | 60 | WHT | 796 | |
| a11 | A/8001U | 70 | ORANGE | 505 | b11 | A/8001U | 50 | BLUE | 487 | c11 | A/8001U | 50 | BLUE | 521 | | | | | | | | | | | |
| a12 | A/8001U | 70 | ORANGE | 490 | b12 | A/8001U | 50 | BLUE | 478 | c12 | A/8001U | 50 | BLUE | 502 | | | | | | | | | | | |
| a13 | A/8001U | 70 | ORANGE | 1000 | b13 | A/8001U | 50 | BLUE | 476 | c13 | A/8001U | 50 | BLUE | 730 | | | | | | | | | | | |
| a14 | A/8001U | 70 | ORANGE | 959 | b14 | A/8001U | 50 | BLUE | 470 | c14 | A/8001U | 50 | BLUE | 718 | | | | | | | | | | | |
| a15 | A/8001U | 70 | ORANGE | 962 | b15 | A/8001U | 50 | BLUE | 417 | c15 | A/8001U | 50 | BLUE | 899 | | | | | | | | | | | |
| a16 | A/8001U | 50 | BLUE | 446 | b16 | A/8001U | 50 | BLUE | 879 | c16 | A/8001U | 50 | BLUE | 933 | | | | | | | | | | | |
| a17 | A/8001U | 50 | BLUE | 859 | | | | | | | | | | | | | | | | | | | | | |
| 2a1 | A/8001U | 130 | ORANGE | 623 | 2b1 | A/8001U | 130 | BLUE | 617 | 2c1 | A/8001U | 70 | BLUE | 370 | | | | | | 2br1 | A/8001U | 70 | BLUE | 714 | |
| 2a2 | A/8001U | 130 | ORANGE | 612 | 2b2 | A/8001U | 130 | BLUE | 607 | 2c2 | A/8001U | 70 | BLUE | 242 | | | | | | 2br2 | A/8001U | 70 | BLUE | 493 | |
| 2a3 | A/8001U | 130 | ORANGE | 588 | 2b3 | A/8001U | 130 | BLUE | 576 | 2c3 | A/8001U | 70 | BLUE | 224 | | | | | | 3br1 | A/8001U | 70 | BLUE | 1161 | |
| 2a4 | A/8001U | 130 | ORANGE | 584 | 2b4 | A/8001U | 130 | BLUE | 575 | 2c4 | A/8001U | 70 | BLUE | 325 | | | | | | 3br2 | A/8001U | 70 | BLUE | 1085 | |
| 2a5 | A/8001U | 130 | ORANGE | 656 | 2b5 | A/8001U | 90 | BLUE | 649 | 2c5 | A/8001U | 90 | BLUE | 1235 | | | | | | 3br3 | A/8001U | 70 | BLUE | 1292 | |
| 2a6 | A/8001U | 90 | ORANGE | 574 | 2b6 | A/8001U | 90 | BLUE | 586 | 2c6 | A/8001U | 90 | BLUE | 1207 | | | | | | | | | | | |
| 2a7 | A/8001U | 130 | ORANGE | 1092 | 2b7 | A/8001U | 90 | BLUE | 1267 | 2c7 | A/8001U | 90 | BLUE | 955 | | | | | | | | | | | |
| 3a3 | A/8001U | 130 | ORANGE | 1076 | 3b3 | A/8001U | 130 | BLUE | 712 | 3c1 | A/8001U | 130 | BLUE | 920 | | | | | | | | | | | |
| | | | | | 2st1 | A/8001U | 70 | BLUE | 416 | 3c2 | A/8001U | 130 | BLUE | 968 | | | | | | | | | | | |
| | | | | | STB MAIN | A/8001U | 70 | BLUE | 3209 | | | | | | | | | | | | | | | | |
| 3a1 | A/8001U | 230 | ORANGE | 3067 | 3b1 | A/8001U | 190 | BLUE | 3.005 | 4c1 | A/8001U | 190 | BLUE | 2482 | | | | | | | | | | | |
| 3a2 | A/8001U | 230 | ORANGE | 3108 | 3b2 | A/8001U | 190 | BLUE | 3.065 | 4c2 | A/8001U | 130 | BLUE | 2496 | | | | | | | BRMAIN | TARAX | 200 | RED | 2.676 |
| 4a1 | A/8001U | 190 | ORANGE | 2063 | 4b1 | A/8001U | 130 | BLUE | 2.383 | | | | | | | | | | | | KNOT POINT: | | | 2.476 | |

LINES

KODE P 14

| REF. | MAT. | kg | COLOR | mm | REF. | MAT. | kg | COLOR | mm | REF. | MAT. | kg | COLOR | mm | REF. | MAT. | kg | COLOR | mm | REF. | MAT. | kg | COLOR | mm |
|----------|---------|-----|--------|------|-------------|---------|-----|-------|-------|----------|---------|-----|-------|------|----------|---------|----|-------|-----|--------------|---------|-----|-------|-------|
| A | | | | | B | | | | | C | | | | | D | | | | | BRAKE | | | | |
| a1 | A/8001U | 70 | ORANGE | 701 | b1 | A/8001U | 70 | BLUE | 693 | c1 | A/8001U | 50 | BLUE | 670 | d1 | A/8001U | 50 | BLUE | 770 | br1 | DC | 60 | WHT | 595 |
| a2 | A/8001U | 70 | ORANGE | 645 | b2 | A/8001U | 70 | BLUE | 639 | c2 | A/8001U | 50 | BLUE | 575 | d2 | A/8001U | 50 | BLUE | 770 | br2 | DC | 60 | WHT | 398 |
| a3 | A/8001U | 70 | ORANGE | 645 | b3 | A/8001U | 70 | BLUE | 639 | c3 | A/8001U | 50 | BLUE | 661 | d3 | A/8001U | 50 | BLUE | 750 | br3 | DC | 60 | WHT | 532 |
| a4 | A/8001U | 70 | ORANGE | 678 | b4 | A/8001U | 70 | BLUE | 675 | c4 | A/8001U | 50 | BLUE | 690 | d4 | A/8001U | 50 | BLUE | 694 | br4 | DC | 60 | WHT | 543 |
| a5 | A/8001U | 70 | ORANGE | 654 | b5 | A/8001U | 70 | BLUE | 640 | c5 | A/8001U | 50 | BLUE | 646 | d5 | A/8001U | 50 | BLUE | 713 | br5 | DC | 60 | WHT | 1046 |
| a6 | A/8001U | 70 | ORANGE | 616 | b6 | A/8001U | 70 | BLUE | 605 | c6 | A/8001U | 50 | BLUE | 648 | d6 | A/8001U | 50 | BLUE | 643 | br6 | DC | 60 | WHT | 1005 |
| a7 | A/8001U | 70 | ORANGE | 616 | b7 | A/8001U | 70 | BLUE | 605 | c7 | A/8001U | 50 | BLUE | 590 | d7 | A/8001U | 50 | BLUE | 842 | br7 | DC | 60 | WHT | 1039 |
| a8 | A/8001U | 70 | ORANGE | 645 | b8 | A/8001U | 70 | BLUE | 638 | c8 | A/8001U | 50 | BLUE | 689 | d8 | A/8001U | 50 | BLUE | 819 | br8 | DC | 60 | WHT | 839 |
| a9 | A/8001U | 70 | ORANGE | 559 | b9 | A/8001U | 50 | BLUE | 547 | c9 | A/8001U | 50 | BLUE | 607 | | | | | | br9 | DC | 60 | WHT | 802 |
| a10 | A/8001U | 70 | ORANGE | 490 | b10 | A/8001U | 50 | BLUE | 485 | c10 | A/8001U | 50 | BLUE | 568 | | | | | | br10 | DC | 60 | WHT | 843 |
| a11 | A/8001U | 70 | ORANGE | 534 | b11 | A/8001U | 50 | BLUE | 515 | c11 | A/8001U | 50 | BLUE | 551 | | | | | | | | | | |
| a12 | A/8001U | 70 | ORANGE | 519 | b12 | A/8001U | 50 | BLUE | 506 | c12 | A/8001U | 50 | BLUE | 531 | | | | | | | | | | |
| a13 | A/8001U | 70 | ORANGE | 1058 | b13 | A/8001U | 50 | BLUE | 503 | c13 | A/8001U | 50 | BLUE | 772 | | | | | | | | | | |
| a14 | A/8001U | 70 | ORANGE | 1015 | b14 | A/8001U | 50 | BLUE | 498 | c14 | A/8001U | 50 | BLUE | 760 | | | | | | | | | | |
| a15 | A/8001U | 70 | ORANGE | 1019 | b15 | A/8001U | 50 | BLUE | 442 | c15 | A/8001U | 50 | BLUE | 951 | | | | | | | | | | |
| a16 | A/8001U | 50 | BLUE | 472 | b16 | A/8001U | 50 | BLUE | 930 | c16 | A/8001U | 50 | BLUE | 987 | | | | | | | | | | |
| a17 | A/8001U | 50 | BLUE | 910 | | | | | | | | | | | | | | | | | | | | |
| 2a1 | A/8001U | 130 | ORANGE | 659 | 2b1 | A/8001U | 130 | BLUE | 652 | 2c1 | A/8001U | 70 | BLUE | 391 | | | | | | 2br1 | A/8001U | 70 | BLUE | 755 |
| 2a2 | A/8001U | 130 | ORANGE | 648 | 2b2 | A/8001U | 130 | BLUE | 644 | 2c2 | A/8001U | 70 | BLUE | 258 | | | | | | 2br2 | A/8001U | 70 | BLUE | 523 |
| 2a3 | A/8001U | 130 | ORANGE | 622 | 2b3 | A/8001U | 130 | BLUE | 609 | 2c3 | A/8001U | 70 | BLUE | 235 | | | | | | 3br1 | A/8001U | 70 | BLUE | 1224 |
| 2a4 | A/8001U | 130 | ORANGE | 618 | 2b4 | A/8001U | 130 | BLUE | 609 | 2c4 | A/8001U | 70 | BLUE | 344 | | | | | | 3br2 | A/8001U | 70 | BLUE | 1149 |
| 2a5 | A/8001U | 130 | ORANGE | 694 | 2b5 | A/8001U | 90 | BLUE | 687 | 2c5 | A/8001U | 90 | BLUE | 1307 | | | | | | 3br3 | A/8001U | 70 | BLUE | 1371 |
| 2a6 | A/8001U | 90 | ORANGE | 608 | 2b6 | A/8001U | 90 | BLUE | 621 | 2c6 | A/8001U | 90 | BLUE | 1277 | | | | | | | | | | |
| 2a7 | A/8001U | 130 | ORANGE | 1157 | 2b7 | A/8001U | 90 | BLUE | 1342 | 2c7 | A/8001U | 90 | BLUE | 1012 | | | | | | | | | | |
| 3a3 | A/8001U | 130 | ORANGE | 1139 | 3b3 | A/8001U | 130 | BLUE | 753 | 3c1 | A/8001U | 130 | BLUE | 971 | | | | | | | | | | |
| | | | | | 2st1 | A/8001U | 70 | BLUE | 440 | 3c2 | A/8001U | 130 | BLUE | 1027 | | | | | | | | | | |
| | | | | | STB MAIN | A/8001U | 70 | BLUE | 3433 | | | | | | | | | | | | | | | |
| 3a1 | A/8001U | 230 | ORANGE | 3275 | 3b1 | A/8001U | 190 | BLUE | 3.208 | 4c1 | A/8001U | 190 | BLUE | 2658 | | | | | | | | | | |
| 3a2 | A/8001U | 230 | ORANGE | 3322 | 3b2 | A/8001U | 190 | BLUE | 3.277 | 4c2 | A/8001U | 130 | BLUE | 2676 | | | | | | BRMAIN | TARAX | 200 | RED | 2.851 |
| 4a1 | A/8001U | 190 | ORANGE | 2219 | 4b1 | A/8001U | 130 | BLUE | 2.558 | | | | | | | | | | | KNOT POINT: | | | | 2.651 |

LINES

KODE P 16

| REF. | MAT. | kg | COLOR | mm | REF. | MAT. | kg | COLOR | mm | REF. | MAT. | kg | COLOR | mm | REF. | MAT. | kg | COLOR | mm | REF. | MAT. | kg | COLOR | mm |
|----------|---------|-----|--------|------|-------------|---------|-----|-------|-------|----------|---------|-----|-------|-------|----------|---------|----|-------|-------------|--------------|---------|-----|-------|-------|
| A | | | | | B | | | | | C | | | | | D | | | | | BRAKE | | | | |
| a1 | A/8001U | 70 | ORANGE | 748 | b1 | A/8001U | 70 | BLUE | 740 | c1 | A/8001U | 50 | BLUE | 717 | d1 | A/8001U | 50 | BLUE | 824 | br1 | DC | 60 | WHT | 645 |
| a2 | A/8001U | 70 | ORANGE | 689 | b2 | A/8001U | 70 | BLUE | 683 | c2 | A/8001U | 50 | BLUE | 616 | d2 | A/8001U | 50 | BLUE | 823 | br2 | DC | 60 | WHT | 350 |
| a3 | A/8001U | 70 | ORANGE | 689 | b3 | A/8001U | 70 | BLUE | 683 | c3 | A/8001U | 50 | BLUE | 706 | d3 | A/8001U | 50 | BLUE | 802 | br3 | DC | 60 | WHT | 604 |
| a4 | A/8001U | 70 | ORANGE | 727 | b4 | A/8001U | 70 | BLUE | 723 | c4 | A/8001U | 50 | BLUE | 739 | d4 | A/8001U | 50 | BLUE | 741 | br4 | DC | 60 | WHT | 575 |
| a5 | A/8001U | 70 | ORANGE | 698 | b5 | A/8001U | 70 | BLUE | 683 | c5 | A/8001U | 50 | BLUE | 690 | d5 | A/8001U | 50 | BLUE | 762 | br5 | DC | 60 | WHT | 594 |
| a6 | A/8001U | 70 | ORANGE | 658 | b6 | A/8001U | 70 | BLUE | 647 | c6 | A/8001U | 50 | BLUE | 694 | d6 | A/8001U | 50 | BLUE | 687 | br6 | DC | 60 | WHT | 460 |
| a7 | A/8001U | 70 | ORANGE | 658 | b7 | A/8001U | 70 | BLUE | 647 | c7 | A/8001U | 50 | BLUE | 630 | d7 | A/8001U | 50 | BLUE | 899 | br7 | DC | 60 | WHT | 473 |
| a8 | A/8001U | 70 | ORANGE | 691 | b8 | A/8001U | 70 | BLUE | 683 | c8 | A/8001U | 50 | BLUE | 737 | d8 | A/8001U | 50 | BLUE | 876 | br8 | DC | 60 | WHT | 544 |
| a9 | A/8001U | 70 | ORANGE | 598 | b9 | A/8001U | 50 | BLUE | 585 | c9 | A/8001U | 50 | BLUE | 649 | | | | | | br9 | DC | 60 | WHT | 1057 |
| a10 | A/8001U | 70 | ORANGE | 524 | b10 | A/8001U | 50 | BLUE | 519 | c10 | A/8001U | 50 | BLUE | 607 | | | | | | br10 | DC | 60 | WHT | 978 |
| a11 | A/8001U | 70 | ORANGE | 571 | b11 | A/8001U | 50 | BLUE | 550 | c11 | A/8001U | 50 | BLUE | 590 | | | | | | br11 | DC | 60 | WHT | 848 |
| a12 | A/8001U | 70 | ORANGE | 555 | b12 | A/8001U | 50 | BLUE | 541 | c12 | A/8001U | 50 | BLUE | 569 | | | | | | | | | | |
| a13 | A/8001U | 70 | ORANGE | 1130 | b13 | A/8001U | 50 | BLUE | 538 | c13 | A/8001U | 50 | BLUE | 825 | | | | | | | | | | |
| a14 | A/8001U | 70 | ORANGE | 1085 | b14 | A/8001U | 50 | BLUE | 533 | c14 | A/8001U | 50 | BLUE | 812 | | | | | | | | | | |
| a15 | A/8001U | 70 | ORANGE | 1090 | b15 | A/8001U | 50 | BLUE | 472 | c15 | A/8001U | 50 | BLUE | 1.017 | | | | | | | | | | |
| a16 | A/8001U | 50 | BLUE | 505 | b16 | A/8001U | 50 | BLUE | 994 | c16 | A/8001U | 50 | BLUE | 1055 | | | | | | | | | | |
| a17 | A/8001U | 50 | BLUE | 973 | | | | | | | | | | | | | | | | | | | | |
| 2a1 | A/8001U | 130 | ORANGE | 704 | 2b1 | A/8001U | 130 | BLUE | 697 | 2c1 | A/8001U | 70 | BLUE | 416 | | | | | | 2br1 | A/8001U | 70 | BLUE | 897 |
| 2a2 | A/8001U | 130 | ORANGE | 694 | 2b2 | A/8001U | 130 | BLUE | 689 | 2c2 | A/8001U | 70 | BLUE | 278 | | | | | | 2br2 | A/8001U | 70 | BLUE | 469 |
| 2a3 | A/8001U | 130 | ORANGE | 664 | 2b3 | A/8001U | 130 | BLUE | 651 | 2c3 | A/8001U | 70 | BLUE | 249 | | | | | | 2br3 | A/8001U | 70 | BLUE | 609 |
| 2a4 | A/8001U | 130 | ORANGE | 661 | 2b4 | A/8001U | 130 | BLUE | 652 | 2c4 | A/8001U | 70 | BLUE | 369 | | | | | | 2br4 | A/8001U | 70 | BLUE | 568 |
| 2a5 | A/8001U | 130 | ORANGE | 741 | 2b5 | A/8001U | 90 | BLUE | 734 | 2c5 | A/8001U | 90 | BLUE | 1396 | | | | | | 3br1 | A/8001U | 70 | BLUE | 1866 |
| 2a6 | A/8001U | 90 | ORANGE | 650 | 2b6 | A/8001U | 90 | BLUE | 665 | 2c6 | A/8001U | 90 | BLUE | 1365 | | | | | | 3br2 | A/8001U | 70 | BLUE | 1632 |
| 2a7 | A/8001U | 130 | ORANGE | 1238 | 2b7 | A/8001U | 90 | BLUE | 1436 | 2c7 | A/8001U | 90 | BLUE | 1083 | | | | | | 3br2 | A/8001U | 70 | BLUE | 1631 |
| 3a3 | A/8001U | 130 | ORANGE | 1218 | 3b3 | A/8001U | 130 | BLUE | 805 | 3c1 | A/8001U | 130 | BLUE | 1034 | | | | | | | | | | |
| | | | | | 2st1 | A/8001U | 70 | BLUE | 471 | 3c2 | A/8001U | 130 | BLUE | 1101 | | | | | | | | | | |
| | | | | | STB MAIN | A/8001U | 70 | BLUE | 3715 | | | | | | | | | | | | | | | |
| 3a1 | A/8001U | 230 | ORANGE | 3535 | 3b1 | A/8001U | 190 | BLUE | 3.463 | 4c1 | A/8001U | 190 | BLUE | 2878 | | | | | | | | | | |
| 3a2 | A/8001U | 230 | ORANGE | 3591 | 3b2 | A/8001U | 190 | BLUE | 3.543 | 4c2 | A/8001U | 130 | BLUE | 2914 | | | | | | BRMAIN | TARAX | 200 | RED | 2.655 |
| 4a1 | A/8001U | 190 | ORANGE | 2415 | 4b1 | A/8001U | 130 | BLUE | 2.778 | | | | | | | | | | KNOT POINT: | | | | 2.455 | |

LINES

KODE P 18

| REF. | MAT. | kg | COLOR | mm | REF. | MAT. | kg | COLOR | mm | REF. | MAT. | kg | COLOR | mm | REF. | MAT. | kg | COLOR | mm | REF. | MAT. | kg | COLOR | mm |
|----------|---------|-----|--------|------|-------------|---------|-----|-------|-------|----------|---------|-----|-------|-------|----------|---------|----|-------|-------------|--------------|---------|-----|-------|-------|
| A | | | | | B | | | | | C | | | | | D | | | | | BRAKE | | | | |
| a1 | A/8001U | 70 | ORANGE | 793 | b1 | A/8001U | 70 | BLUE | 783 | c1 | A/8001U | 50 | BLUE | 760 | d1 | A/8001U | 50 | BLUE | 874 | br1 | DC | 60 | WHT | 685 |
| a2 | A/8001U | 70 | ORANGE | 731 | b2 | A/8001U | 70 | BLUE | 724 | c2 | A/8001U | 50 | BLUE | 654 | d2 | A/8001U | 50 | BLUE | 873 | br2 | DC | 60 | WHT | 372 |
| a3 | A/8001U | 70 | ORANGE | 731 | b3 | A/8001U | 70 | BLUE | 724 | c3 | A/8001U | 50 | BLUE | 749 | d3 | A/8001U | 50 | BLUE | 850 | br3 | DC | 60 | WHT | 641 |
| a4 | A/8001U | 70 | ORANGE | 770 | b4 | A/8001U | 70 | BLUE | 767 | c4 | A/8001U | 50 | BLUE | 783 | d4 | A/8001U | 50 | BLUE | 787 | br4 | DC | 60 | WHT | 610 |
| a5 | A/8001U | 70 | ORANGE | 742 | b5 | A/8001U | 70 | BLUE | 726 | c5 | A/8001U | 50 | BLUE | 732 | d5 | A/8001U | 50 | BLUE | 807 | br5 | DC | 60 | WHT | 630 |
| a6 | A/8001U | 70 | ORANGE | 698 | b6 | A/8001U | 70 | BLUE | 685 | c6 | A/8001U | 50 | BLUE | 735 | d6 | A/8001U | 50 | BLUE | 728 | br6 | DC | 60 | WHT | 484 |
| a7 | A/8001U | 70 | ORANGE | 698 | b7 | A/8001U | 70 | BLUE | 686 | c7 | A/8001U | 50 | BLUE | 669 | d7 | A/8001U | 50 | BLUE | 960 | br7 | DC | 60 | WHT | 506 |
| a8 | A/8001U | 70 | ORANGE | 730 | b8 | A/8001U | 70 | BLUE | 721 | c8 | A/8001U | 50 | BLUE | 780 | d8 | A/8001U | 50 | BLUE | 926 | br8 | DC | 60 | WHT | 575 |
| a9 | A/8001U | 70 | ORANGE | 633 | b9 | A/8001U | 50 | BLUE | 619 | c9 | A/8001U | 50 | BLUE | 688 | | | | | | br9 | DC | 60 | WHT | 1129 |
| a10 | A/8001U | 70 | ORANGE | 551 | b10 | A/8001U | 50 | BLUE | 546 | c10 | A/8001U | 50 | BLUE | 640 | | | | | | br10 | DC | 60 | WHT | 1039 |
| a11 | A/8001U | 70 | ORANGE | 606 | b11 | A/8001U | 50 | BLUE | 585 | c11 | A/8001U | 50 | BLUE | 625 | | | | | | br11 | DC | 60 | WHT | 895 |
| a12 | A/8001U | 70 | ORANGE | 585 | b12 | A/8001U | 50 | BLUE | 571 | c12 | A/8001U | 50 | BLUE | 598 | | | | | | | | | | |
| a13 | A/8001U | 70 | ORANGE | 1201 | b13 | A/8001U | 50 | BLUE | 572 | c13 | A/8001U | 50 | BLUE | 881 | | | | | | | | | | |
| a14 | A/8001U | 70 | ORANGE | 1149 | b14 | A/8001U | 50 | BLUE | 562 | c14 | A/8001U | 50 | BLUE | 862 | | | | | | | | | | |
| a15 | A/8001U | 70 | ORANGE | 1149 | b15 | A/8001U | 50 | BLUE | 503 | c15 | A/8001U | 50 | BLUE | 1.083 | | | | | | | | | | |
| a16 | A/8001U | 50 | BLUE | 537 | b16 | A/8001U | 50 | BLUE | 1.054 | c16 | A/8001U | 50 | BLUE | 1119 | | | | | | | | | | |
| a17 | A/8001U | 50 | BLUE | 1031 | | | | | | | | | | | | | | | | | | | | |
| 2a1 | A/8001U | 130 | ORANGE | 746 | 2b1 | A/8001U | 130 | BLUE | 738 | 2c1 | A/8001U | 70 | BLUE | 441 | | | | | | 2br1 | A/8001U | 70 | BLUE | 952 |
| 2a2 | A/8001U | 130 | ORANGE | 736 | 2b2 | A/8001U | 130 | BLUE | 730 | 2c2 | A/8001U | 70 | BLUE | 294 | | | | | | 2br2 | A/8001U | 70 | BLUE | 498 |
| 2a3 | A/8001U | 130 | ORANGE | 705 | 2b3 | A/8001U | 130 | BLUE | 691 | 2c3 | A/8001U | 70 | BLUE | 267 | | | | | | 2br3 | A/8001U | 70 | BLUE | 652 |
| 2a4 | A/8001U | 130 | ORANGE | 700 | 2b4 | A/8001U | 130 | BLUE | 690 | 2c4 | A/8001U | 70 | BLUE | 389 | | | | | | 2br4 | A/8001U | 70 | BLUE | 595 |
| 2a5 | A/8001U | 130 | ORANGE | 792 | 2b5 | A/8001U | 90 | BLUE | 780 | 2c5 | A/8001U | 90 | BLUE | 1487 | | | | | | 3br1 | A/8001U | 70 | BLUE | 1990 |
| 2a6 | A/8001U | 90 | ORANGE | 686 | 2b6 | A/8001U | 90 | BLUE | 698 | 2c6 | A/8001U | 90 | BLUE | 1447 | | | | | | 3br2 | A/8001U | 70 | BLUE | 1733 |
| 2a7 | A/8001U | 130 | ORANGE | 1299 | 2b7 | A/8001U | 90 | BLUE | 1511 | 2c7 | A/8001U | 90 | BLUE | 1132 | | | | | | 3br3 | A/8001U | 70 | BLUE | 1709 |
| 3a3 | A/8001U | 130 | ORANGE | 1291 | 3b3 | A/8001U | 130 | BLUE | 857 | 3c1 | A/8001U | 130 | BLUE | 1099 | | | | | | | | | | |
| | | | | | 2st1 | A/8001U | 70 | BLUE | 501 | 3c2 | A/8001U | 130 | BLUE | 1165 | | | | | | | | | | |
| | | | | | STB MAIN | A/8001U | 70 | BLUE | 3924 | | | | | | | | | | | | | | | |
| 3a1 | A/8001U | 230 | ORANGE | 3778 | 3b1 | A/8001U | 190 | BLUE | 3.702 | 4c1 | A/8001U | 190 | BLUE | 3080 | | | | | | | | | | |
| 3a2 | A/8001U | 230 | ORANGE | 3834 | 3b2 | A/8001U | 190 | BLUE | 3.783 | 4c2 | A/8001U | 130 | BLUE | 3103 | | | | | | BRMAIN | TARAX | 200 | RED | 2.780 |
| 4a1 | A/8001U | 190 | ORANGE | 2575 | 4b1 | A/8001U | 130 | BLUE | 2.959 | | | | | | | | | | KNOT POINT: | | | | 2.580 | |

LINES

KODE P 20

| REF. | MAT. | kg | COLOR | mm | REF. | MAT. | kg | COLOR | mm | REF. | MAT. | kg | COLOR | mm | REF. | MAT. | kg | COLOR | mm | REF. | MAT. | kg | COLOR | mm |
|----------|---------|-----|--------|------|----------|---------|-----|-------|-------|----------|---------|-----|-------|-------|----------|---------|----|-------|------|--------------|---------|-----|-------|-------|
| A | | | | | B | | | | | C | | | | | D | | | | | BRAKE | | | | |
| a1 | A/8001U | 70 | ORANGE | 839 | b1 | A/8001U | 70 | BLUE | 829 | c1 | A/8001U | 50 | BLUE | 798 | d1 | A/8001U | 50 | BLUE | 917 | br1 | DC | 60 | WHT | 720 |
| a2 | A/8001U | 70 | ORANGE | 770 | b2 | A/8001U | 70 | BLUE | 762 | c2 | A/8001U | 50 | BLUE | 681 | d2 | A/8001U | 50 | BLUE | 924 | br2 | DC | 60 | WHT | 384 |
| a3 | A/8001U | 70 | ORANGE | 770 | b3 | A/8001U | 70 | BLUE | 762 | c3 | A/8001U | 50 | BLUE | 793 | d3 | A/8001U | 50 | BLUE | 895 | br3 | DC | 60 | WHT | 680 |
| a4 | A/8001U | 70 | ORANGE | 800 | b4 | A/8001U | 70 | BLUE | 793 | c4 | A/8001U | 50 | BLUE | 816 | d4 | A/8001U | 50 | BLUE | 836 | br4 | DC | 60 | WHT | 641 |
| a5 | A/8001U | 70 | ORANGE | 786 | b5 | A/8001U | 70 | BLUE | 768 | c5 | A/8001U | 50 | BLUE | 771 | d5 | A/8001U | 50 | BLUE | 852 | br5 | DC | 60 | WHT | 665 |
| a6 | A/8001U | 70 | ORANGE | 735 | b6 | A/8001U | 70 | BLUE | 720 | c6 | A/8001U | 50 | BLUE | 767 | d6 | A/8001U | 50 | BLUE | 770 | br6 | DC | 60 | WHT | 493 |
| a7 | A/8001U | 70 | ORANGE | 735 | b7 | A/8001U | 70 | BLUE | 721 | c7 | A/8001U | 50 | BLUE | 711 | d7 | A/8001U | 50 | BLUE | 1000 | br7 | DC | 60 | WHT | 532 |
| a8 | A/8001U | 70 | ORANGE | 755 | b8 | A/8001U | 70 | BLUE | 744 | c8 | A/8001U | 50 | BLUE | 814 | d8 | A/8001U | 50 | BLUE | 990 | br8 | DC | 60 | WHT | 607 |
| a9 | A/8001U | 70 | ORANGE | 670 | b9 | A/8001U | 50 | BLUE | 658 | c9 | A/8001U | 50 | BLUE | 726 | | | | | | br9 | DC | 60 | WHT | 1194 |
| a10 | A/8001U | 70 | ORANGE | 576 | b10 | A/8001U | 50 | BLUE | 574 | c10 | A/8001U | 50 | BLUE | 668 | | | | | | br10 | DC | 60 | WHT | 1104 |
| a11 | A/8001U | 70 | ORANGE | 641 | b11 | A/8001U | 50 | BLUE | 619 | c11 | A/8001U | 50 | BLUE | 660 | | | | | | br11 | DC | 60 | WHT | 931 |
| a12 | A/8001U | 70 | ORANGE | 624 | b12 | A/8001U | 50 | BLUE | 611 | c12 | A/8001U | 50 | BLUE | 638 | | | | | | | | | | |
| a13 | A/8001U | 70 | ORANGE | 1252 | b13 | A/8001U | 50 | BLUE | 595 | c13 | A/8001U | 50 | BLUE | 916 | | | | | | | | | | |
| a14 | A/8001U | 70 | ORANGE | 1203 | b14 | A/8001U | 50 | BLUE | 592 | c14 | A/8001U | 50 | BLUE | 904 | | | | | | | | | | |
| a15 | A/8001U | 70 | ORANGE | 1201 | b15 | A/8001U | 50 | BLUE | 551 | c15 | A/8001U | 50 | BLUE | 1.200 | | | | | | | | | | |
| a16 | A/8001U | 50 | BLUE | 585 | b16 | A/8001U | 50 | BLUE | 1.096 | c16 | A/8001U | 50 | BLUE | 1166 | | | | | | | | | | |
| a17 | A/8001U | 50 | BLUE | 1073 | | | | | | | | | | | | | | | | | | | | |
| <hr/> | | | | | | | | | | | | | | | | | | | | | | | | |
| 2a1 | A/8001U | 130 | ORANGE | 788 | 2b1 | A/8001U | 130 | BLUE | 779 | 2c1 | A/8001U | 70 | BLUE | 468 | | | | | | 2br1 | A/8001U | 70 | BLUE | 1013 |
| 2a2 | A/8001U | 130 | ORANGE | 769 | 2b2 | A/8001U | 130 | BLUE | 761 | 2c2 | A/8001U | 70 | BLUE | 292 | | | | | | 2br2 | A/8001U | 70 | BLUE | 507 |
| 2a3 | A/8001U | 130 | ORANGE | 745 | 2b3 | A/8001U | 130 | BLUE | 729 | 2c3 | A/8001U | 70 | BLUE | 294 | | | | | | 2br3 | A/8001U | 70 | BLUE | 702 |
| 2a4 | A/8001U | 130 | ORANGE | 730 | 2b4 | A/8001U | 130 | BLUE | 718 | 2c4 | A/8001U | 70 | BLUE | 400 | | | | | | 2br4 | A/8001U | 70 | BLUE | 611 |
| 2a5 | A/8001U | 130 | ORANGE | 839 | 2b5 | A/8001U | 90 | BLUE | 834 | 2c5 | A/8001U | 90 | BLUE | 1574 | | | | | | 3br1 | A/8001U | 70 | BLUE | 2139 |
| 2a6 | A/8001U | 90 | ORANGE | 717 | 2b6 | A/8001U | 90 | BLUE | 741 | 2c6 | A/8001U | 90 | BLUE | 1523 | | | | | | 3br2 | A/8001U | 70 | BLUE | 1813 |
| 2a7 | A/8001U | 130 | ORANGE | 1393 | 2b7 | A/8001U | 90 | BLUE | 1618 | 2c7 | A/8001U | 90 | BLUE | 1221 | | | | | | 3br3 | A/8001U | 70 | BLUE | 1774 |
| 3a3 | A/8001U | 130 | ORANGE | 1361 | 3b3 | A/8001U | 130 | BLUE | 897 | 3c1 | A/8001U | 130 | BLUE | 1172 | | | | | | | | | | |
| | | | | | 2st1 | A/8001U | 70 | BLUE | 549 | 3c2 | A/8001U | 130 | BLUE | 1208 | | | | | | | | | | |
| | | | | | STB | A/8001U | 70 | BLUE | 4039 | | | | | | | | | | | | | | | |
| | | | | | MAIN | | | | | | | | | | | | | | | | | | | |
| <hr/> | | | | | | | | | | | | | | | | | | | | | | | | |
| 3a1 | A/8001U | 230 | ORANGE | 3973 | 3b1 | A/8001U | 190 | BLUE | 3.908 | 4c1 | A/8001U | 190 | BLUE | 3245 | | | | | | | | | | |
| 3a2 | A/8001U | 230 | ORANGE | 4024 | 3b2 | A/8001U | 190 | BLUE | 3.973 | 4c2 | A/8001U | 130 | BLUE | 3203 | | | | | | BRMAIN | TARAX | 200 | RED | 4.239 |
| 4a1 | A/8001U | 190 | ORANGE | 2656 | 4b1 | A/8001U | 130 | BLUE | 3.057 | | | | | | | | | | | KNOT POINT: | | | | 4.039 |

LINES

KODE P 22

| REF. | MAT. | kg | COLOR | mm | REF. | MAT. | kg | COLOR | mm | REF. | MAT. | kg | COLOR | mm | REF. | MAT. | kg | COLOR | mm | REF. | MAT. | kg | COLOR | mm |
|----------|---------|-----|--------|------|-------------|---------|-----|-------|-------|----------|---------|-----|-------|-------|----------|---------|----|-------|------|--------------|---------|-----|-------|-------|
| A | | | | | B | | | | | C | | | | | D | | | | | BRAKE | | | | |
| a1 | A/8001U | 70 | ORANGE | 879 | b1 | A/8001U | 70 | BLUE | 868 | c1 | A/8001U | 50 | BLUE | 837 | d1 | A/8001U | 50 | BLUE | 962 | br1 | DC | 60 | WHT | 755 |
| a2 | A/8001U | 70 | ORANGE | 808 | b2 | A/8001U | 70 | BLUE | 799 | c2 | A/8001U | 50 | BLUE | 716 | d2 | A/8001U | 50 | BLUE | 969 | br2 | DC | 60 | WHT | 403 |
| a3 | A/8001U | 70 | ORANGE | 808 | b3 | A/8001U | 70 | BLUE | 799 | c3 | A/8001U | 50 | BLUE | 832 | d3 | A/8001U | 50 | BLUE | 939 | br3 | DC | 60 | WHT | 712 |
| a4 | A/8001U | 70 | ORANGE | 840 | b4 | A/8001U | 70 | BLUE | 833 | c4 | A/8001U | 50 | BLUE | 857 | d4 | A/8001U | 50 | BLUE | 877 | br4 | DC | 60 | WHT | 673 |
| a5 | A/8001U | 70 | ORANGE | 824 | b5 | A/8001U | 70 | BLUE | 805 | c5 | A/8001U | 50 | BLUE | 808 | d5 | A/8001U | 50 | BLUE | 893 | br5 | DC | 60 | WHT | 698 |
| a6 | A/8001U | 70 | ORANGE | 771 | b6 | A/8001U | 70 | BLUE | 755 | c6 | A/8001U | 50 | BLUE | 806 | d6 | A/8001U | 50 | BLUE | 807 | br6 | DC | 60 | WHT | 518 |
| a7 | A/8001U | 70 | ORANGE | 771 | b7 | A/8001U | 70 | BLUE | 756 | c7 | A/8001U | 50 | BLUE | 745 | d7 | A/8001U | 50 | BLUE | 1049 | br7 | DC | 60 | WHT | 557 |
| a8 | A/8001U | 70 | ORANGE | 793 | b8 | A/8001U | 70 | BLUE | 781 | c8 | A/8001U | 50 | BLUE | 854 | d8 | A/8001U | 50 | BLUE | 1040 | br8 | DC | 60 | WHT | 637 |
| a9 | A/8001U | 70 | ORANGE | 702 | b9 | A/8001U | 50 | BLUE | 690 | c9 | A/8001U | 50 | BLUE | 761 | | | | | | br9 | DC | 60 | WHT | 1251 |
| a10 | A/8001U | 70 | ORANGE | 604 | b10 | A/8001U | 50 | BLUE | 602 | c10 | A/8001U | 50 | BLUE | 701 | | | | | | br10 | DC | 60 | WHT | 1159 |
| a11 | A/8001U | 70 | ORANGE | 672 | b11 | A/8001U | 50 | BLUE | 650 | c11 | A/8001U | 50 | BLUE | 692 | | | | | | br11 | DC | 60 | WHT | 977 |
| a12 | A/8001U | 70 | ORANGE | 655 | b12 | A/8001U | 50 | BLUE | 641 | c12 | A/8001U | 50 | BLUE | 670 | | | | | | | | | | |
| a13 | A/8001U | 70 | ORANGE | 1313 | b13 | A/8001U | 50 | BLUE | 624 | c13 | A/8001U | 50 | BLUE | 960 | | | | | | | | | | |
| a14 | A/8001U | 70 | ORANGE | 1262 | b14 | A/8001U | 50 | BLUE | 621 | c14 | A/8001U | 50 | BLUE | 948 | | | | | | | | | | |
| a15 | A/8001U | 70 | ORANGE | 1260 | b15 | A/8001U | 50 | BLUE | 578 | c15 | A/8001U | 50 | BLUE | 1.259 | | | | | | | | | | |
| a16 | A/8001U | 50 | BLUE | 614 | b16 | A/8001U | 50 | BLUE | 1.150 | c16 | A/8001U | 50 | BLUE | 1222 | | | | | | | | | | |
| a17 | A/8001U | 50 | BLUE | 1126 | | | | | | | | | | | | | | | | | | | | |
| 2a1 | A/8001U | 130 | ORANGE | 826 | 2b1 | A/8001U | 130 | BLUE | 817 | 2c1 | A/8001U | 70 | BLUE | 490 | | | | | | 2br1 | A/8001U | 70 | BLUE | 1062 |
| 2a2 | A/8001U | 130 | ORANGE | 807 | 2b2 | A/8001U | 130 | BLUE | 799 | 2c2 | A/8001U | 70 | BLUE | 307 | | | | | | 2br2 | A/8001U | 70 | BLUE | 533 |
| 2a3 | A/8001U | 130 | ORANGE | 781 | 2b3 | A/8001U | 130 | BLUE | 764 | 2c3 | A/8001U | 70 | BLUE | 307 | | | | | | 2br3 | A/8001U | 70 | BLUE | 735 |
| 2a4 | A/8001U | 130 | ORANGE | 767 | 2b4 | A/8001U | 130 | BLUE | 754 | 2c4 | A/8001U | 70 | BLUE | 420 | | | | | | 2br4 | A/8001U | 70 | BLUE | 642 |
| 2a5 | A/8001U | 130 | ORANGE | 879 | 2b5 | A/8001U | 90 | BLUE | 874 | 2c5 | A/8001U | 90 | BLUE | 1651 | | | | | | 3br1 | A/8001U | 70 | BLUE | 2240 |
| 2a6 | A/8001U | 90 | ORANGE | 752 | 2b6 | A/8001U | 90 | BLUE | 778 | 2c6 | A/8001U | 90 | BLUE | 1598 | | | | | | 3br2 | A/8001U | 70 | BLUE | 1902 |
| 2a7 | A/8001U | 130 | ORANGE | 1461 | 2b7 | A/8001U | 90 | BLUE | 1698 | 2c7 | A/8001U | 90 | BLUE | 1281 | | | | | | 3br3 | A/8001U | 70 | BLUE | 1865 |
| 3a3 | A/8001U | 130 | ORANGE | 1427 | 3b3 | A/8001U | 130 | BLUE | 941 | 3c1 | A/8001U | 130 | BLUE | 1239 | | | | | | | | | | |
| | | | | | 2st1 | A/8001U | 70 | BLUE | 575 | 3c2 | A/8001U | 130 | BLUE | 1269 | | | | | | | | | | |
| | | | | | STB MAIN | A/8001U | 70 | BLUE | 4268 | | | | | | | | | | | | | | | |
| 3a1 | A/8001U | 230 | ORANGE | 4209 | 3b1 | A/8001U | 190 | BLUE | 4.135 | 4c1 | A/8001U | 190 | BLUE | 3430 | | | | | | | | | | |
| 3a2 | A/8001U | 230 | ORANGE | 4249 | 3b2 | A/8001U | 190 | BLUE | 4.195 | 4c2 | A/8001U | 130 | BLUE | 3388 | | | | | | BRMAIN | TARAX | 200 | RED | 3.107 |
| 4a1 | A/8001U | 190 | ORANGE | 2817 | 4b1 | A/8001U | 130 | BLUE | 3.237 | | | | | | | | | | | KNOT POINT: | | | | 2.907 |

LINES

KODE P 24

| REF. | MAT. | kg | COLOR | mm | REF. | MAT. | kg | COLOR | mm | REF. | MAT. | kg | COLOR | mm | REF. | MAT. | kg | COLOR | mm | REF. | MAT. | kg | COLOR | mm |
|----------|---------|-----|--------|------|-------------|---------|-----|-------|-------|----------|---------|-----|-------|-------|----------|---------|----|-------|-------------|--------------|---------|-----|-------|-------|
| A | | | | | B | | | | | C | | | | | D | | | | | BRAKE | | | | |
| a1 | A/8001U | 70 | ORANGE | 918 | b1 | A/8001U | 70 | BLUE | 906 | c1 | A/8001U | 50 | BLUE | 874 | d1 | A/8001U | 50 | BLUE | 1005 | br1 | DC | 60 | WHT | 789 |
| a2 | A/8001U | 70 | ORANGE | 844 | b2 | A/8001U | 70 | BLUE | 835 | c2 | A/8001U | 50 | BLUE | 749 | d2 | A/8001U | 50 | BLUE | 1012 | br2 | DC | 60 | WHT | 422 |
| a3 | A/8001U | 70 | ORANGE | 844 | b3 | A/8001U | 70 | BLUE | 835 | c3 | A/8001U | 50 | BLUE | 869 | d3 | A/8001U | 50 | BLUE | 981 | br3 | DC | 60 | WHT | 744 |
| a4 | A/8001U | 70 | ORANGE | 878 | b4 | A/8001U | 70 | BLUE | 872 | c4 | A/8001U | 50 | BLUE | 896 | d4 | A/8001U | 50 | BLUE | 915 | br4 | DC | 60 | WHT | 703 |
| a5 | A/8001U | 70 | ORANGE | 860 | b5 | A/8001U | 70 | BLUE | 840 | c5 | A/8001U | 50 | BLUE | 844 | d5 | A/8001U | 50 | BLUE | 933 | br5 | DC | 60 | WHT | 729 |
| a6 | A/8001U | 70 | ORANGE | 805 | b6 | A/8001U | 70 | BLUE | 789 | c6 | A/8001U | 50 | BLUE | 843 | d6 | A/8001U | 50 | BLUE | 843 | br6 | DC | 60 | WHT | 542 |
| a7 | A/8001U | 70 | ORANGE | 806 | b7 | A/8001U | 70 | BLUE | 790 | c7 | A/8001U | 50 | BLUE | 778 | d7 | A/8001U | 50 | BLUE | 1095 | br7 | DC | 60 | WHT | 582 |
| a8 | A/8001U | 70 | ORANGE | 828 | b8 | A/8001U | 70 | BLUE | 816 | c8 | A/8001U | 50 | BLUE | 892 | d8 | A/8001U | 50 | BLUE | 1087 | br8 | DC | 60 | WHT | 665 |
| a9 | A/8001U | 70 | ORANGE | 734 | b9 | A/8001U | 50 | BLUE | 721 | c9 | A/8001U | 50 | BLUE | 795 | | | | | | br9 | DC | 60 | WHT | 1306 |
| a10 | A/8001U | 70 | ORANGE | 631 | b10 | A/8001U | 50 | BLUE | 630 | c10 | A/8001U | 50 | BLUE | 733 | | | | | | br10 | DC | 60 | WHT | 1210 |
| a11 | A/8001U | 70 | ORANGE | 702 | b11 | A/8001U | 50 | BLUE | 678 | c11 | A/8001U | 50 | BLUE | 723 | | | | | | br11 | DC | 60 | WHT | 1021 |
| a12 | A/8001U | 70 | ORANGE | 684 | b12 | A/8001U | 50 | BLUE | 670 | c12 | A/8001U | 50 | BLUE | 700 | | | | | | | | | | |
| a13 | A/8001U | 70 | ORANGE | 1372 | b13 | A/8001U | 50 | BLUE | 652 | c13 | A/8001U | 50 | BLUE | 1003 | | | | | | | | | | |
| a14 | A/8001U | 70 | ORANGE | 1318 | b14 | A/8001U | 50 | BLUE | 648 | c14 | A/8001U | 50 | BLUE | 990 | | | | | | | | | | |
| a15 | A/8001U | 70 | ORANGE | 1317 | b15 | A/8001U | 50 | BLUE | 603 | c15 | A/8001U | 50 | BLUE | 1.316 | | | | | | | | | | |
| a16 | A/8001U | 50 | BLUE | 641 | b16 | A/8001U | 50 | BLUE | 1.201 | c16 | A/8001U | 50 | BLUE | 1276 | | | | | | | | | | |
| a17 | A/8001U | 50 | BLUE | 1176 | | | | | | | | | | | | | | | | | | | | |
| <hr/> | | | | | | | | | | | | | | | | | | | | | | | | |
| 2a1 | A/8001U | 130 | ORANGE | 863 | 2b1 | A/8001U | 130 | BLUE | 853 | 2c1 | A/8001U | 70 | BLUE | 511 | | | | | | 2br1 | A/8001U | 70 | BLUE | 1108 |
| 2a2 | A/8001U | 130 | ORANGE | 843 | 2b2 | A/8001U | 130 | BLUE | 836 | 2c2 | A/8001U | 70 | BLUE | 322 | | | | | | 2br2 | A/8001U | 70 | BLUE | 558 |
| 2a3 | A/8001U | 130 | ORANGE | 815 | 2b3 | A/8001U | 130 | BLUE | 798 | 2c3 | A/8001U | 70 | BLUE | 319 | | | | | | 2br3 | A/8001U | 70 | BLUE | 766 |
| 2a4 | A/8001U | 130 | ORANGE | 801 | 2b4 | A/8001U | 130 | BLUE | 788 | 2c4 | A/8001U | 70 | BLUE | 439 | | | | | | 2br4 | A/8001U | 70 | BLUE | 672 |
| 2a5 | A/8001U | 130 | ORANGE | 918 | 2b5 | A/8001U | 90 | BLUE | 913 | 2c5 | A/8001U | 90 | BLUE | 1724 | | | | | | 3br1 | A/8001U | 70 | BLUE | 2336 |
| 2a6 | A/8001U | 90 | ORANGE | 786 | 2b6 | A/8001U | 90 | BLUE | 813 | 2c6 | A/8001U | 90 | BLUE | 1669 | | | | | | 3br2 | A/8001U | 70 | BLUE | 1987 |
| 2a7 | A/8001U | 130 | ORANGE | 1527 | 2b7 | A/8001U | 90 | BLUE | 1775 | 2c7 | A/8001U | 90 | BLUE | 1339 | | | | | | 3br3 | A/8001U | 70 | BLUE | 1952 |
| 3a3 | A/8001U | 130 | ORANGE | 1491 | 3b3 | A/8001U | 130 | BLUE | 982 | 3c1 | A/8001U | 130 | BLUE | 1292 | | | | | | | | | | |
| | | | | | 2st1 | A/8001U | 70 | BLUE | 601 | 3c2 | A/8001U | 130 | BLUE | 1328 | | | | | | | | | | |
| | | | | | STB MAIN | A/8001U | 70 | BLUE | 4487 | | | | | | | | | | | | | | | |
| <hr/> | | | | | | | | | | | | | | | | | | | | | | | | |
| 3a1 | A/8001U | 230 | ORANGE | 4419 | 3b1 | A/8001U | 190 | BLUE | 4.341 | 4c1 | A/8001U | 190 | BLUE | 3606 | | | | | | | | | | |
| 3a2 | A/8001U | 230 | ORANGE | 4463 | 3b2 | A/8001U | 190 | BLUE | 4.407 | 4c2 | A/8001U | 130 | BLUE | 3567 | | | | | | BRMAIN | TARAX | 200 | RED | 4.687 |
| 4a1 | A/8001U | 190 | ORANGE | 2970 | 4b1 | A/8001U | 130 | BLUE | 3.409 | | | | | | | | | | KNOT POINT: | | | | 4.487 | |

LINES

KODE P 26

| REF. | MAT. | kg | COLOR | mm | REF. | MAT. | kg | COLOR | mm | REF. | MAT. | kg | COLOR | mm | REF. | MAT. | kg | COLOR | mm | REF. | MAT. | kg | COLOR | mm | | |
|----------|---------|-----|--------|------|-------------|---------|-----|-------|-------|----------|---------|-----|-------|-------|----------|---------|----|-------|------|--------------|------|-------------|---------|------|-------|-------|
| A | | | | | B | | | | | C | | | | | D | | | | | BRAKE | | | | | | |
| a1 | A/8001U | 70 | ORANGE | 963 | b1 | A/8001U | 70 | BLUE | 951 | c1 | A/8001U | 50 | BLUE | 919 | d1 | A/8001U | 50 | BLUE | 1056 | br1 | DC | 60 | WHT | 829 | | |
| a2 | A/8001U | 70 | ORANGE | 887 | b2 | A/8001U | 70 | BLUE | 877 | c2 | A/8001U | 50 | BLUE | 788 | d2 | A/8001U | 50 | BLUE | 1063 | br2 | DC | 60 | WHT | 445 | | |
| a3 | A/8001U | 70 | ORANGE | 887 | b3 | A/8001U | 70 | BLUE | 877 | c3 | A/8001U | 50 | BLUE | 913 | d3 | A/8001U | 50 | BLUE | 1031 | br3 | DC | 60 | WHT | 781 | | |
| a4 | A/8001U | 70 | ORANGE | 924 | b4 | A/8001U | 70 | BLUE | 917 | c4 | A/8001U | 50 | BLUE | 942 | d4 | A/8001U | 50 | BLUE | 961 | br4 | DC | 60 | WHT | 740 | | |
| a5 | A/8001U | 70 | ORANGE | 903 | b5 | A/8001U | 70 | BLUE | 882 | c5 | A/8001U | 50 | BLUE | 887 | d5 | A/8001U | 50 | BLUE | 981 | br5 | DC | 60 | WHT | 766 | | |
| a6 | A/8001U | 70 | ORANGE | 846 | b6 | A/8001U | 70 | BLUE | 829 | c6 | A/8001U | 50 | BLUE | 886 | d6 | A/8001U | 50 | BLUE | 886 | br6 | DC | 60 | WHT | 570 | | |
| a7 | A/8001U | 70 | ORANGE | 847 | b7 | A/8001U | 70 | BLUE | 830 | c7 | A/8001U | 50 | BLUE | 817 | d7 | A/8001U | 50 | BLUE | 1150 | br7 | DC | 60 | WHT | 610 | | |
| a8 | A/8001U | 70 | ORANGE | 871 | b8 | A/8001U | 70 | BLUE | 859 | c8 | A/8001U | 50 | BLUE | 938 | d8 | A/8001U | 50 | BLUE | 1143 | br8 | DC | 60 | WHT | 699 | | |
| a9 | A/8001U | 70 | ORANGE | 771 | b9 | A/8001U | 50 | BLUE | 758 | c9 | A/8001U | 50 | BLUE | 836 | | | | | | | br9 | DC | 60 | WHT | 1371 | |
| a10 | A/8001U | 70 | ORANGE | 664 | b10 | A/8001U | 50 | BLUE | 662 | c10 | A/8001U | 50 | BLUE | 771 | | | | | | | br10 | DC | 60 | WHT | 1271 | |
| a11 | A/8001U | 70 | ORANGE | 738 | b11 | A/8001U | 50 | BLUE | 713 | c11 | A/8001U | 50 | BLUE | 760 | | | | | | | br11 | DC | 60 | WHT | 1073 | |
| a12 | A/8001U | 70 | ORANGE | 719 | b12 | A/8001U | 50 | BLUE | 704 | c12 | A/8001U | 50 | BLUE | 736 | | | | | | | | | | | | |
| a13 | A/8001U | 70 | ORANGE | 1441 | b13 | A/8001U | 50 | BLUE | 685 | c13 | A/8001U | 50 | BLUE | 1053 | | | | | | | | | | | | |
| a14 | A/8001U | 70 | ORANGE | 1386 | b14 | A/8001U | 50 | BLUE | 682 | c14 | A/8001U | 50 | BLUE | 1040 | | | | | | | | | | | | |
| a15 | A/8001U | 70 | ORANGE | 1384 | b15 | A/8001U | 50 | BLUE | 634 | c15 | A/8001U | 50 | BLUE | 1.384 | | | | | | | | | | | | |
| a16 | A/8001U | 50 | BLUE | 674 | b16 | A/8001U | 50 | BLUE | 1.262 | c16 | A/8001U | 50 | BLUE | 1341 | | | | | | | | | | | | |
| a17 | A/8001U | 50 | BLUE | 1236 | | | | | | | | | | | | | | | | | | | | | | |
| 2a1 | A/8001U | 130 | ORANGE | 906 | 2b1 | A/8001U | 130 | BLUE | 895 | 2c1 | A/8001U | 70 | BLUE | 536 | | | | | | | 2br1 | A/8001U | 70 | BLUE | 1163 | |
| 2a2 | A/8001U | 130 | ORANGE | 887 | 2b2 | A/8001U | 130 | BLUE | 879 | 2c2 | A/8001U | 70 | BLUE | 340 | | | | | | | | 2br2 | A/8001U | 70 | BLUE | 588 |
| 2a3 | A/8001U | 130 | ORANGE | 856 | 2b3 | A/8001U | 130 | BLUE | 838 | 2c3 | A/8001U | 70 | BLUE | 333 | | | | | | | | 2br3 | A/8001U | 70 | BLUE | 804 |
| 2a4 | A/8001U | 130 | ORANGE | 842 | 2b4 | A/8001U | 130 | BLUE | 828 | 2c4 | A/8001U | 70 | BLUE | 462 | | | | | | | | 2br4 | A/8001U | 70 | BLUE | 707 |
| 2a5 | A/8001U | 130 | ORANGE | 964 | 2b5 | A/8001U | 90 | BLUE | 959 | 2c5 | A/8001U | 90 | BLUE | 1811 | | | | | | | | 3br1 | A/8001U | 70 | BLUE | 2451 |
| 2a6 | A/8001U | 90 | ORANGE | 826 | 2b6 | A/8001U | 90 | BLUE | 855 | 2c6 | A/8001U | 90 | BLUE | 1753 | | | | | | | | 3br2 | A/8001U | 70 | BLUE | 2089 |
| 2a7 | A/8001U | 130 | ORANGE | 1606 | 2b7 | A/8001U | 90 | BLUE | 1866 | 2c7 | A/8001U | 90 | BLUE | 1408 | | | | | | | | 3br3 | A/8001U | 70 | BLUE | 2055 |
| 3a3 | A/8001U | 130 | ORANGE | 1566 | 3b3 | A/8001U | 130 | BLUE | 1032 | 3c1 | A/8001U | 130 | BLUE | 1355 | | | | | | | | | | | | |
| | | | | | 2st1 | A/8001U | 70 | BLUE | 632 | 3c2 | A/8001U | 130 | BLUE | 1398 | | | | | | | | | | | | |
| | | | | | STB MAIN | A/8001U | 70 | BLUE | 4748 | | | | | | | | | | | | | | | | | |
| 3a1 | A/8001U | 230 | ORANGE | 4669 | 3b1 | A/8001U | 190 | BLUE | 4.586 | 4c1 | A/8001U | 190 | BLUE | 3817 | | | | | | | | | | | | |
| 3a2 | A/8001U | 230 | ORANGE | 4719 | 3b2 | A/8001U | 190 | BLUE | 4.660 | 4c2 | A/8001U | 130 | BLUE | 3778 | | | | | | | | BRMAIN | TARAX | 200 | RED | 3.398 |
| 4a1 | A/8001U | 190 | ORANGE | 3152 | 4b1 | A/8001U | 130 | BLUE | 3.614 | | | | | | | | | | | | | KNOT POINT: | | | 3.198 | |

KODE P - 12

LINES HEIGHT + RISER mm

| | A | B | C | D | br |
|----|------|------|------|------|------|
| 1 | 4829 | 4751 | 4871 | 4966 | 4972 |
| 2 | 4775 | 4698 | 4780 | 4838 | 4784 |
| 3 | 4763 | 4689 | 4735 | 4849 | 4691 |
| 4 | 4794 | 4721 | 4761 | 4896 | 4700 |
| 5 | 4790 | 4721 | 4750 | 4878 | 4609 |
| 6 | 4752 | 4686 | 4751 | 4783 | 4569 |
| 7 | 4748 | 4685 | 4798 | 4720 | 4601 |
| 8 | 4775 | 4715 | 4890 | 4698 | 4620 |
| 9 | 4789 | 4728 | 4778 | | 4587 |
| 10 | 4724 | 4669 | 4741 | | 4666 |
| 11 | 4685 | 4635 | 4697 | | |
| 12 | 4671 | 4626 | 4678 | | |
| 13 | 4631 | 4602 | 4654 | | |
| 14 | 4590 | 4596 | 4642 | | |
| 15 | 4593 | 4520 | 4591 | | |
| 16 | 4548 | 4570 | 4625 | | |
| 17 | 4551 | | | | |

KODE P - 14

LINES HEIGHT + RISER mm

| | A | B | C | D | br |
|----|------|------|------|------|------|
| 1 | 5110 | 5027 | 5155 | 5255 | 5285 |
| 2 | 5053 | 4972 | 5060 | 5123 | 5087 |
| 3 | 5043 | 4964 | 5013 | 5136 | 4990 |
| 4 | 5076 | 4999 | 5043 | 5189 | 5000 |
| 5 | 5073 | 5000 | 5032 | 5169 | 4905 |
| 6 | 5034 | 4965 | 5034 | 5069 | 4864 |
| 7 | 5031 | 4965 | 5085 | 5003 | 4899 |
| 8 | 5060 | 4997 | 5183 | 4981 | 4920 |
| 9 | 5077 | 5012 | 5063 | | 4886 |
| 10 | 5008 | 4950 | 5024 | | 4973 |
| 11 | 4968 | 4914 | 4978 | | |
| 12 | 4953 | 4905 | 4958 | | |
| 13 | 4910 | 4880 | 4933 | | |
| 14 | 4867 | 4875 | 4921 | | |
| 15 | 4871 | 4793 | 4868 | | |
| 16 | 4823 | 4846 | 4904 | | |
| 17 | 4826 | | | | |

KODE P - 16

LINES HEIGHT + RISER mm

| | A | B | C | D | br |
|----|------|------|------|------|------|
| 1 | 5462 | 5372 | 5512 | 5619 | 5923 |
| 2 | 5403 | 5315 | 5411 | 5479 | 5627 |
| 3 | 5393 | 5308 | 5362 | 5497 | 5453 |
| 4 | 5430 | 5348 | 5395 | 5556 | 5425 |
| 5 | 5428 | 5350 | 5385 | 5546 | 5349 |
| 6 | 5388 | 5314 | 5389 | 5440 | 5215 |
| 7 | 5386 | 5315 | 5444 | 5371 | 5187 |
| 8 | 5418 | 5351 | 5551 | 5347 | 5258 |
| 9 | 5438 | 5368 | 5433 | | 5206 |
| 10 | 5364 | 5302 | 5391 | | 5127 |
| 11 | 5321 | 5265 | 5343 | | 5046 |
| 12 | 5306 | 5256 | 5322 | | |
| 13 | 5260 | 5228 | 5296 | | |
| 14 | 5215 | 5223 | 5283 | | |
| 15 | 5219 | 5136 | 5215 | | |
| 16 | 5169 | 5193 | 5254 | | |
| 17 | 5171 | | | | |

KODE P - 18

LINES HEIGHT + RISER mm

| | A | B | C | D | br |
|----|------|------|------|------|------|
| 1 | 5794 | 5701 | 5849 | 5962 | 6266 |
| 2 | 5732 | 5642 | 5743 | 5815 | 5953 |
| 3 | 5722 | 5634 | 5691 | 5832 | 5768 |
| 4 | 5761 | 5677 | 5725 | 5891 | 5737 |
| 5 | 5758 | 5678 | 5713 | 5874 | 5654 |
| 6 | 5713 | 5637 | 5716 | 5754 | 5508 |
| 7 | 5709 | 5637 | 5772 | 5672 | 5473 |
| 8 | 5741 | 5672 | 5883 | 5637 | 5542 |
| 9 | 5759 | 5688 | 5754 | | 5481 |
| 10 | 5677 | 5615 | 5707 | | 5391 |
| 11 | 5628 | 5571 | 5651 | | 5303 |
| 12 | 5607 | 5557 | 5624 | | |
| 13 | 5553 | 5523 | 5592 | | |
| 14 | 5501 | 5513 | 5574 | | |
| 15 | 5501 | 5411 | 5492 | | |
| 16 | 5445 | 5466 | 5527 | | |
| 17 | 5443 | | | | |

KODE P - 20

LINES HEIGHT + RISER mm

| | A | B | C | D | br |
|----|------|------|------|------|------|
| 1 | 6076 | 5986 | 6148 | 6267 | 6639 |
| 2 | 6007 | 5918 | 6031 | 6098 | 6304 |
| 3 | 5987 | 5901 | 5967 | 6107 | 6093 |
| 4 | 6016 | 5932 | 5990 | 6154 | 6055 |
| 5 | 6025 | 5939 | 5983 | 6102 | 5947 |
| 6 | 5973 | 5891 | 5980 | 5969 | 5775 |
| 7 | 5960 | 5881 | 6029 | 5897 | 5723 |
| 8 | 5980 | 5904 | 6132 | 5887 | 5798 |
| 9 | 5987 | 5909 | 5976 | | 5738 |
| 10 | 5893 | 5825 | 5919 | | 5649 |
| 11 | 5838 | 5778 | 5859 | | 5538 |
| 12 | 5822 | 5769 | 5837 | | |
| 13 | 5772 | 5742 | 5813 | | |
| 14 | 5723 | 5738 | 5801 | | |
| 15 | 5721 | 5613 | 5718 | | |
| 16 | 5647 | 5614 | 5684 | | |
| 17 | 5592 | | | | |

KODE P - 22

LINES HEIGHT + RISER mm

| | A | B | C | D | br |
|----|------|------|------|------|------|
| 1 | 6390 | 6289 | 6461 | 6586 | 7022 |
| 2 | 6319 | 6220 | 6340 | 6410 | 6671 |
| 3 | 6299 | 6203 | 6273 | 6410 | 6451 |
| 4 | 6331 | 6237 | 6298 | 6461 | 6412 |
| 5 | 6323 | 6233 | 6279 | 6405 | 6300 |
| 6 | 6270 | 6183 | 6277 | 6266 | 6120 |
| 7 | 6256 | 6174 | 6329 | 6191 | 6067 |
| 8 | 6278 | 6198 | 6438 | 6182 | 6146 |
| 9 | 6287 | 6205 | 6273 | | 6084 |
| 10 | 6188 | 6117 | 6213 | | 5992 |
| 11 | 6131 | 6068 | 6151 | | 5876 |
| 12 | 6114 | 6059 | 6128 | | |
| 13 | 6063 | 6031 | 6103 | | |
| 14 | 6011 | 6027 | 6090 | | |
| 15 | 6010 | 5895 | 6007 | | |
| 16 | 5932 | 5897 | 5970 | | |
| 17 | 5873 | | | | |

KODE P - 24

LINES HEIGHT + RISER mm

| | A | B | C | D | br |
|----|------|------|------|------|------|
| 1 | 6674 | 6568 | 6748 | 6879 | 7310 |
| 2 | 6600 | 6497 | 6623 | 6697 | 6943 |
| 3 | 6581 | 6480 | 6554 | 6699 | 6715 |
| 4 | 6615 | 6517 | 6581 | 6754 | 6675 |
| 5 | 6608 | 6514 | 6562 | 6697 | 6559 |
| 6 | 6553 | 6462 | 6560 | 6552 | 6372 |
| 7 | 6540 | 6453 | 6616 | 6474 | 6318 |
| 8 | 6562 | 6480 | 6731 | 6466 | 6401 |
| 9 | 6573 | 6488 | 6558 | | 6337 |
| 10 | 6471 | 6396 | 6496 | | 6242 |
| 11 | 6411 | 6345 | 6432 | | 6123 |
| 12 | 6394 | 6337 | 6408 | | |
| 13 | 6340 | 6307 | 6382 | | |
| 14 | 6287 | 6304 | 6369 | | |
| 15 | 6285 | 6166 | 6282 | | |
| 16 | 6203 | 6167 | 6243 | | |
| 17 | 6142 | | | | |

KODE P - 26

LINES HEIGHT + RISER mm

| | A | B | C | D | br |
|----|------|------|------|------|------|
| 1 | 7013 | 6901 | 7092 | 7229 | 7700 |
| 2 | 6937 | 6828 | 6961 | 7040 | 7316 |
| 3 | 6917 | 6811 | 6890 | 7044 | 7077 |
| 4 | 6955 | 6851 | 6919 | 7103 | 7036 |
| 5 | 6948 | 6849 | 6900 | 7042 | 6916 |
| 6 | 6891 | 6796 | 6899 | 6891 | 6720 |
| 7 | 6878 | 6787 | 6959 | 6810 | 6664 |
| 8 | 6902 | 6815 | 7080 | 6803 | 6753 |
| 9 | 6915 | 6825 | 6897 | | 6687 |
| 10 | 6808 | 6729 | 6832 | | 6587 |
| 11 | 6746 | 6676 | 6765 | | 6464 |
| 12 | 6727 | 6667 | 6741 | | |
| 13 | 6671 | 6636 | 6713 | | |
| 14 | 6615 | 6633 | 6700 | | |
| 15 | 6614 | 6488 | 6611 | | |
| 16 | 6528 | 6489 | 6568 | | |
| 17 | 6463 | | | | |

SUSPENSION

| | | | | | | | | |
|-------------------------------------|--------------|---------|----------|----------|--------|----------|-----------|-----------|
| MATERIAL CODE | | DC | A-8001/U | A-8001/U | 8001/U | A-8001/U | A-8001/U | TARAX |
| STRENGTH CODE | | 060 | 050 | 070 | 90 | 130 | 230 | 200 |
| DIAMETER m/m | ∅ | 0,6 | 0,5 | 0,7 | 0,8 | 0,9 | 1,1 x 1,4 | 1,7 |
| CORE MATERIAL | | DYNEEMA | ARAMID | ARAMID | ARAMID | ARAMID | ARAMID | DYNEEMA |
| SLEEVE MATERIAL | | NO | NO | NO | NO | NO | NO | POLYESTER |
| WEIGHT G/M | TOTAL | 0,24 | 0,3 | 0,4 | 0,5 | 0,8 | 1,4 | 2 |
| BREAKING STRENGTH daN | MINIMUM | 60 | 50 | 70 | 90 | 130 | 230 | 200 |
| | MAXIMUM | 84 | 59 | 78 | 110 | 144 | 255 | |
| STRENGTH AFTER | | | | | | | | |
| 5.000 BENDING | TEST EN | 74 | 26 | 39 | 49 | 88 | 69 | |
| CYCLES | | | | | | | | |
| ELONGATION AT | 5 daN en % | | 0,4 | 0,5 | 0,4 | 0,4 | 0,3 | 0,1-0,3 |
| | 10 daN en % | 0,43 | 0,7 | 0,7 | 0,6 | 0,6 | 0,5 | 0,2-0,6 |
| | 15 daN en % | | 1,1 | 1 | 0,8 | 0,8 | 0,6 | 0,3-0,7 |
| | 20 daN en % | | 1,5 | 1,3 | 1 | 0,9 | 0,7 | 0,3-0,9 |
| | 25 daN en % | | 1,9 | 1,5 | 1,3 | 1 | 0,8 | 0,4-1 |
| | 30 daN en % | 1,2 | 3,3 | 2,8 | 2,3 | 1,8 | 1,3 | |
| | 75 daN en % | | | 3,7 | 3,2 | 3,1 | 2,3 | 0,8-1,7 |
| | 100 daN en % | | | | | | 3,6 | 1,2-2 |
| | 125 daN en % | | | | | | 3,3 | |
| | 150 daN en % | | | | | | 3,6 | 1,6-2,4 |
| | 175 daN en % | | | | | | | |
| | 200 daN en % | | | | | | | 2-2,8 |
| ELONGATION MAX. BREAKING STRENGTH % | | 3,2 | 3,8 | 3,9 | 4,3 | 4 | 4,4 | |

PULLEY

DESCRIPTION

| | |
|-----------|---|
| PULLEY | 20 m/m |
| CODE | RF25109 |
| MATERIALS | STAINLESS STEEL NYLON CARBON ACETAL |
| BEARING | DELRIN® |
| WEIGHT | 9 G/PIECE |

TECHNICAL SPECIFICATIONS



| | |
|---------------|-------|
| DIMENSIONS | m/m |
| A | 32 |
| B | 20 |
| C | 20 |
| Ø | 6 max |
| LOAD | KG |
| WORKING LIMIT | 250 |
| BREAKING | 550 |

THREAD

SAIL MAKING

| | |
|-------------------|--------------------------|
| NAME | SERAFIL |
| N° OF REFERENCE | 60 |
| MATERIAL | POLYESTER |
| TYPE OF FINISH | SILK |
| LINEAR DENSITY | NM 61 / 3 (DTEX 163 * 3) |
| BREAKING STRENGTH | 3,000 CN |
| ELONGATION | 17,00% |

PROPIETIES SERAFIL

| | |
|---------------------------|---------------------|
| SOLIDITY ARTIFICIAL LIGTH | ISO 105 B02 > 5 - 6 |
| SOLIDITY SWEAT | ISO 105 E04 > 4 |
| SOLIDITY WASHING | ISO 105 C04 > 3 |
| SOLIDITY GRAZE IN DRY | ISO 105 X12 > 4 |
| SOLIDITY WASHING IN DRY | ISO 105 D01 > 3 - 4 |
| TREATMENT WATER REPELLENT | WR |

RISERS MAKING

| | |
|-------------------|---------------------|
| NAME | COATS BONDED C.F.P. |
| N° OF REFERENCE | V138 |
| MATERIAL | POLYESTER |
| TYPE OF FINISH | SILK |
| BREAKING STRENGTH | 9,5 KG |
| ELONGATION | 19% |

RISERS

RISERS

| | |
|-------------------|----------------------|
| N° OF REFERENCE | CSAR7 |
| MATERIAL | POLYESTER & TECHNORA |
| WIDTH | 7 mm |
| THICKNESS | 2,10 mm |
| BREAKING STRENGTH | 600 DAN |
| ELONGATION | MAX. 8,1% |
| WEIGTH | 13,6 G/M |
| COLOR | BLACK |

N° OF REFERENCE

3455

| | |
|-------------------|----------------------|
| MATERIAL | POLYESTER & TECHNORA |
| WIDTH | 12 MM |
| THICKNESS | 2,25 mm |
| BREAKING STRENGTH | 1.100 daN |
| ELONGATION | MAX. 11% |
| WEIGTH | 21,1 G/M |
| COLOR | BLACK |

COLOR INDICATOR

| | |
|-------------------|-------------|
| N° OF REFERENCE | IC-G 1-2 |
| MATERIAL | POLYESTER |
| WIDTH | 70 M/M |
| THICKNESS | 0,80 M/M |
| BREAKING STRENGTH | 130 DN |
| ELONGATION | 35 % |
| WEIGTH | 32 G * L.M. |
| COLOR | GREEN |



Niviuk Paragliders

C/ Del Ter 6 - nave D
17165 La Cellera de Ter - Girona - Spain
+34 972 422 878 | info@niviuk.com

www.niviuk.com